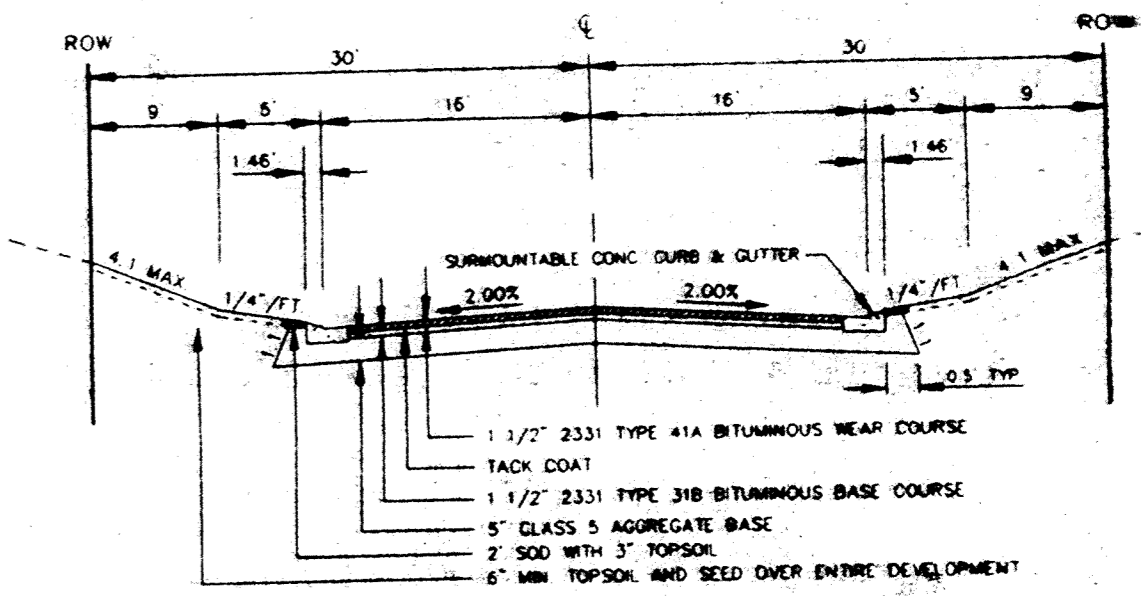
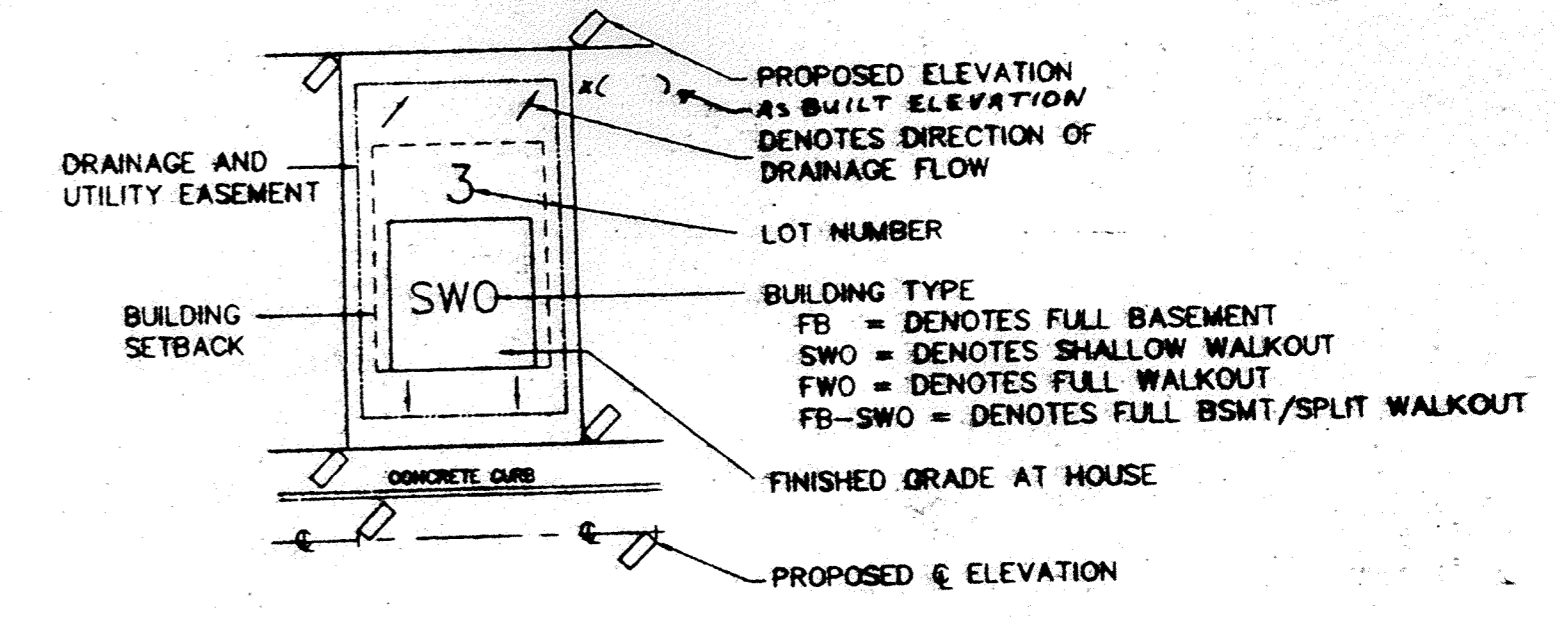


TYPICAL LOT

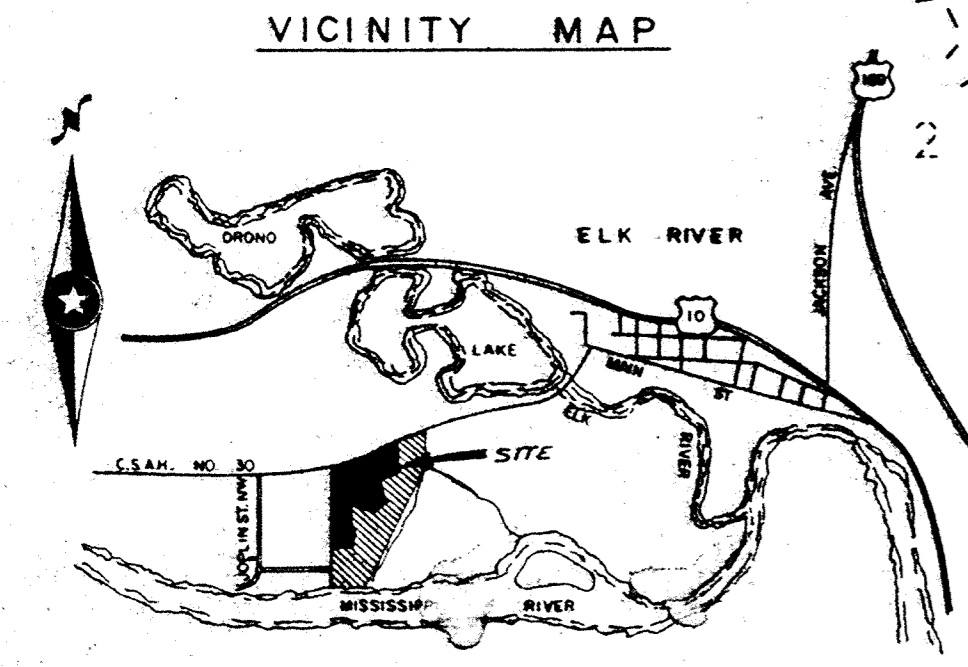
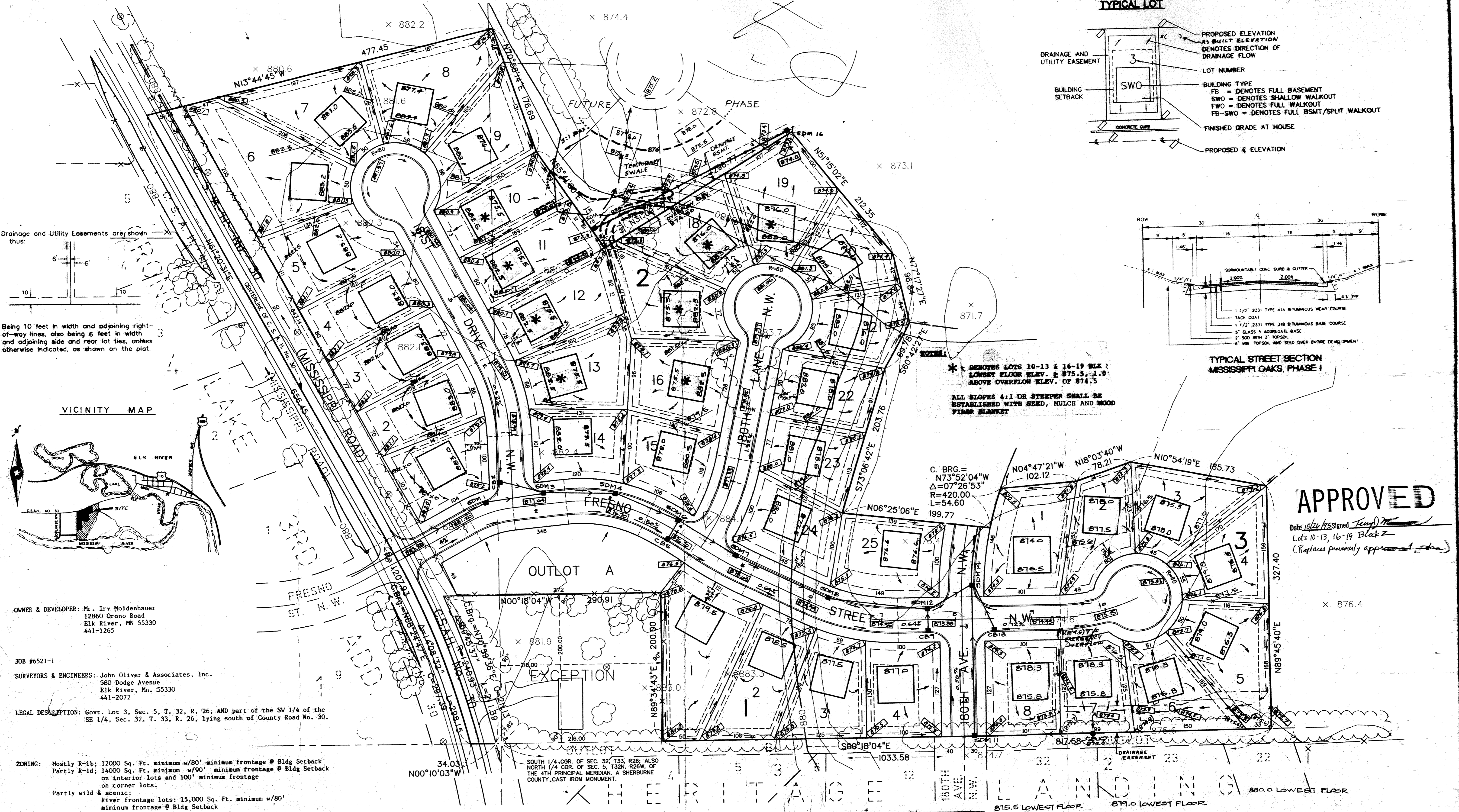


* DENOTES LOTS 10-13 & 16-19 BLK 1
 LOWEST FLOOR ELEV. ± 875.5, ± 0.0
 ABOVE OVERFLOW ELEV. OF 874.5

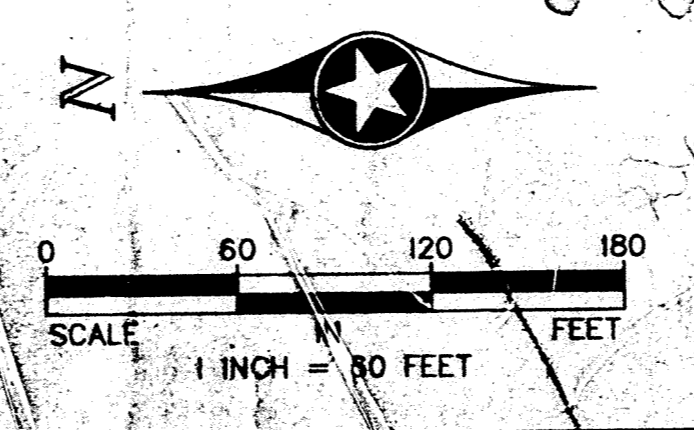
ALL SLOPES 4:1 OR STEEPER SHALL BE ESTABLISHED WITH SEED, MULCH AND WOOD FIBER BLANKET

APPROVED

Date 10/24/99 assigned *Lynn P. Caswell*
 Lots 10-13, 16-19 Blk 2
 (Replaces previously approved plan)



FROM GRADE SYSTEM	CATCHBASIN	GRADE	SPY. ELEV.
1		879.30	889.72
2		879.30	889.72
3		879.30	889.72
4		879.30	889.72
5		879.30	889.72
6		879.30	889.72
7		879.30	889.72
8		879.30	889.72
9		879.30	889.72
10		879.30	889.72
11		879.30	889.72
12		879.30	889.72
13		879.30	889.72
14		879.30	889.72
15		879.30	889.72
16		879.30	889.72
17		879.30	889.72
18		879.30	889.72
19		879.30	889.72
20		879.30	889.72
21		879.30	889.72
22		879.30	889.72
23		879.30	889.72
24		879.30	889.72
25		879.30	889.72



REVISED 9-28-95

ORIGINAL DATE 5/20/94
 DESIGN BY: J.M.
 DRAWN BY: J.H.
 CHECKED BY: L.R.

REVISIONS:
 CHANGES 02/20/94
 PAR. REV. 3/22/94
 FUTURE PHASE 10/24/99

I hereby certify that this plan was prepared by me or under my direct supervision and that I am a duly Registered Land Surveyor under the laws of the State of Minnesota.

SIGNED: *Lynn P. Caswell*
 DATE: 5/24/99 REG. NO. 13057

John Oliver & Associates, Inc.
 680 Dodge Avenue
 Elk River, Minnesota
 (612)441-2072 (FAX)441-5885
 Civil Engineering, Land Surveying, Land Planning

MISSISSIPPI OAKS
 FOR
 IRV MOLDENHAUER
 DEVELOPMENT PLAN

SAP No. SHEET 1 OF 1 FILE NO. 6521