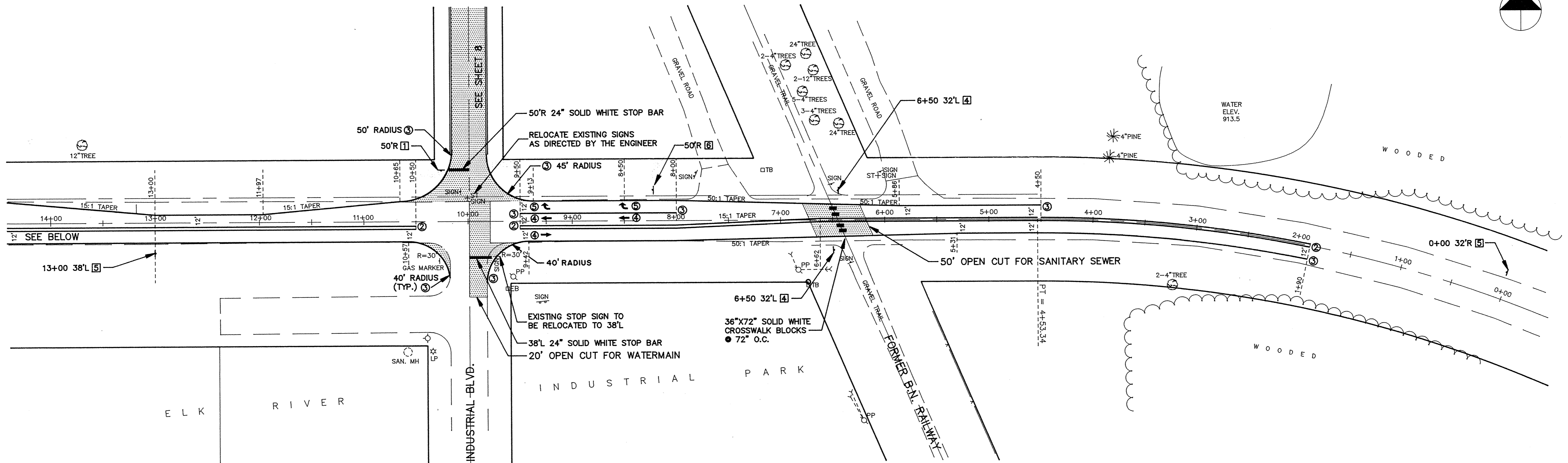
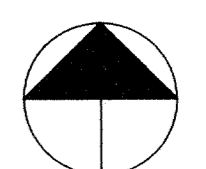
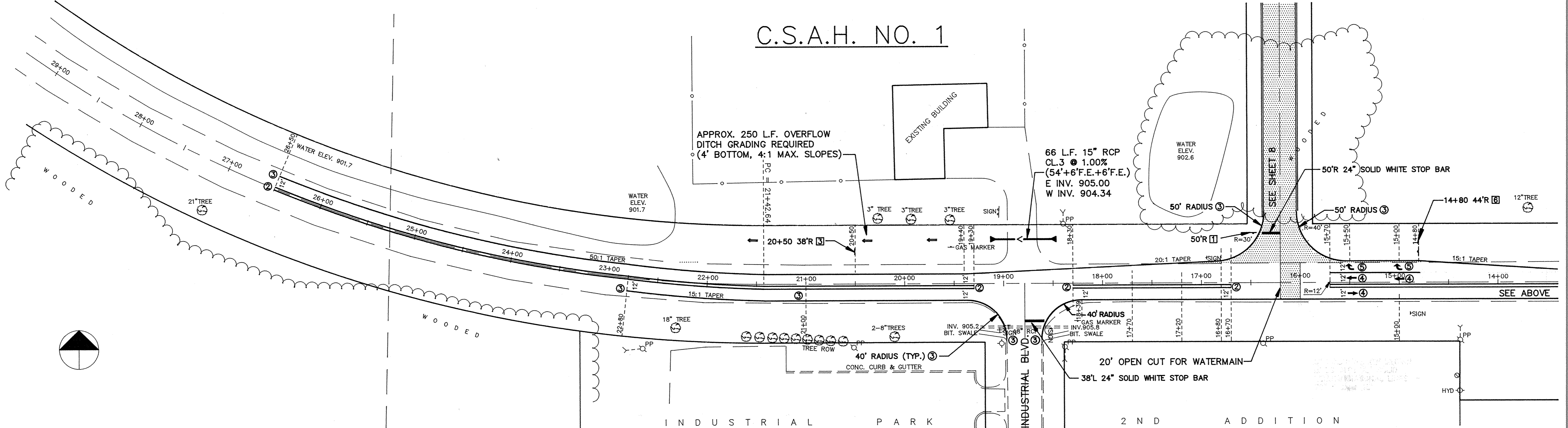


C.S.A.H. NO. 1



C.S.A.H. NO. 1



I HEREBY CERTIFY THAT THIS PLAN, SPECIFICATION, OR REPORT WAS PREPARED BY ME OR UNDER MY DIRECT SUPERVISION AND THAT I AM A DULY REGISTERED PROFESSIONAL ENGINEER UNDER THE LAWS OF THE STATE OF MINNESOTA.

DATE _____ REG. NO. _____

Maier Stewart & Associates Inc.
 CONSULTING ENGINEERS
 9800 SHELARD PARKWAY (612) 546-0432 MINNEAPOLIS, MINNESOTA 55441
 1959 SLOAN PLACE (612) 774-6021 ST. PAUL, MINNESOTA 55117

DATE	DESCRIPTION	DESIGNED	CHECKED

REVISIONS

DATE	MAY, 1992	SHEET	9	OF	14	SHEETS	PROJECT NO.	230-125
------	-----------	-------	---	----	----	--------	-------------	---------

CITY OF ELK RIVER
 SIGNING AND STRIPING
 C.S.A.H. NO. 1