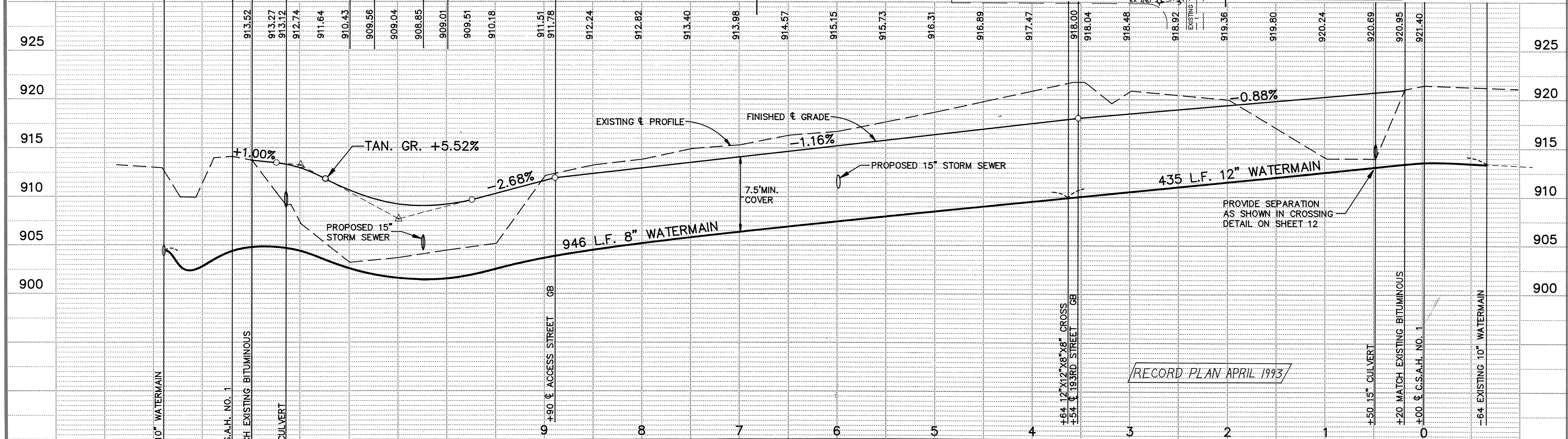
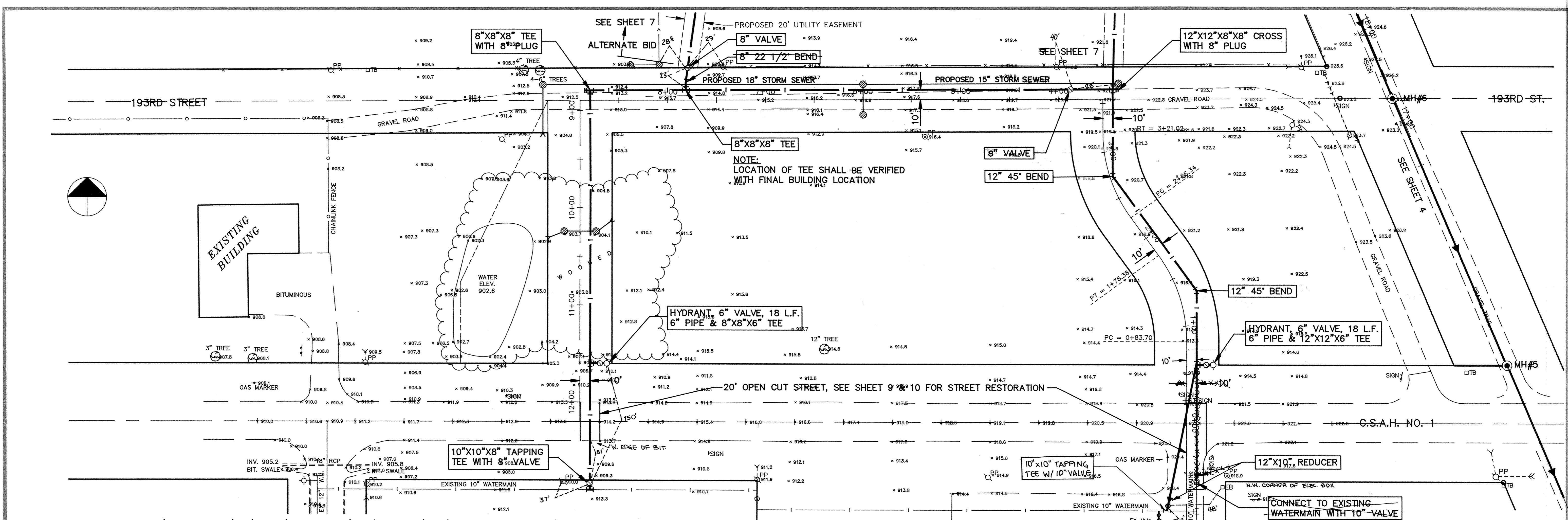


SARCO PRODUCTS • NEW HOPE, MINNESOTA  
REORDER BY PART NUMBER 8952  
SARCO PRODUCTS • NEW HOPE, MINNESOTA  
REORDER BY PART NUMBER 8952  
SARCO PRODUCTS • NEW HOPE, MINNESOTA  
REORDER BY PART NUMBER 8952  
SARCO PRODUCTS • NEW HOPE, MINNESOTA  
REORDER BY PART NUMBER 8952



I HEREBY CERTIFY THAT THIS PLAN, SPECIFICATION, OR REPORT WAS PREPARED BY ME OR UNDER MY DIRECT SUPERVISION AND THAT I AM A DULY REGISTERED PROFESSIONAL ENGINEER UNDER THE LAWS OF THE STATE OF MINNESOTA.

*Virgil S. Hopkins*

DATE 9/12/91 REG. NO. 19941

**MS&A** CONSULTING ENGINEERS  
**Maier Stewart & Associates Inc.**  
 1959 SLOAN PLACE (612)774-6021 ST. PAUL, MINNESOTA 55117

DATE	DESCRIPTION	DESIGNED	GG
		CHECKED	TJM
		DRAWN	GG
		GRAPHIC SCALE	
		0' HORIZ.	50'
		0' VERT.	5'

**CITY OF ELK RIVER**  
**WATERMAIN CONSTRUCTION**  
**ELEMENTARY SCHOOL ACCESS**

DATE AUG. 1991 SHEET 6 OF 14 SHEETS PROJECT NO. 230-125