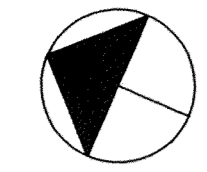
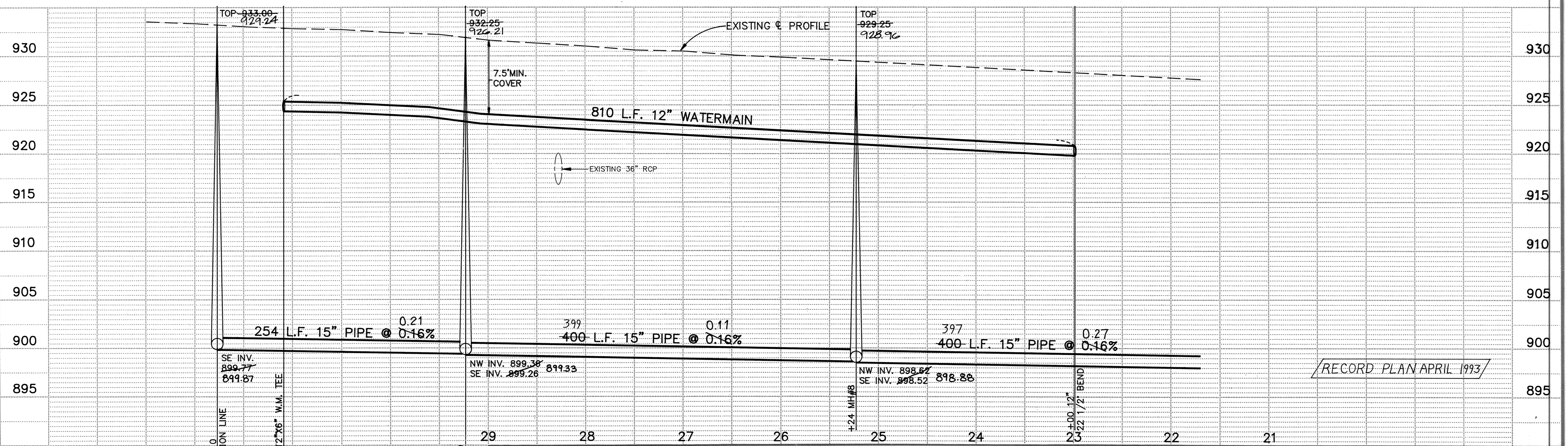
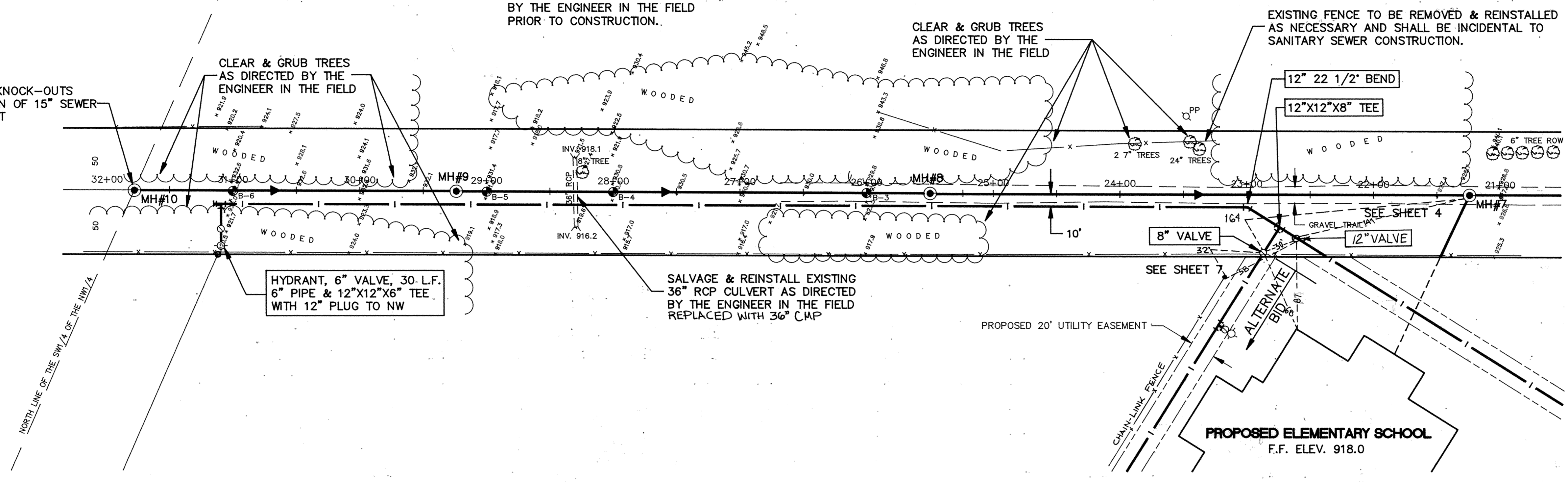


FORMER BURLINGTON NORTHERN RAILWAY



NOTE:
INSTALL SILT FENCE AS DIRECTED BY THE ENGINEER IN THE FIELD PRIOR TO CONSTRUCTION.

PROVIDE BRICKED-IN KNOCK-OUTS FOR FUTURE EXTENSION OF 15" SEWER TO NORTHWEST & WEST



RECORD PLAN APRIL 1993

I HEREBY CERTIFY THAT THIS PLAN, SPECIFICATION, OR REPORT WAS PREPARED BY ME OR UNDER MY DIRECT SUPERVISION AND THAT I AM A DULY REGISTERED PROFESSIONAL ENGINEER UNDER THE LAWS OF THE STATE OF MINNESOTA.

Viggo S. Mathias

DATE 9/12/91 REG. NO. 19941

Maier Stewart & Associates Inc.
CONSULTING ENGINEERS

1959 SLOAN PLACE (612)774-6021 ST. PAUL, MINNESOTA 55117

DATE	DESCRIPTION	DESIGNED	CHECKED	DRAWN
		GG	TJM	GG
REVISIONS		GRAPHIC SCALE 0 HORIZ. 50 0 VERT. 5		

CITY OF ELK RIVER
SANITARY SEWER & WATERMAIN CONSTRUCTION
ELEMENTARY SCHOOL UTILITIES

DATE AUG. 1991 SHEET 5 OF 14 SHEETS PROJECT NO. 230-125