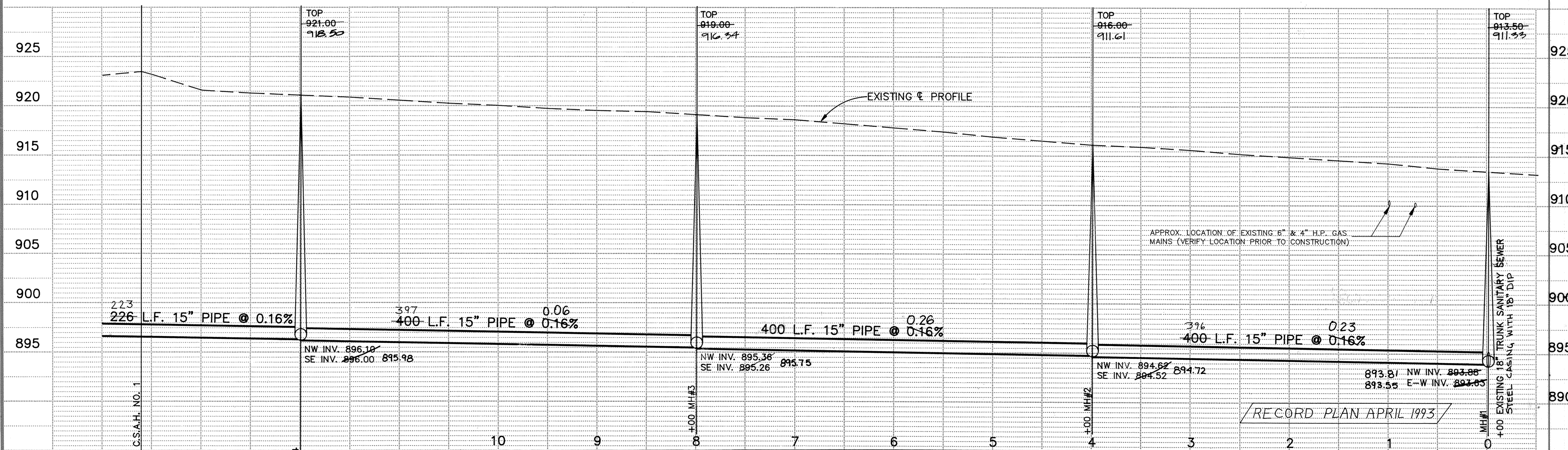
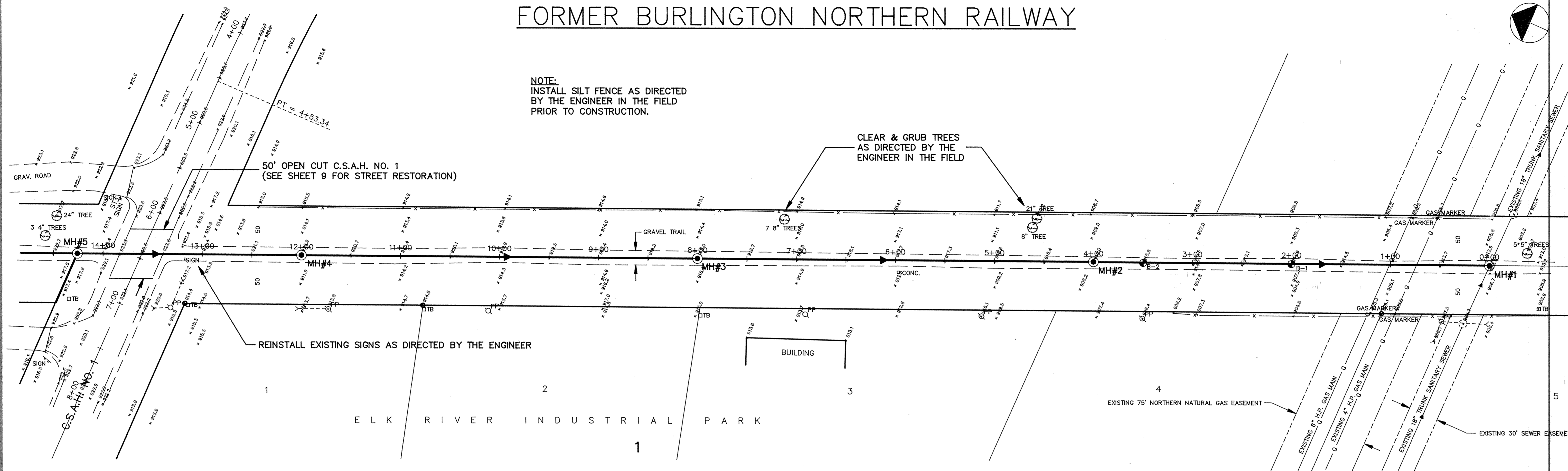


FORMER BURLINGTON NORTHERN RAILWAY

NOTE:
INSTALL SILT FENCE AS DIRECTED
BY THE ENGINEER IN THE FIELD
PRIOR TO CONSTRUCTION.



I HEREBY CERTIFY THAT THIS PLAN, SPECIFICATION, OR REPORT WAS PREPARED BY ME OR UNDER MY DIRECT SUPERVISION AND THAT I AM A DULY REGISTERED PROFESSIONAL ENGINEER UNDER THE LAWS OF THE STATE OF MINNESOTA.
Viggo S. Harbo
DATE 9/12/91 REG. NO. 19941

MS&A CONSULTING ENGINEERS
Maier Stewart & Associates Inc.
1959 SLOAN PLACE (612)774-6021 ST. PAUL, MINNESOTA 55117

DATE	DESCRIPTION	DESIGNED <u>GG</u>
		CHECKED <u>TJM</u>
		DRAWN <u>GG</u>
		GRAPHIC SCALE
		0 HORIZ. 50
		0 VERT. 5

CITY OF ELK RIVER
SANITARY SEWER CONSTRUCTION
ELEMENTARY SCHOOL UTILITIES
DATE AUG. 1991 SHEET 3 OF 14 SHEETS PROJECT NO. 230-125