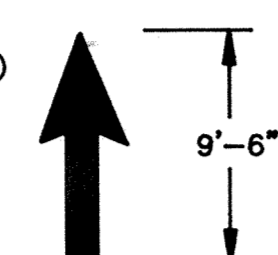
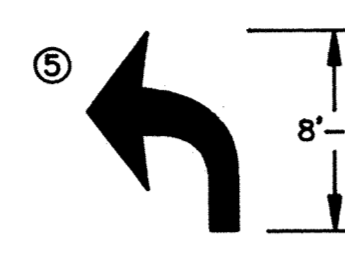
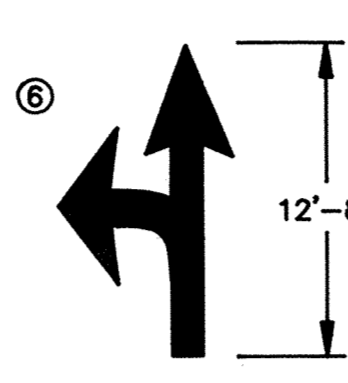
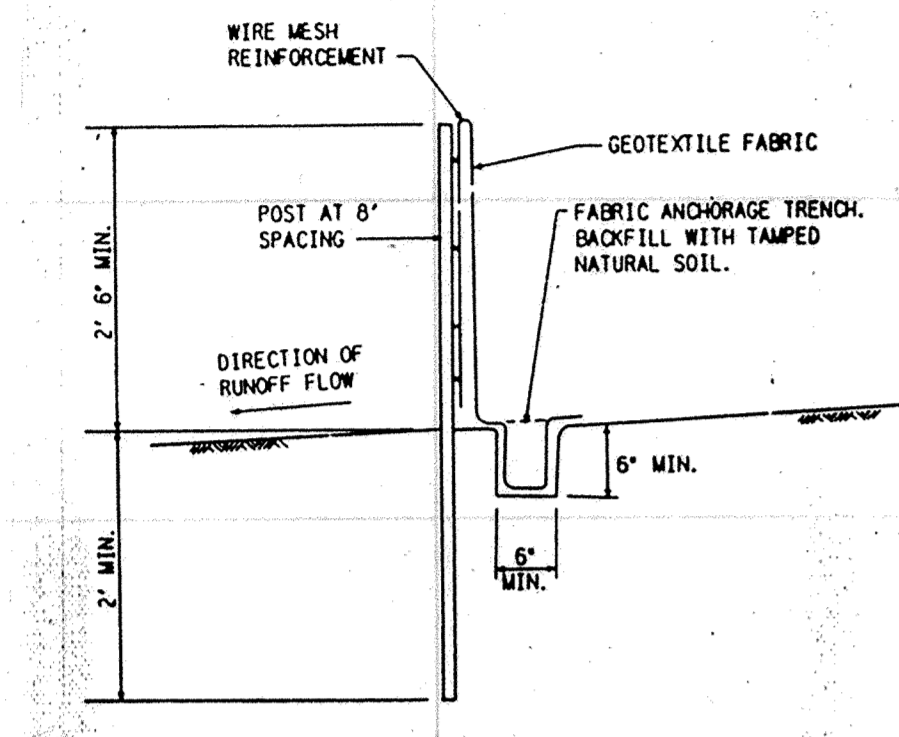
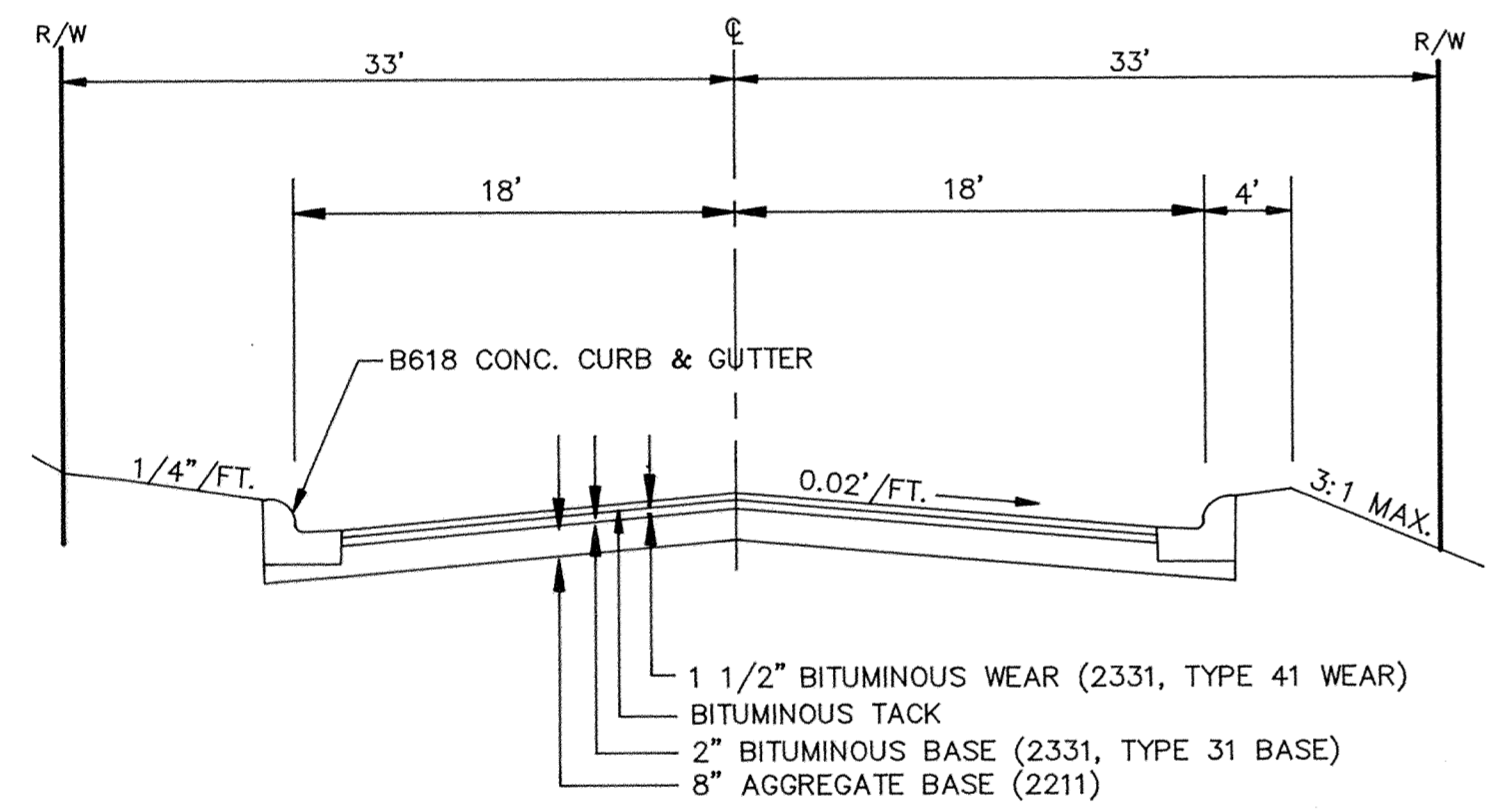


SIGN SCHEDULE				
KEY	PLATE CODE	DESCRIPTION/MESSAGE	SIZE	QUANTITY
1	R1-1	STOP	30"X30"	2
2	S1-1	SCHOOL ADVANCE	36" PENTAGON	2
3	W4-2R	PAVEMENT WIDTH TRANSITION	36"X36"	2
4	W11-2A	PEDESTRIAN XING	30"X30"	2
5	W11-2	PEDESTRIAN XING ADVANCE	30"X30"	2
6	R3-7R	MANDATORY TURN	30"X30"	2

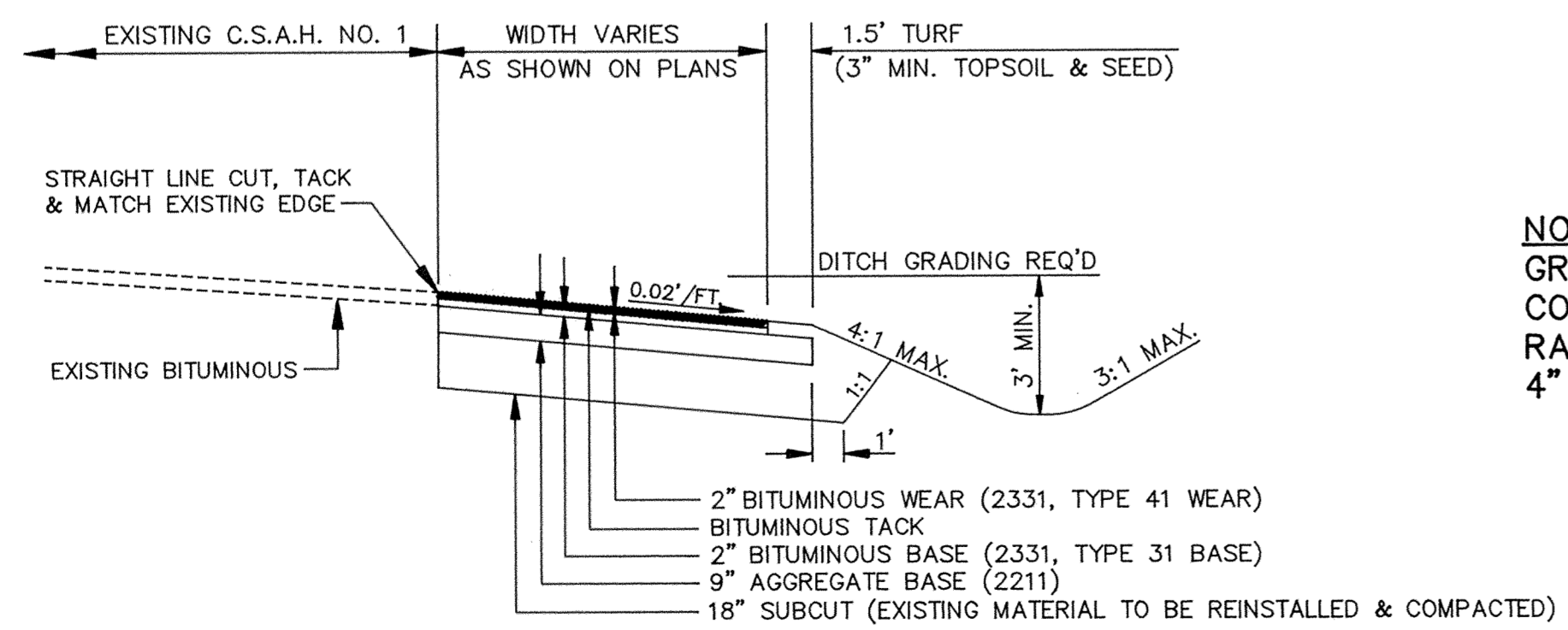
STRIPING SCHEDULE	
KEY	DESCRIPTION
1	4" SKIP WHITE LANE LINE (10' STRIPE, 40' GAP)
2	DOUBLE 4" YELLOW LANE LINE
3	4" SOLID WHITE LANE LINE
4	 9'-6"
5	 8'-0" (LEFT OR RIGHT)
6	 12'-8" (LEFT OR RIGHT)



SILT FENCE DETAIL

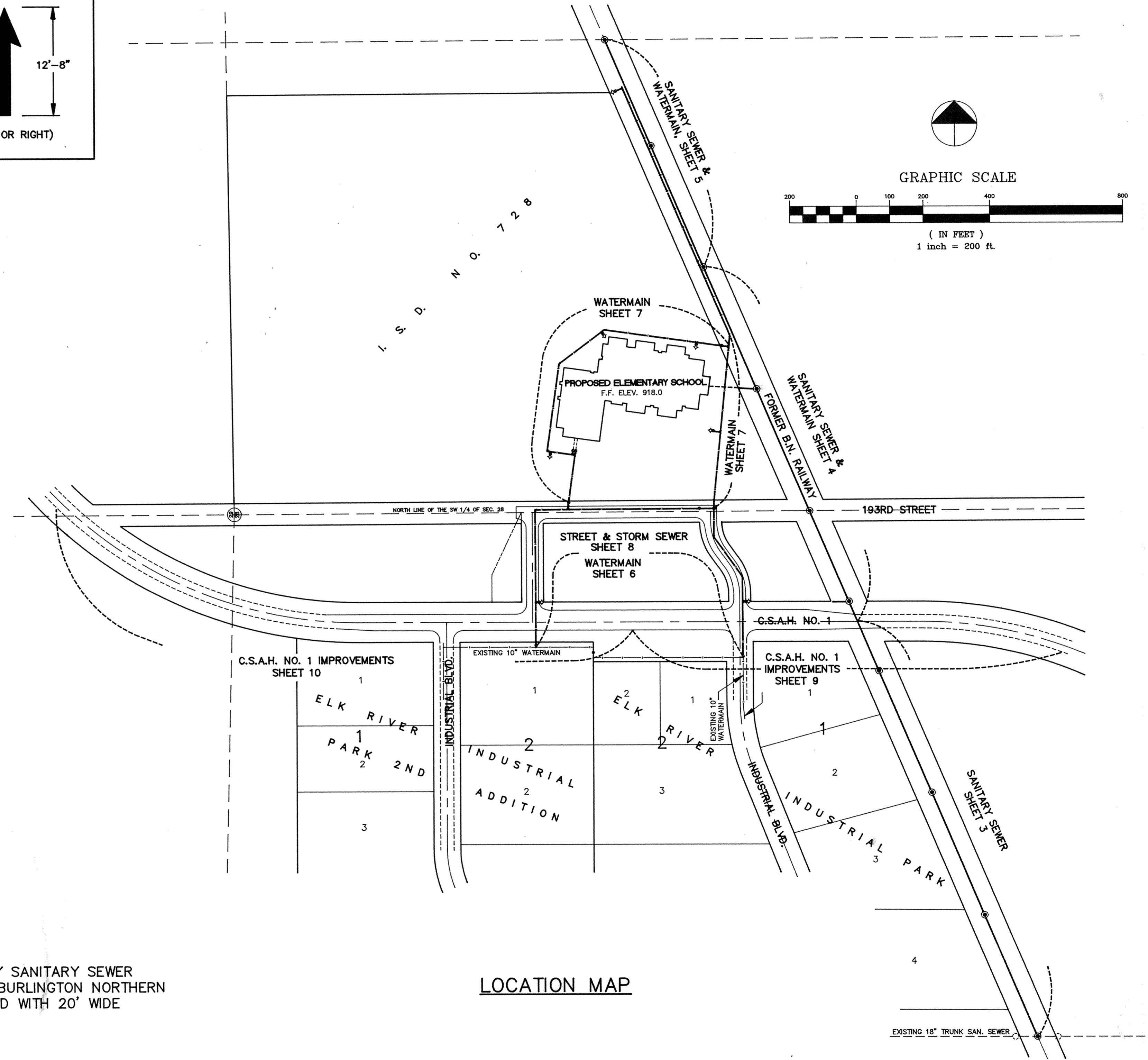


TYPICAL STREET SECTION
ELEMNTARY SCHOOL ACCESSS STREET



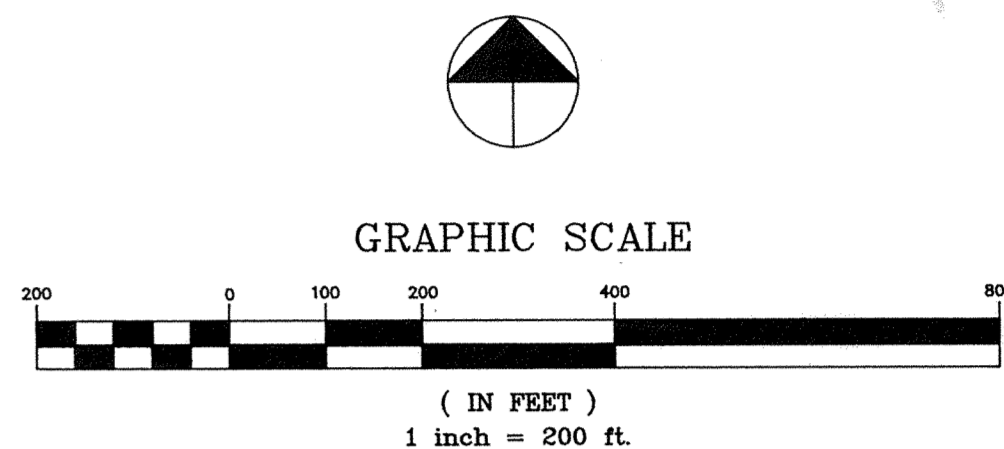
TYPICAL STREET SECTION
C.S.A.H. NO. 1 WIDTH EXTENSION

NOTE:
GRAVEL TRAIL DISTURBED BY SANITARY SEWER CONSTRUCTION ON FORMER BURLINGTON NORTHERN RAILWAY SHALL BE RESTORED WITH 20' WIDE 4" CLASS 5 AGGREGATE.



LOCATION MAP

RECORD PLAN APRIL 1993



I HEREBY CERTIFY THAT THIS PLAN, SPECIFICATION, OR REPORT WAS PREPARED BY ME OR UNDER MY DIRECT SUPERVISION AND THAT I AM A DULY REGISTERED PROFESSIONAL ENGINEER UNDER THE LAWS OF THE STATE OF MINNESOTA.
David S. Hawkins
DATE 9/12/91 REG. NO. 19941

MS&A CONSULTING ENGINEERS
Maier Stewart & Associates Inc.
9800 SHELARD PARKWAY (612) 546-0432 MINNEAPOLIS, MINNESOTA 55441
1959 SLOAN PLACE (612) 774-6021 ST. PAUL, MINNESOTA 55117

DATE	DESCRIPTION	DESIGNED_GG
		CHECKED TJM
		DRAWN_GG
		GRAPHIC SCALE 0 HORIZ. 200 0 VERT.

CITY OF ELK RIVER ELEMENTARY SCHOOL STREET & UTILITIES LOCATION MAP & DETAILS			
DATE	SEPT. 1991	SHEET 2 OF 14 SHEETS	PROJECT NO. 230-125