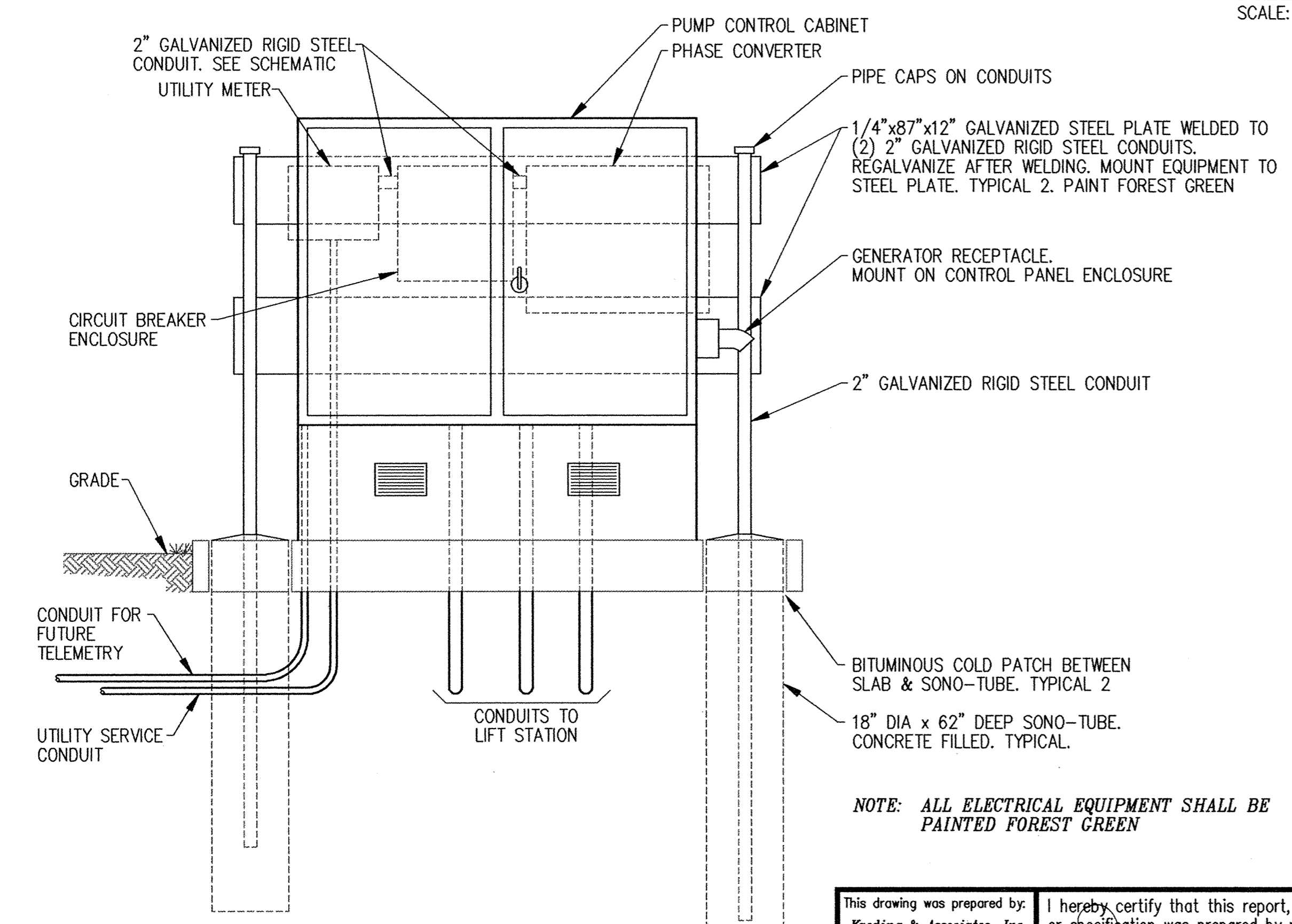


VIEW A-A

NOTE: ALL ELECTRICAL EQUIPMENT SHALL BE PAINTED FOREST GREEN

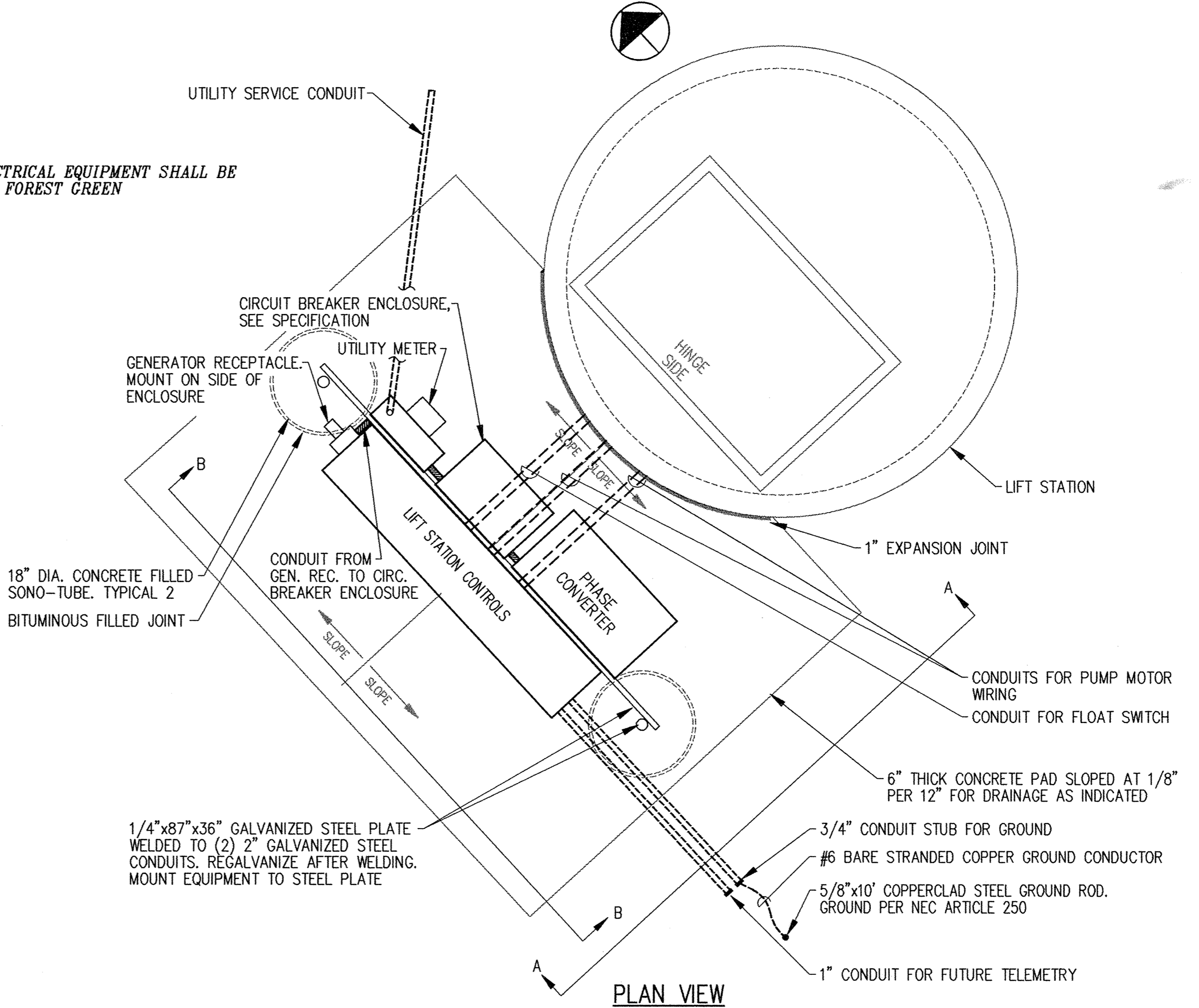


VIEW B-B

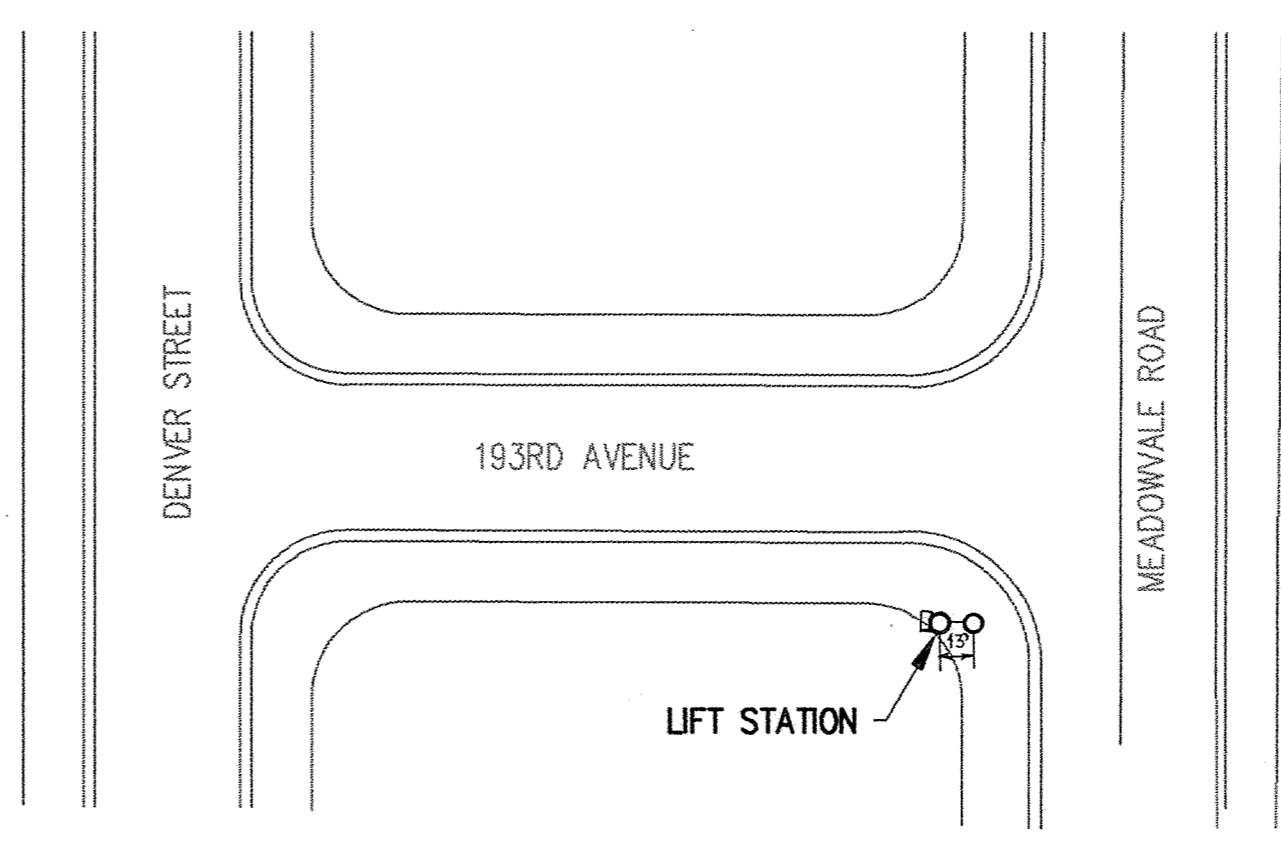
NOTE: ALL ELECTRICAL EQUIPMENT SHALL BE PAINTED FOREST GREEN

LIFT STATION DETAILS

SCALE: 3/4"=1'-0"

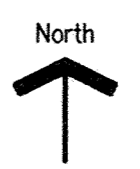


PLAN VIEW



SITE LOCATION DETAIL

NO SCALE



This drawing was prepared by:  
Kauding & Associates, Inc.  
7300 France Avenue South  
Suite 330  
Minneapolis, MN 55435  
Telephone: (612) 831-0317  
Fax: (612) 831-2179

I hereby certify that this report, plan, or specification was prepared by me or under my direct supervision and I am a duly registered Professional Engineer under the laws of the State of Minnesota.  
*[Signature]*  
Date: 17 AUG 93 Registration No.: 9955

**Maier Stewart & Associates Inc.**  
CONSULTING ENGINEERS  
1959 SLOAN PLACE [612] 774-6021 ST. PAUL, MINNESOTA 55117

DATE	DESCRIPTION	DESIGNED PFK	CHECKED PFK	DRAWN TLH

GRAPHIC SCALE  
0 HORIZ. ]  
0 VERT. ]

**CITY OF ELK RIVER**  
MEADOWVALE HEIGHTS  
LIFT STATION SITE PLAN & DETAILS  
193RD AVENUE

RECORD PLAN  
JUNE 1994

DATE AUG 1993 SHEET 8 OF 12 SHEETS PROJECT NO. 230-16B