

CONTACT PERSONS:
 NORTHERN NATURAL GAS: CLARK DAHLIN (612) 333-7893
 BURLINGTON NORTHERN RAILROAD: RON RADIKKA (612) 259-3235

MEADOWVALE ROAD

OPEN CUT MEADOWVALE ROAD,
 STRAIGHT LINE CUT, TACK AND
 MATCH EXISTING BITUMINOUS.
 SEE SPECIFICATIONS FOR
 FURTHER DETAILS.

HYDRANT, 6" VALVE,
 4 L.F. 6" DIP
 AND 10" x 6" TEE
 54+36

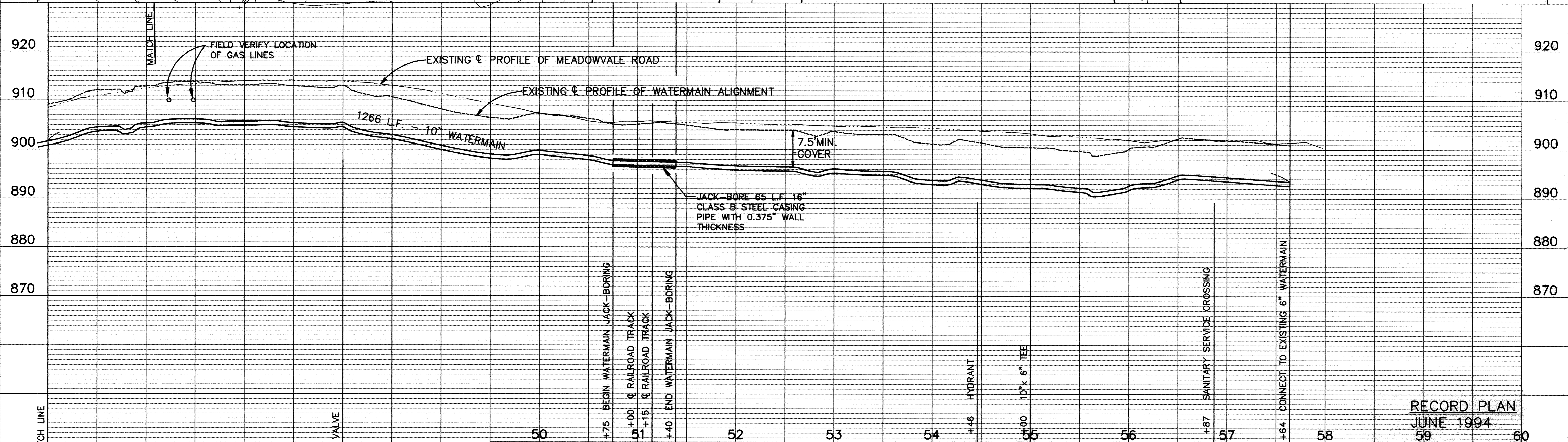
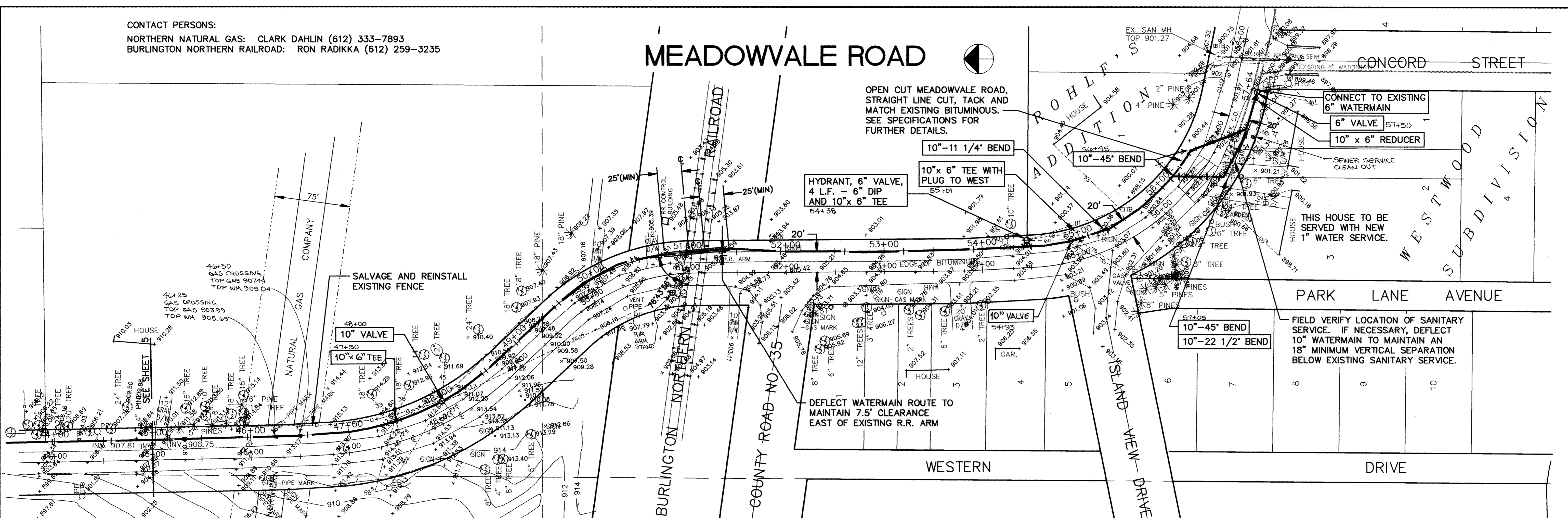
10"-11 1/4" BEND
 10" x 6" TEE WITH
 PLUG TO WEST
 55+01

CONNECT TO EXISTING
 6" WATERMAIN
 6" VALVE 57+50
 10" x 6" REDUCER

THIS HOUSE TO BE
 SERVED WITH NEW
 1" WATER SERVICE.

FIELD VERIFY LOCATION OF SANITARY
 SERVICE. IF NECESSARY, DEFLECT
 10" WATERMAIN TO MAINTAIN AN
 18" MINIMUM VERTICAL SEPARATION
 BELOW EXISTING SANITARY SERVICE.

DEFLECT WATERMAIN ROUTE TO
 MAINTAIN 7.5" CLEARANCE
 EAST OF EXISTING R.R. ARM



I HEREBY CERTIFY THAT THIS PLAN, SPECIFICATION,
 OR REPORT WAS PREPARED BY ME OR UNDER MY DIRECT
 SUPERVISION AND THAT I AM A DULY REGISTERED
 PROFESSIONAL ENGINEER UNDER THE LAWS OF THE
 STATE OF MINNESOTA.
Mark V. Graham
 DATE 8/13/93 REG. NO. 19130

MS&A CONSULTING ENGINEERS
 Maier Stewart & Associates Inc.
 1959 SLOAN PLACE (612) 774-6021 ST. PAUL, MINNESOTA 55117
 9800 SHELARD PARKWAY (612) 546-0432 MINNEAPOLIS, MINNESOTA 55441

DATE	DESCRIPTION	DESIGNED	CHECKED

GRAPHIC SCALE
 0' 1" = 50'
 0' 1" = 5'

CITY OF ELK RIVER
 WATERMAIN
 MEADOWVALE ROAD
 DATE AUGUST 1993 SHEET 6 OF 12 SHEETS PROJECT NO. 230-171

DRAWING NUMBER

DRAWING NUMBER

DRAWING NUMBER

DRAWING NUMBER
 MEADOT.93