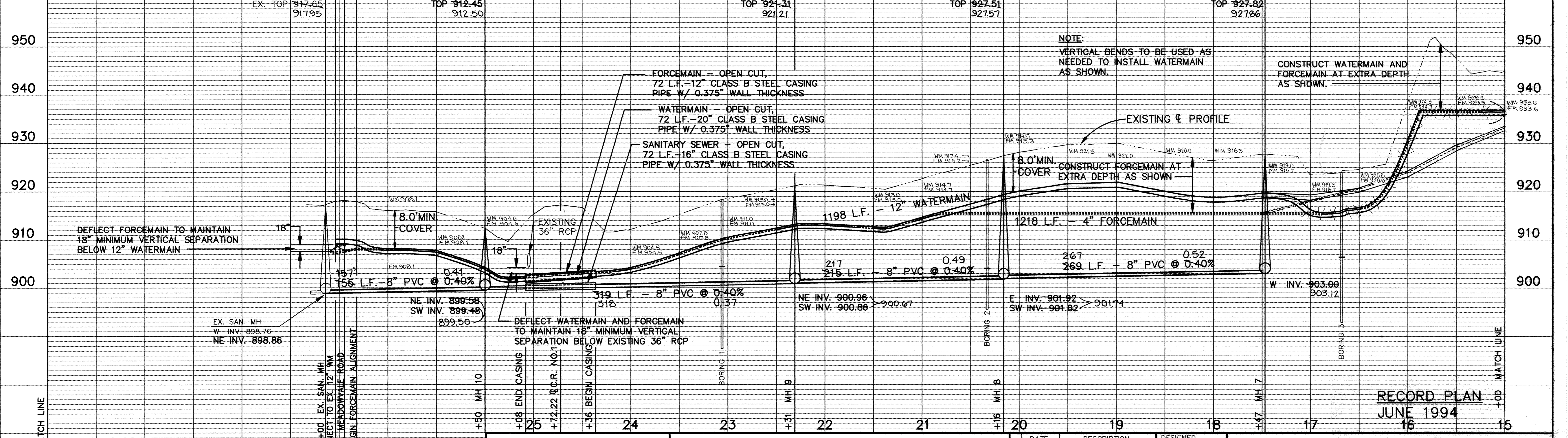
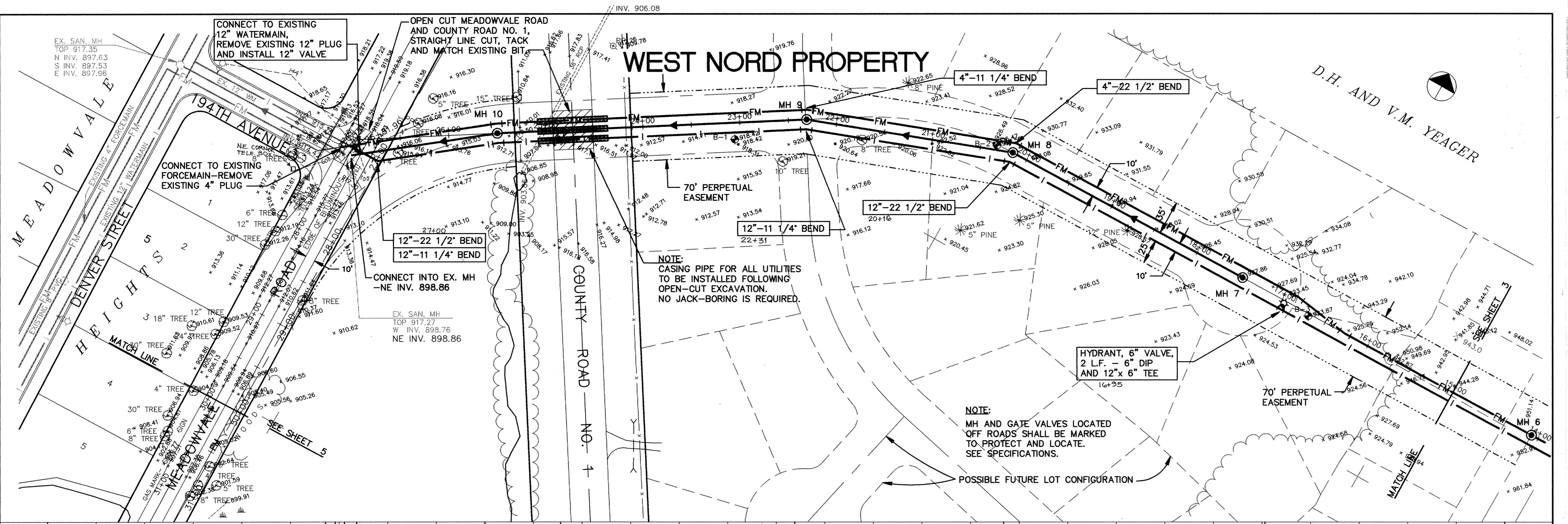


WEST NORD PROPERTY



I HEREBY CERTIFY THAT THIS PLAN, SPECIFICATION, OR REPORT WAS PREPARED BY ME OR UNDER MY DIRECT SUPERVISION AND THAT I AM A DULY REGISTERED PROFESSIONAL ENGINEER UNDER THE LAWS OF THE STATE OF MINNESOTA.

Mark J. Graham
DATE 8/13/93 REG. NO. 19130

MS&A CONSULTING ENGINEERS
Maier Stewart & Associates Inc.

1959 SLOAN PLACE (612) 774-6021 ST. PAUL, MINNESOTA 55117
9800 SHELARD PARKWAY (612) 546-0432 MINNEAPOLIS, MINNESOTA 55441

| DATE | DESCRIPTION | DESIGNED | CHECKED | DRAWN |
|------|-------------|----------|---------|-------|
| | | | | |

GRAPHIC SCALE
0 HORIZ. 50
0 VERT. 10

CITY OF ELK RIVER
SANITARY SEWER AND WATERMAIN
WEST NORD PROPERTY

DATE AUGUST 1993 SHEET 4 OF 12 SHEETS PROJECT NO. 230-171

SAFCO PRODUCTS • NEW HOPE, MINNESOTA
 REBORER BY PART NUMBER 8502
 SAFCO PRODUCTS • NEW HOPE, MINNESOTA
 REBORER BY PART NUMBER 8502
 SAFCO PRODUCTS • NEW HOPE, MINNESOTA
 REBORER BY PART NUMBER 8502
 SAFCO PRODUCTS • NEW HOPE, MINNESOTA
 REBORER BY PART NUMBER 8502