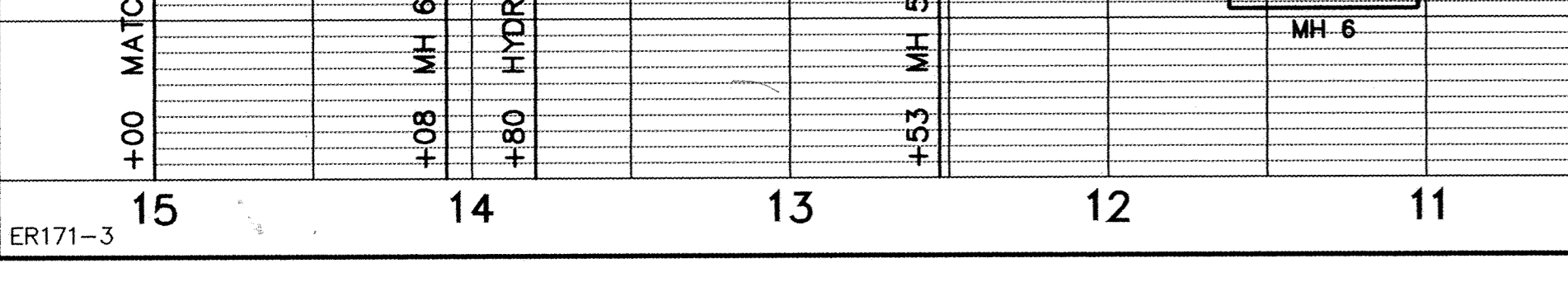
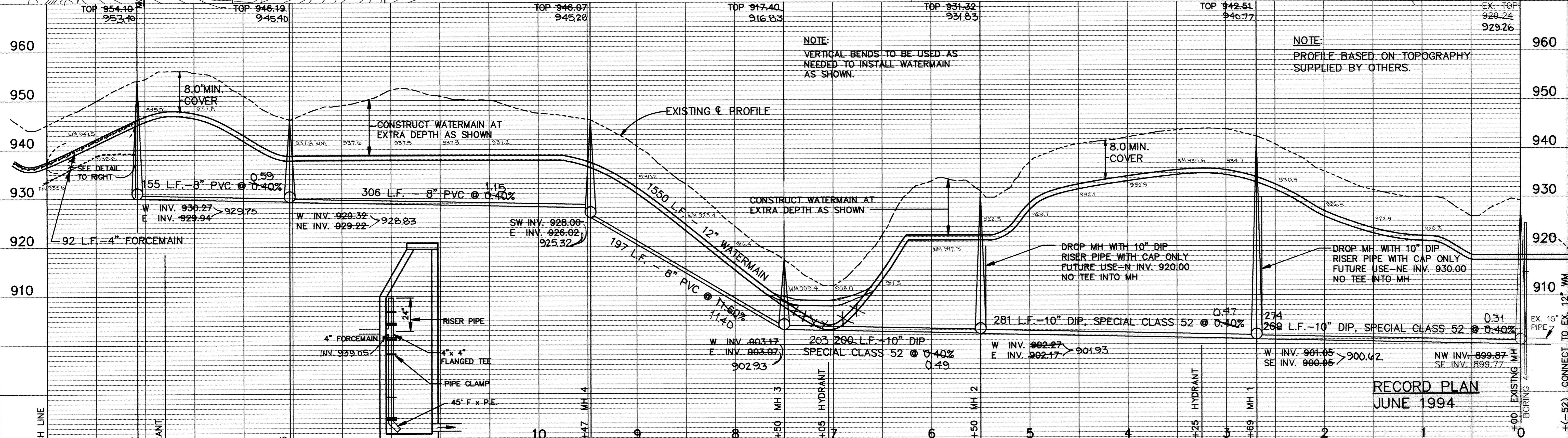
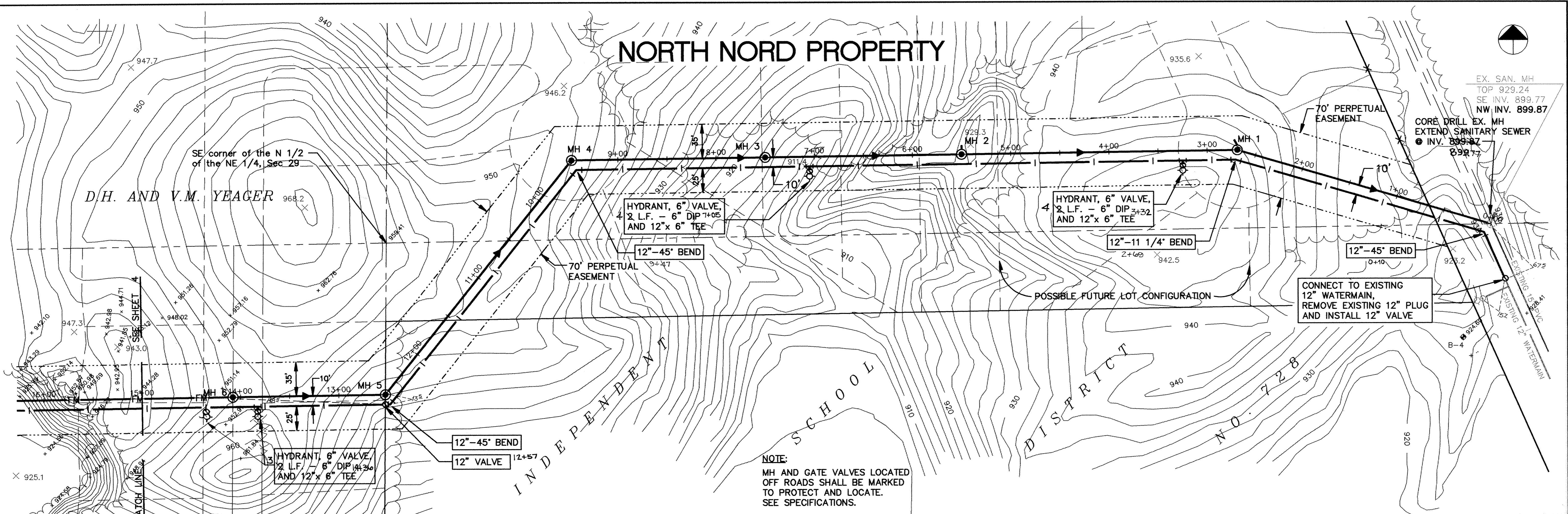


NORTH NORD PROPERTY



I HEREBY CERTIFY THAT THIS PLAN, SPECIFICATION, OR REPORT WAS PREPARED BY ME OR UNDER MY DIRECT SUPERVISION AND THAT I AM A DULY REGISTERED PROFESSIONAL ENGINEER UNDER THE LAWS OF THE STATE OF MINNESOTA.

Maier Stewart & Associates Inc.
 DATE 8/13/93 REG. NO. 19130

Maier Stewart & Associates Inc.
 CONSULTING ENGINEERS
 1959 SLOAN PLACE (612) 774-6021 ST. PAUL, MINNESOTA 55117
 9800 SHELARD PARKWAY (612) 546-0432 MINNEAPOLIS, MINNESOTA 55441

DATE	DESCRIPTION	DESIGNED
		CHEKED
		DRAWN
		CLS
GRAPHIC SCALE		
0 HORIZ. 50		
0 VERT. 10		

RECORD PLAN
JUNE 1994

CITY OF ELK RIVER
 SANITARY SEWER AND WATERMAIN
 NORTH NORD PROPERTY

DATE AUGUST 1993 SHEET 3 OF 12 SHEETS PROJECT NO. 230-171

SD&C PRODUCTS • NEW HOPE, MINNESOTA
 REPORTS BY PART NUMBER 8952
 SD&C PRODUCTS • NEW HOPE, MINNESOTA
 REPORTS BY PART NUMBER 8952
 SD&C PRODUCTS • NEW HOPE, MINNESOTA
 REPORTS BY PART NUMBER 8952
 SD&C PRODUCTS • NEW HOPE, MINNESOTA
 REPORTS BY PART NUMBER 8952