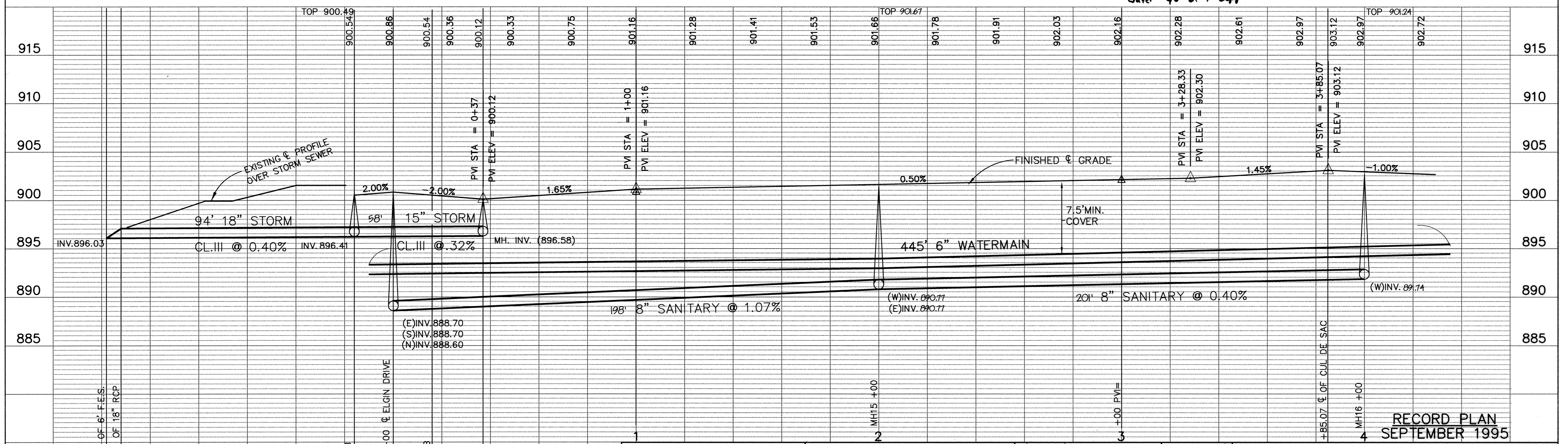
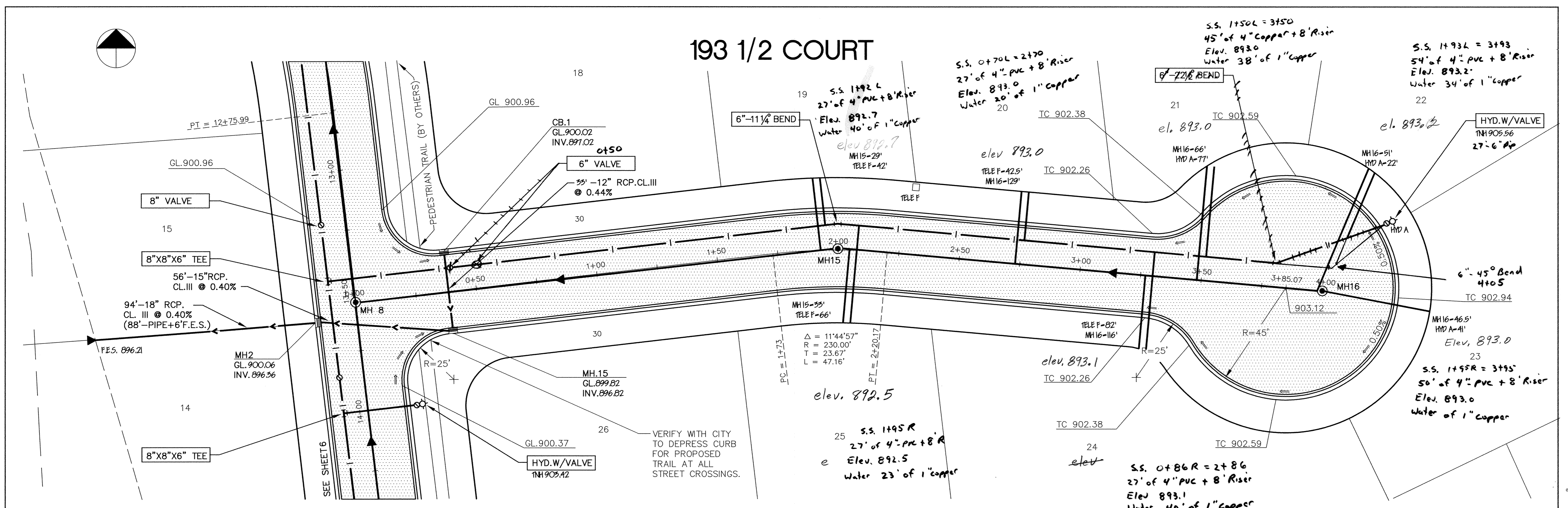


193 1/2 COURT



RECORD PLAN
SEPTEMBER 1995

I HEREBY CERTIFY THAT THIS PLAN, SPECIFICATION, OR REPORT WAS PREPARED BY ME OR UNDER MY DIRECT SUPERVISION AND THAT I AM A DULY REGISTERED PROFESSIONAL ENGINEER UNDER THE LAWS OF THE STATE OF MINNESOTA.

Mark V. Graham
DATE 2/12/95 REG. NO. 19130



1326 ENERGY PARK DRIVE
ST. PAUL, MINNESOTA 55108
(612) 644-4389

9800 SHELARD PARKWAY
MINNEAPOLIS, MINNESOTA 55441
(612) 546-0432

DATE	DESCRIPTION	DESIGNED	CHECKED	DRAWN
2/95	GRADE REVISIONS IN CUL-DE-SAC	MVG	RB	TC

CITY OF ELK RIVER SANITARY SEWER, WATERMAIN, STORM SEWER AND STREET 193 1/2 COURT	
DATE FEB, 1994	SHEET 9 OF 13 SHEETS
PROJECT NO. 230-208	