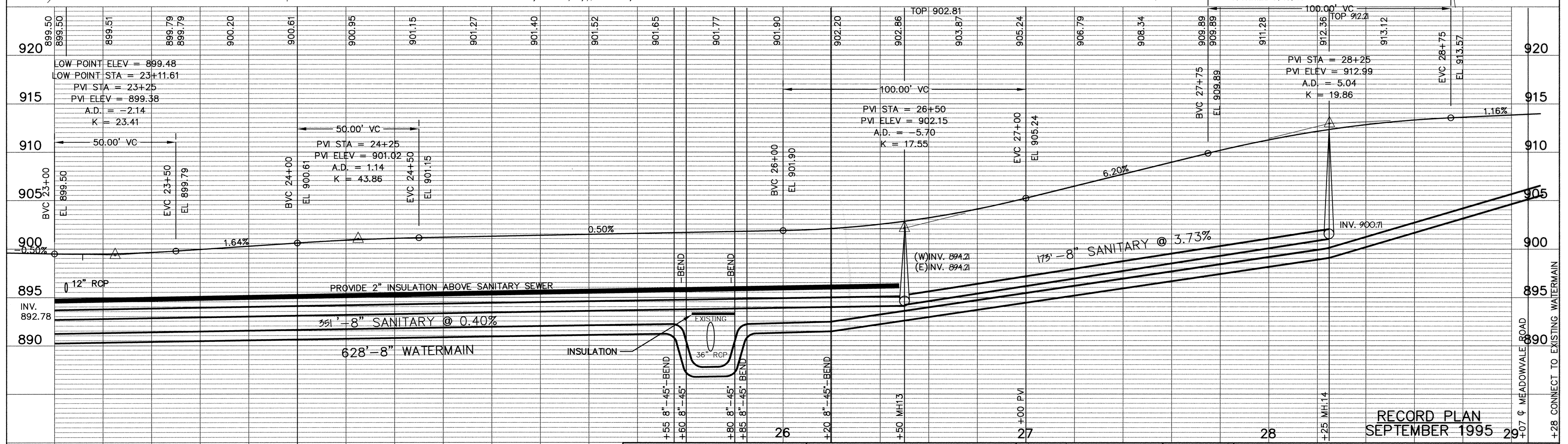
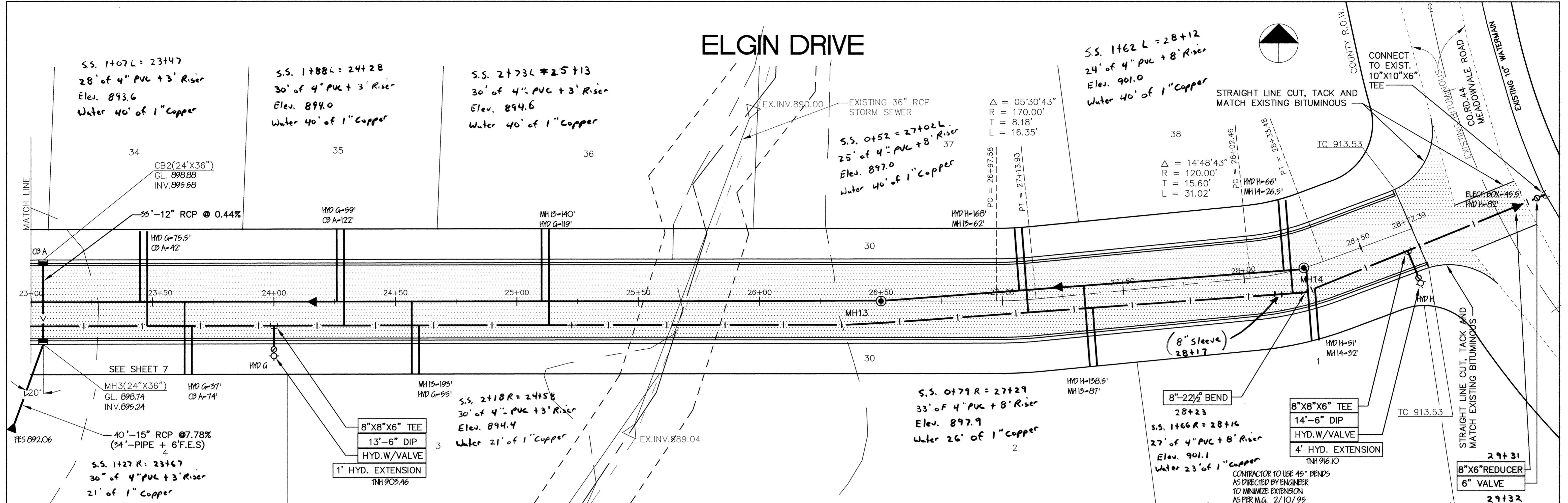
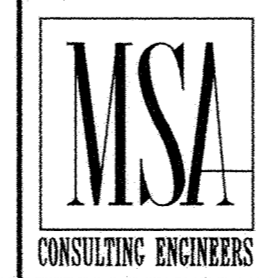


ELGIN DRIVE



I HEREBY CERTIFY THAT THIS PLAN, SPECIFICATION, OR REPORT WAS PREPARED BY ME OR UNDER MY DIRECT SUPERVISION AND THAT I AM A DULY REGISTERED PROFESSIONAL ENGINEER UNDER THE LAWS OF THE STATE OF MINNESOTA.
 Mark J. Graham
 DATE 2/10/95 REG. NO. 19130



1326 ENERGY PARK DRIVE
 ST. PAUL, MINNESOTA 55108
 (612) 644-4389
 9800 SHELARD PARKWAY
 MINNEAPOLIS, MINNESOTA 55441
 (612) 546-0432

DATE	DESCRIPTION	DESIGNED	CHECKED	DRAWN
2/95	GRADE REVISIONS	MVC	JR	IC
2/95	BETWEEN 24+00 TO 28+25			
2/95	ADDED HYD. EXTENSION			

CITY OF ELK RIVER
 STREET AN UTILITY IMPROVEMENTS
 ELGIN DRIVE
 DATE FEB, 1994 SHEET 8 OF 13 SHEETS PROJECT NO. 230-208