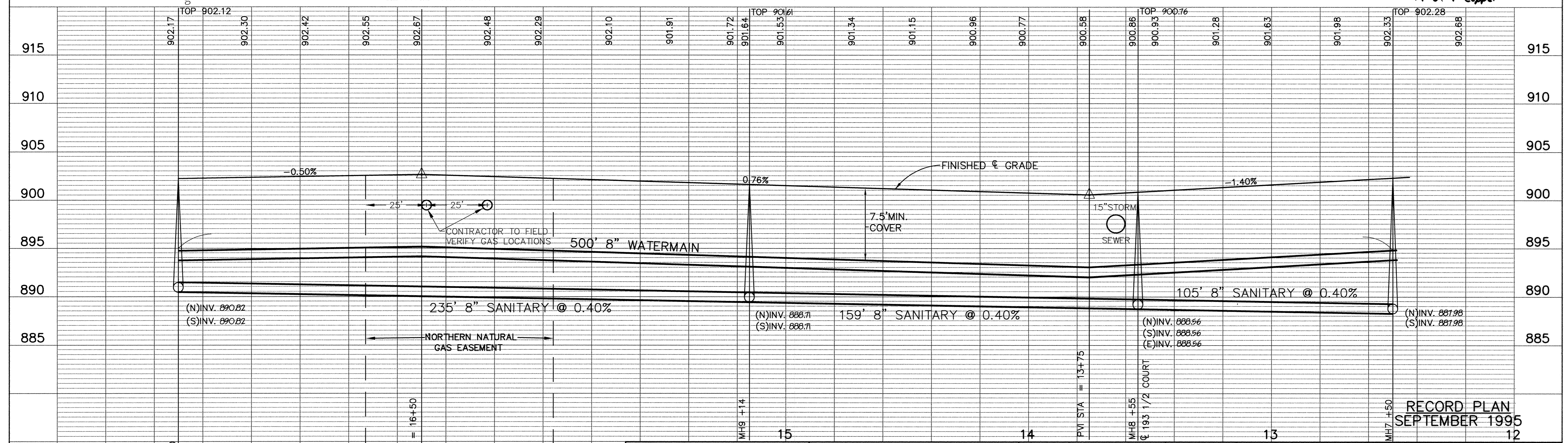
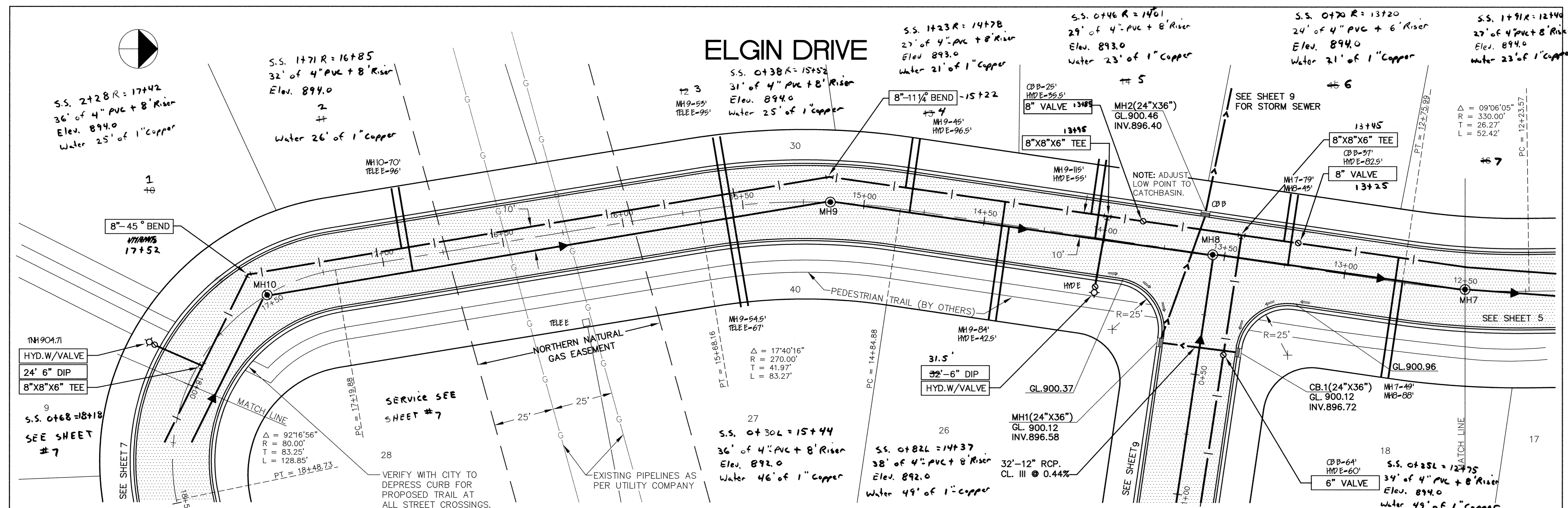


SAFCO PRODUCTS • NEW UPR, MINNESOTA  
REORDER BY PART NUMBER 6532

# ELGIN DRIVE



STATION	DESCRIPTION	DESIGNED	CHECKED	DRAWN
13+90±	ADDED 8" VALVE AT STATION 13+90±	MVG	RB	TC

I HEREBY CERTIFY THAT THIS PLAN, SPECIFICATION, OR REPORT WAS PREPARED BY ME OR UNDER MY DIRECT SUPERVISION AND THAT I AM A DULY REGISTERED PROFESSIONAL ENGINEER UNDER THE LAWS OF THE STATE OF MINNESOTA.

*Mark J. Graham*  
DATE 2/10/95 REG. NO. 19130



1326 ENERGY PARK DRIVE  
ST. PAUL, MINNESOTA 55108  
(612) 644-4389

9800 SHELARD PARKWAY  
MINNEAPOLIS, MINNESOTA 55441  
(612) 546-0432

DATE	DESCRIPTION	DESIGNED	CHECKED	DRAWN
2/95	ADDED 8" VALVE AT STATION 13+90±	MVG	RB	TC

CITY OF ELK RIVER  
STREET AND UTILITY IMPROVEMENTS  
ELGIN DRIVE

RECORD PLAN  
SEPTEMBER 1995