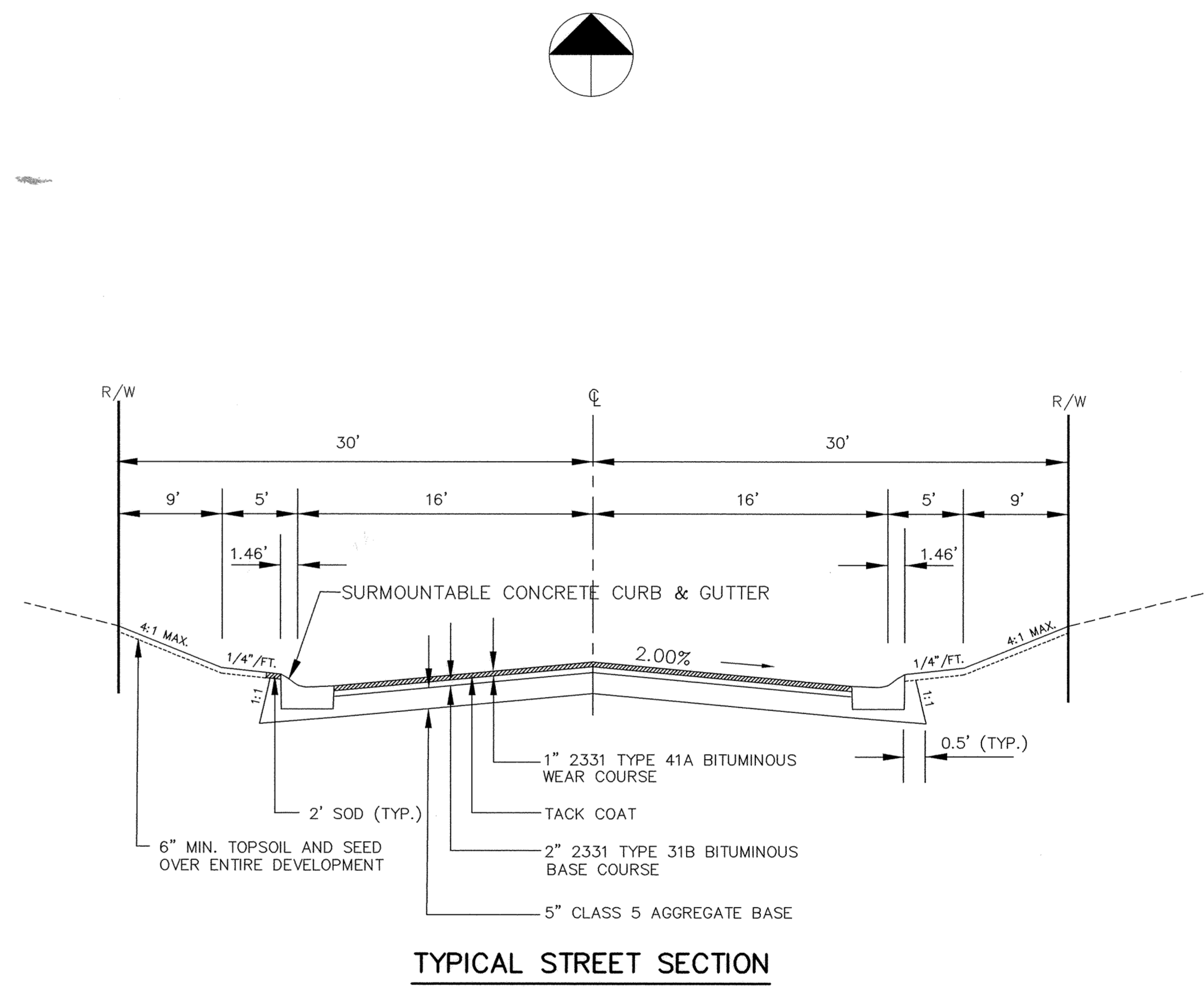
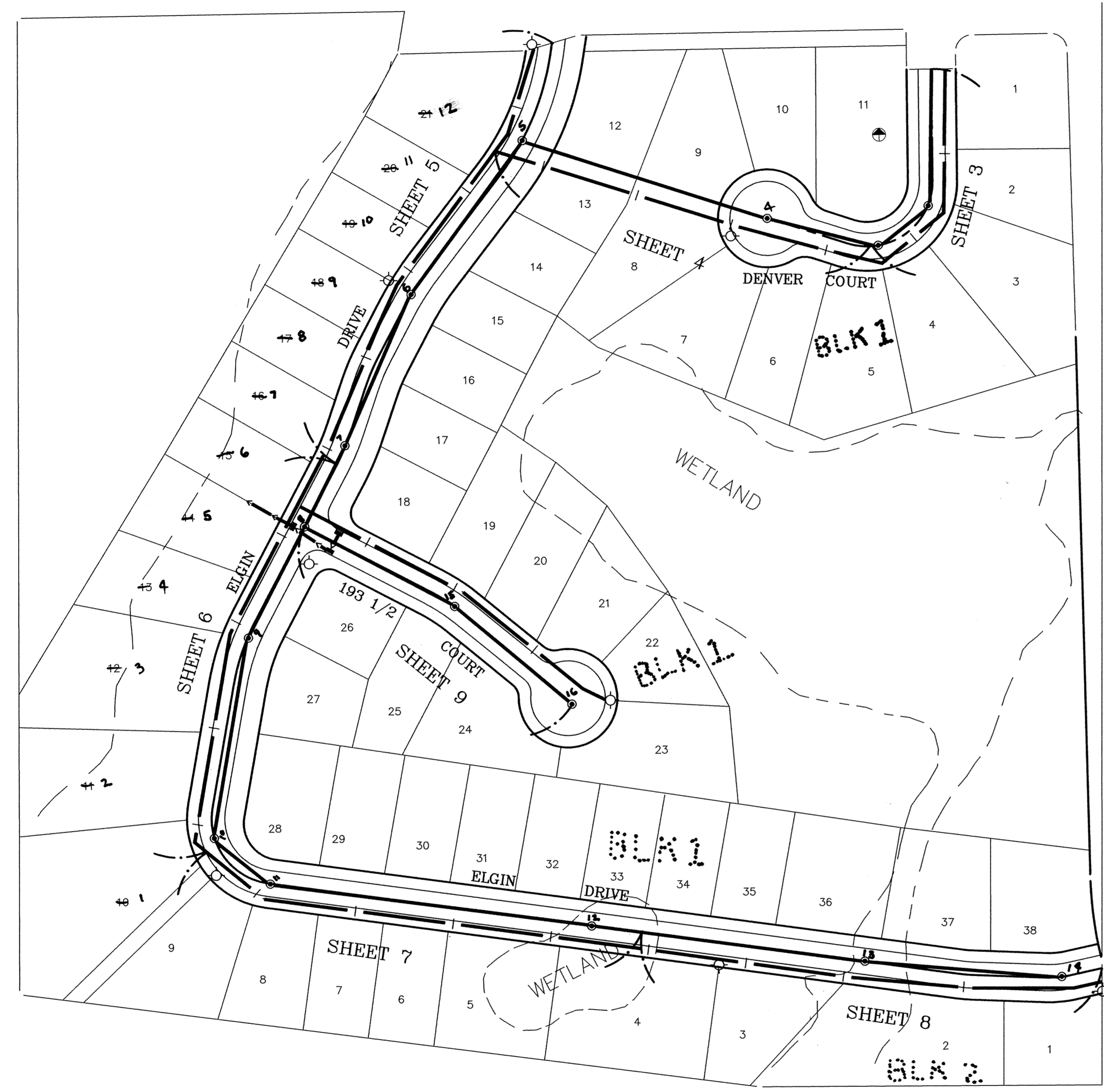


SDCO PRODUCTS • NEW HOPE, MINNESOTA  
REVISION BY PART NUMBER 0502

SDCO PRODUCTS • NEW HOPE, MINNESOTA  
REVISION BY PART NUMBER 0502

SDCO PRODUCTS • NEW HOPE, MINNESOTA  
REVISION BY PART NUMBER 0502

SDCO PRODUCTS • NEW HOPE, MINNESOTA  
REVISION BY PART NUMBER 0502



# MEADOWVALE HEIGHTS 2ND ADDITION

RECORD PLAN  
SEPTEMBER 1995

I HEREBY CERTIFY THAT THIS PLAN, SPECIFICATION, OR REPORT WAS PREPARED BY ME OR UNDER MY DIRECT SUPERVISION AND THAT I AM A DULY REGISTERED PROFESSIONAL ENGINEER UNDER THE LAWS OF THE STATE OF MINNESOTA.

*Mark J. Graham*  
DATE 2/16/95 REG. NO. 19130



1326 ENERGY PARK DRIVE  
ST. PAUL, MINNESOTA 55108  
(612) 644-4389

9800 SHELARD PARKWAY  
MINNEAPOLIS, MINNESOTA 55441  
(612) 546-0432

DATE	DESCRIPTION	DESIGNED

CHECKED \_\_\_\_\_  
DRAWN TC

GRAPHIC SCALE  
0 HORIZ. 100  
0 VERT.

CITY OF ELK RIVER  
MEADOWVALE HEIGHTS 2ND ADDITION  
LOCATION MAP AND TYPICAL SECTION

DATE FEB. 1994 SHEET 2 OF 13 SHEETS PROJECT NO. 230-208