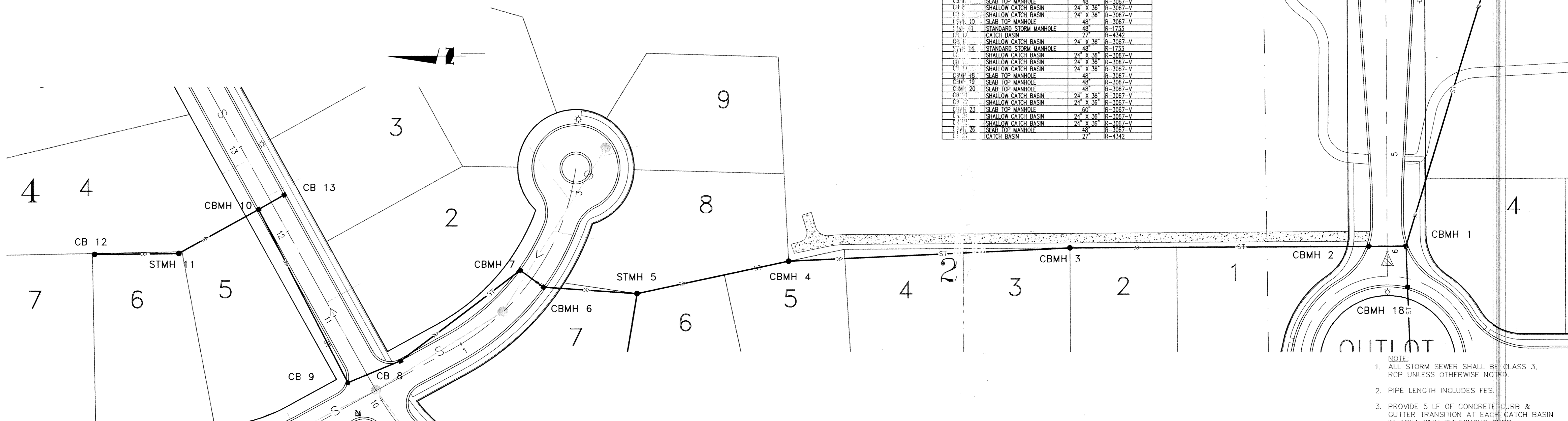
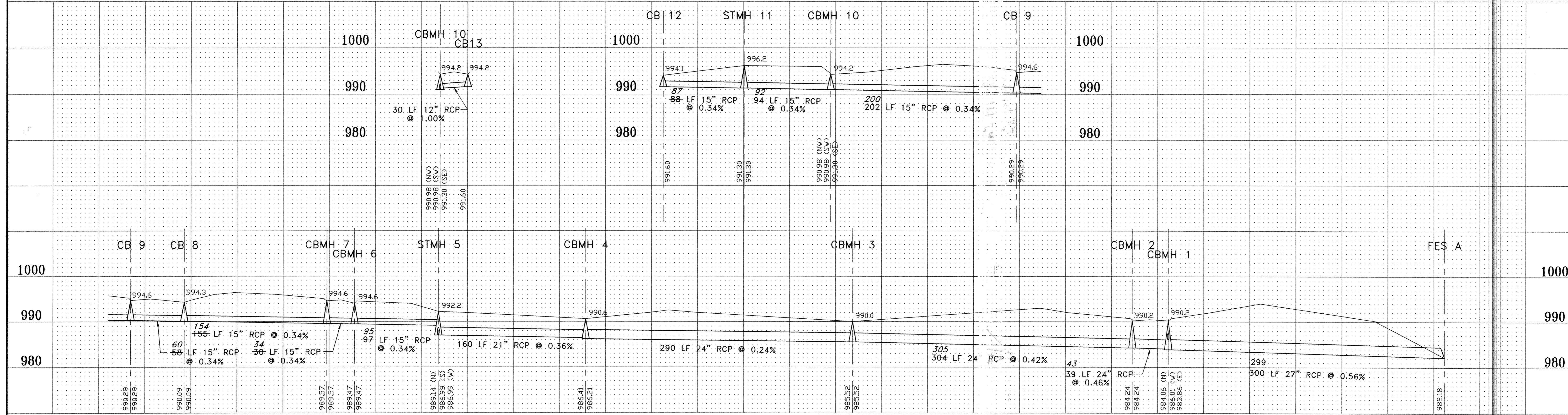


STORM SEWER STRUCTURE SCHEDULE

Struc No.	Type	Size	Castings (Neenah)
1	SLAB TOP MANHOLE	48"	R-3067-V
2	SLAB TOP MANHOLE	48"	R-3067-V
3	SLAB TOP MANHOLE	48"	R-4370 TYPE C
4	SLAB TOP MANHOLE	48"	R-4370 TYPE C
5	STANDARD STORM MANHOLE	48"	R-1733
6	SLAB TOP MANHOLE	48"	R-3067-V
7	SLAB TOP MANHOLE	48"	R-3067-V
8	SHALLOW CATCH BASIN	24' X 36'	R-3067-V
9	SHALLOW CATCH BASIN	24' X 36'	R-3067-V
10	SLAB TOP MANHOLE	48"	R-3067-V
11	STANDARD STORM MANHOLE	48"	R-1733
12	CATCH BASIN	27'	R-4342
13	SHALLOW CATCH BASIN	24' X 36'	R-3067-V
14	STANDARD STORM MANHOLE	48"	R-1733
15	SHALLOW CATCH BASIN	24' X 36'	R-3067-V
16	SHALLOW CATCH BASIN	24' X 36'	R-3067-V
17	SHALLOW CATCH BASIN	24' X 36'	R-3067-V
18	SLAB TOP MANHOLE	48"	R-3067-V
19	SLAB TOP MANHOLE	48"	R-3067-V
20	SLAB TOP MANHOLE	48"	R-3067-V
21	SHALLOW CATCH BASIN	24' X 36'	R-3067-V
22	SHALLOW CATCH BASIN	24' X 36'	R-3067-V
23	SLAB TOP MANHOLE	60"	R-3067-V
24	SHALLOW CATCH BASIN	24' X 36'	R-3067-V
25	SHALLOW CATCH BASIN	24' X 36'	R-3067-V
26	SLAB TOP MANHOLE	48"	R-3067-V
27	CATCH BASIN	27'	R-4342



- NOTE:
- ALL STORM SEWER SHALL BE CLASS 3, RCP UNLESS OTHERWISE NOTED.
 - PIPE LENGTH INCLUDES FES.
 - PROVIDE 5 LF OF CONCRETE CURB & GUTTER TRANSITION AT EACH CATCH BASIN IN AREA WITH BITUMINOUS CURB



RECORD PLAN

Revisions

No.	Date	By	Remarks
A	3/13/01	JHB	Revised CB 8 location, storm sewer schedule. Added note 3
B	1/6/05	MRJ	RECORD PLAN REVISIONS

I hereby certify that this plan was prepared by me or under my direct supervision and that I am a duly Registered Professional Engineer under the laws of the State of Minnesota.

Name: Paul Pearson Paul Pearson
 Date: 03/14/01
 Registration Number: 12795

Scale 1"=10' VERT
 1"=50' HORIZ

Designed: PWP
 Drawn: JHB
 Date: 03/14/01
 Checked: PWP
 Approved:

MFRA
 McCombs Frank Roos Associates, Inc.

Engineering • Planning • Surveying

15050 23rd Avenue North • Plymouth, Minnesota • 55447
 phone 612/476-6010 • fax 612/476-8532
 E-Mail: cadd@mfra.com

Client
Lyman Development
 Excelsior, MN

Project
Meadowoods Village
 Elk River, MN

Sheet Title
Storm Sewer

Sheet **11/17** B

Revision **B**

MFRA FILE NO.: 12896