

SURVEY NOTES:

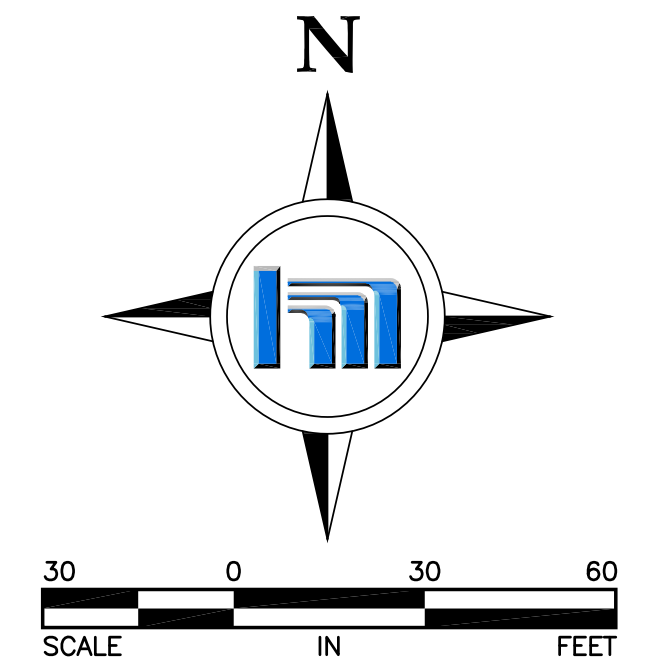
- The underground utilities shown have been located from field survey information per Gopher State One Call Ticket No. 193111632 and available records. The surveyor makes no guarantees that the underground utilities shown comprise all such utilities in the area, either in service or abandoned. The surveyor further does not warrant that the underground utilities shown are in the exact location indicated although he does certify that they are located as accurately as possible from information available. The surveyor has not physically located the underground utilities. Prior to any excavation, contact Gopher State One Call for an on-site location (651-454-0002). The subsurface utility information on this survey is utility quality level D. This quality level was determined according to the guidelines of CI/ASCE 38-2, entitled "Standard Guidelines for the Collection and Depiction of Existing Subsurface Utility Data."
- All spot elevations shown adjacent to curb are to top of curb unless noted otherwise.
- Bearings are based on Sherburne County Coordinate System NAD83 (1986 Adjustment).
- Boundary lines and easements are shown per record plat of BARRINGTON PLACE, available Sherburne County mapping, and provided documents. No field boundary survey was completed.
- Drainage/Surface Drainage/Storm Water Run-Off Easement encumbering Outlot A and part of Lot 4, Block 6 transferred to McDonald's Corporation (owner of Lots 5 & 6, Block 6) per Doc. No. 202456.



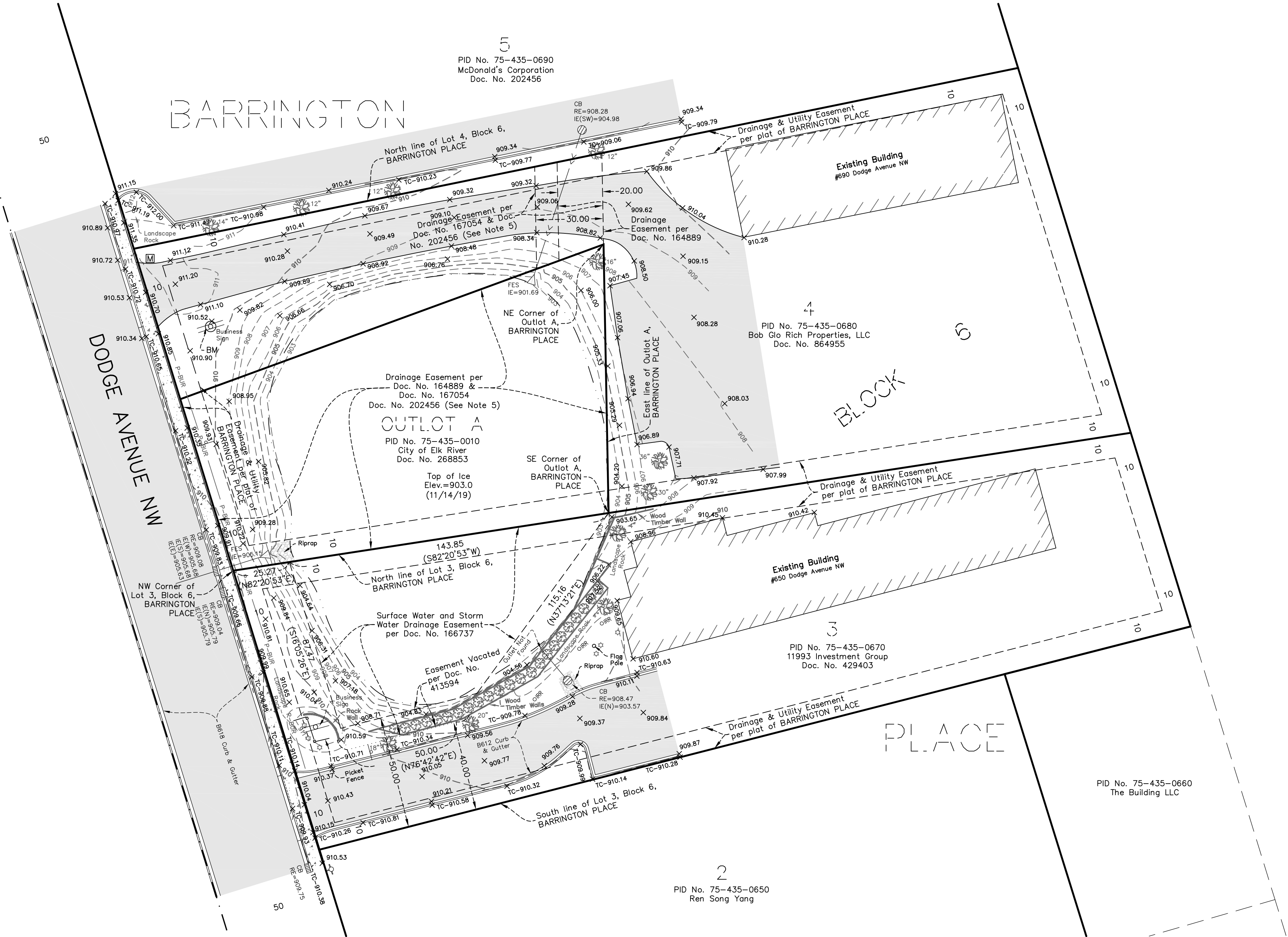
BENCHMARKS
 PROJECT BENCHMARK: MnDOT MONUMENT "LIQUOR MN141 RESET ELEVATION = 911.62 FEET (NAVD 1988)
 SITE BENCHMARK: WEST EDGE OF CONCRETE BASE TO BUSINESS SIGN AT #690 DODGE AVE. NW ELEVATION = 910.61 FEET (NAVD 1988)

LEGEND

- = DENOTES CATCHBASIN
- = DENOTES STORM SEWER LINE
- = DENOTES IRRIGATION HANDHOLE
- = DENOTES HYDRANT
- = DENOTES YARD LIGHT
- = DENOTES BURIED ELECTRIC
- = DENOTES SIGN
- = DENOTES MAIL/PAPER BOX
- = DENOTES DECIDUOUS TREE (DIAMETER)
- = DENOTES SHRUB
- = DENOTES SURFACE CONTOUR (1 FT. INTERVAL)
- = DENOTES SPOT ELEVATIONS
- = DENOTES CONCRETE SURFACE
- = DENOTES BITUMINOUS SURFACE
- = DENOTES CURB CUT
- = DENOTES EDGE OF WATER
- = DENOTES RECORD DIMENSION



284

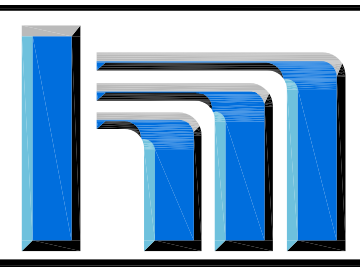


U.S. HIGHWAY 169

DATE	REVISION

I hereby certify that this survey, plan or report was prepared by me or under my direct supervision and that I am a duly Licensed Professional Land Surveyor under the laws of the State of Minnesota.
Charles R. Christopherson
 Charles R. Christopherson, PLS
 Date 11/22/19 Lic. No. 18420

DESIGNED BY: SMM	DATE: 11/21/19
DRAWN BY: RDM/SMM	FILE NO.:
CHECKED BY: CRC	ER102



Hakanson Anderson
 Civil Engineers and Land Surveyors
 3601 Thurston Ave., Anoka, Minnesota 55303
 763-427-5860 FAX 763-427-0520
 www.haa-inc.com



SITE SURVEY
 FOR
 CITY OF ELK RIVER
 OF
 "McDONALD'S POND"

SHEET	1	OF	1
SHEETS			