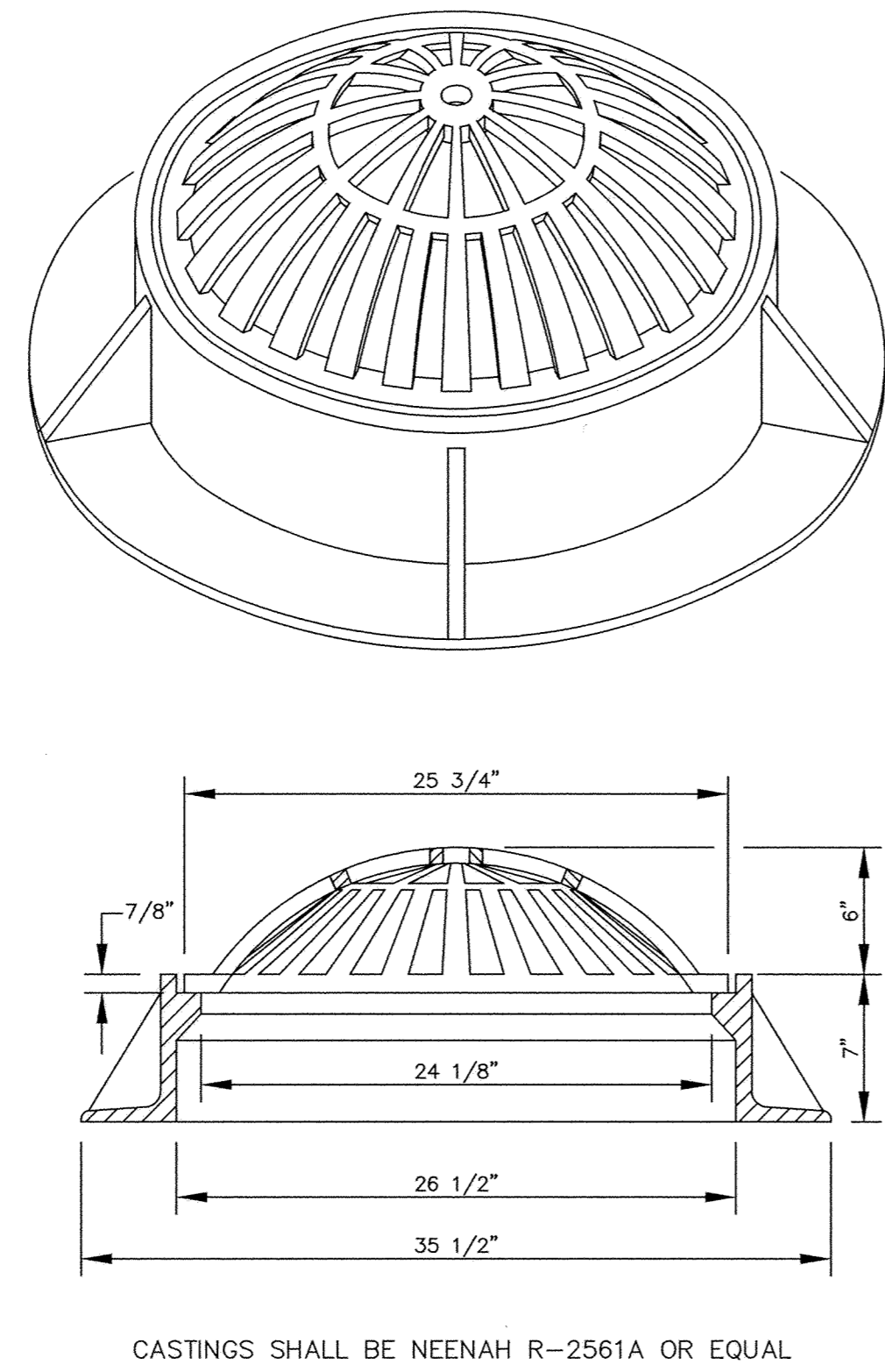
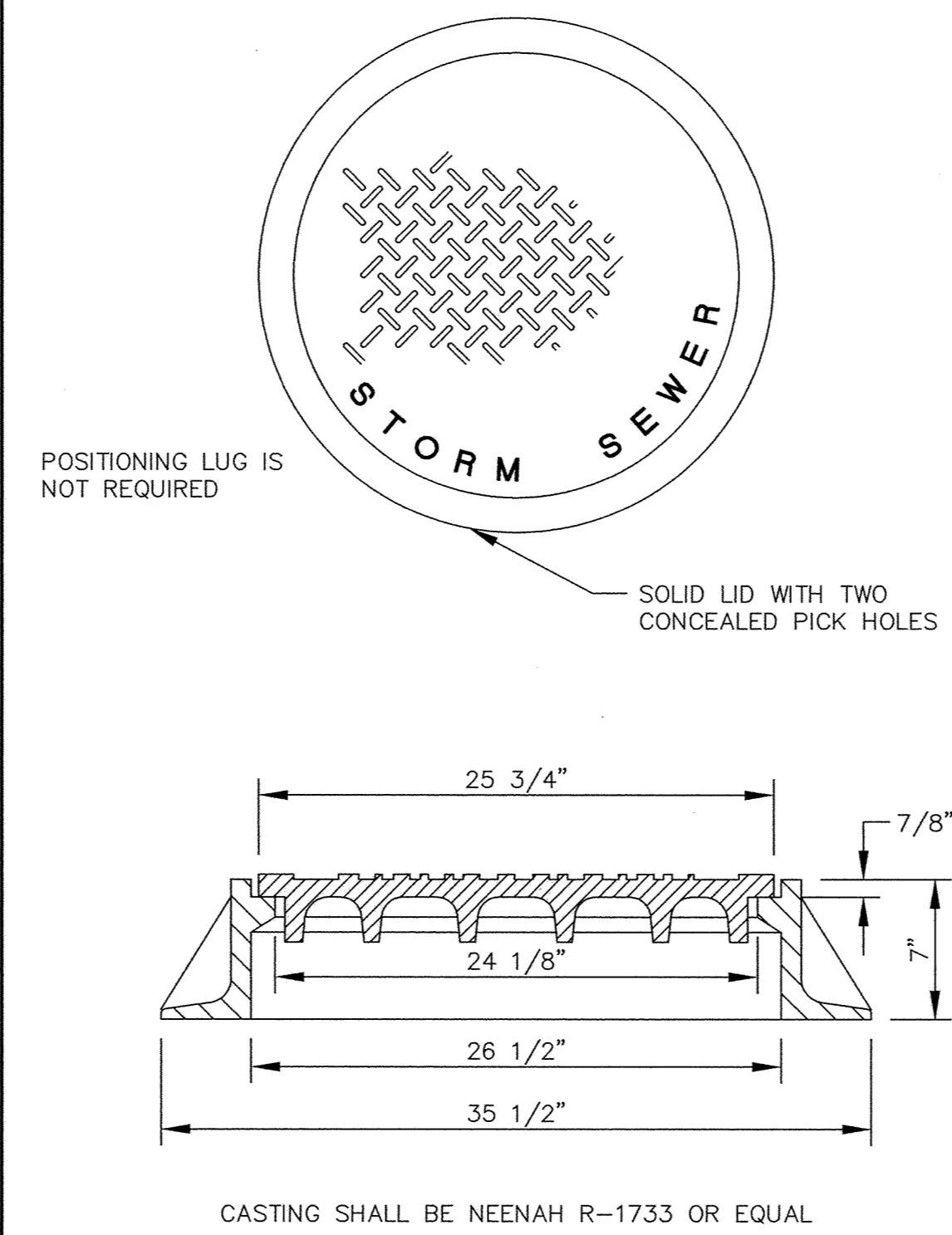


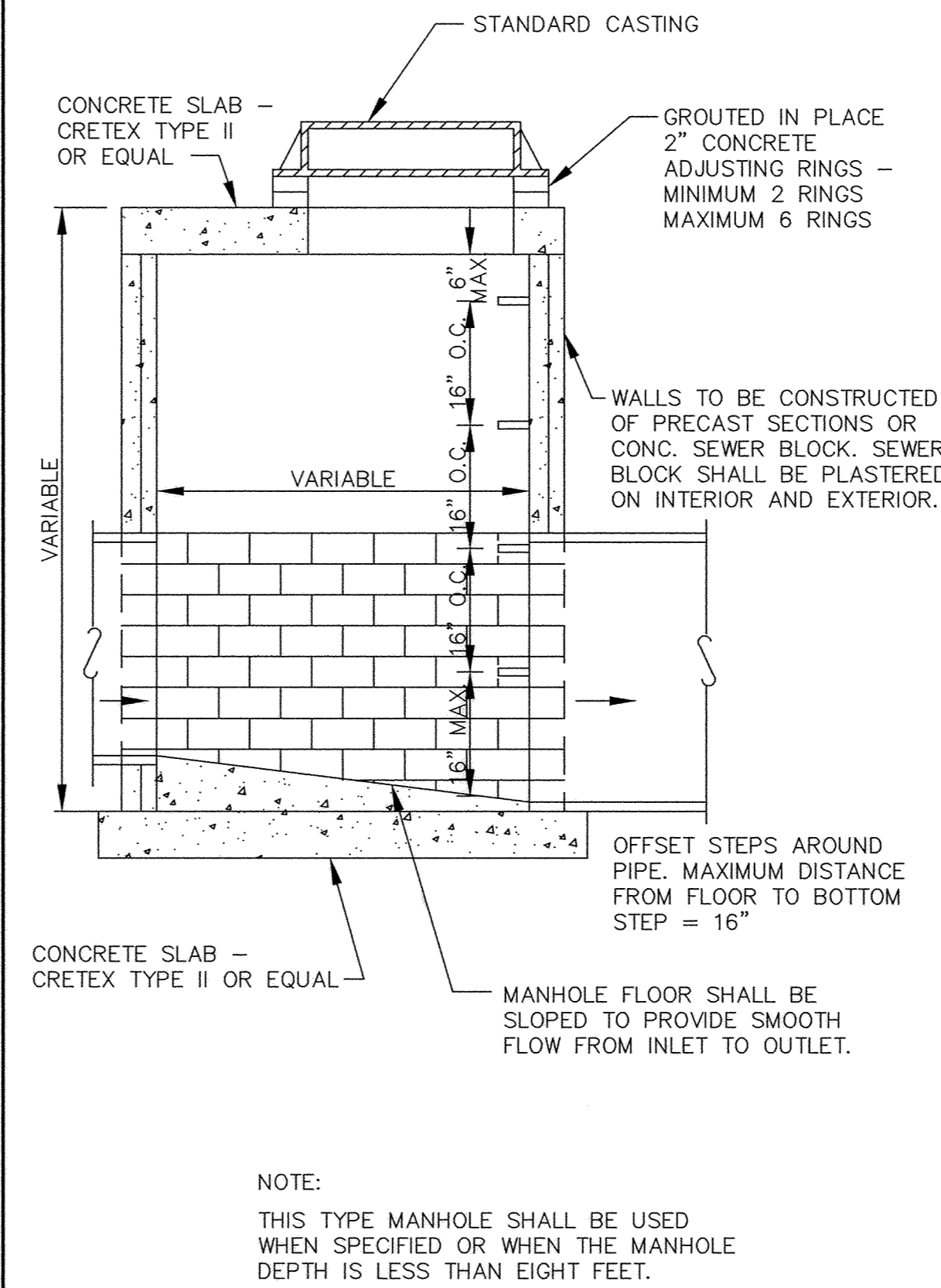
RIP-RAP INSTALLATION



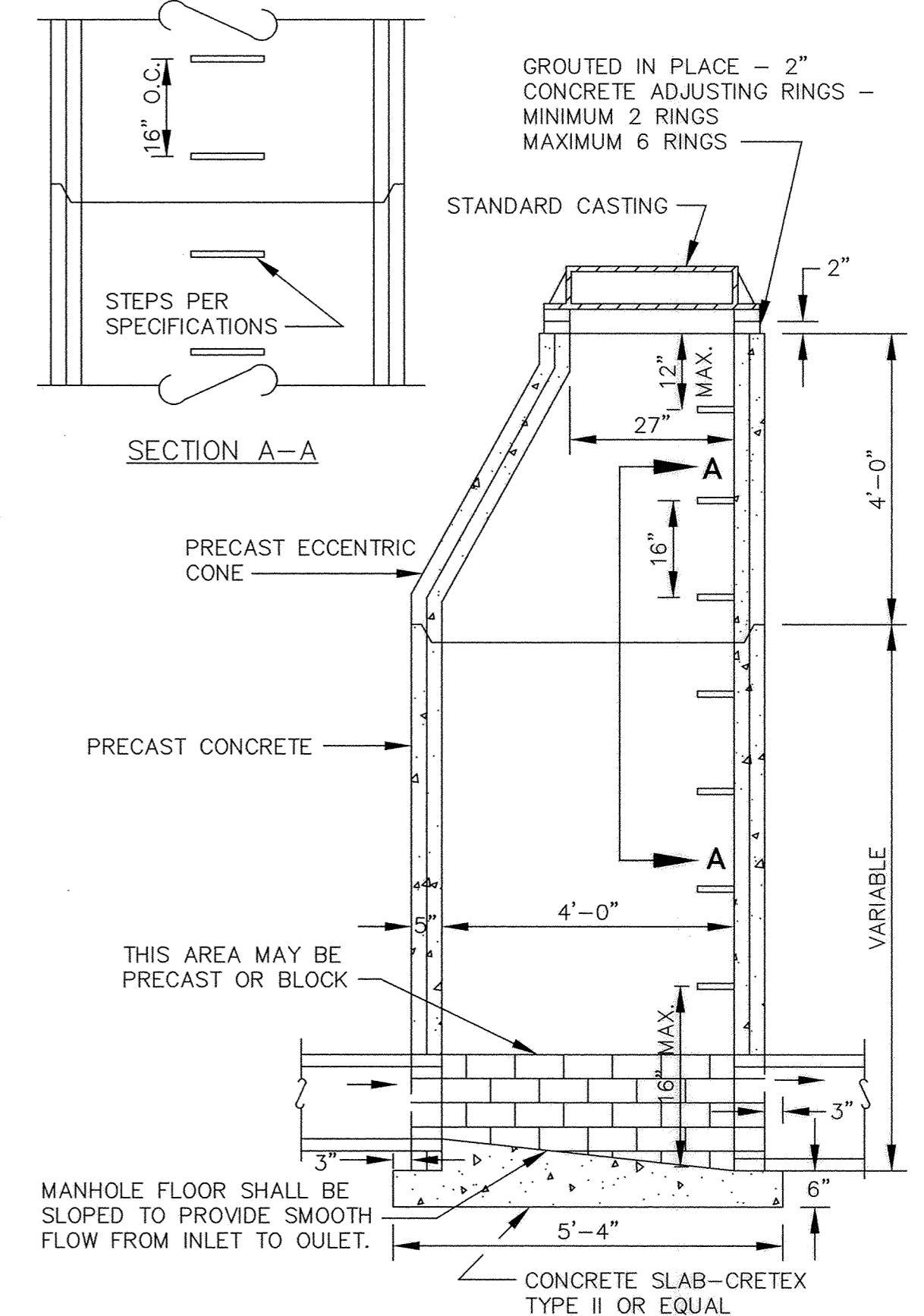
BEEHIVE CASTING



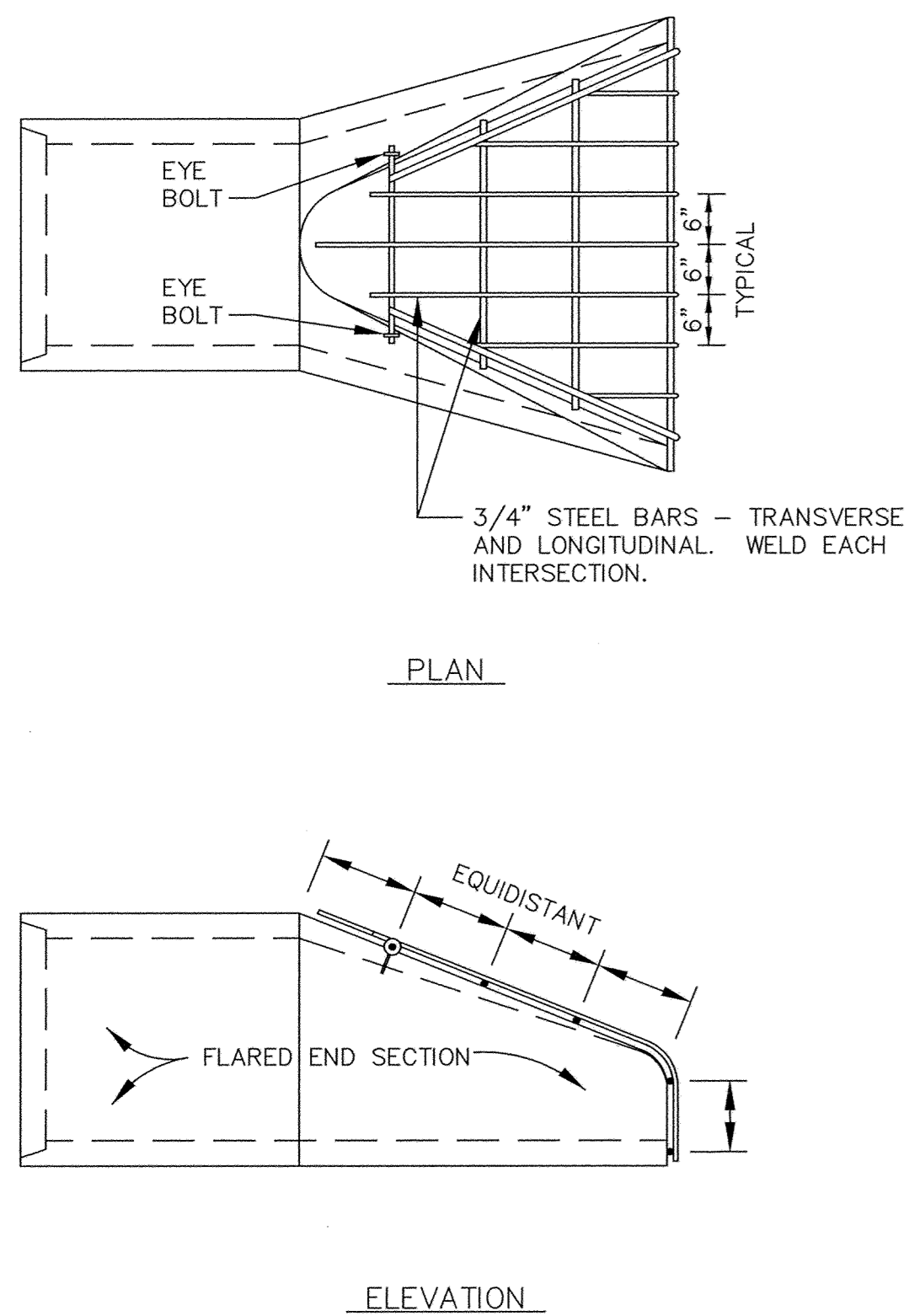
STANDARD MANHOLE CASTING



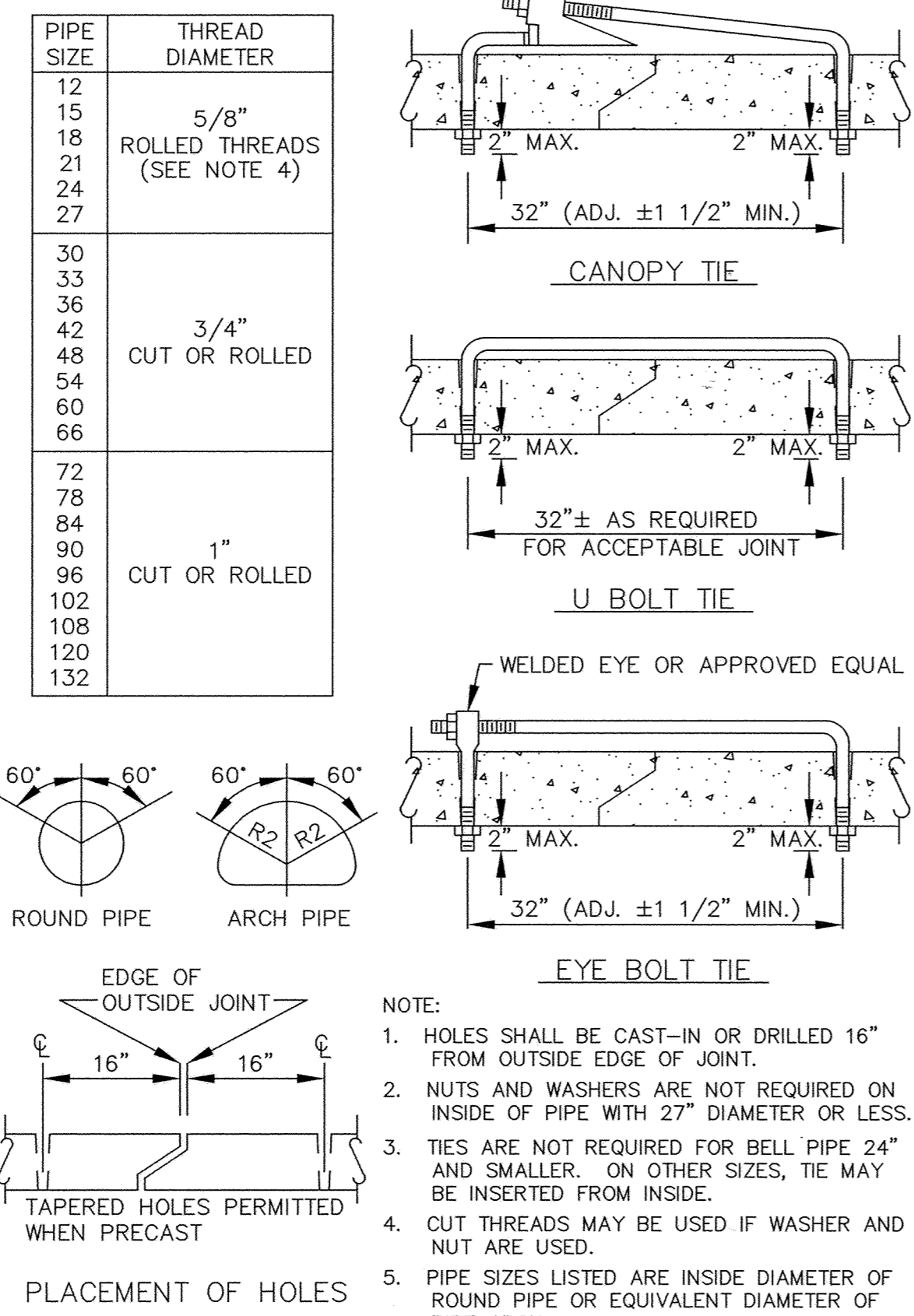
SLAB TOP MANHOLE



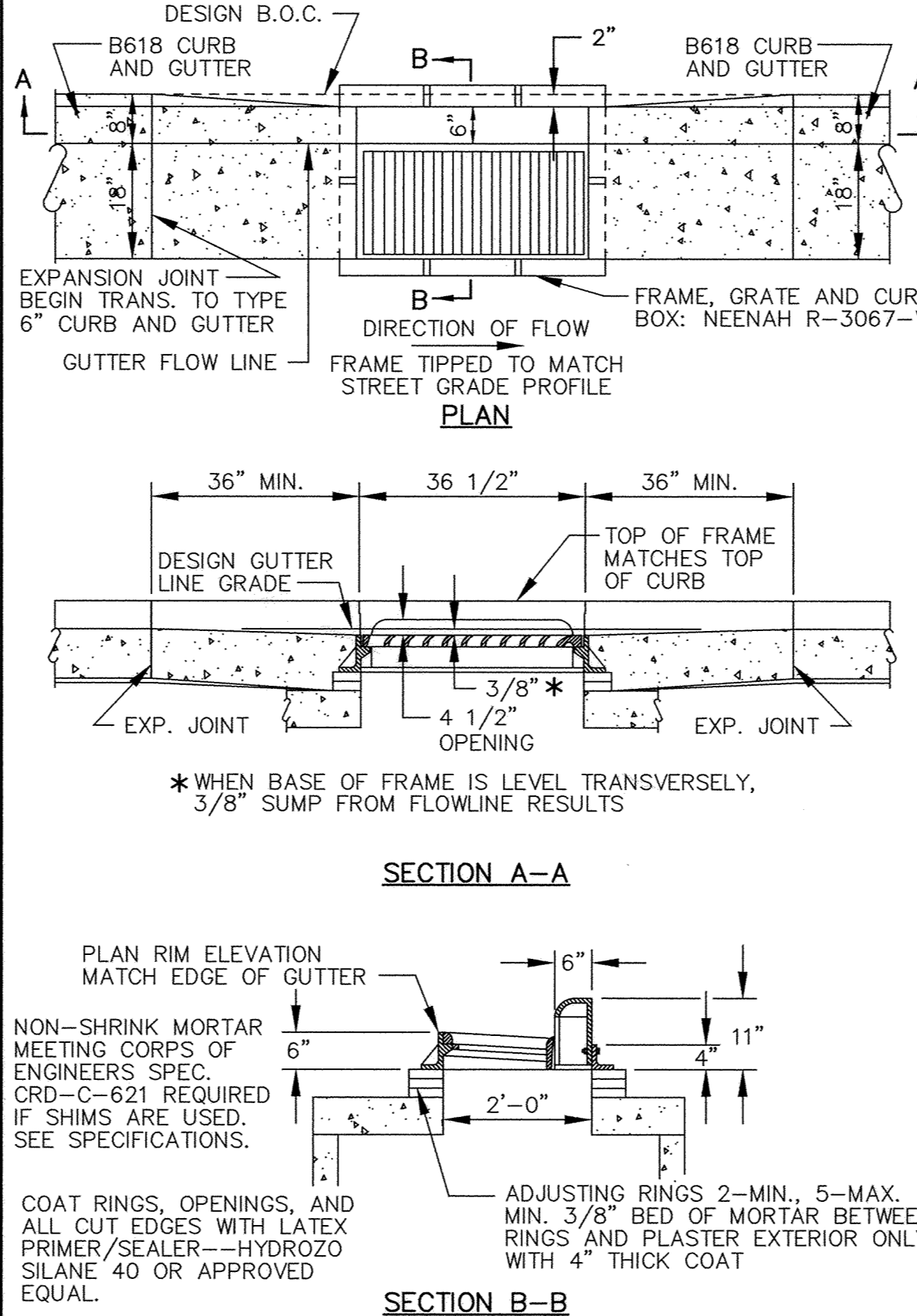
STANDARD MANHOLE



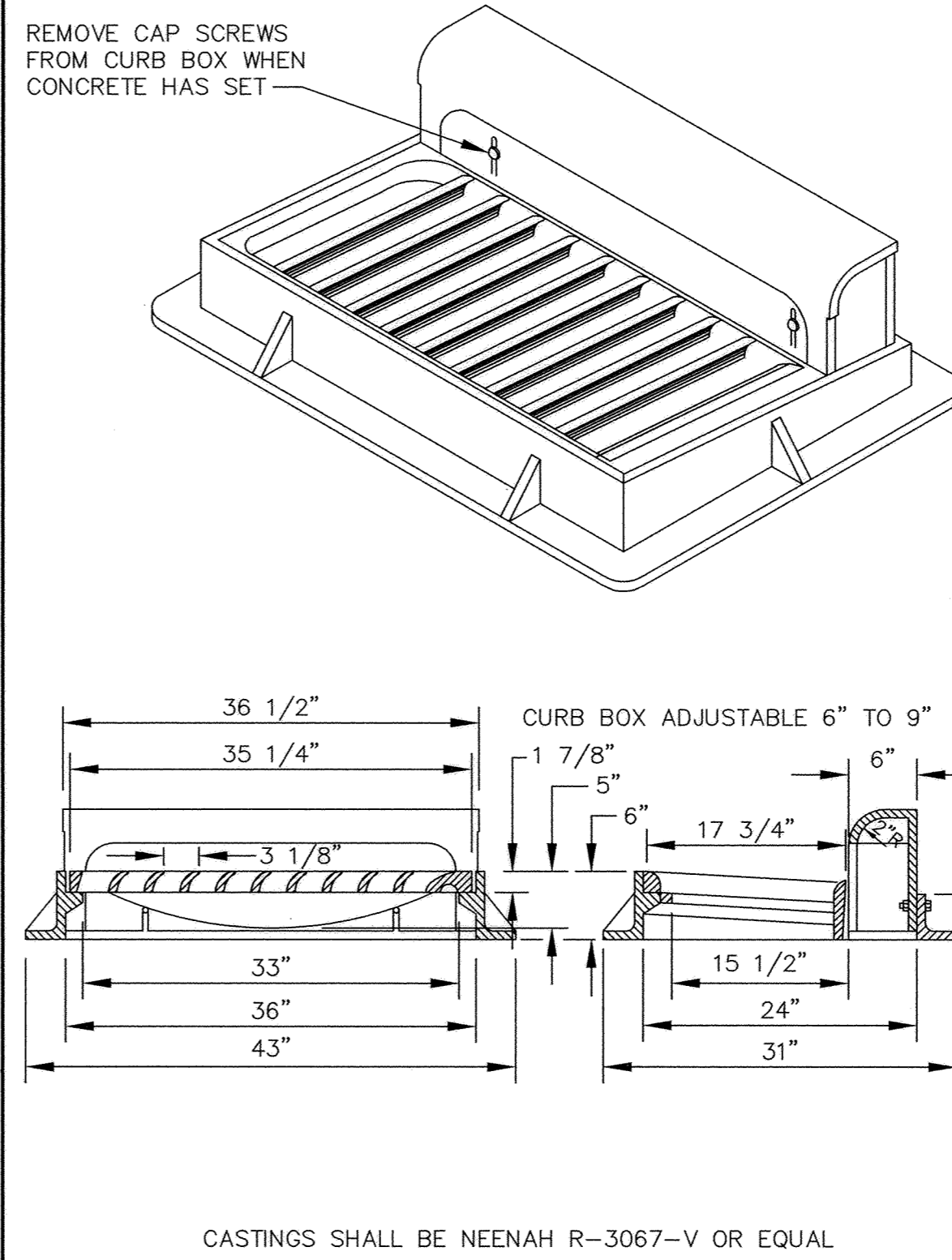
TRASH GUARD



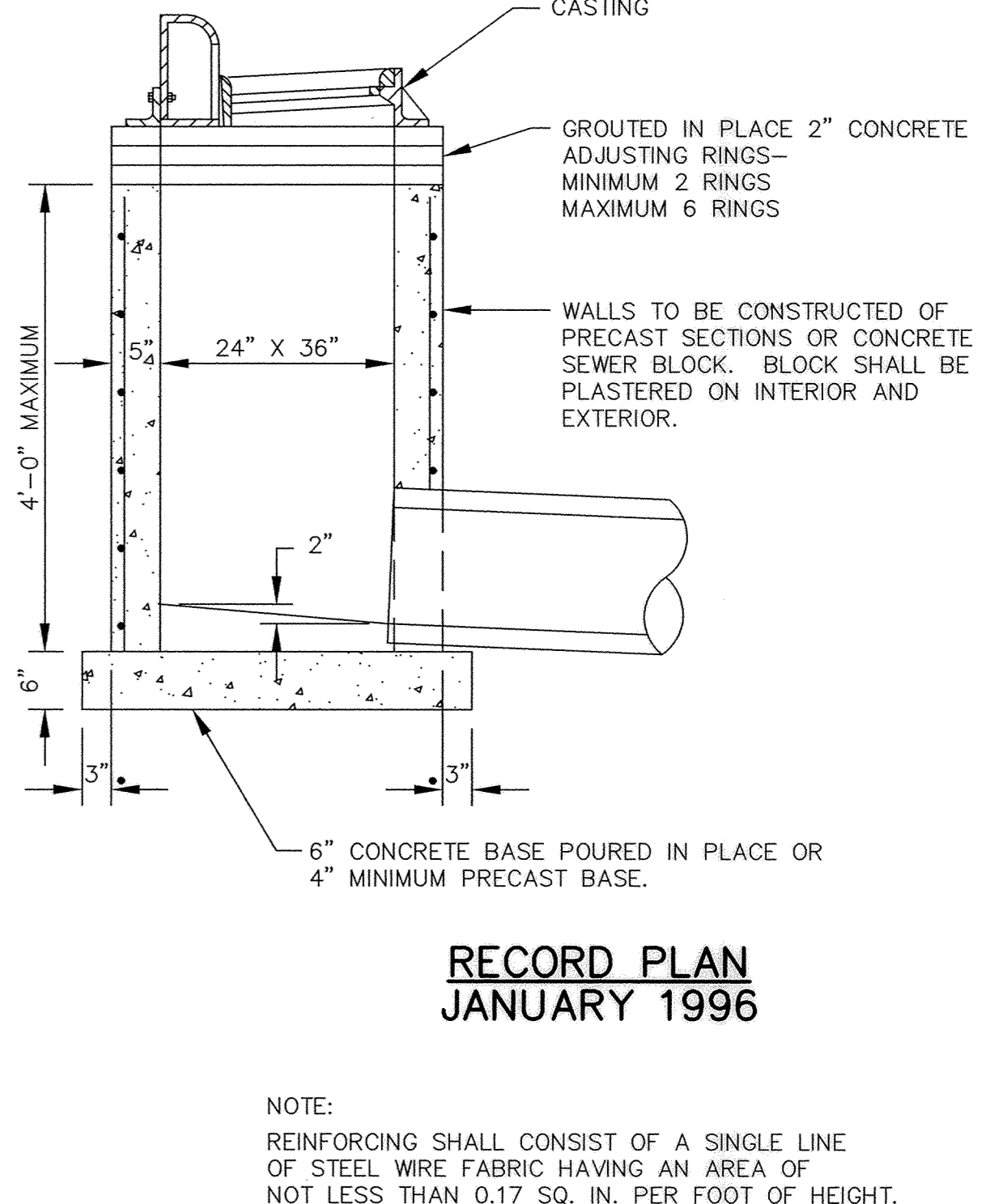
CONCRETE PIPE JOINT TIES



CATCH BASIN FRAME PLACEMENT B618 CURB AND GUTTER



STANDARD INLET CASTING



SHALLOW CATCH BASIN

I HEREBY CERTIFY THAT THIS PLAN, SPECIFICATION, OR REPORT WAS PREPARED BY ME OR UNDER MY DIRECT SUPERVISION AND THAT I AM A DULY REGISTERED PROFESSIONAL ENGINEER UNDER THE LAWS OF THE STATE OF MINNESOTA.
Mark J. Lusham
 DATE 5/25/95 REG. NO. 19130



1326 ENERGY PARK DRIVE
 ST. PAUL, MINNESOTA 55108
 (612) 644-4389
 5075 WAYZATA BLVD. SUITE #225
 MINNEAPOLIS, MINNESOTA 55416
 (612) 546-0432

DATE	DESCRIPTION	DESIGNED

CITY OF ELK RIVER
 MAIN STREET / EVANS AVENUE
 STORM SEWER CONSTRUCTION
 STORM SEWER DETAILS
 DATE MAY 1995 SHEET 17 OF 18 SHEETS PROJECT NO. 230-265