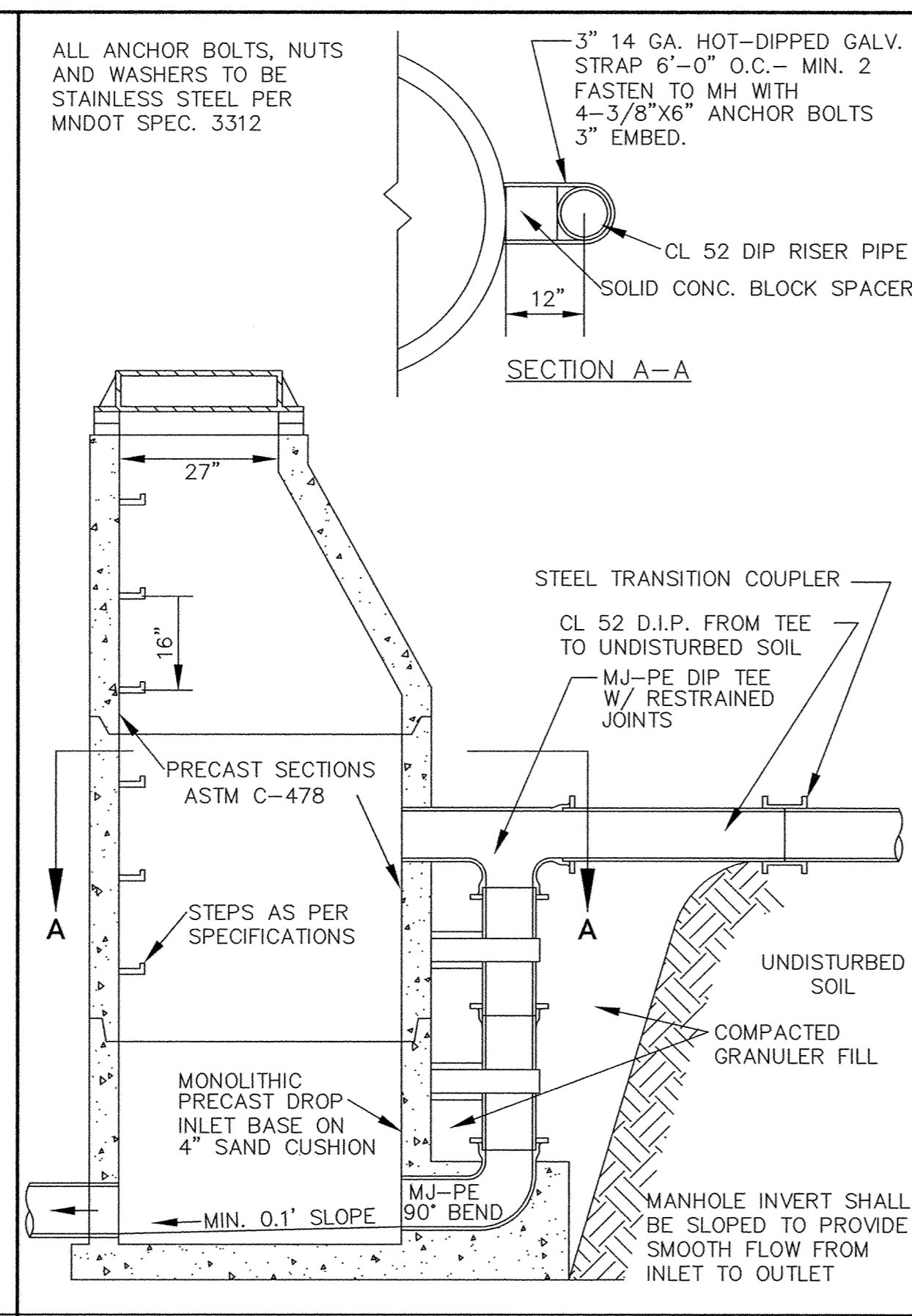
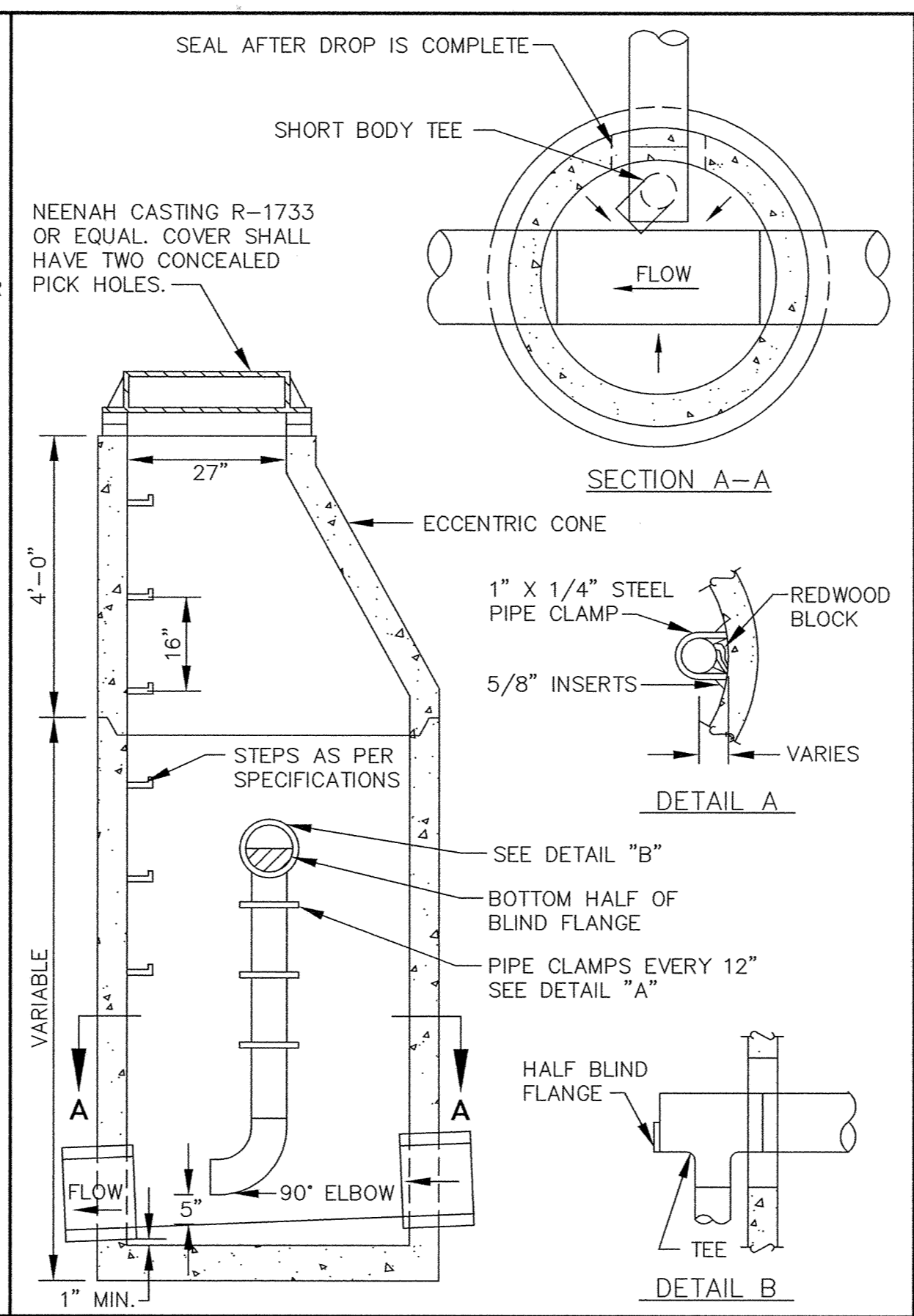


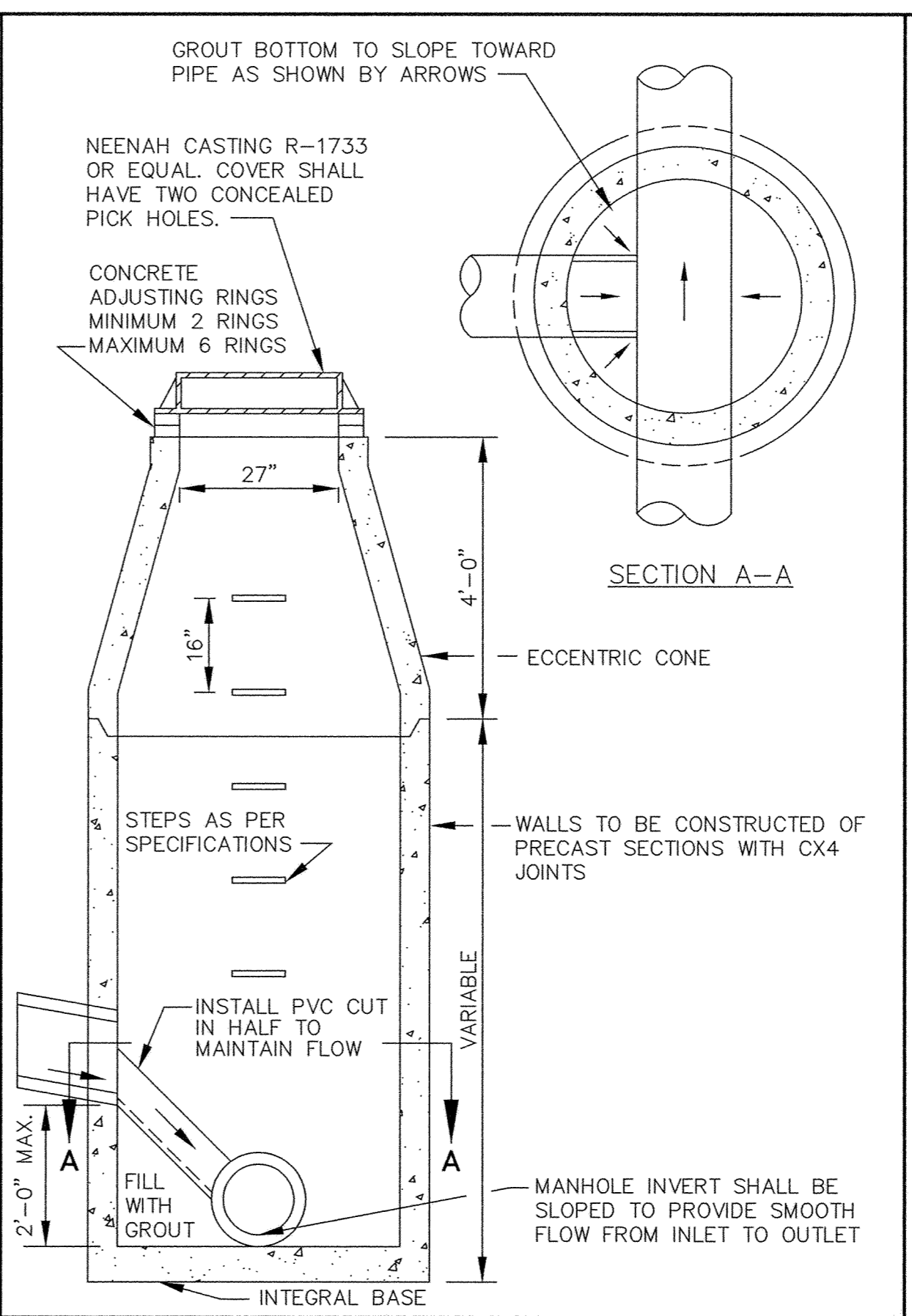
STANDARD AIR RELIEF MANHOLE



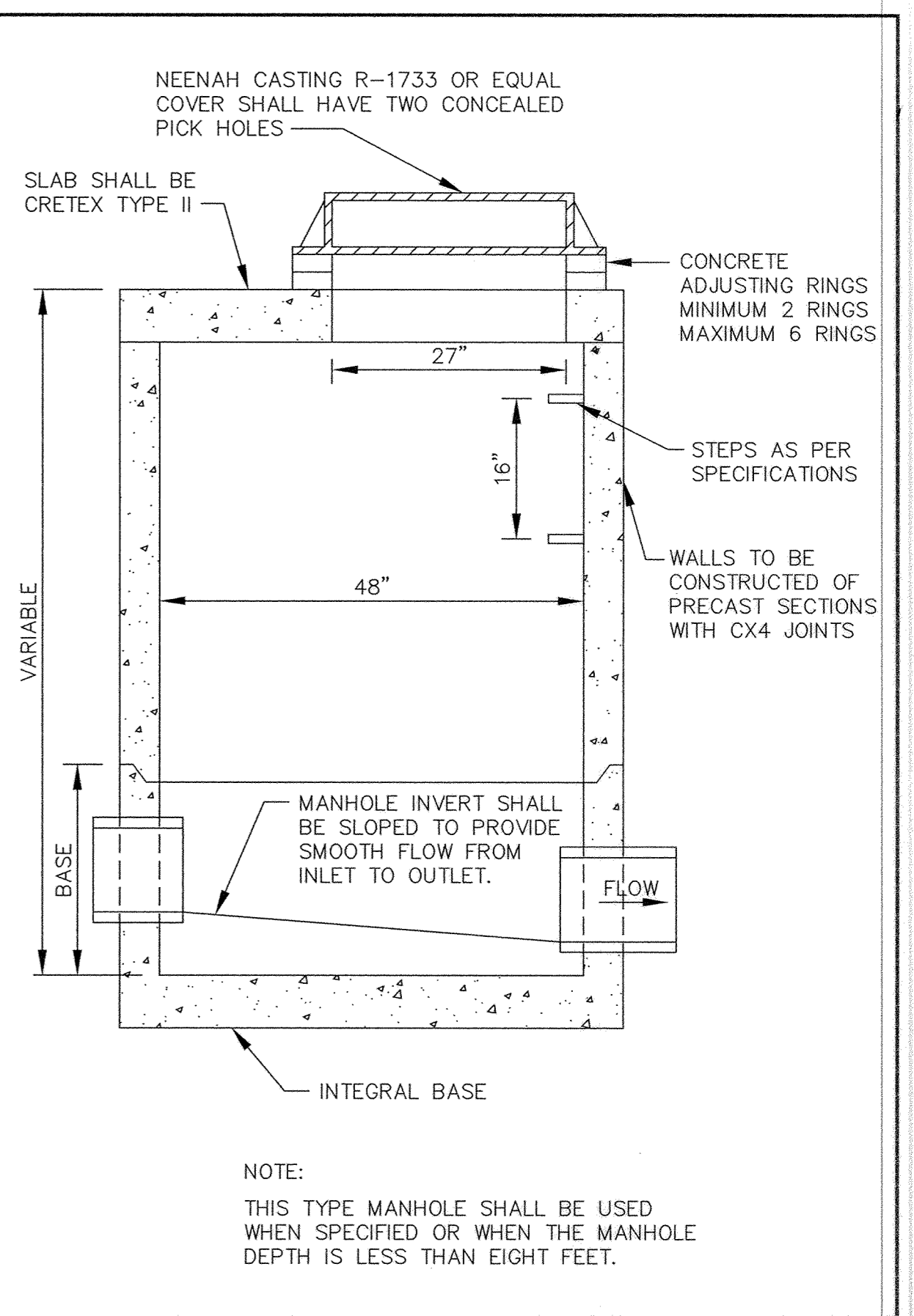
OUTSIDE DROP MANHOLE



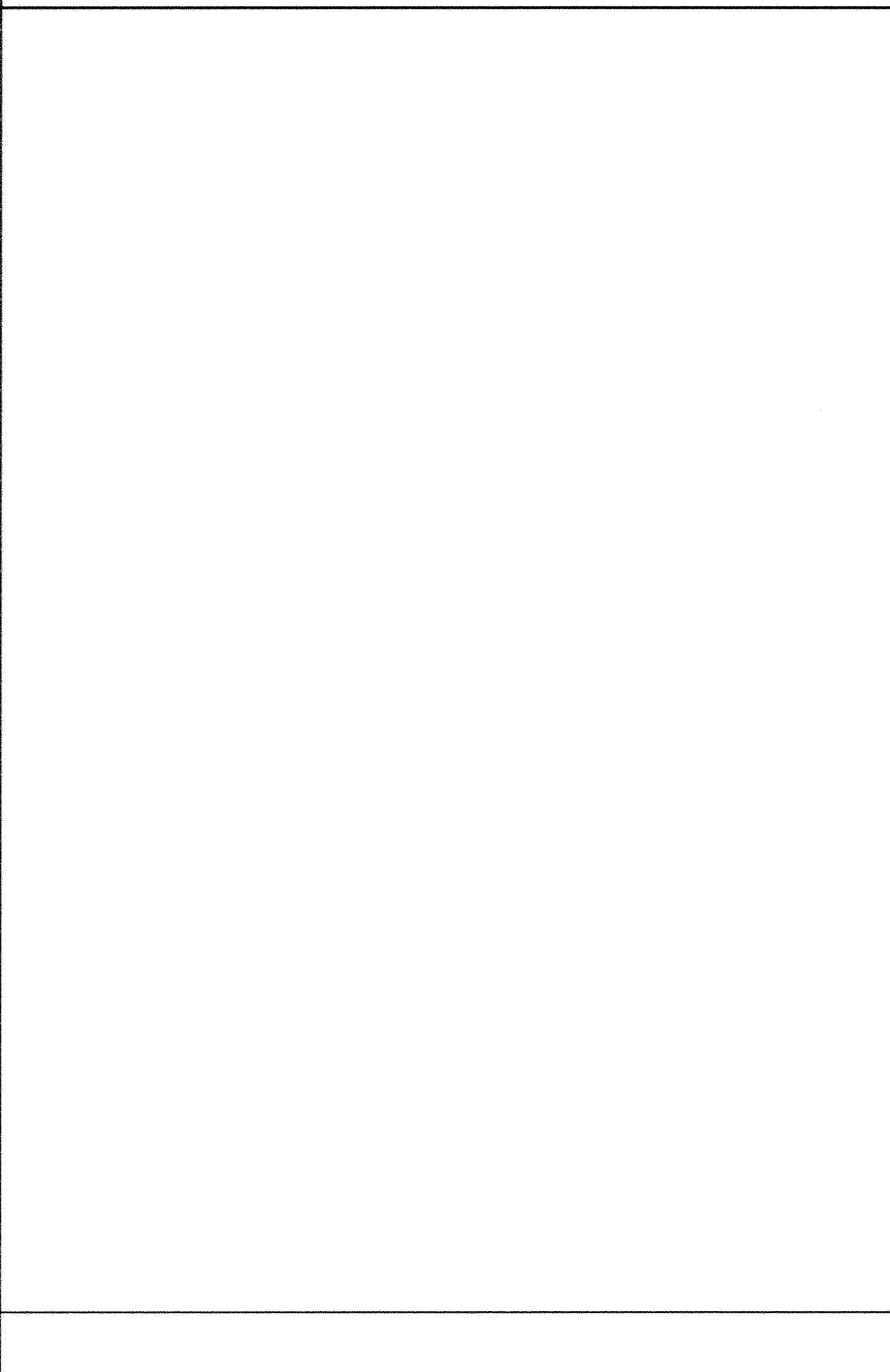
INSIDE DROP MANHOLE



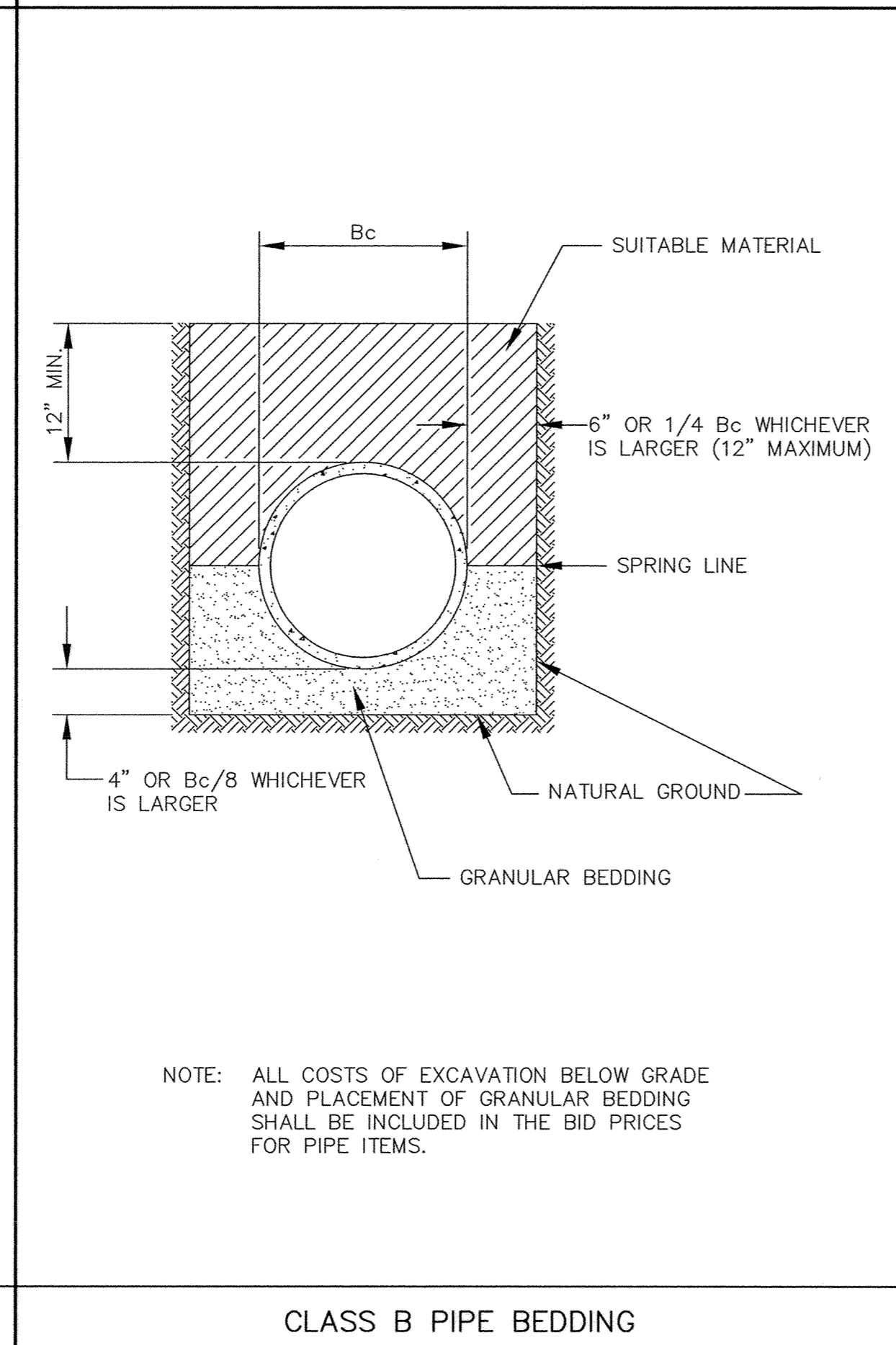
INSIDE DROP MANHOLE (TWO FEET OR LESS)



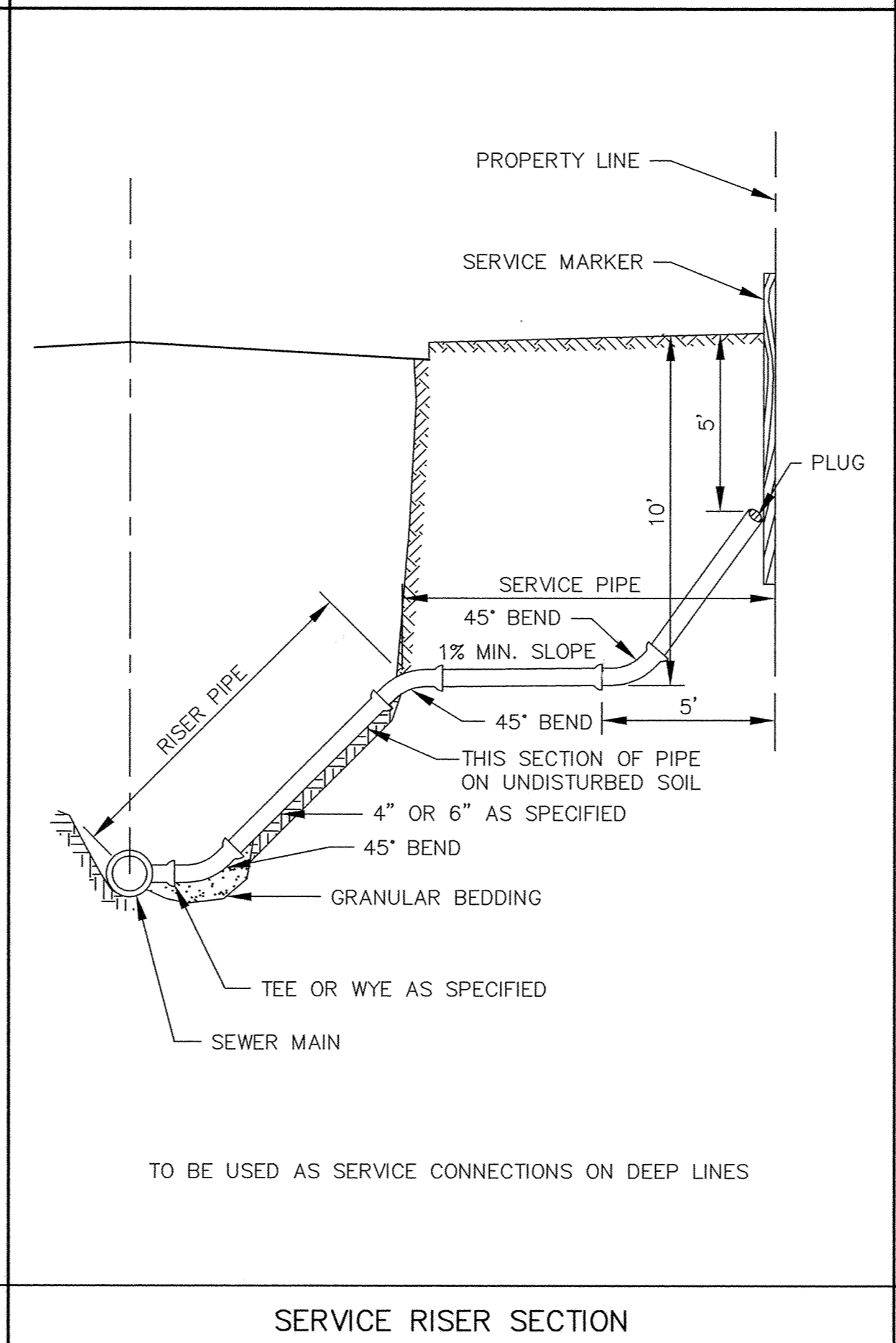
SLAB TOP MANHOLE



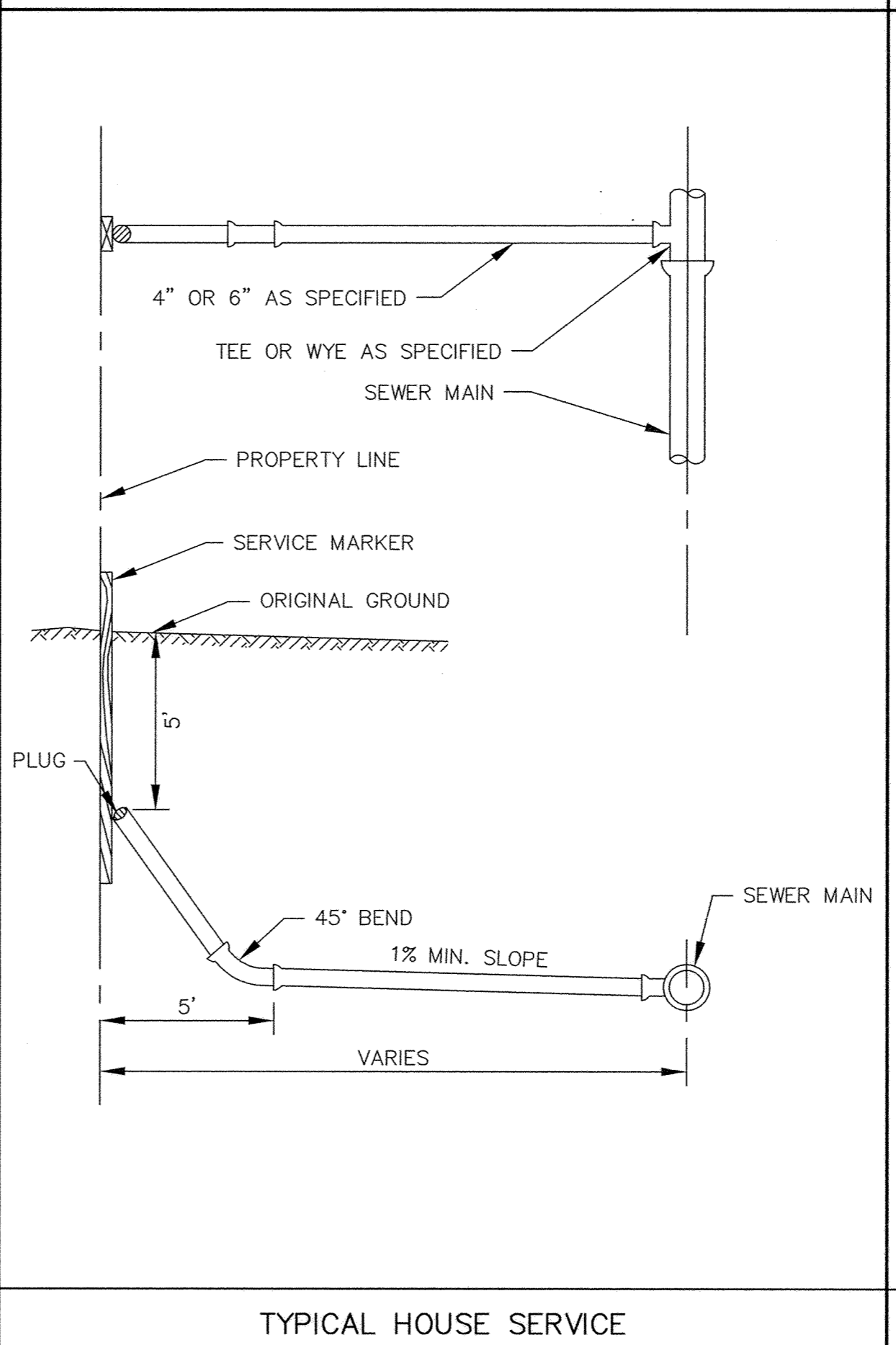
CLASS B PIPE BEDDING



SERVICE RISER SECTION



TYPICAL HOUSE SERVICE



STANDARD MANHOLE

ER265SAN

NOTE: ALL COSTS OF EXCAVATION BELOW GRADE AND PLACEMENT OF GRANULAR BEDDING SHALL BE INCLUDED IN THE BID PRICES FOR PIPE ITEMS.

I HEREBY CERTIFY THAT THIS PLAN, SPECIFICATION, OR REPORT WAS PREPARED BY ME OR UNDER MY DIRECT SUPERVISION AND THAT I AM A DULY REGISTERED PROFESSIONAL ENGINEER UNDER THE LAWS OF THE STATE OF MINNESOTA.  
*Mark J. Graham*  
DATE 5/25/93 REG. NO. 19130

1326 ENERGY PARK DRIVE ST. PAUL, MINNESOTA 55108 (612) 644-4389	5075 WAYZATA BLVD. SUITE #225 MINNEAPOLIS, MINNESOTA 55416 (612) 546-0432
DESIGNED _____ CHECKED _____ DRAWN _____	GRAPHIC SCALE 0 HORIZ. N/A 0 VERT. _____
REVISIONS	DATE MAY 1995

CITY OF ELK RIVER  
MAIN STREET / EVANS AVENUE  
STORM SEWER CONSTRUCTION  
SANITARY SEWER DETAILS  
DATE MAY 1995 SHEET 16 OF 18 SHEETS PROJECT NO. 230-265