

CONSTRUCTION NOTES:

THE 1988 EDITION OF THE MINNESOTA DEPARTMENT OF TRANSPORTATION "STANDARD SPECIFICATIONS FOR CONSTRUCTION" AS AMENDED BY THE JANUARY 2, 1991, SUPPLEMENTAL SPECIFICATION SHALL GOVERN.

THE FIRST DIGIT OR THE FIRST TWO DIGITS OF EACH BAR MARK INDICATE THE BAR SIZE. BARS MARKED WITH THE SUFFIX "E" SHALL BE EPOXY COATED.

BRIDGE SEAT REINFORCEMENT SHALL BE CAREFULLY PLACED TO AVOID INTERFERENCE WITH DRILLING HOLES FOR ANCHOR RODS. THE SUPERSTRUCTURE BEAMS SHALL BE PLACED IN THEIR FINAL POSITION PRIOR TO DRILLING HOLES FOR ANCHOR RODS.

BENCH MARK: ELEV.881.34 (M.S.L. 1929 ADJ.) TOP NUT HYDRANT, EAST SIDE OF MAIN STREET 300' +/- NO. OF ORONO DAM, CITY OF ELK RIVER.

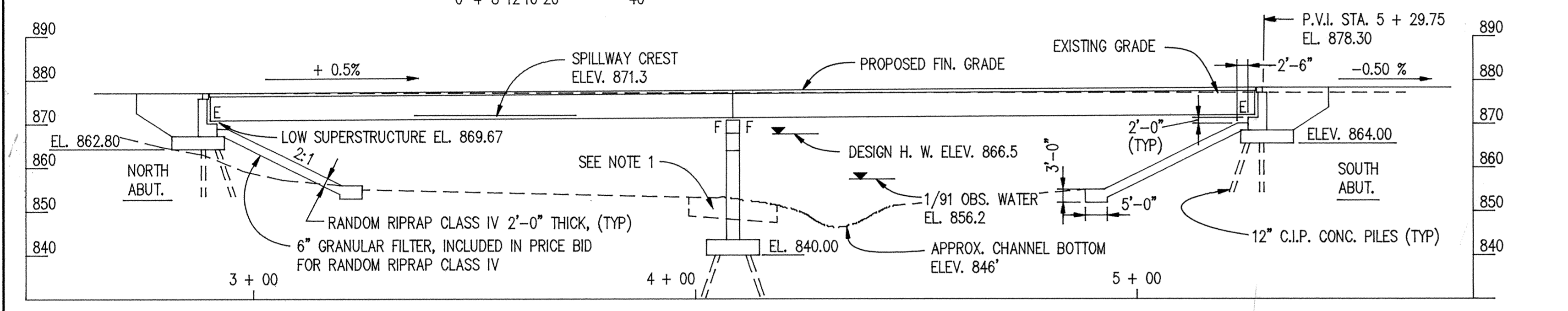
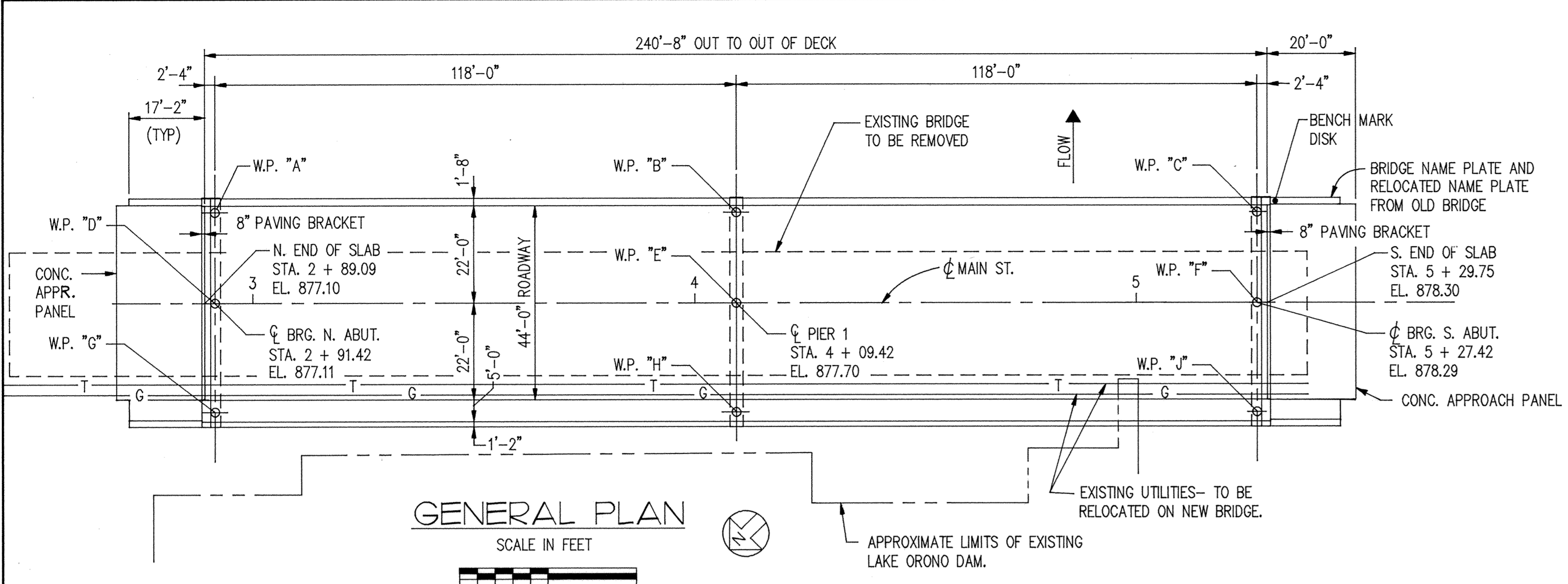
DESIGN DATA

1989 AND CURRENT INTERIM AASHTO DESIGN SPECIFICATIONS LOAD FACTOR DESIGN METHOD. HS25 DESIGN LIVE LOAD. DEAD LOAD INCLUDES 17 PSF ALLOWANCE FOR FUTURE WEARING COURSE MODIFICATIONS. MAXIMUM ALLOWABLE DESIGN STRESSES:

REINFORCED CONCRETE: f'c = 4000 PSI, n = 8; fy = 60,000 PSI (GR 60 REINF.)
PRESTRESSED CONCRETE: f'c = 7000 PSI, n = 6; f's = 270,000 PSI (270 KSI STRAND); .75 F's INITIAL PRESTRESS (LOW LAX STRANDS); PROJ. ADT = 6292 (2011)

SHEET INDEX

Table with 2 columns: NO. and DESCRIPTION. Lists 24 sheets including GENERAL PLAN AND ELEVATION, BRIDGE LAYOUT, SOUTH ABUTMENT, etc.



NOTES:

- 1.) RANDOM RIPRAP CLASS V, 4'-0" THICK, 9" GRANULAR FILTER, INCLUDED IN PRICE BID FOR RANDOM RIPRAP CLASS V.
2.) REMOVE EXISTING BRIDGE PIERS TO BOTTOM OF FOOTINGS. BACKFILL TO 4'-9" BELOW CHANNEL BOTTOM WITH COMMON MATERIAL...

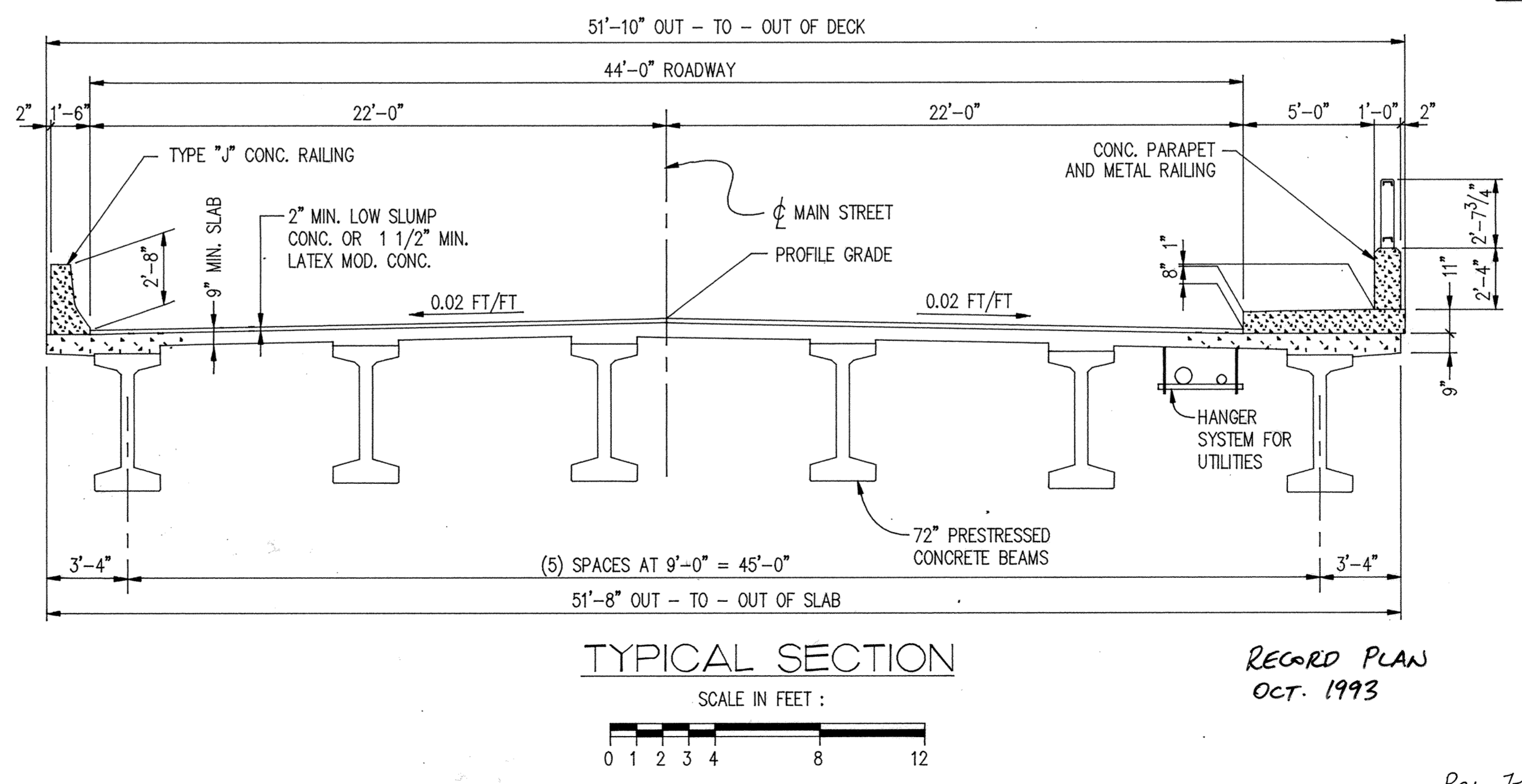


Table with 6 columns: ITEM NO., ITEM, UNIT, QUANTITY, etc. for Bridge Approach Panels.

SCHEDULE OF QUANTITIES FOR ENTIRE BRIDGE

Large table with 20 columns: ITEM NO., ITEM, UNIT, QUANTITY, etc. listing materials like concrete, steel, and riprap.

APPROVED: Terry Maun, ELK RIVER CITY ENGINEER
DATE: 3/25/92

Larson Engineering of Minnesota logo and contact information.

I HEREBY CERTIFY THAT THIS PLAN WAS PREPARED BY ME OR UNDER MY DIRECT SUPERVISION AND THAT I AM A DULY REGISTERED PROFESSIONAL ENGINEER UNDER THE LAWS OF THE STATE OF MINNESOTA.

Ronald L. Decker, DATE 3/25/92, REG. NO. 13931

MAIN STREET ELK RIVER MINNESOTA DEPARTMENT OF TRANSPORTATION

Bridge No. 71517 MAIN STREET OVER ELK RIVER 0.4 MI. EAST OF JUNCTION C. R. 30, IN ELK RIVER TWO-118'-0" PRESTRESS BEAM SPANS SPAN I.D. NO. 501

GENERAL PLAN AND ELEVATION SEC. 33 TWP 33 R 26

CITY ELK RIVER COUNTY SHERBURNE

APPROVED: Ronald L. Decker, STATE BRIDGE ENGINEER

DES. : RLD DR. : GLA CHK. : DRM CHK. : RLD 71517