

SECTION A-A

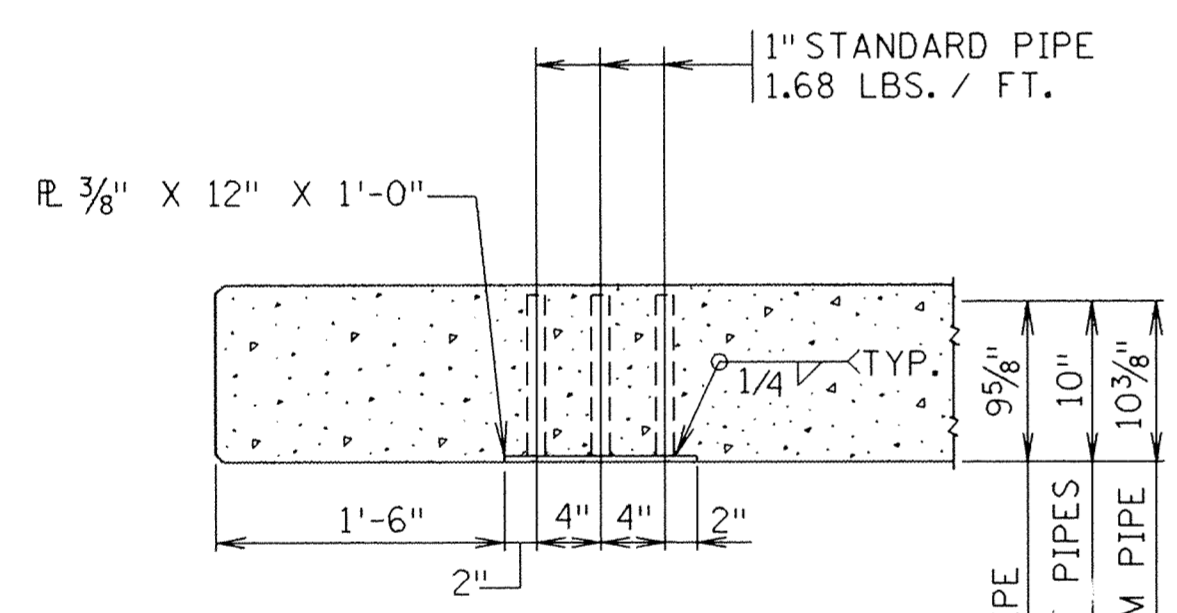
BAR	NO.	LENGTH	SHAPE	LOCATION
R501E	315	6'-7"	BENT	RAIL VERT.
R502E	265	5'-6"	BENT	RAIL VERT.
R703E	2	6'-7"	BENT	RAIL VERT.
R504E	4	5'-4"	BENT	RAIL VERT.
R505E	2	6'-2"	BENT	RAIL VERT.
R506E	2	5'-11"	BENT	RAIL VERT.
R407E	28	30'-0"	STR'T.	RAIL HORZ.
R408E	4	36'-1"	STR'T.	RAIL HORZ.
R409E	8	18'-5"	STR'T.	RAIL HORZ.
R410E	40	19'-7"	STR'T.	RAIL HORZ.
R411E	16	18'-1"	STR'T.	RAIL HORZ.

* THICKNESS TO BE THE SAME AS SLAB IN SECTION A-A

INSIDE ELEVATION OF RAILING

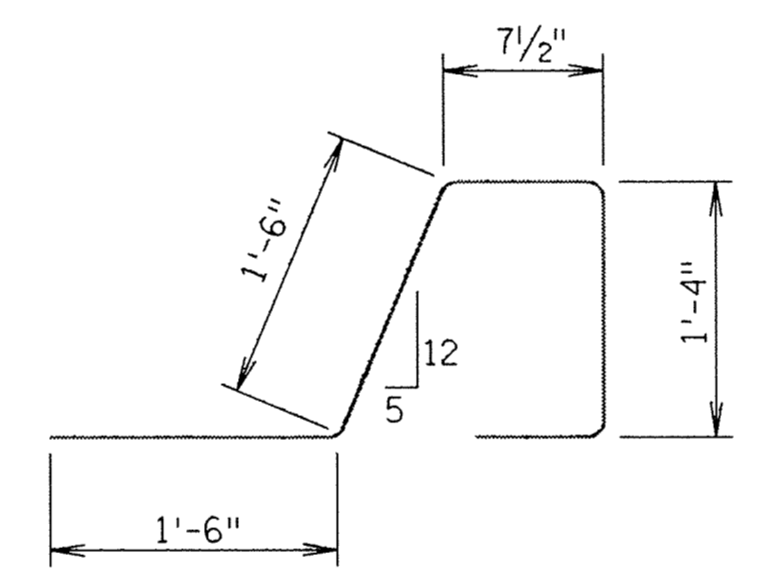
EXPANSION JOINT
EXPANSION DEVICE NOT SHOWN

DEFLECTION JOINT

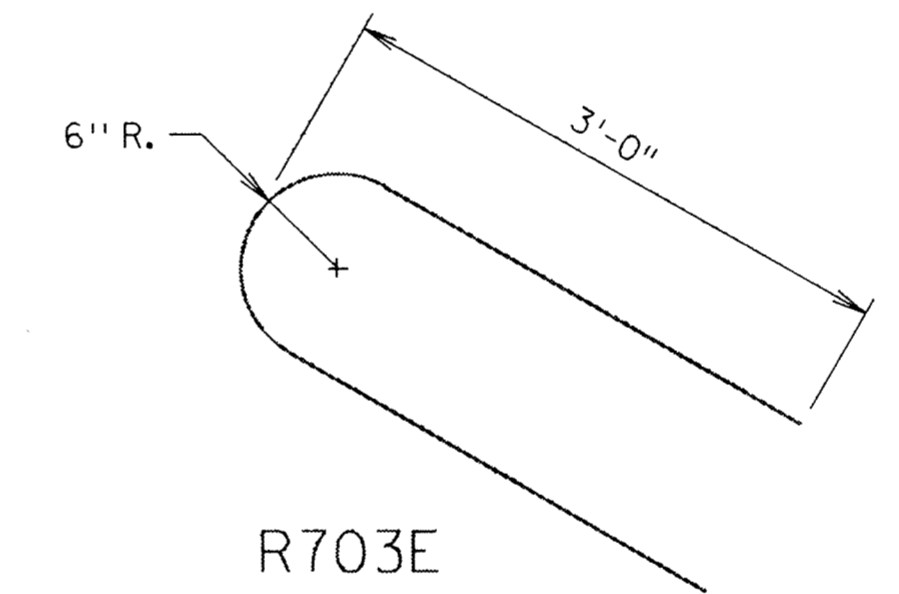


SECTION B-B
(REINFORCEMENT NOT SHOWN)

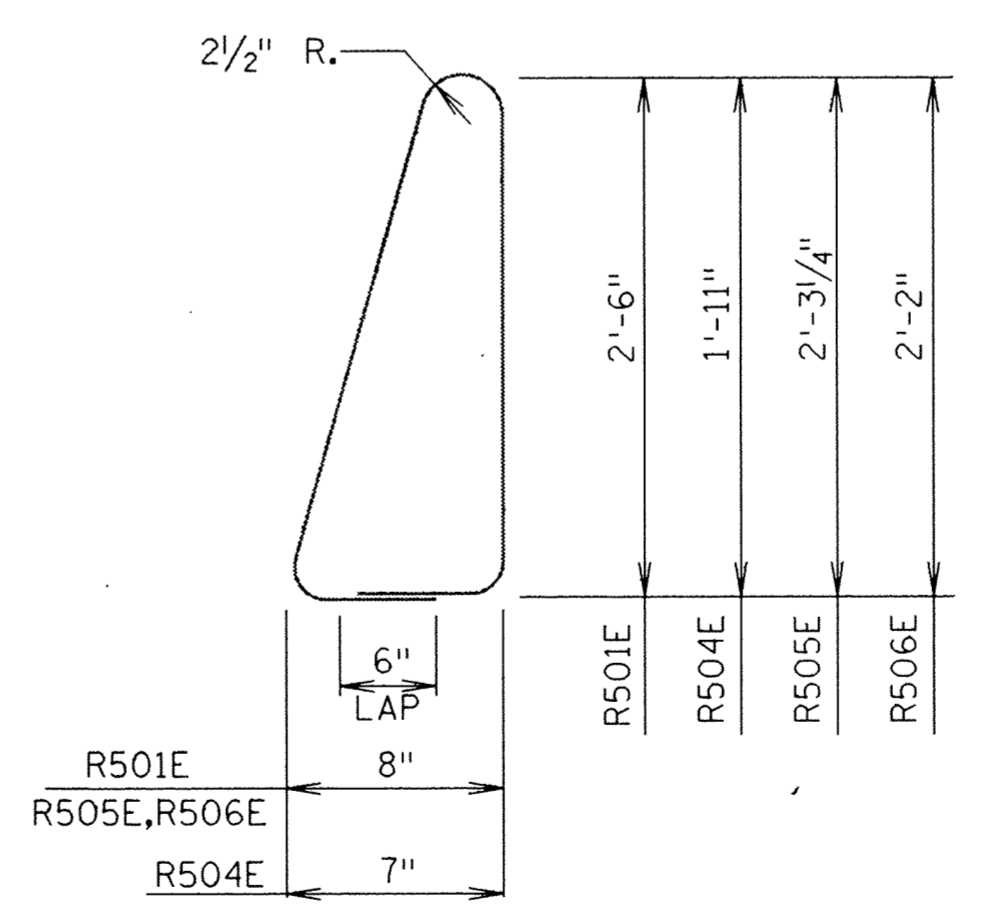
RAIL RUSTICATION



R502E



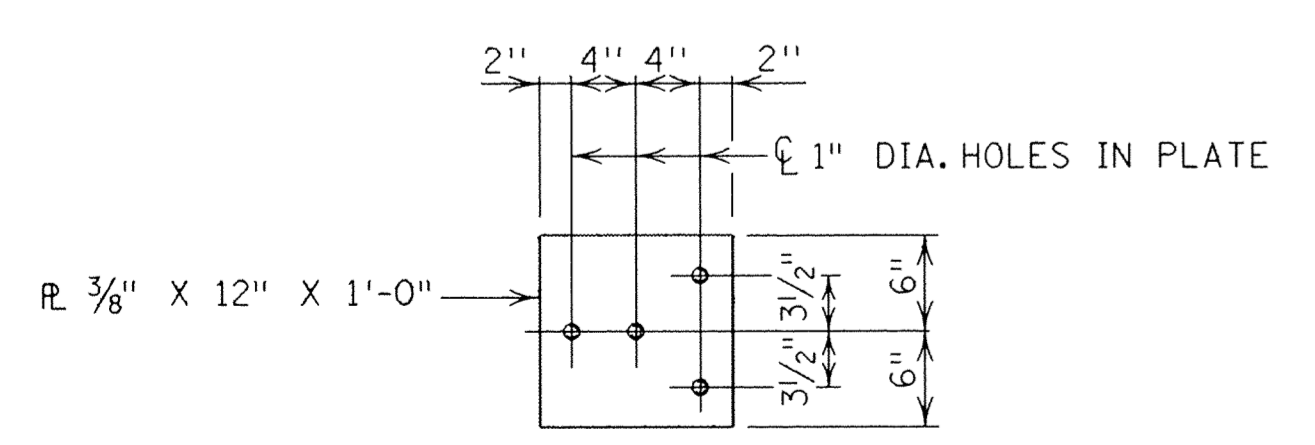
R703E



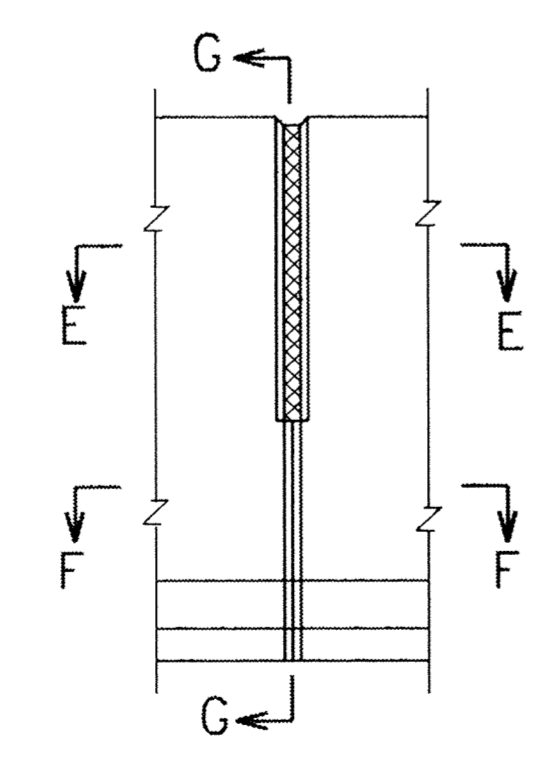
R501E, R504E, R505E & R506E

GENERAL NOTES:

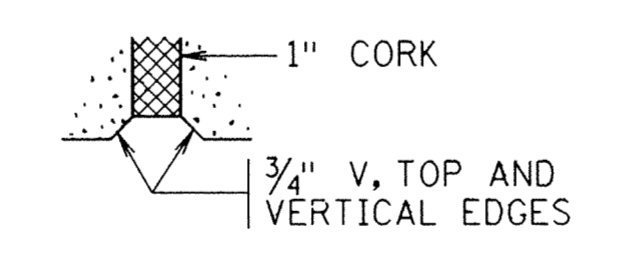
CONCRETE RAILING = 440 LBS./FT. (.109 CU. YDS./FT.)
 GUARDRAIL CONNECTION TO BE STRUCTURAL STEEL, SPEC. 3306.
 FINISH ALL EDGES OF RAIL WITH 1/2" VEE, EXCEPT WHERE OTHERWISE NOTED.
 SEE SUPERSTRUCTURE SHEET FOR JOINT SPACING.
 GUARDRAIL CONNECTION TO BE INCLUDED IN PRICE BID FOR OTHER ITEMS.
 RAIL QUANTITIES ARE INCLUDED IN SUMMARY OF QUANTITIES FOR SUPERSTRUCTURE.
 MAXIMUM SPACING OF CONCRETE DEFLECTION JOINTS SHALL BE 20'-0".
 CONCRETE IN RAILING SHALL BE MIX NO. 3Y46.
 SEE SH. 22 FOR LIGHT ANCHORAGE REINFORCING AND CONDUIT SYSTEM DETAILS.



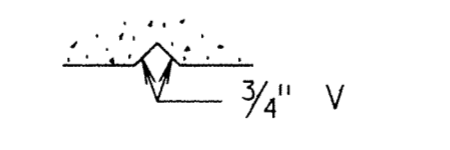
GUARDRAIL CONNECTION DETAIL
GALVANIZE AFTER FABRICATION PER SPEC. 3394
ESTIMATED WEIGHT = 20 LBS.



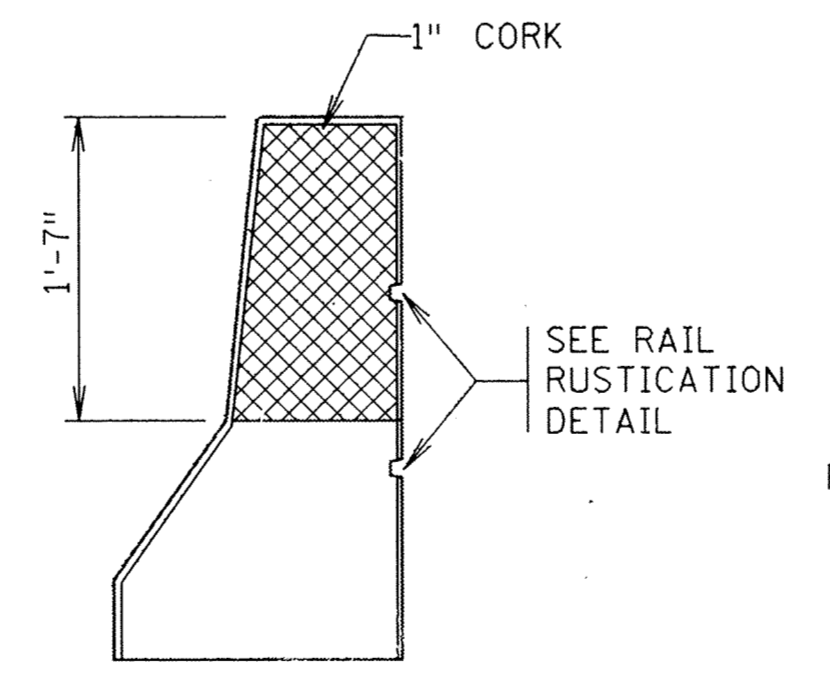
ELEVATION



SECTION E-E



SECTION F-F



SECTION G-G

DEFLECTION JOINT

RECORD PLAN OCT. 1993
"MODIFIED"

APPROVED: 8/31/91 FIG. 5-397.117

S.P. 204-113-03

TITLE: CONCRETE RAILING (TYPE J)
WITH INTEGRAL END POST

DES: MnDOT DR: MnDOT/GLA
CHK: RLD CHK: RLD
7-2-92

APPROVED: 7-2-92
Bridge No. 71517
Sheet No. 13 of 24 Sheets