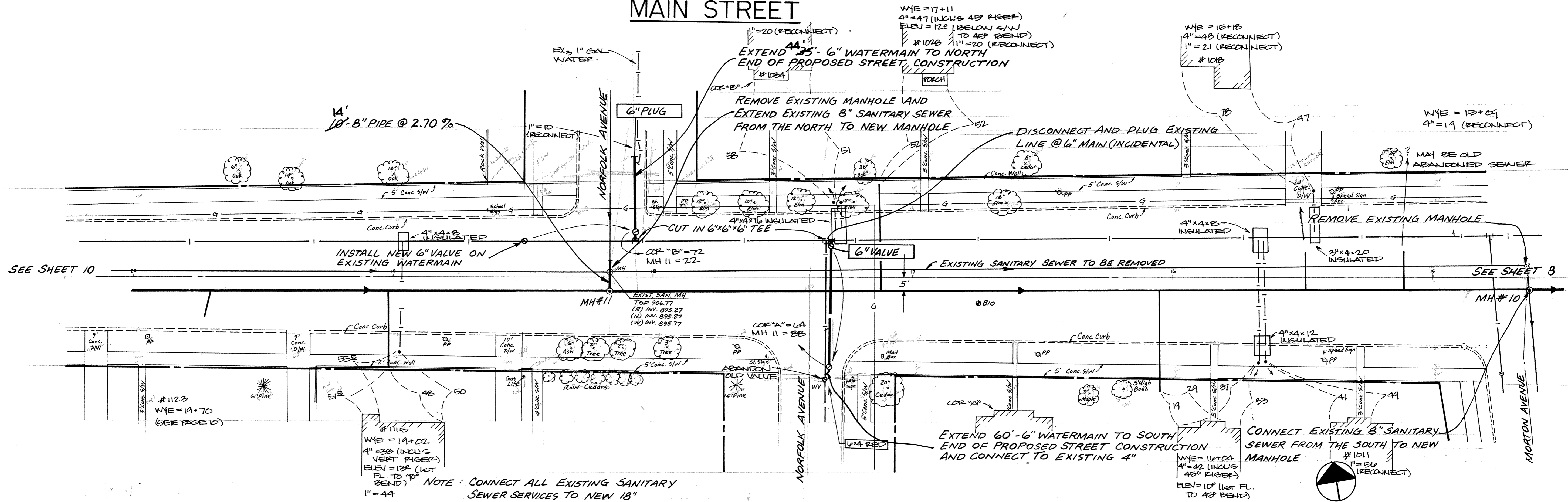
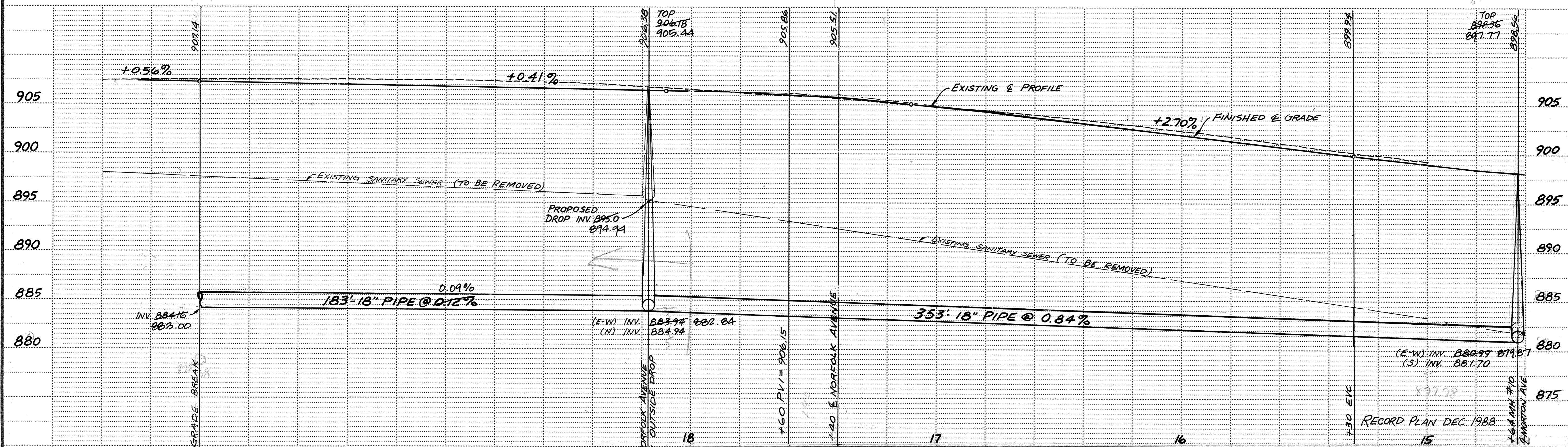


# MAIN STREET



NOTE: CONNECT ALL EXISTING SANITARY SEWER SERVICES TO NEW 18"



<b>Maier Stewart &amp; Associates Inc.</b> CONSULTING ENGINEERS 1959 SLOAN PLACE (612) 774-6021 ST. PAUL, MINNESOTA 55117		DESIGNED _____ CHECKED _____ DRAWN <u>ARJ</u> GRAPHIC SCALE HORIZ. 20' VERT. 5'	<b>CITY OF ELK RIVER</b> <b>SANITARY SEWER MAIN STREET</b> DATE <u>OCT 1987</u> SHEET <u>9</u> OF <u>42</u> SHEETS PROJECT NO. <u>230-04</u>
DATE <u>3/5/88</u> DESCRIPTION <u>Street Grades</u>	REVISIONS _____ _____ _____	RECORD PLAN DEC. 1988	266

SAATCHI PRODUCTS • NEW YORK, MINNESOTA  
 PROJECT NUMBER 230-04  
 DRAWING NUMBER  
 MAINS 87  
 DRAWING NUMBER  
 DRAWING NUMBER  
 DRAWING NUMBER