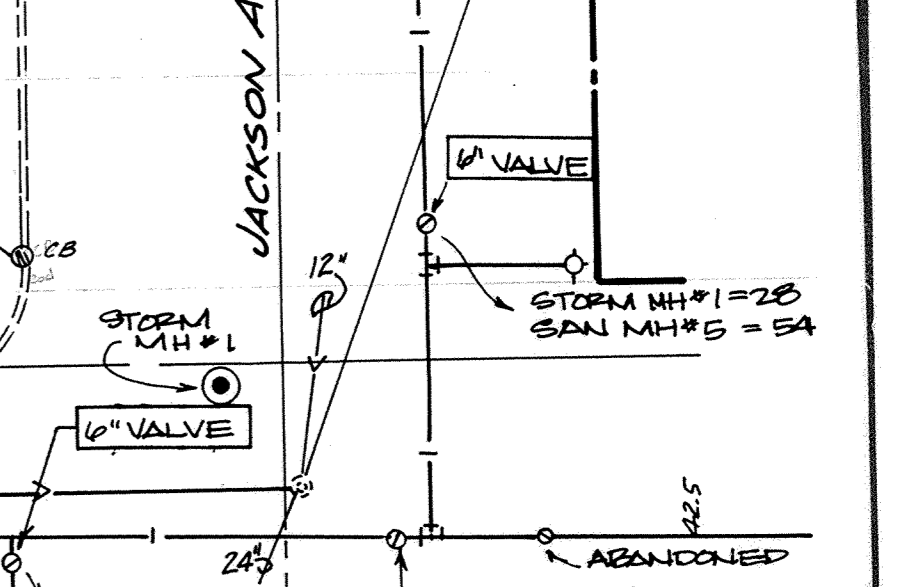
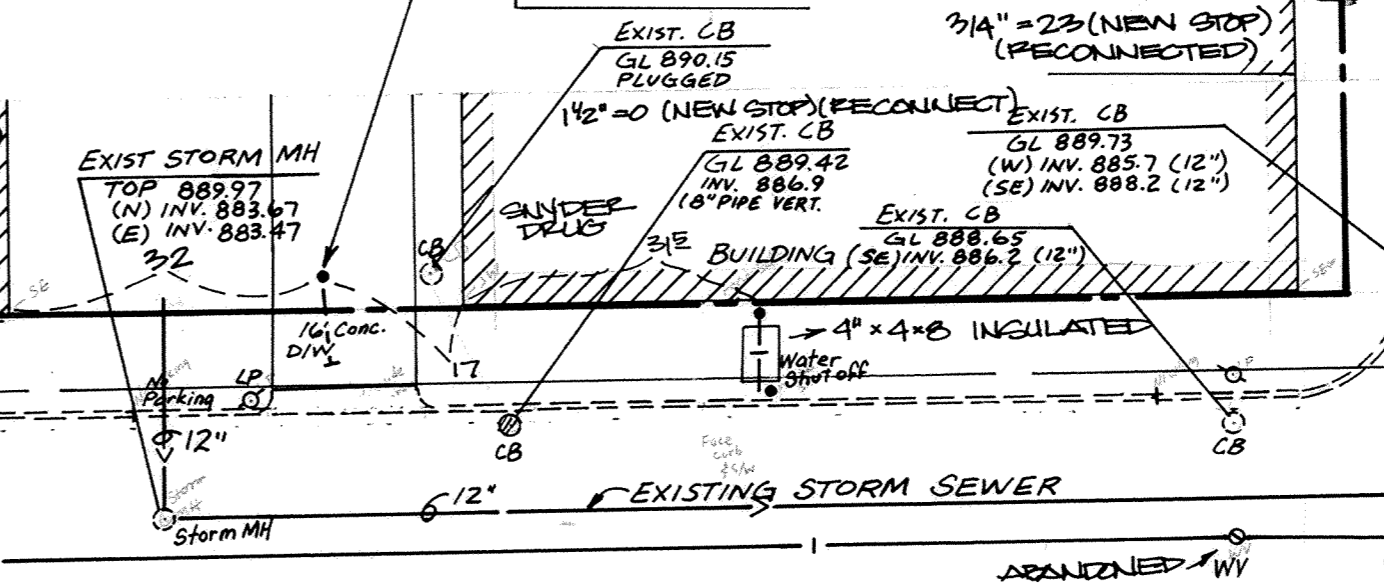
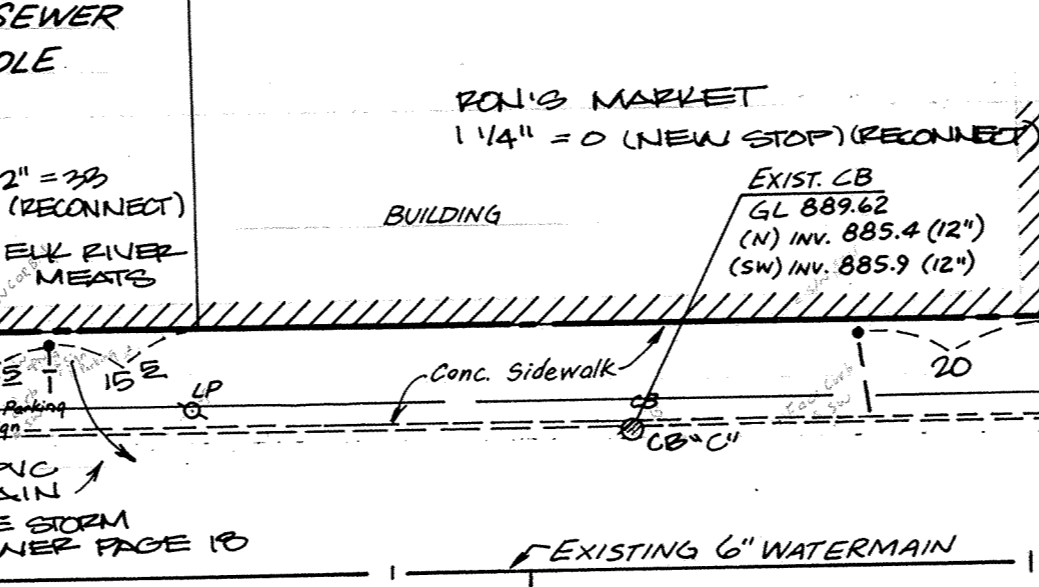
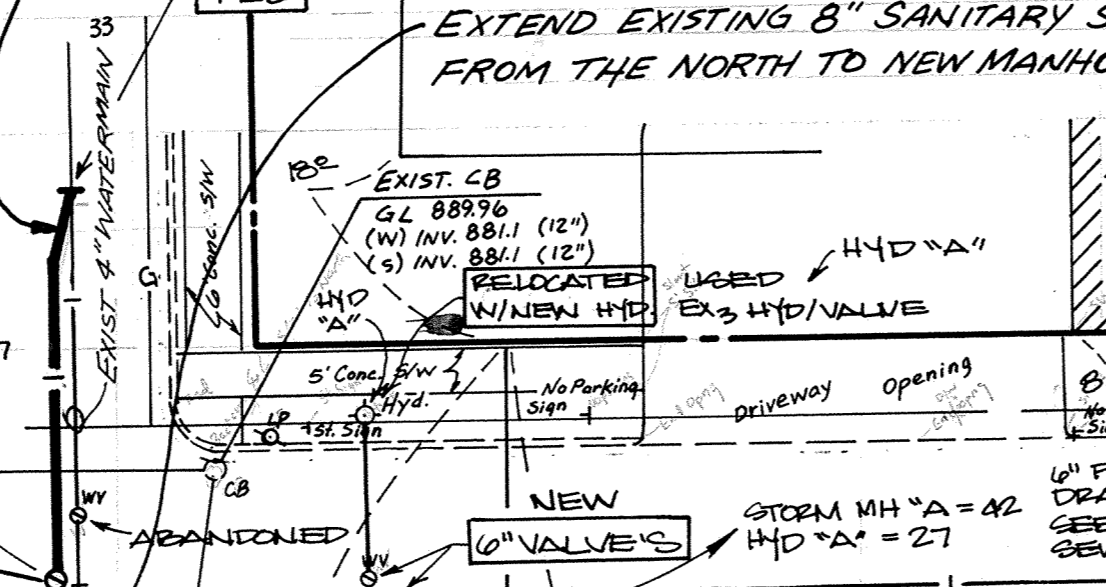
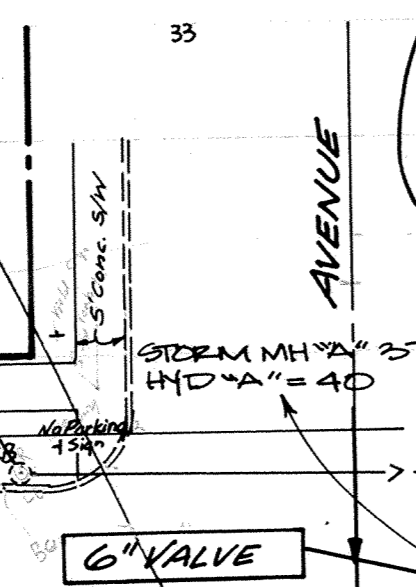
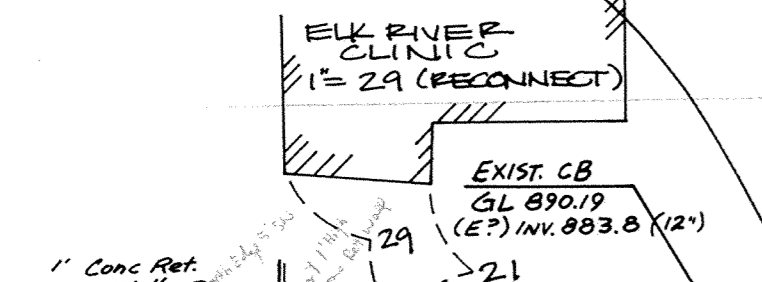


EXTEND 24" - 6" WATERMAIN TO NORTH END OF PROPOSED STREET CONSTRUCTION AND CONNECT TO EXISTING 4" DISCONNECT & PLUG EXISTING 4" LINE AT 6" LINE

MAIN STREET

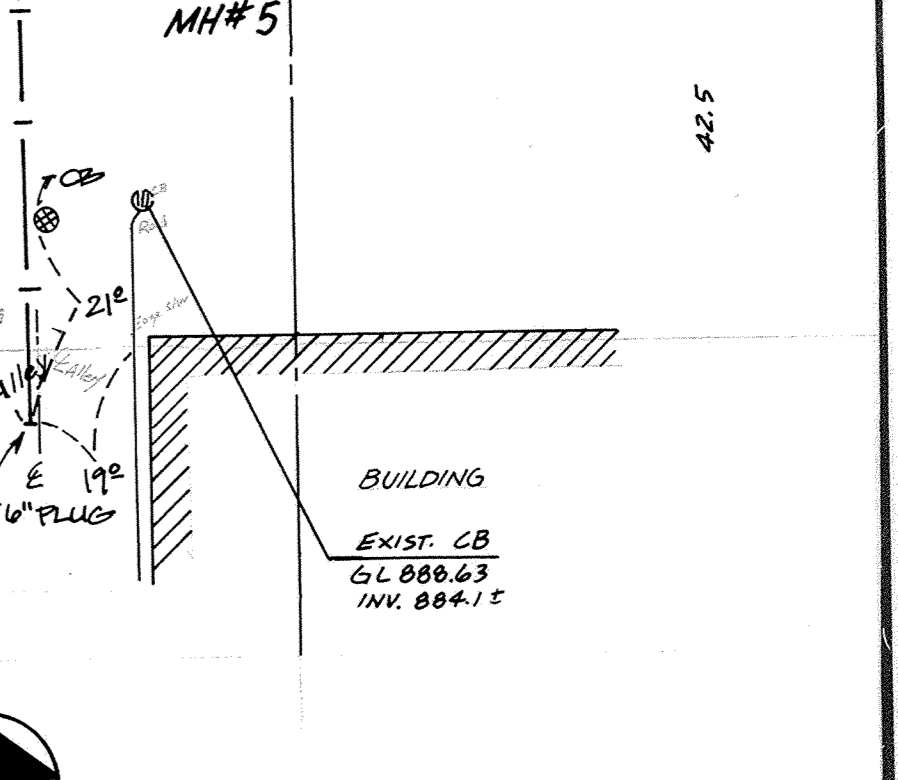
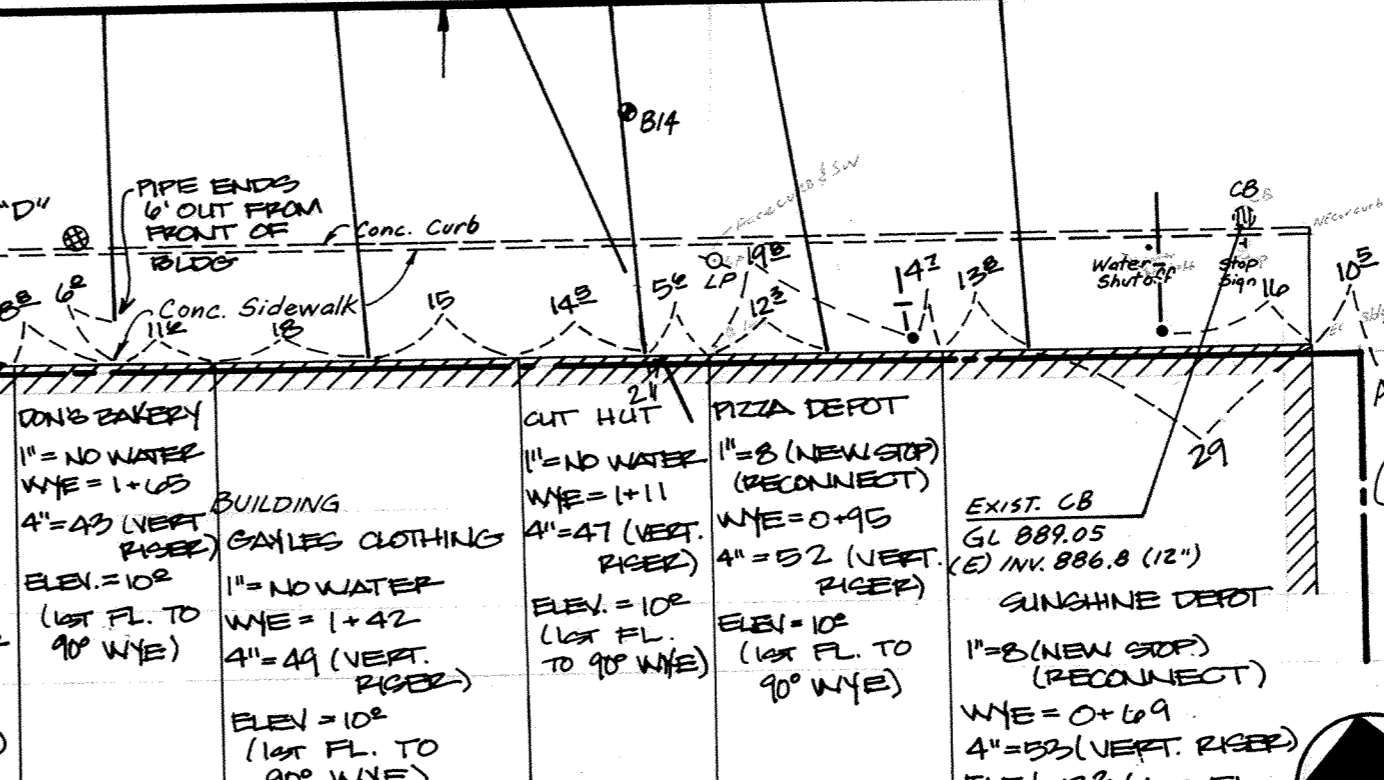
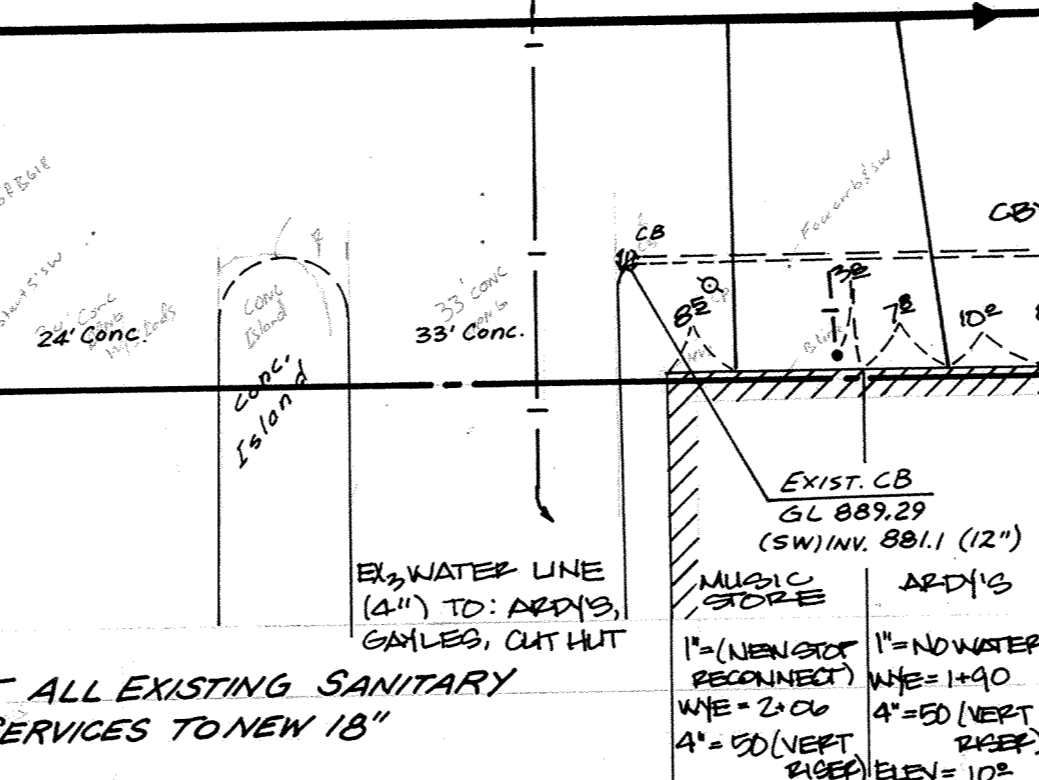
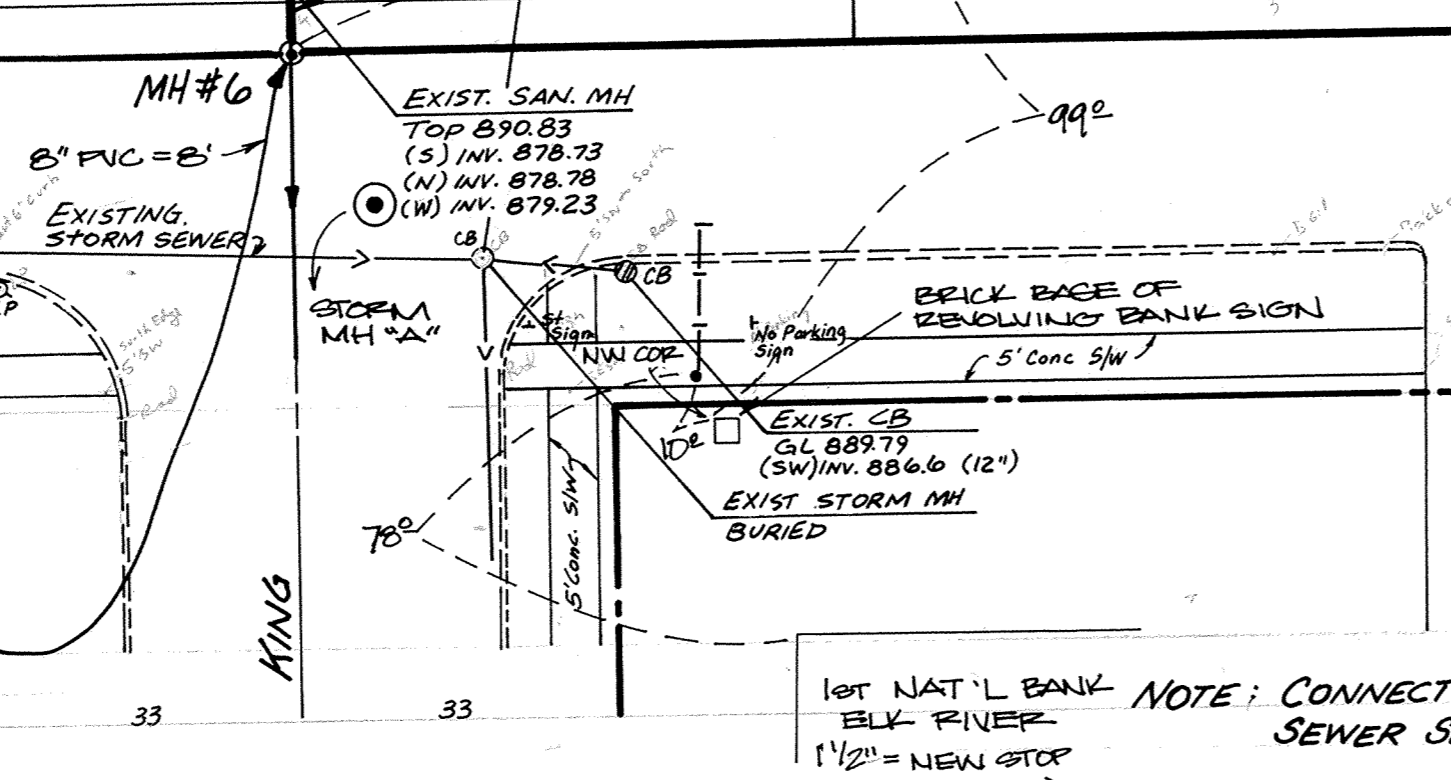
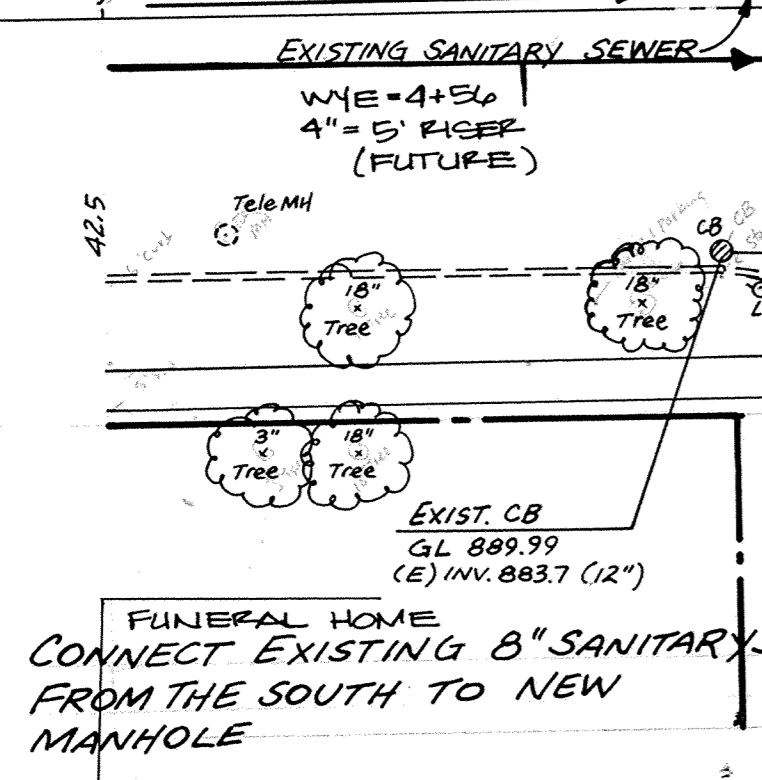
MARTY'S AUTO
WYE = 2+44
4" = U4 (INCLUDES 4" RISE)
ELEV = 102 (1ST FL. TO 45' RISE)
REMOVE EXISTING MANHOLE AND EXTEND EXISTING 8" SANITARY SEWER FROM THE NORTH TO NEW MANHOLE

10'-8" PIPE @ 0.40%



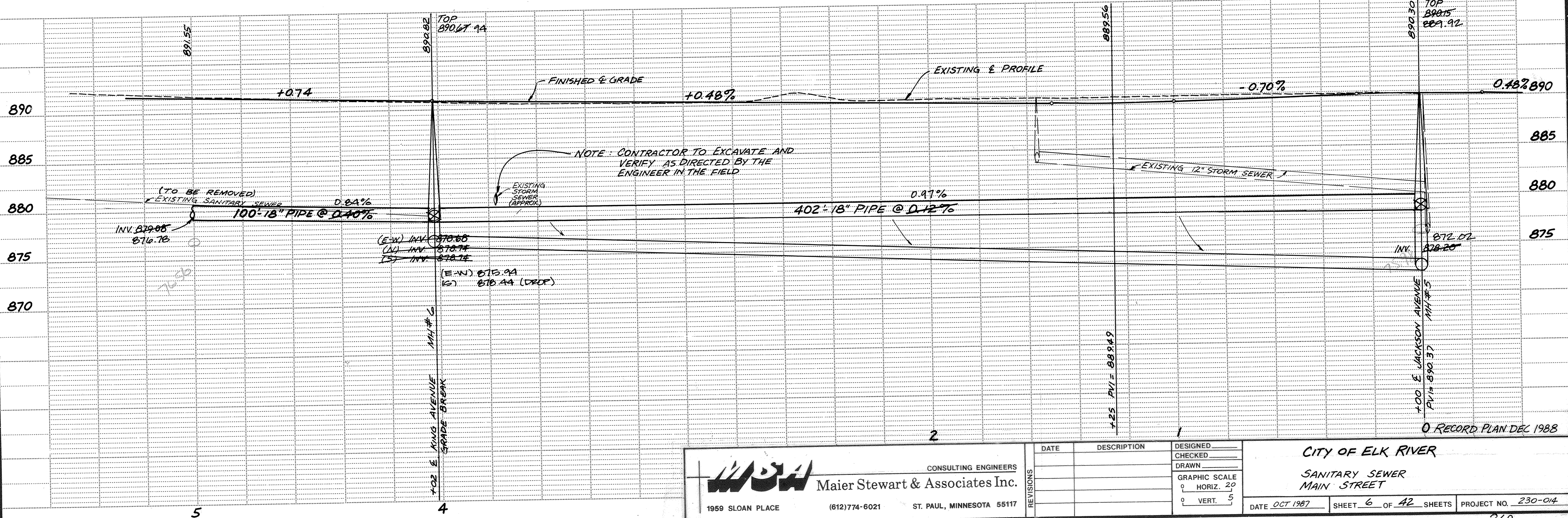
SEE SHEET 7

SEE SHEET 5



CONNECT EXISTING 8" SANITARY FROM THE SOUTH TO NEW MANHOLE

NOTE: CONNECT ALL EXISTING SANITARY SEWER SERVICES TO NEW 18"



MSA CONSULTING ENGINEERS
 Maier Stewart & Associates Inc.
 1959 SLOAN PLACE (612) 774-6021 ST. PAUL, MINNESOTA 55117

REVISIONS	DATE	DESCRIPTION	DESIGNED	CHECKED	DRAWN

CITY OF ELK RIVER
 SANITARY SEWER
 MAIN STREET

DATE OCT 1987 SHEET 6 OF 42 SHEETS PROJECT NO. 230-014

SAICO PRODUCTS • NEW HOPE, MINNESOTA
 DRAWING NUMBER MAINS 87
 6
 RECORD PLAN DEC 1988
 269