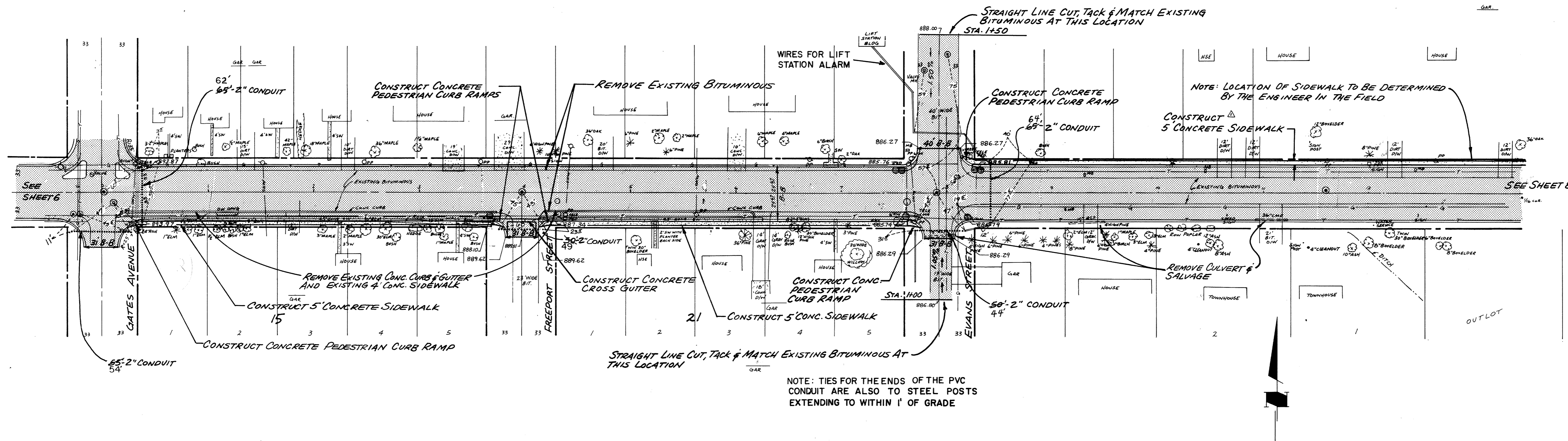
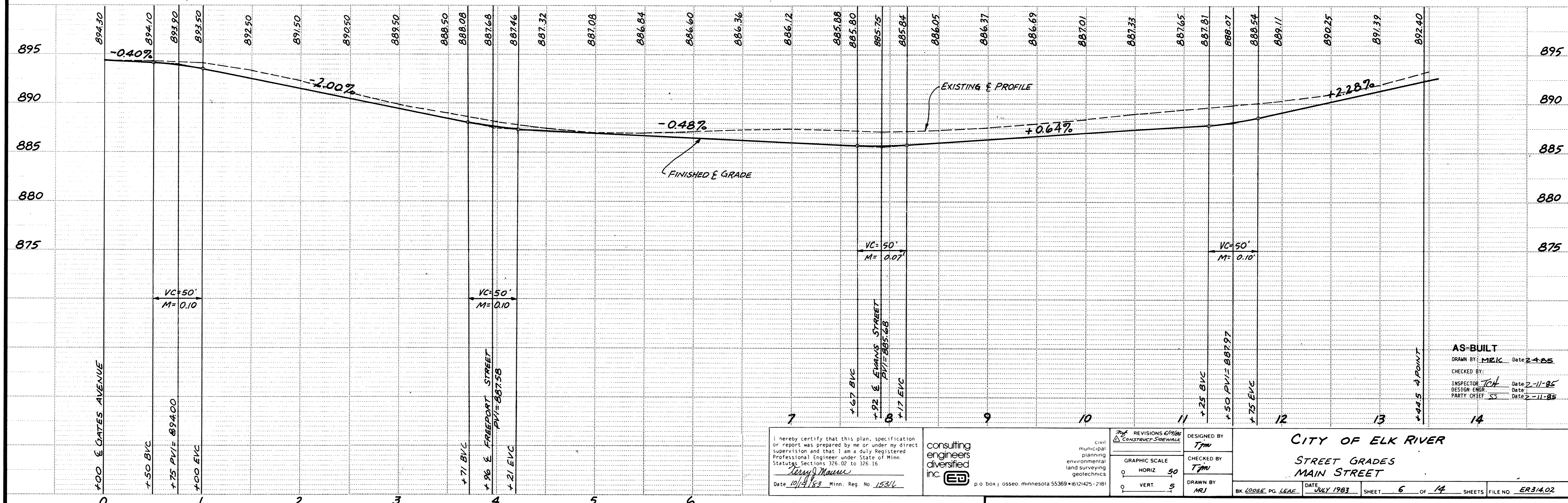


MAIN STREET



NOTE: TIES FOR THE ENDS OF THE PVC CONDUIT ARE ALSO TO STEEL POSTS EXTENDING TO WITHIN 1' OF GRADE



I hereby certify that this plan, specification or report was prepared by me or under my direct supervision and that I am a duly Registered Professional Engineer under State of Minn. Statutes Sections 326.02 to 326.16.
Kenyon Mauer
 Date 10/4/83 Minn. Reg. No. 15316

consulting engineers diversified inc.
 civil municipal planning environmental land surveying geotechnics
 p o box j osseo minnesota 55369 • 612/425-2181

DESIGNED BY *Tjm*
 CHECKED BY *Tjm*
 DRAWN BY *MLJ*

CITY OF ELK RIVER
STREET GRADES
MAIN STREET
 BK. LOOSE PG. LEAF. DATE JULY 1983 SHEET 6 OF 14 SHEETS FILE NO. ER314.02

STATE AID PROJ. NO. 204-113-01