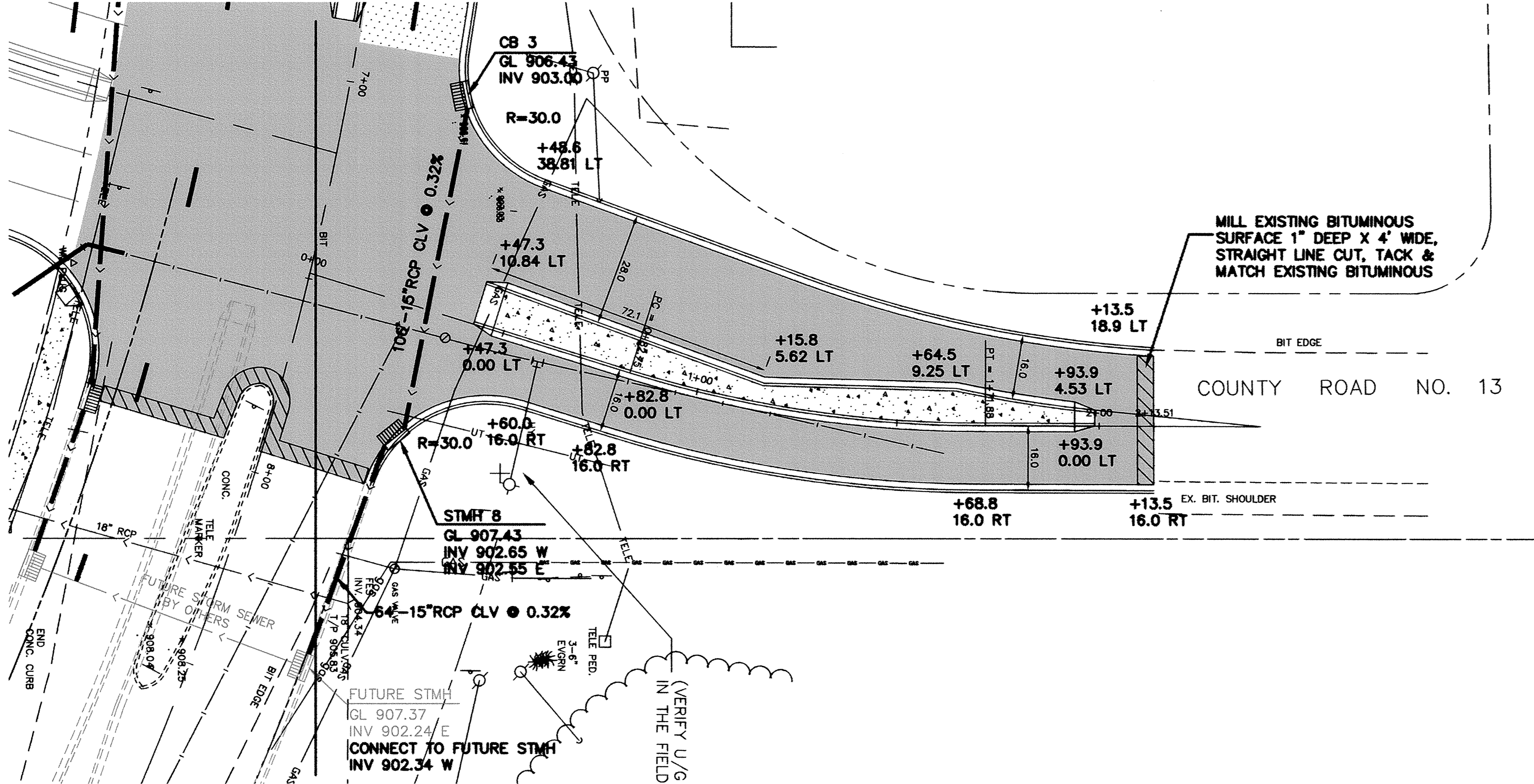


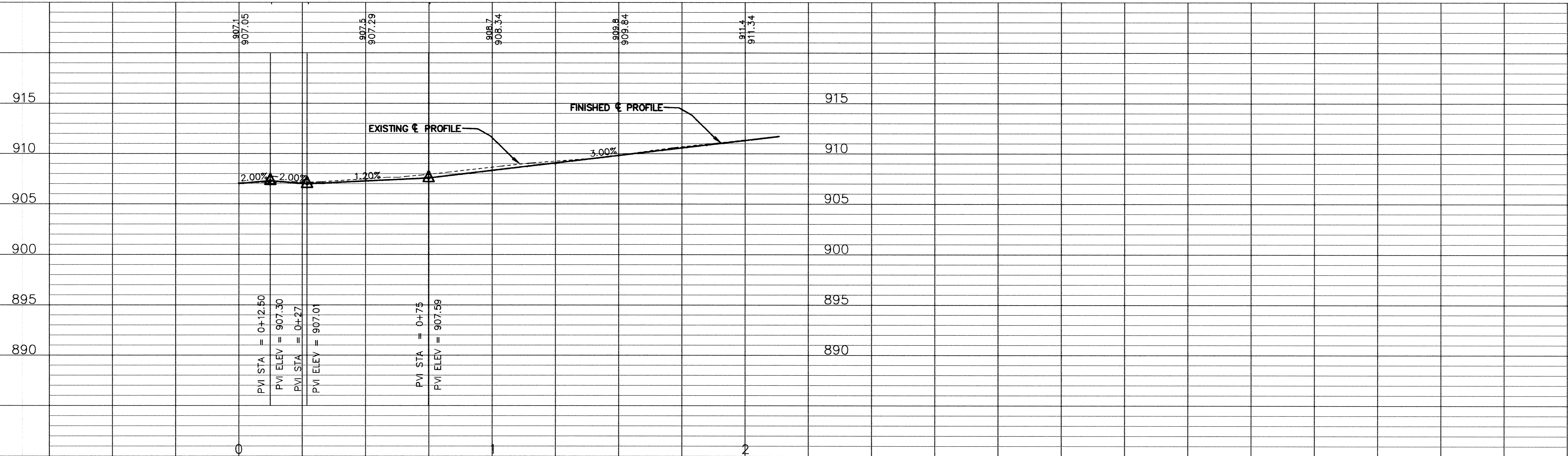
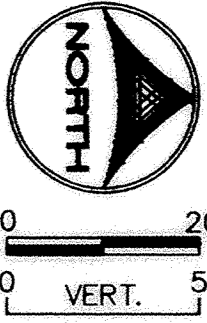
CO. ROAD NO. 13

SEE SHEET 20



MILL EXISTING BITUMINOUS SURFACE 1\" DEEP X 4\" WIDE, STRAIGHT LINE CUT, TACK & MATCH EXISTING BITUMINOUS

COUNTY ROAD NO. 13



DESIGNED BY: DESIGNED_BY DRAWN BY: EY
 APPROVED BY: APPROVED_BY JOB NUMBER 808200
 CAD DATE: June 23, 2000 2:08:31 p.m.
 CAD FILE: 808200\808200P-3.DWG

I HEREBY CERTIFY THAT THIS PLAN, SPECIFICATION, OR REPORT WAS PREPARED BY ME OR UNDER MY DIRECT SUPERVISION AND THAT I AM A DULY REGISTERED PROFESSIONAL ENGINEER UNDER THE LAWS OF THE STATE OF MINNESOTA.
 DATE _____ REG. NO. _____

NO.	DATE	BY	REVISION DESCRIPTION

Howard R. Green Company
 CONSULTING ENGINEERS

1326 ENERGY PARK DRIVE
 ST. PAUL, MINNESOTA 55108
 (651) 644-4389

CITY OF ELK RIVER
 EASTERN AREA PHASE III
 STREET AND UTILITY IMPROVEMENTS

PLAN AND PROFILE
 COUNTY ROAD NO. 13
 S.A.P. 204-113-09 0+00 TO 2+15

SHEET NO.
21
 OF
46

DRAWING NUMBER

DRAWING NUMBER

DRAWING NUMBER

DRAWING NUMBER
 MAINS.00
 10