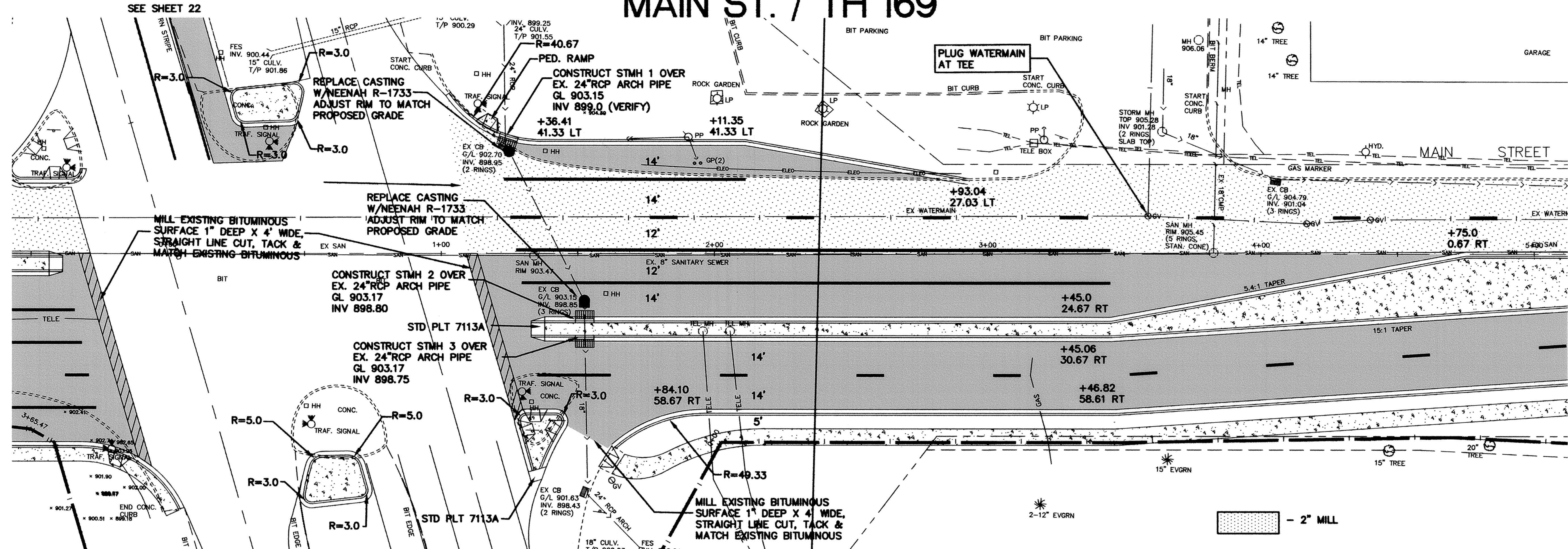
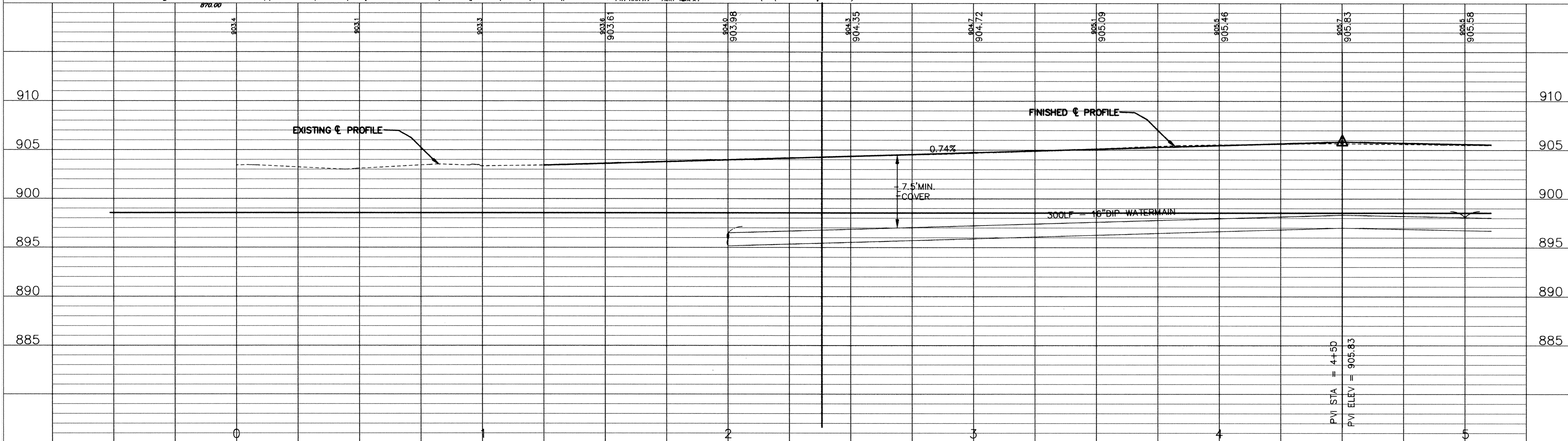
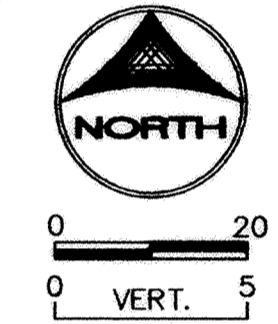


# MAIN ST. / TH 169



SEE SHEET 17, 17A


SEE SHEET 20



DESIGNED BY: DESIGNED\_BY DRAWN BY: EY  
 APPROVED BY: APPROVED\_BY JOB NUMBER 808200  
 CAD DATE: June 15, 2000 6:46:04 a.m.  
 CAD FILE: 808200\808200P-1.DWG

I HEREBY CERTIFY THAT THIS PLAN, SPECIFICATION, OR REPORT WAS PREPARED BY ME OR UNDER MY DIRECT SUPERVISION AND THAT I AM A DULY REGISTERED PROFESSIONAL ENGINEER UNDER THE LAWS OF THE STATE OF MINNESOTA.  
 DATE \_\_\_\_\_ REG. NO. \_\_\_\_\_

NO.	DATE	BY	REVISION DESCRIPTION


**Howard R. Green Company**  
 CONSULTING ENGINEERS  
 1326 ENERGY PARK DRIVE  
 ST. PAUL, MINNESOTA 55108  
 (651) 644-4389

**CITY OF ELK RIVER**  
**EASTERN AREA PHASE III**  
**STREET AND UTILITY IMPROVEMENTS**

**PLAN AND PROFILE**  
**MAIN ST. / TH 169**  
 S.A.P. 204-113-09 0+00 TO 5+00

SHEET NO.  
**19**  
 OF  
**46**

S:\CADD\PROJECTS\808200\808200P-1.DWG  
 PROJECT: 808200 - EASTERN AREA PHASE III  
 DRAWING: 808200P-1.DWG  
 DATE: 6/15/2000 6:46:04 AM  
 DRAWN BY: EY  
 CHECKED BY: [blank]  
 APPROVED BY: [blank]  
 JOB NUMBER: 808200