

PLAN SYMBOLS	
SECTION LINE	----
QUARTER LINE	- - - -
SIXTEENTH LINE	- . - . - .
RIGHT OF WAY	=====
LOT LINE	=====
CENTER LINE	- - - -
FENCE LINE	- x - x -
RIVER OR CREEK	~~~~~
LAKE OR POND	~~~~~
CULVERT	=====
BRIDGE	=====
RETAINING WALL	=====
UTILITIES SYMBOLS	
SANITARY SEWER	-----○-----
STORM SEWER	-----●-----
WATERMAIN	----- -----
GAS LINE	-----C-----
POWER LINE	-----□-----
MANHOLE	○
CATCH BASIN	⊗
VALVE	⊙
TREES	⊗
BRUSH OR SHRUBS	⊗
HEDGE	⊗⊗⊗⊗
CONIFERS	⊗
SWAMP	⊗
MAILBOX	⊗
SIGN	⊗
HYDRANT	⊗
WATER SERVICE	⊗
POWER OR TELEPHONE POLE	⊗
LIGHT POLE	⊗
ANCHOR	⊗
SOIL BORING	⊗

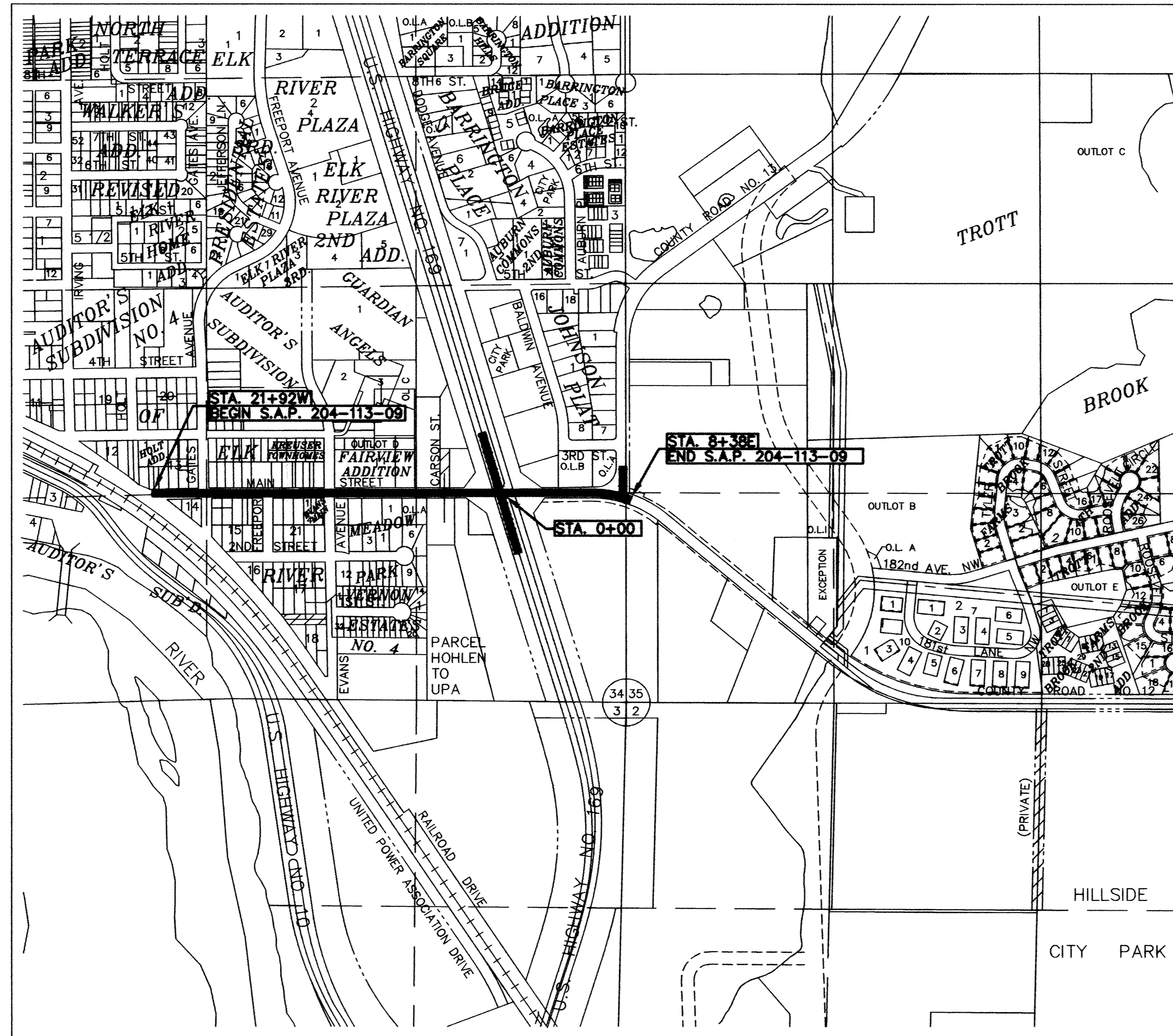
**MINNESOTA DEPARTMENT OF TRANSPORTATION**  
**CITY OF ELK RIVER**  
**SECTION 31, T33N R26W**  
**CONSTRUCTION PLAN FOR GRADING, AGGREGATE BASE, BITUMINOUS,**  
**CONCRETE CURB AND GUTTER, STORM SEWER,**  
**SIGNAL AND STREET LIGHTING**  
**MAIN STREET AND STATE TRUNK HIGHWAY NO. 169**

Pursuant to the requirements of M.S. 216D.04, the state one-call notification center was contacted on \_\_\_\_\_, 1999 (Ticket No. \_\_\_\_\_), and these plans include the type, size and general location of underground facilities as reported by the affected operators of those facilities as of the date of completion of these final drawings. This information may not be relied on as warranting the actual presence, characteristics, or location of the underground facilities, and does not relieve any person from complying with state notification and location requirements prior to excavation.

S.A.P. 204-113-09

BETWEEN RAILROAD DRIVE AND CSAH 13

GROSS LENGTH	3030.00	FEET	0.5739	MILES
BRIDGE LENGTH	0	FEET	0	MILES
EXCEPTION LENGTH	0	FEET	0	MILES
NET LENGTH	3030.00	FEET	0.5739	MILES



**INDEX OF SHEETS**

1	TITLE SHEET WITH VICINITY MAP
2	LOCATION MAP
3-4	ESTIMATED QUANTITIES, TABLES
5	TYPICAL STREET SECTIONS
6-9	DETAIL SHEETS
10-12A	DETOUR PLAN
13-14	REMOVAL PLAN
15-23	PLAN AND PROFILE SHEETS
24-37	CROSS SECTIONS
38-39	SIGNING & STRIPING
40-46	TRAFFIC SIGNAL PLANS

TOTAL NUMBER OF PLAN SHEETS - 51

S.A.P. 204-113-09  
 PRESENT ADT (2000) 7860 PROJ. ADT (2020) 11,790  
 FUNCTIONAL CLASSIFICATION MAJOR COLLECTOR

NO. OF TRAFFIC LANES 2 SHOULDER WIDTH       
 PAVEMENT DESIGN: 9 ton  
 SOIL FACTOR 50 PROJ. HCDT (2019) 600-1100  
 OR  
 R-VALUE N/A ESAL FACTOR N/A  
 DESIGN SPEED 40 MPH  
 DESIGN SPEED NOT ACHIEVED AT:  
 STA. N/A TO STA. N/A (MPH     )  
 STOPPING SIGHT DISTANCE BASED ON:  
 3.5' HEIGHT OF EYE  
 0.5' HEIGHT OF OBJECT


I HEREBY CERTIFY THAT PLAN, SPECIFICATION, OR REPORT WAS PREPARED BY ME OR UNDER MY DIRECT SUPERVISION AND THAT I AM DULY REGISTERED PROFESSIONAL ENGINEER UNDER THE LAWS OF THE STATE OF MINNESOTA.

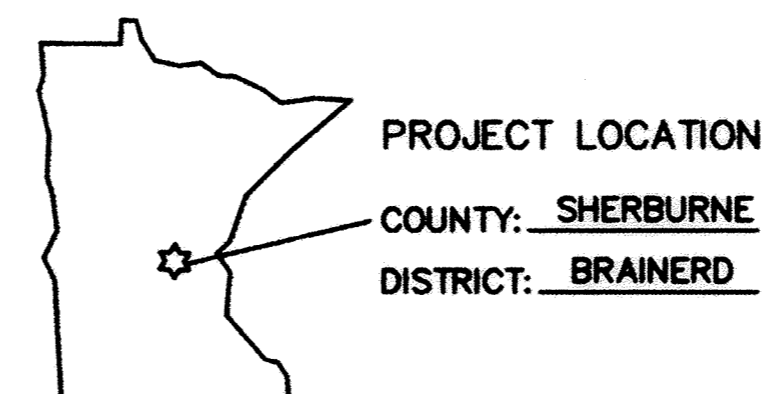
DATE \_\_\_\_\_ REG. NO. \_\_\_\_\_  
 APPROVED \_\_\_\_\_ DATE \_\_\_\_\_  
 CITY OF ELK RIVER ENGINEER

I HEREBY CERTIFY THAT THE FINAL FIELD REVISIONS, IF ANY, OF THIS PLAN WERE MADE BY ME OR UNDER MY DIRECT SUPERVISION AND THAT I AM A DULY REGISTERED PROFESSIONAL ENGINEER UNDER THE LAWS OF THE STATE OF MINNESOTA.

DATE \_\_\_\_\_ REG. NO. \_\_\_\_\_




 1326 ENERGY PARK DRIVE  
 ST. PAUL, MINNESOTA 55108  
 (612) 644-4389  
**Howard R. Green Company**  
 CONSULTING ENGINEERS



**SHEET 1 OF 46 SHEETS**

S.A.P. 204-113-09

DRAWING NUMBER  
 169 - 2000  
 Main Street/US Highway  
 DRAWING NUMBER  
 MAINS.00  
 DRAWING NUMBER  
 1