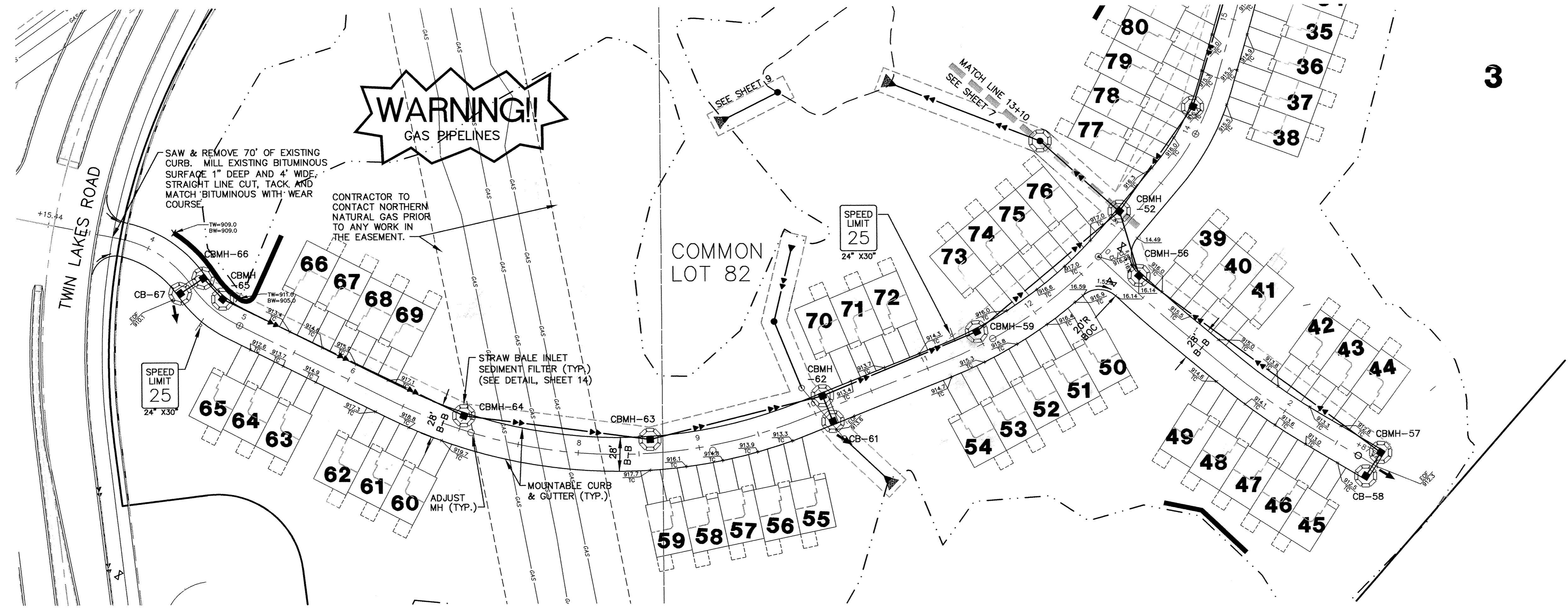
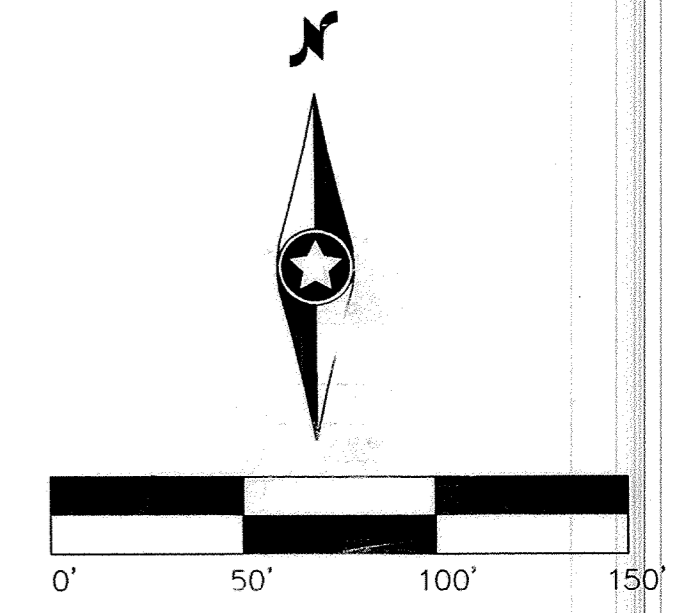


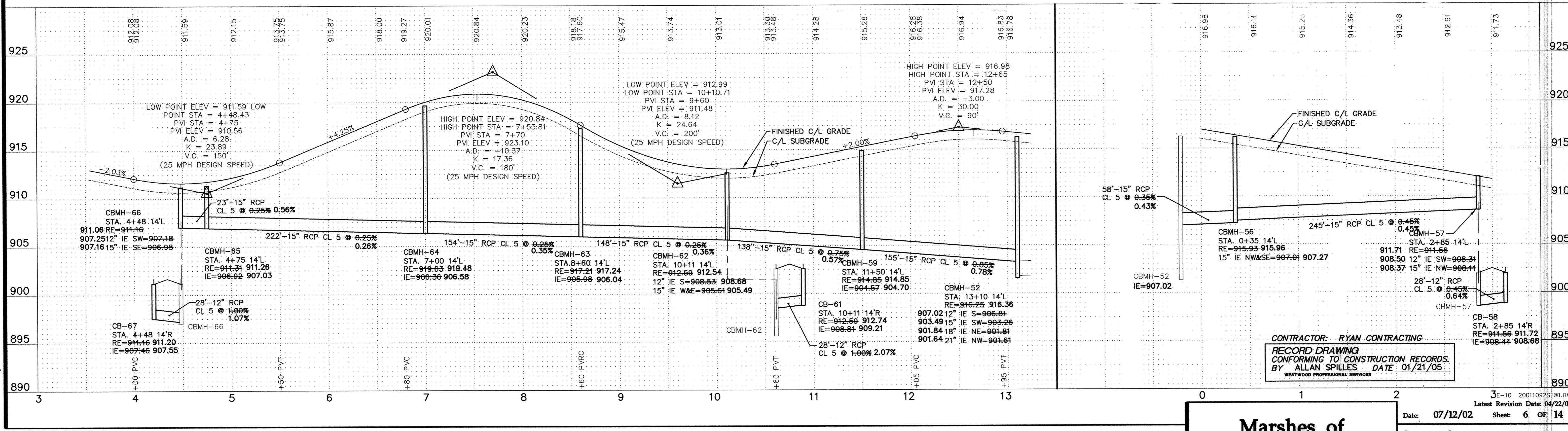
Call 48 Hours before digging:
GOPHER STATE ONE CALL
Twin City Area 651-454-0002
Mn. Toll Free 1-800-252-1166

- GENERAL NOTES:**
- RADIUS TO BE TYPE B618 CURB AND GUTTER WITH 5 FOOT TRANSITION FROM SURMOUNTABLE CURB PER CITY OF ELK RIVER STANDARDS.
 - TYPE B618 CURB & GUTTER SHALL BE CONSTRUCTED AT ALL INTERSECTIONS AND CATCH BASINS.
- 28.09 = 928.09
- RADIUS TO BE B618 C. & G. AS PER ELK RIVER DETAIL 2000 (TYP.)
- STEEL ADJUSTING RINGS SHOULD BE USED FOR MANHOLE ADJUSTMENTS PRIOR TO WEAR COURSE PLACEMENT AND SHOULD BE TYPE R-1979.
- DN * DENOTES GUTTER LINE ELEVATION AT INTERSECTIONS
- CASTING NOTE:**
- ALL CATCH BASIN CASTINGS IN CURB SHALL BE SUMPED 0.10 FEET AND MANHOLE CASTINGS IN PAVED AREAS SHALL BE SUMPED 0.05 FEET. RIM ELEVATIONS ON PLAN PROFILES REFLECT THE SUMPED ELEVATIONS.



185TH AVENUE (Sta. 3+15.44 to Sta. 13+10)

185TH CIRCLE



CONTRACTOR: **RYAN CONTRACTING**
RECORD DRAWING
CONFORMING TO CONSTRUCTION RECORDS.
BY **ALLAN SPILLES** DATE 01/21/05
WESTWOOD PROFESSIONAL SERVICES

Westwood Professional Services, Inc.
7599 Anagram Drive
Eden Prairie, MN 55344
Phone: 952/937-5150 Fax: 952/937-5822

I hereby certify that this plan was prepared by me or under my direct supervision and that I am a duly licensed PROFESSIONAL ENGINEER under the laws of the State of Minnesota.

Francis D. Hagen, II
Date: 01/21/05 License No. 17716

Revisions:
08/05/02 City Review (CL)
08/19/02 City Review (JPB)
04/22/03 185th Avenue Over Gas Lines (CLD)
01/21/05 RECORD DRAWING (AS/OGB)

Designed: FDH, II
Checked: JMM
Drawn: WH
Record Drawing by/date: AS 1/21/05

Prepared for:

D.R. Horton, Inc.
20860 Kenbridge Court
Lakeville, Minnesota 55044

**Marshes of
Trott Brook Farms**
Elk River, Minnesota

**Storm Sewer
and Street
Construction Plans**
185th Avenue (Sta. 3+15.44 to Sta. 13+10) &
185th Circle
Date: 07/12/02 Sheet: 6 OF 14
Latest Revision Date: 04/22/03

PA:200110925.dwg RECORD.DWG 01/18/2005 03:00:51 PM CST

SAFCO PRODUCTS NEW HOPE, MINNESOTA
RESPECTED BY PART NUMBER 8855
DRAWING NUMBER
DRAWING NUMBER
DRAWING NUMBER
DRAWING NUMBER
DRAWING NUMBER

SAFCO PRODUCTS NEW HOPE, MINNESOTA
RESPECTED BY PART NUMBER 8855
DRAWING NUMBER
DRAWING NUMBER
DRAWING NUMBER
DRAWING NUMBER
DRAWING NUMBER