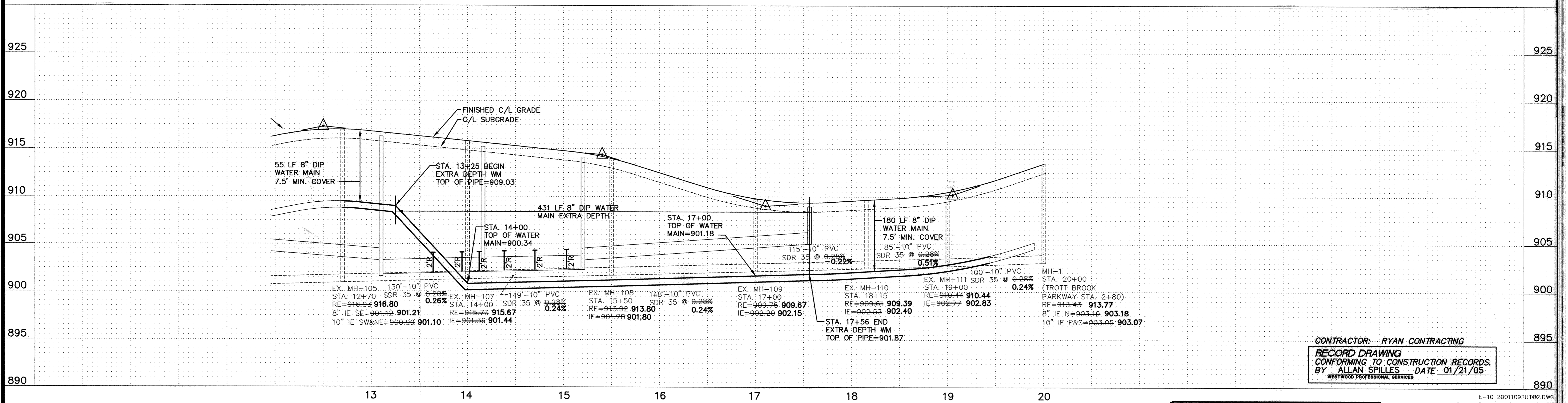
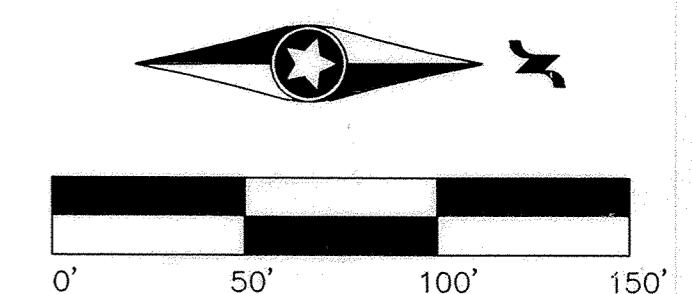


### ULYSSES STREET (STA. 12+70 TO STA. 20+00)

- GENERAL NOTES:**
- XXX.X DENOTES SANITARY SEWER SERVICE INVERT @ END OF FUTURE SERVICE STUB
  - WYE=X+XX DENOTES SANITARY SEWER SERVICE WYE LOCATED ON MAINLINE FROM DOWN STREAM M.H.
  - FLAG HYDRANTS.
  - HYDRANTS TO BE PLACED 5' BEHIND BACK OF CURB.
  - EXTEND RODS ON DEEP VALVES.
  - ALL DROP MANHOLES WITH DROPS OVER 2' TO CONSTRUCTED USING OUTSIDE DROPS.
  - SANITARY SEWER & WATER SERVICES TO BE EXTENDED 10' PAST BOC ON ALL LOTS
  - ① DENOTES FUTURE 4" SANITARY SEWER SERVICE FOR THIS UNIT TO BE INSTALLED OVER FUTURE STORM SEWER.



CONTRACTOR: RYAN CONTRACTING  
 RECORD DRAWING  
 CONFORMING TO CONSTRUCTION RECORDS.  
 BY ALLAN SPILLES DATE 01/21/05  
 WESTWOOD PROFESSIONAL SERVICES

**Westwood Professional Services, Inc.**  
 7599 Anagram Drive  
 Eden Prairie, MN 55344  
 Phone: 952/937-5150 Fax: 952/937-5822

I hereby certify that this plan was prepared by me or under my direct supervision and that I am a duly licensed PROFESSIONAL ENGINEER under the laws of the State of Minnesota.  
 Francis D. Hagen, II  
 Date: 01/21/05 License No. 17716

**Revisions:**  
 08/05/02 City Review (SLJ)  
 02/19/03 City Review (JPS)  
 04/22/03 185th Avenue Over Gas Lines (LJ)  
 01/21/05 RECORD DRAWING (AS/GKB)

Designed: FDH II  
 Checked: JMM  
 Drawn: WH  
 Record Drawing by/date: AS 1/21/05

Prepared for:

**D.R. Horton, Inc.**  
 20860 Kenbridge Court  
 Lakeville, Minnesota 55044

**Marshes of  
Trott Brook Farms**  
 Elk River, Minnesota

E-10 20011092UT@2.DWG  
 Latest Revision Date: 04/22/03  
 Date: 07/12/02 Sheet: 4 OF 14  
**Sanitary Sewer and  
Water Main  
Construction Plans**  
 Ulysses Street (Sta. 12+70 to Sta. 20+00)

DRAWING NUMBER  
 23 PRODUCTS • NEW HOPE, MINNESOTA  
 REVISION BY PART NUMBER 6532  
 SARGO PRODUCTS • NEW HOPE, MINNESOTA  
 REVISION BY PART NUMBER 6532  
 DRAWING NUMBER  
 4  
 MTR071.02  
 SARGO PRODUCTS • NEW HOPE, MINNESOTA  
 REVISION BY PART NUMBER 6532  
 DRAWING NUMBER  
 4