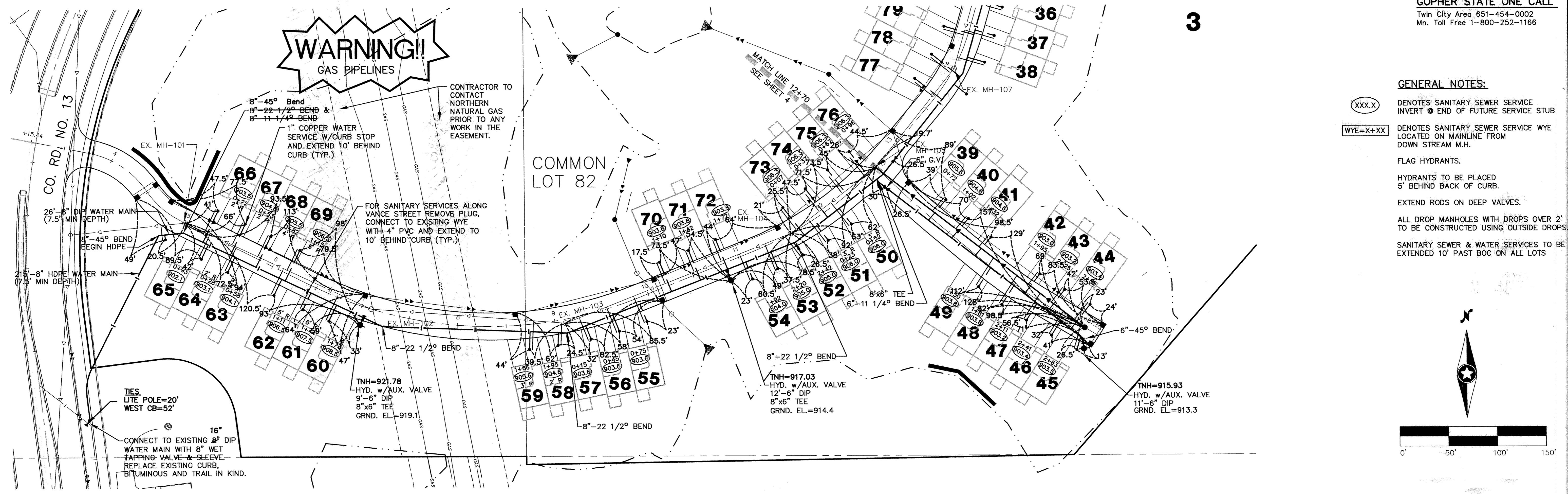


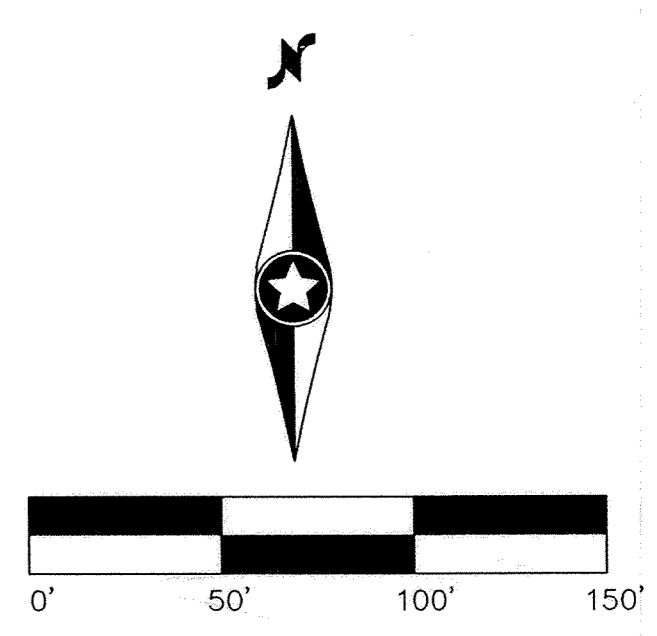
DRAWING NUMBER

3

**WARNING!**  
GAS PIPELINES

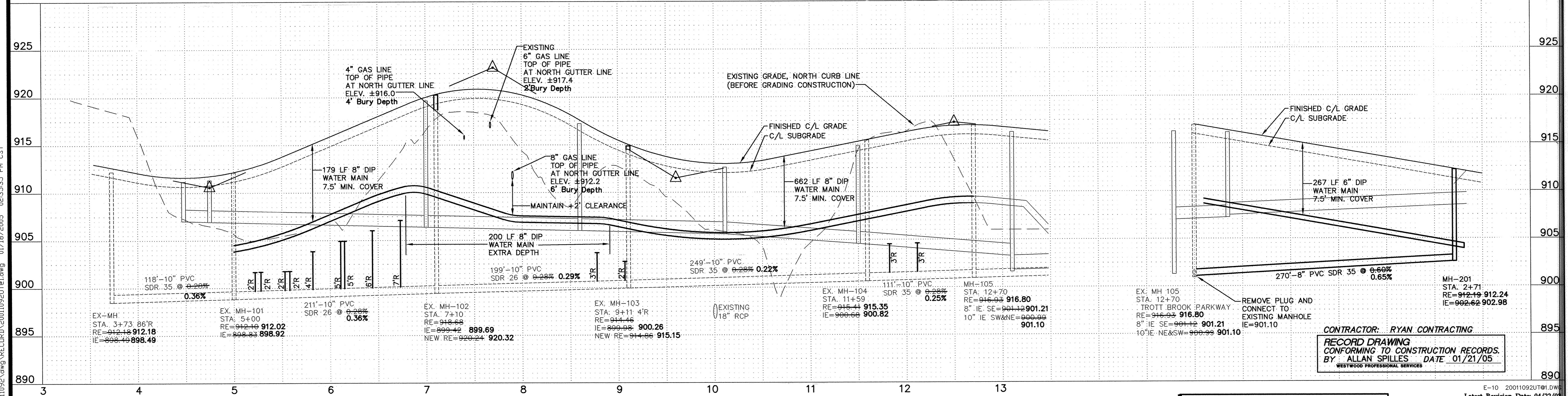


- GENERAL NOTES:**
- XXX.X DENOTES SANITARY SEWER SERVICE INVERT @ END OF FUTURE SERVICE STUB
  - WYE=X+XX DENOTES SANITARY SEWER SERVICE WYE LOCATED ON MAINLINE FROM DOWN STREAM M.H.
  - FLAG HYDRANTS.
  - HYDRANTS TO BE PLACED 5' BEHIND BACK OF CURB.
  - EXTEND RODS ON DEEP VALVES.
  - ALL DROP MANHOLES WITH DROPS OVER 2' TO BE CONSTRUCTED USING OUTSIDE DROPS.
  - SANITARY SEWER & WATER SERVICES TO BE EXTENDED 10' PAST BOC ON ALL LOTS



185TH AVENUE (Sta. 3+15.44 to Sta. 12+70)

185TH CIRCLE



CONTRACTOR: RYAN CONTRACTING  
RECORD DRAWING  
CONFORMING TO CONSTRUCTION RECORDS.  
BY ALLAN SPILLES DATE 01/21/05  
WESTWOOD PROFESSIONAL SERVICES

E-10 20011092UT@1.DWG  
Latest Revision Date: 04/22/03  
Date: 07/12/02 Sheet: 3 OF 14

**Westwood Professional Services, Inc.**  
7599 Anagram Drive  
Eden Prairie, MN 55344  
Phone: 952/937-5150 Fax: 952/937-5822

I hereby certify that this plan was prepared by me or under my direct supervision and that I am a duly licensed PROFESSIONAL ENGINEER under the laws of the State of Minnesota.  
*Francis D. Hagen, II*  
Francis D. Hagen, II  
Date: 01/21/05 License No. 17716

Revisions:  
08/05/02 City Review (CLJ)  
08/19/02 City Review (JFB)  
01/30/03 Gas Line Notes (CLJ)  
04/22/03 185th Avenue Over Gas Lines (CLJ)  
01/21/05 RECORD DRAWING (AS/CKB)

Designed: FDH, II  
Checked: JMM  
Drawn: WH  
Record Drawing by/Date: AS 1/21/05

Prepared for:

**D.R. Horton, Inc.**  
20860 Kenbridge Court  
Lakeville, Minnesota 55044

**Marshes of  
Trott Brook Farms**  
Elk River, Minnesota

**Sanitary Sewer and  
Water Main  
Construction Plans**  
185th Avenue (Sta. 3+15.44 to Sta. 12+70)  
& 185th Circle

DRAWING NUMBER

DRAWING NUMBER

DRAWING NUMBER  
MTR07T.02  
3

PA:20011092.dwg RECD:01/21/05 01/18/2005 02:35:35 PM CST