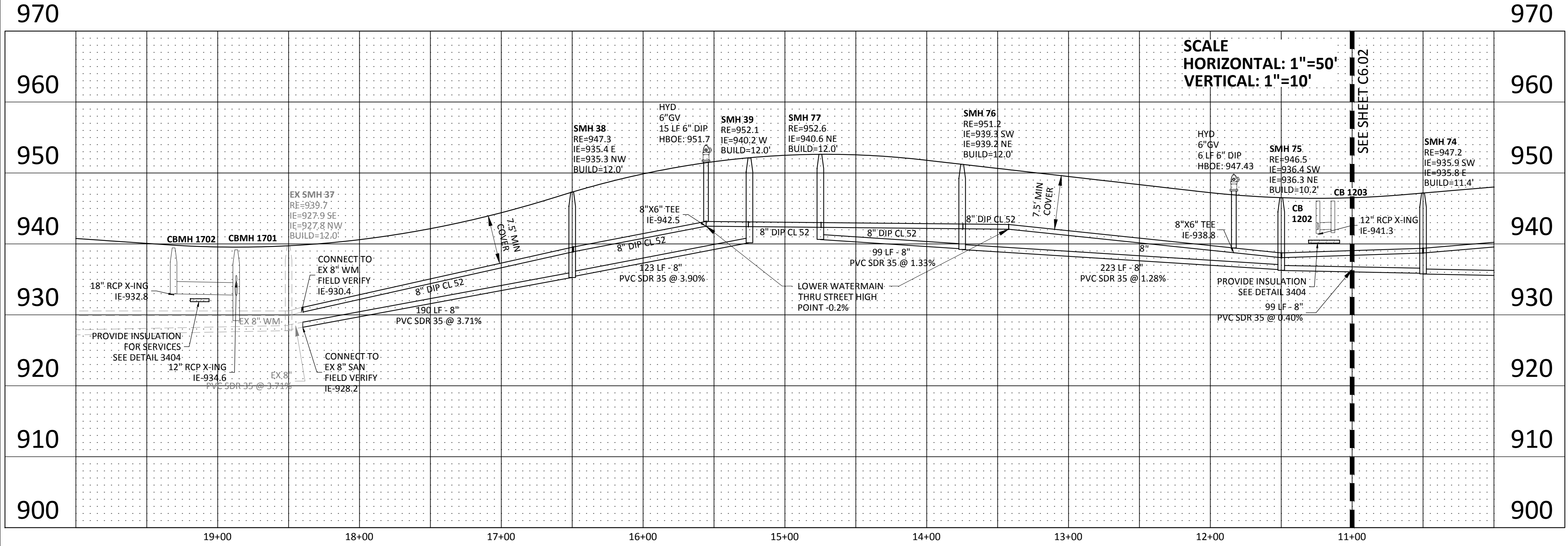


### 189TH AVE NW



**Sambatek**  
www.sambatek.com  
12800 Whitewater Drive, Suite 300  
Minnetonka, MN 55343  
763.476.6010 telephone  
763.476.8532 facsimile

Engineering | Surveying | Planning | Environmental

**Client**  
PAXMAR, LLC.

3495 NORTHDAL BLVD. NW  
SUITE 210  
COON RAPIDS, MN 55448

**Project**  
MISKE  
MEADOWS  
FIFTH ADDITION

**Location**  
ELK RIVER, MN

**Certification**  
I hereby certify that this plan, specification or report was prepared by me or under my direct supervision and that I am a duly licensed professional ENGINEER under the laws of the state of Minnesota.

*Eric T. Luth*  
Eric T. Luth  
Registration No. 50475 Date: 03/26/2018

**Summary**  
Designed: ETL Drawn: MMQ  
Approved: ETL Initial Issue: 3/26/2018  
Phase: CD'S

**Revision History**  
No. Date By Submittal / Revision  
06/14/18 MMQ CONSTRUCTION DOCUMENTS

**Sheet Title**  
FINAL SANITARY &  
WATERMAIN P&P  
- 189TH AVE NW

**Sheet No. Revision**  
C6.01

**Project No.** 20460.06