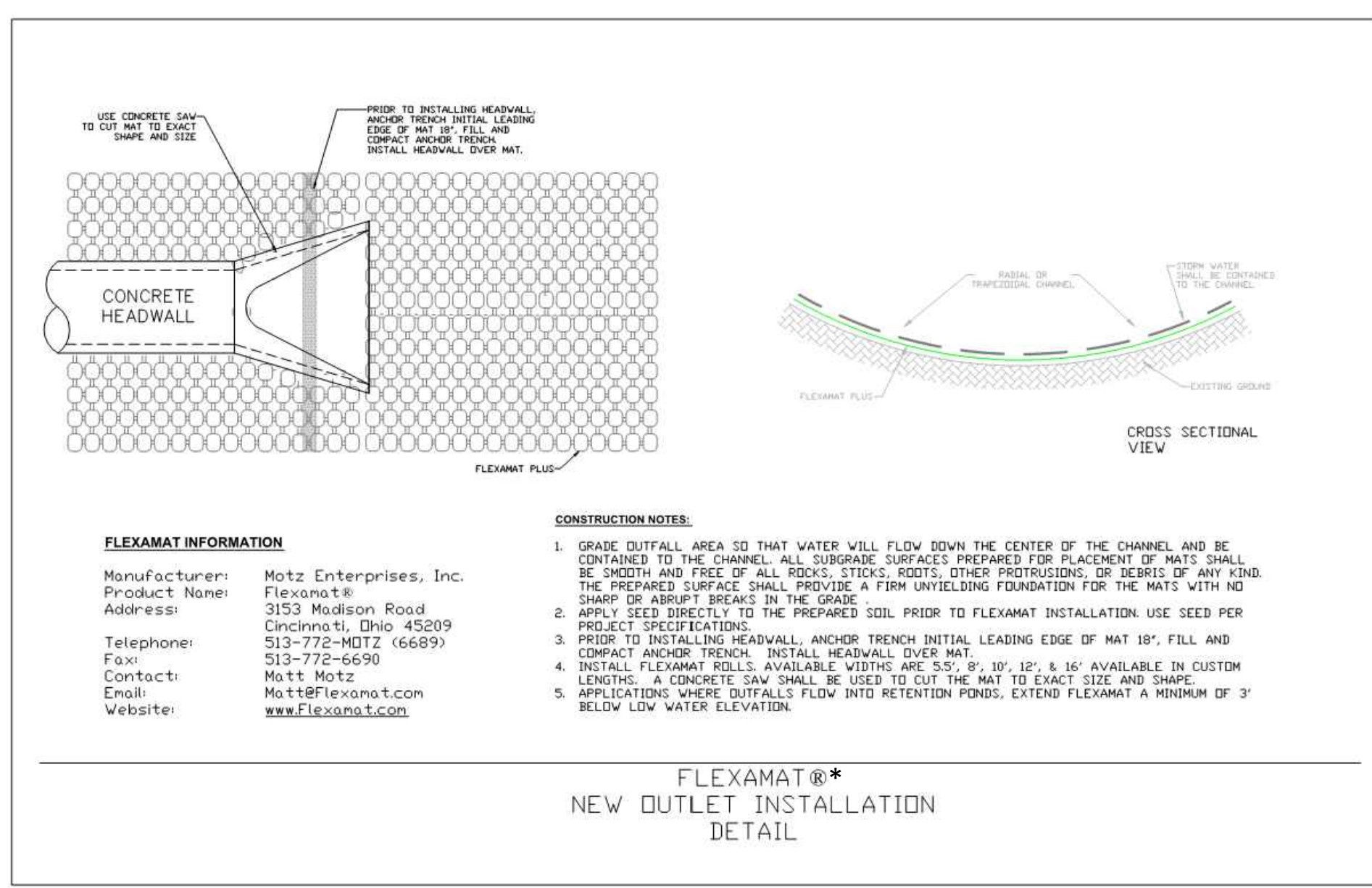


FLEX-A-MAT INFORMATION
Manufacturer: Motz Enterprises, Inc.
Product Name: Flex-a-mat®
Address: 11006 Reading Road, Suite 301, Cincinnati, Ohio 45242
Telephone: 513-772-6689
Fax: 513-772-6690
Contact: Matt Motz
Website: www.Flexamat.com

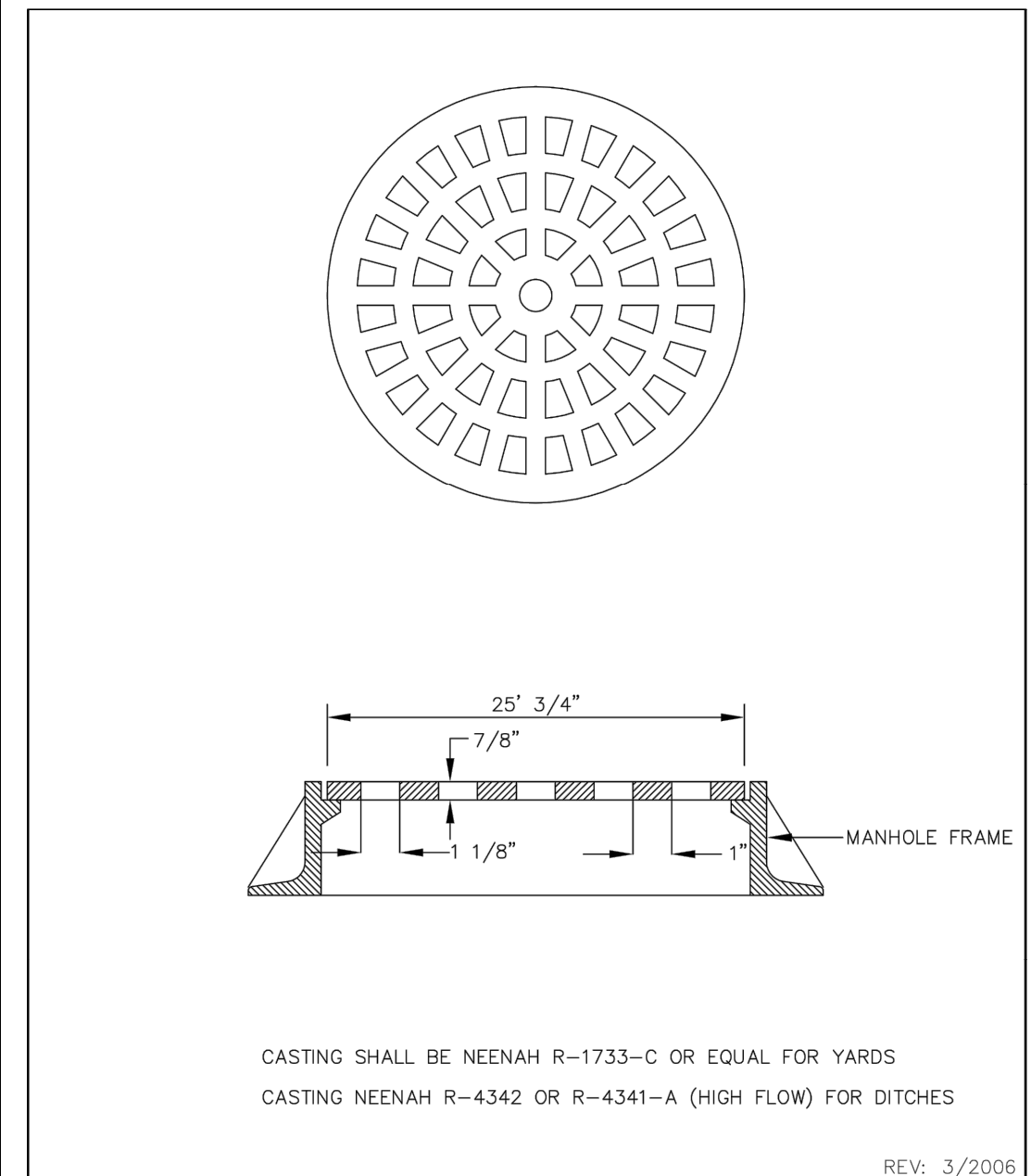
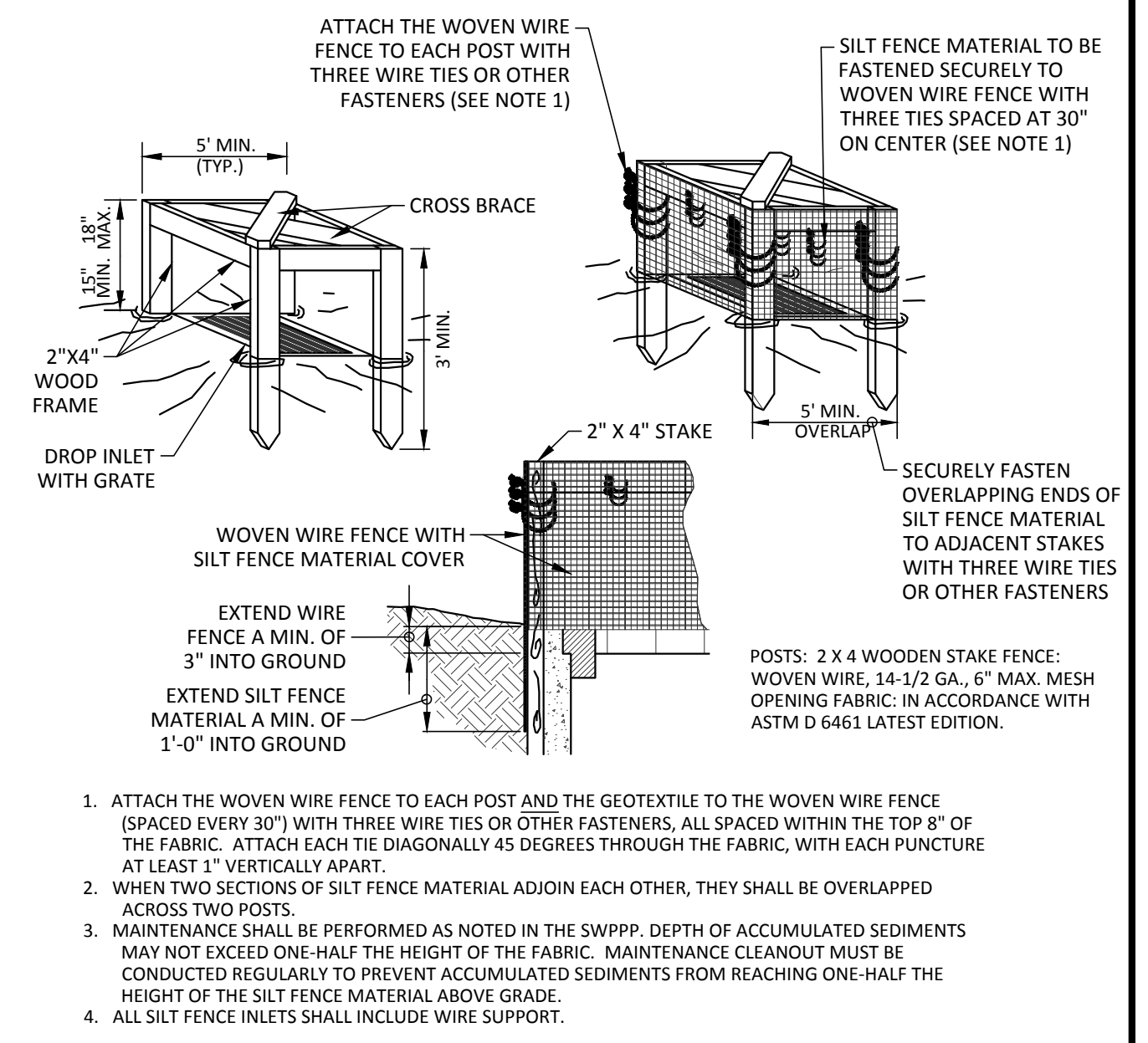
CONSTRUCTION NOTES:
1. THE SLOPE SUBGRADE MUST BE STABLE, UNIFORMLY GRADED, FREE OF ROCKS, ROOTS, AND OTHER DEBRIS, WITH NO ABRUPT GRADE CHANGES. PRIOR TO INSTALLING THE FLEX-A-MAT EROSION CONTROL MATERIALS.
2. SITE SPECIFIC SEED MIXES, INCLUDING NATIVE GRASSES, SHOULD BE INSTALLED ON THE PREPARED SUBGRADE PRIOR TO INSTALLING THE FLEX-A-MAT EROSION CONTROL MATERIALS.
3. BEGIN INSTALLING FLEX-A-MAT AT THE DOWNSTREAM END OF THE SLOPE TO BE STABILIZED BY VERTICALLY BURYING THE DOWNSTREAM END OF THE FLEX-A-MAT 18" DEEP THE FULL WIDTH OF THE SLOPE. THE UPSTREAM END OF EACH SECTION OF FLEX-A-MAT IS TO BE VERTICALLY BURIED 18" IN DEPTH.
4. FLEX-A-MAT SHOULD BE INSTALLED PARALLEL TO THE STREAM. THE TOP EDGE OF THE FLEX-A-MAT SHOULD BE A MINIMUM OF 3 FEET ABOVE THE EXPECTED HIGH WATER ELEVATION OF THE STREAM.
5. FLEX-A-MAT IS AVAILABLE IN WIDTHS OF 8', 10', 12', AND 16'.

FLEX-A-MAT®*
DRAINAGE CHANNEL BANK STABILIZATION DETAIL
NTS

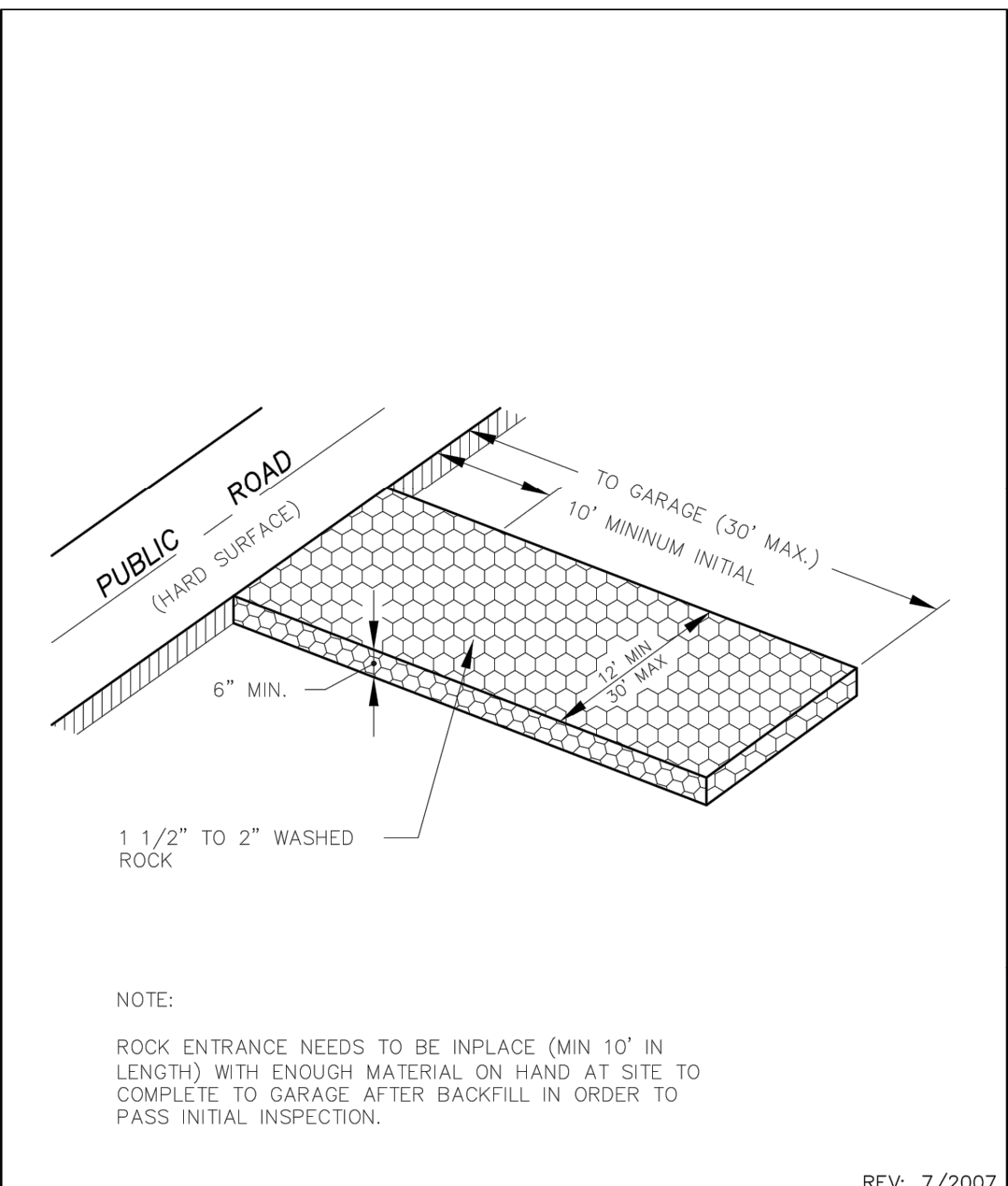
*OR APPROVED EQUAL



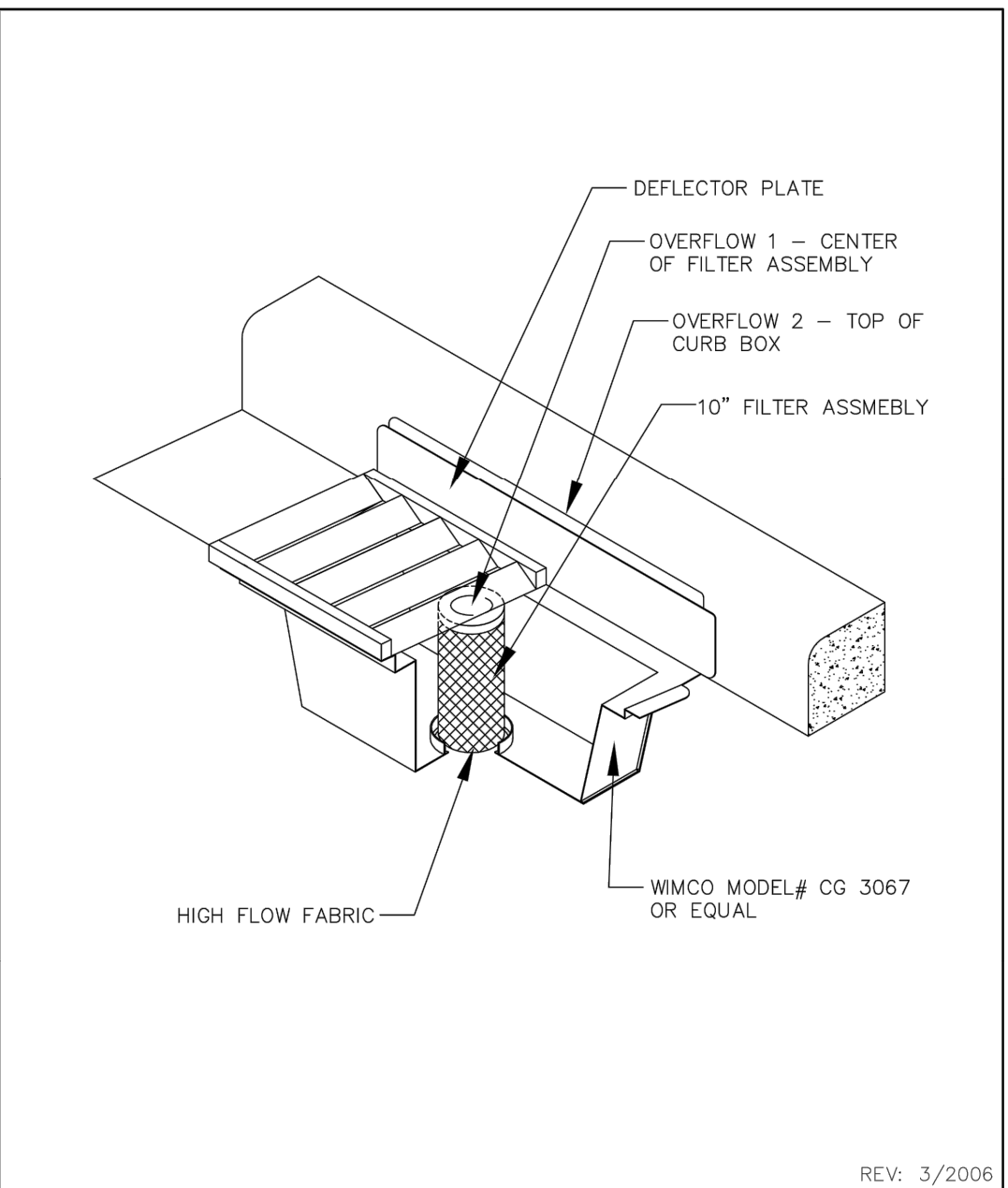
*OR APPROVED EQUAL



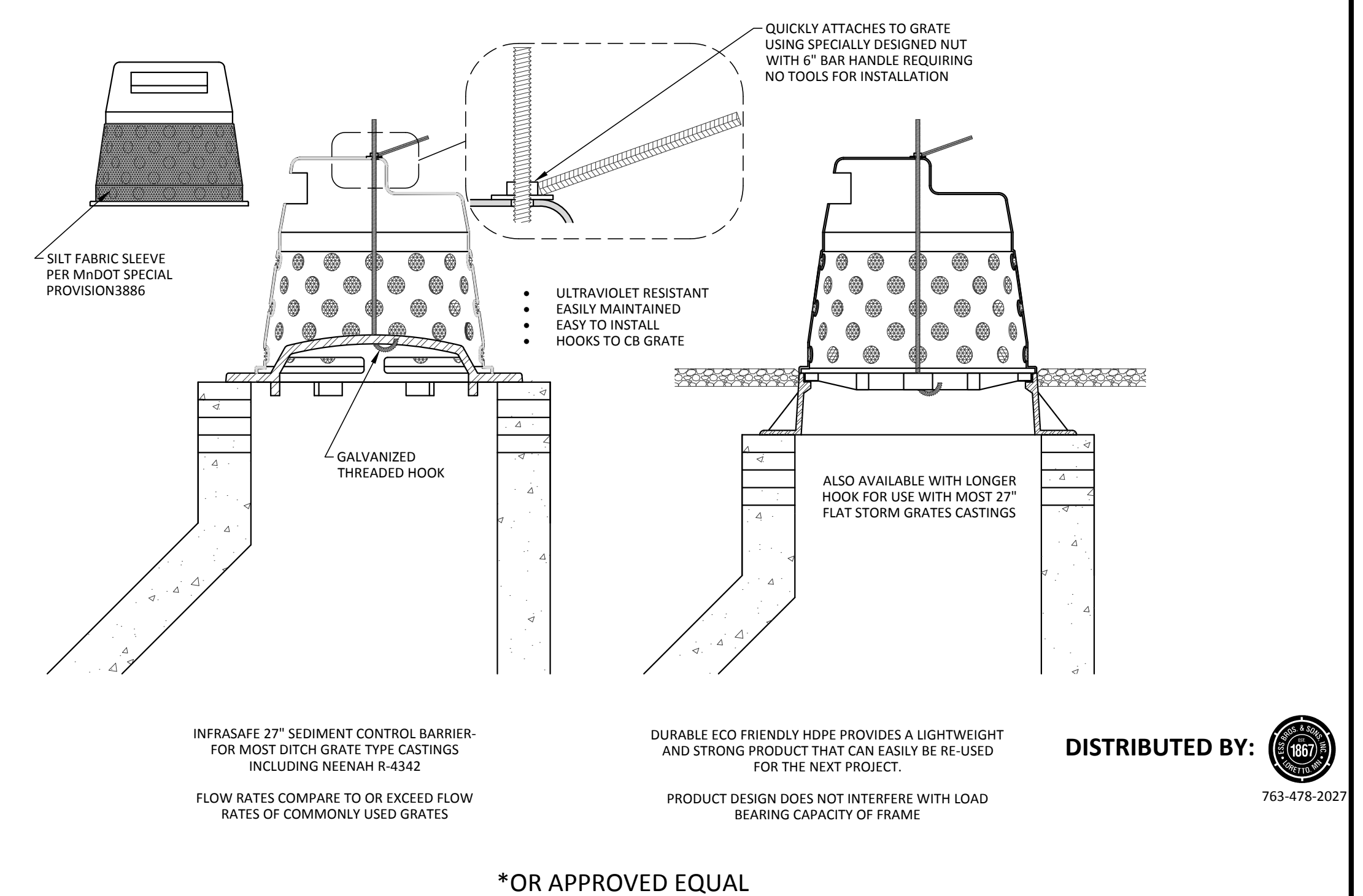
GRATE CASTING
STANDARD PLATE NO. 2509



ROCK CONSTRUCTION ENTRANCE
BUILDING PERMIT
STANDARD PLATE NO. 2015



(IP2)
STANDARD PLATE NO. 2511



3 **27" INFRASAFE SEDIMENT CONTROL BARRIER (IP3)***
N.T.S.