

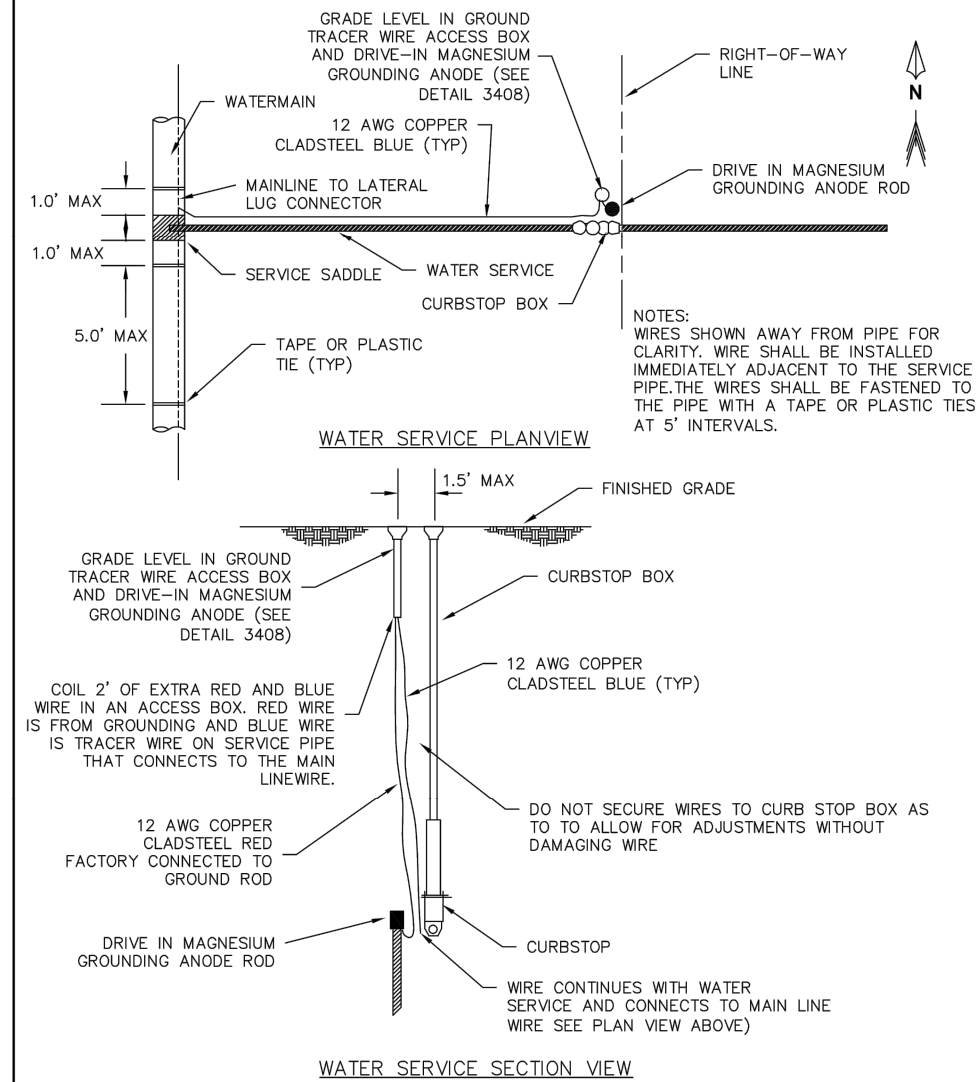
THE BOTTOM OF THE TRENCH SHALL BE SHAPED TO FIT THE PIPE BARREL FOR AT LEAST 50% OF THE OUTSIDE DIAMETER. THE REMAINDER OF THE PIPE IS SURROUNDED TO A HEIGHT OF AT LEAST 6" ABOVE ITS TOP BY SELECT FILL MATERIALS, PLACED BY HAND TOOLS AND COMPACTED TO COMPLETELY FILL ALL SPACES UNDER AND ADJACENT TO THE PIPE.

NOTE: ALL COSTS OF EXCAVATION BELOW GRADE AND PLACEMENT OF GRANULAR BEDDING SHALL BE INCLUDED IN THE BID PRICES FOR PIPE ITEMS.

REV: 3/2008

CLASS C PIPE BEDDING

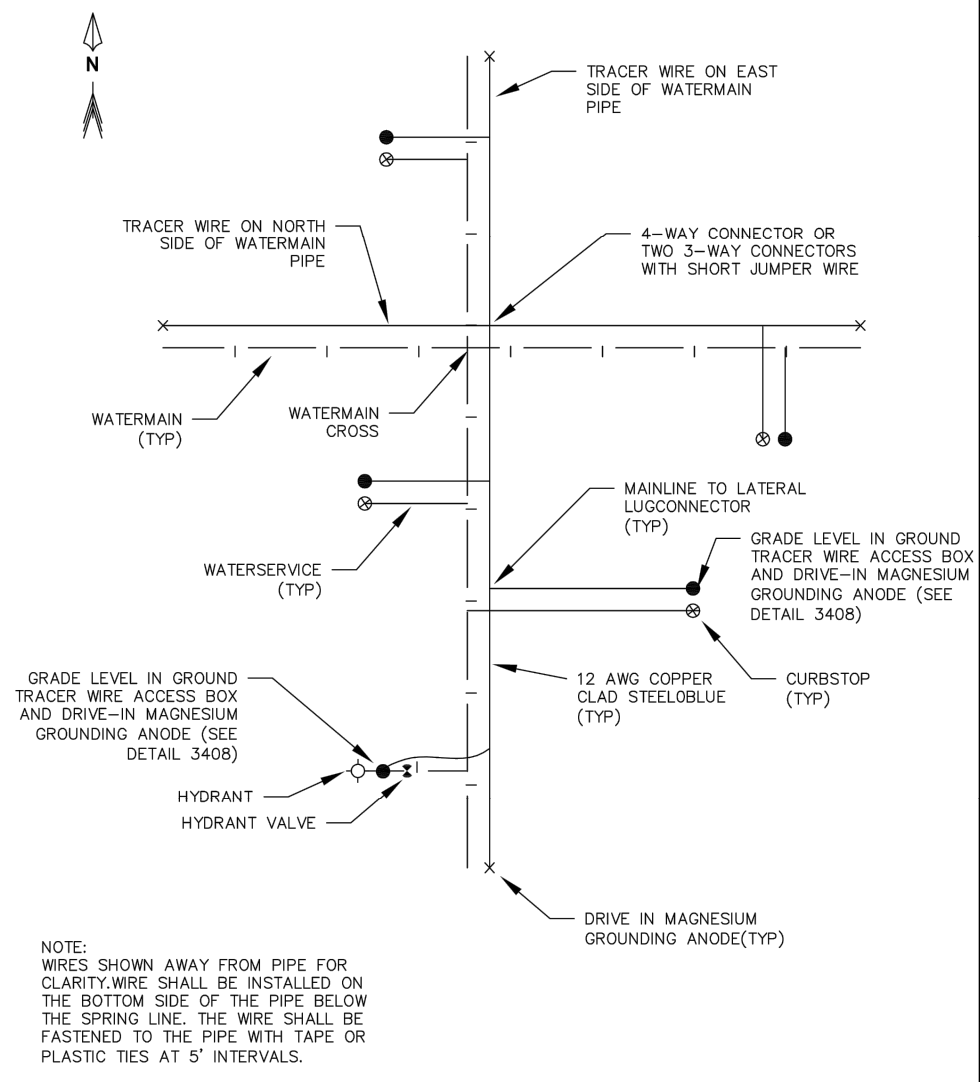
STANDARD PLATE NO. **3405**



REV: 2/2017

TRACER WIRE DETAIL

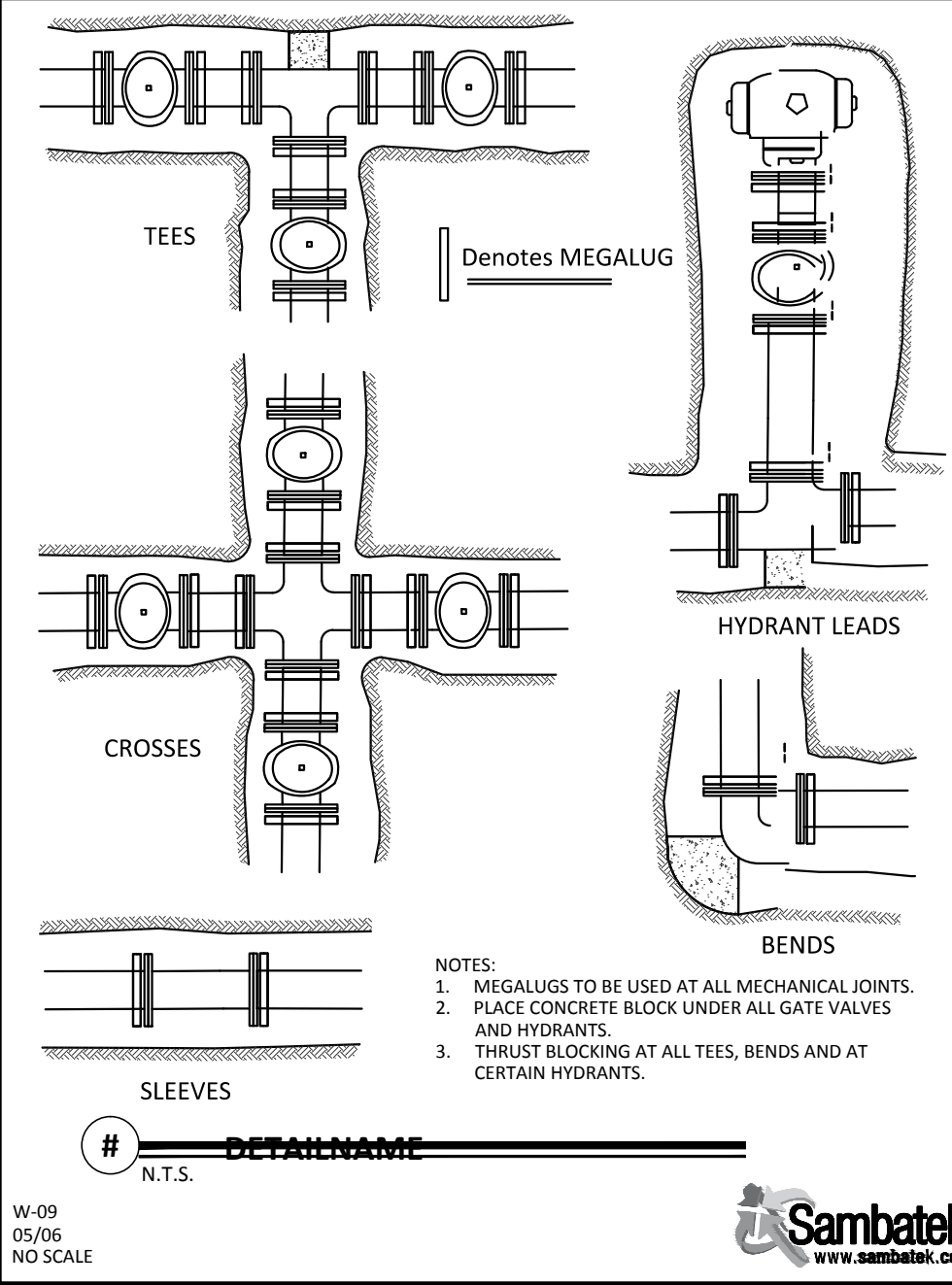
STANDARD PLATE NO. **3408**



REV: 2/2017

TRACER WIRE LAYOUT DETAIL

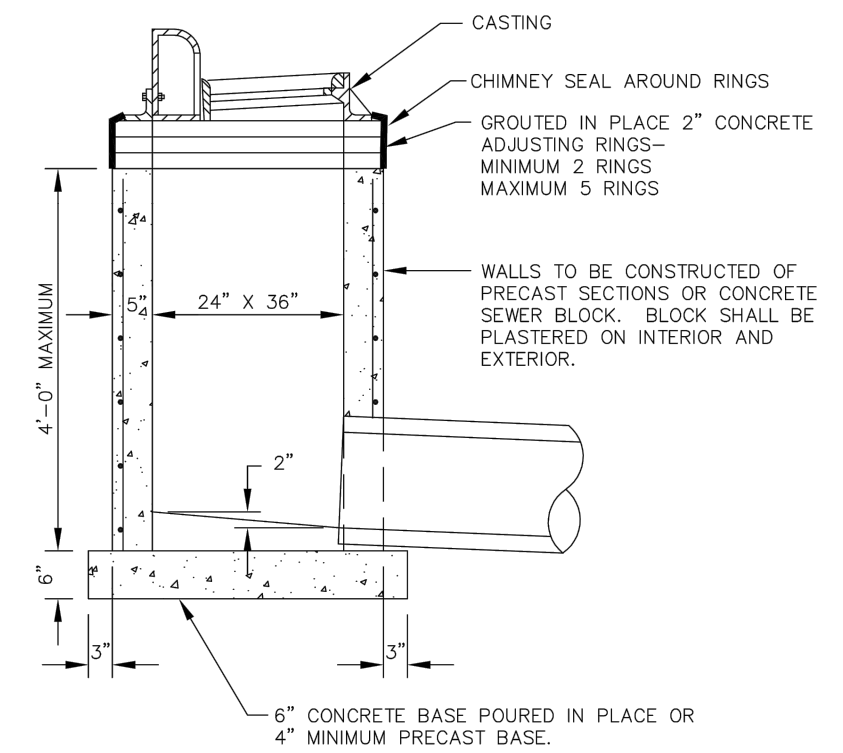
STANDARD PLATE NO. **3409**



W-09
05/06
NO SCALE

MEGALUG CONNECTIONS

STANDARD PLATE NO. **3409**

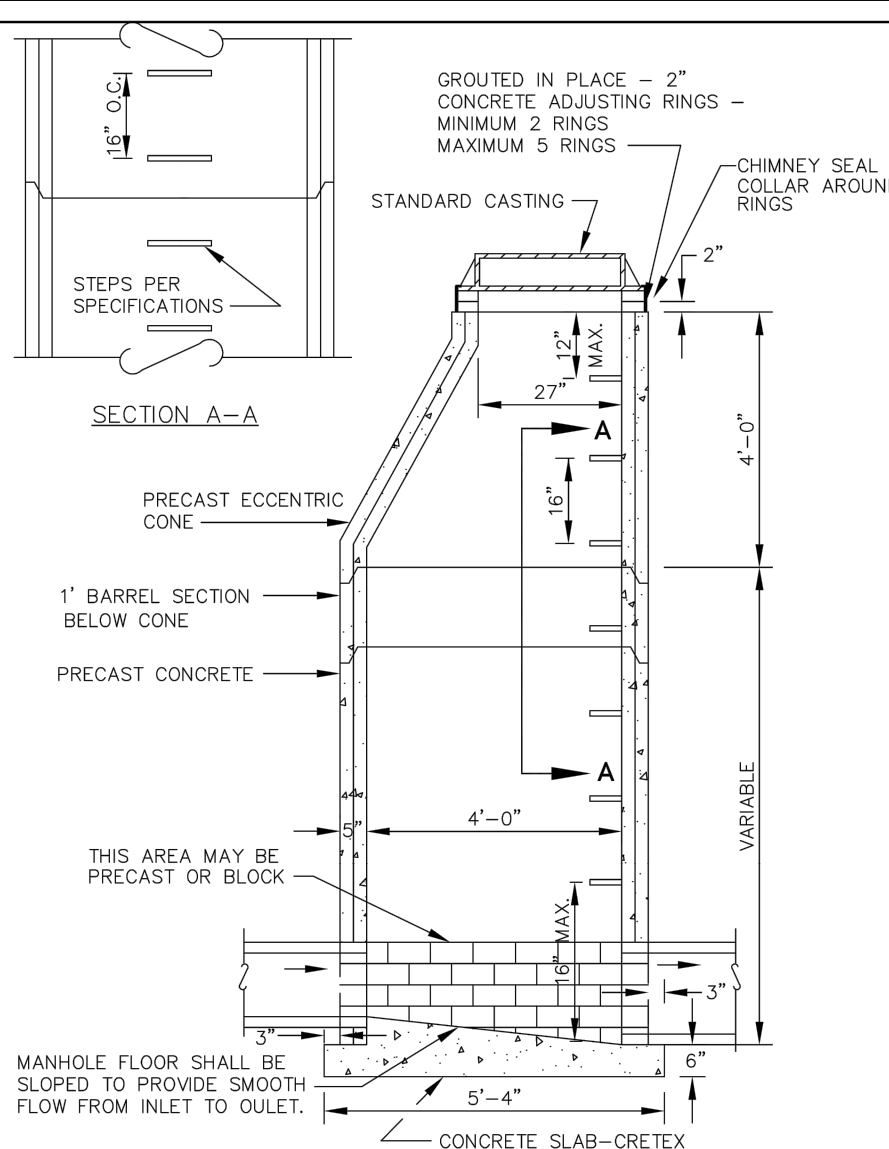


NOTE: REINFORCING SHALL CONSIST OF A SINGLE LINE OF STEEL WIRE FABRIC HAVING AN AREA OF NOT LESS THAN 0.17 SQ. IN. PER FOOT OF HEIGHT.

REV: 2/2017

SHALLOW CATCH BASIN

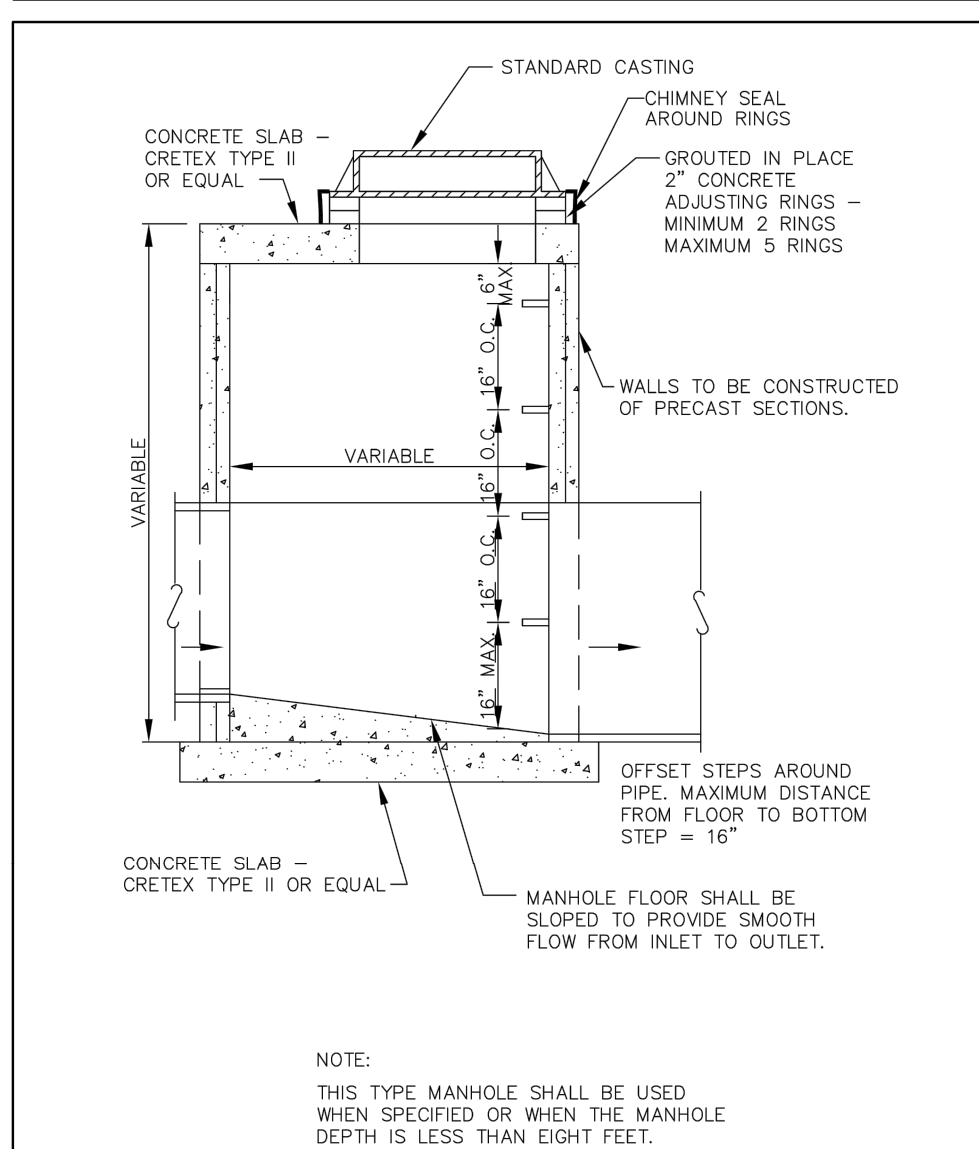
STANDARD PLATE NO. **2500**



REV: 2/2017

STANDARD MANHOLE

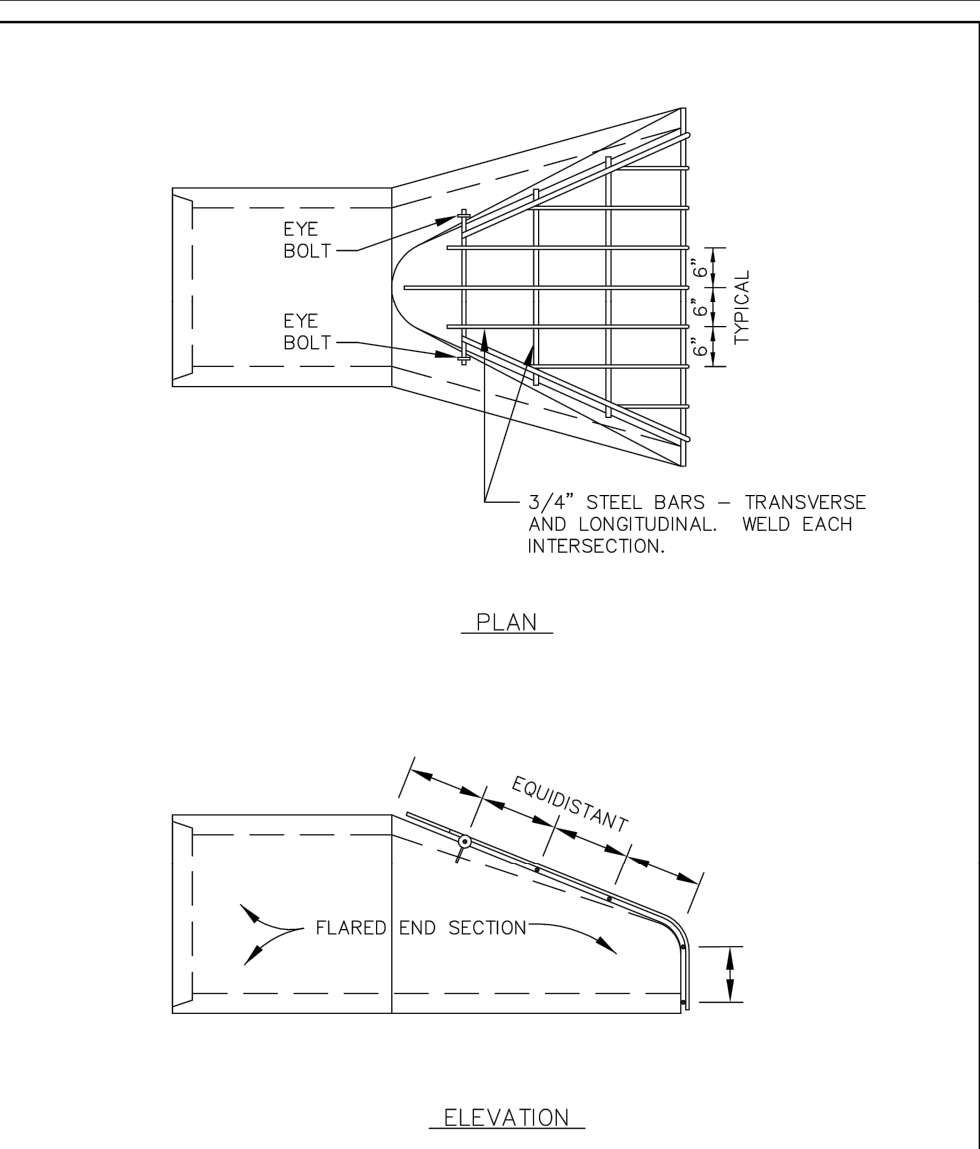
STANDARD PLATE NO. **2501**



REV: 2/2017

SLAB TOP MANHOLE

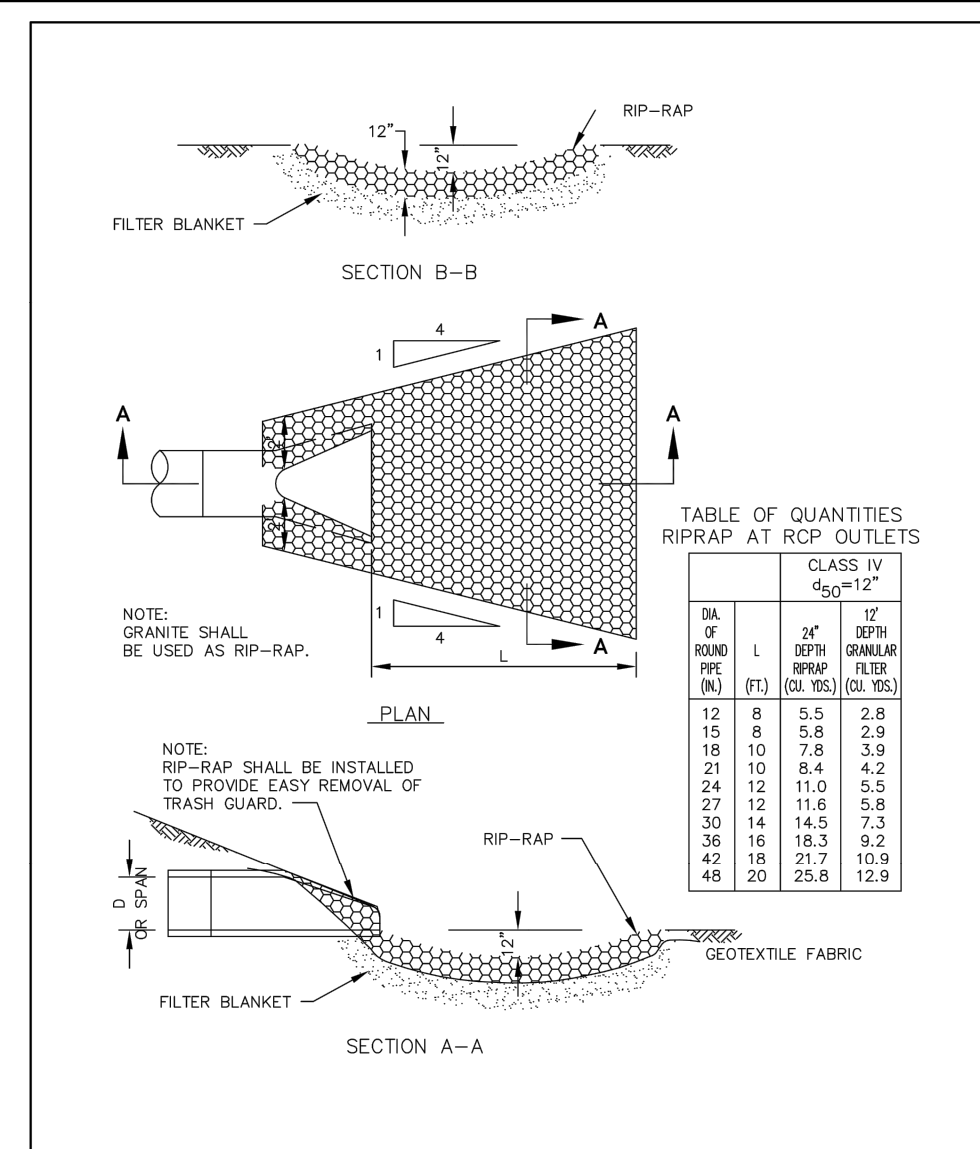
STANDARD PLATE NO. **2502**



REV: 3/2006

TRASH GUARD

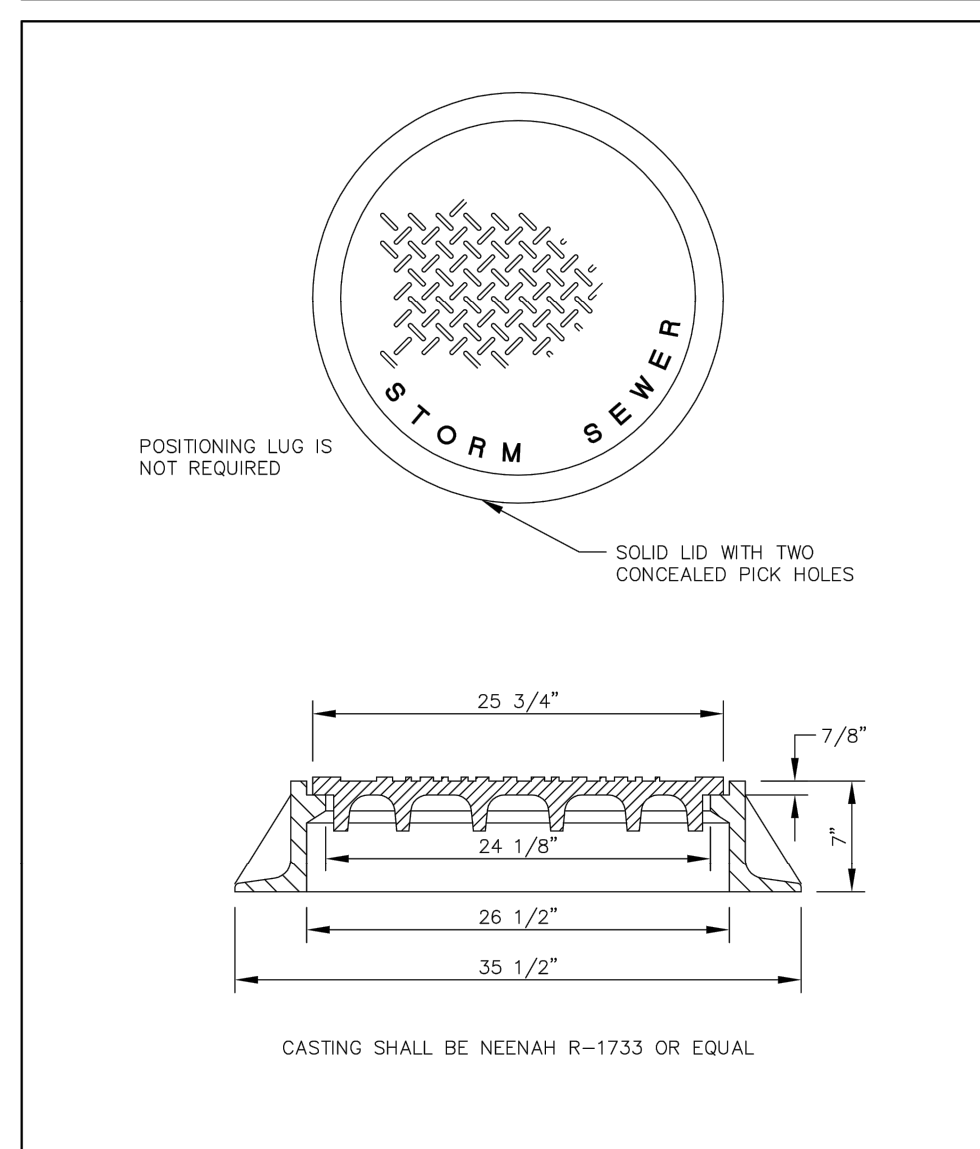
STANDARD PLATE NO. **2504**



REV: 3/2006

RIP-RAP INSTALLATION

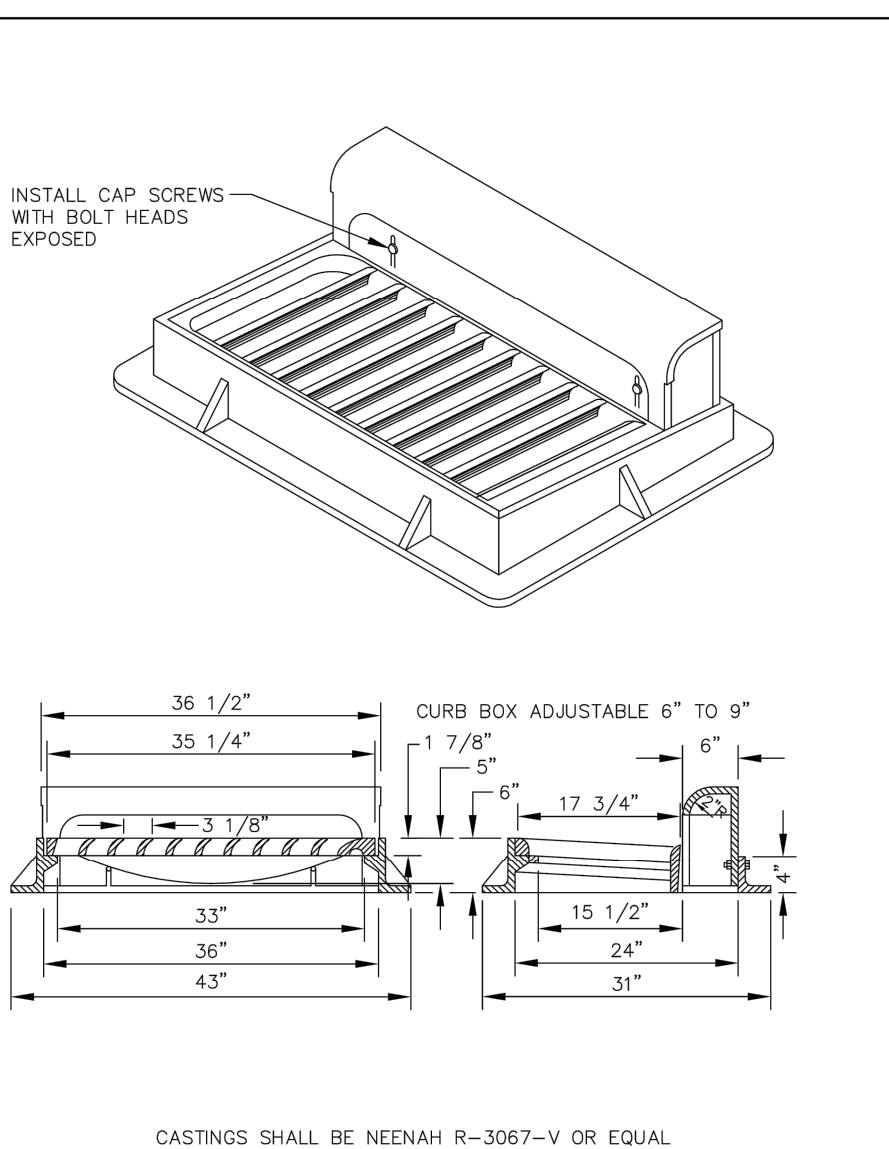
STANDARD PLATE NO. **2505**



REV: 3/2006

STANDARD MANHOLE CASTING

STANDARD PLATE NO. **2506**



REV: 3/2008

STANDARD INLET CASTING

STANDARD PLATE NO. **2507**

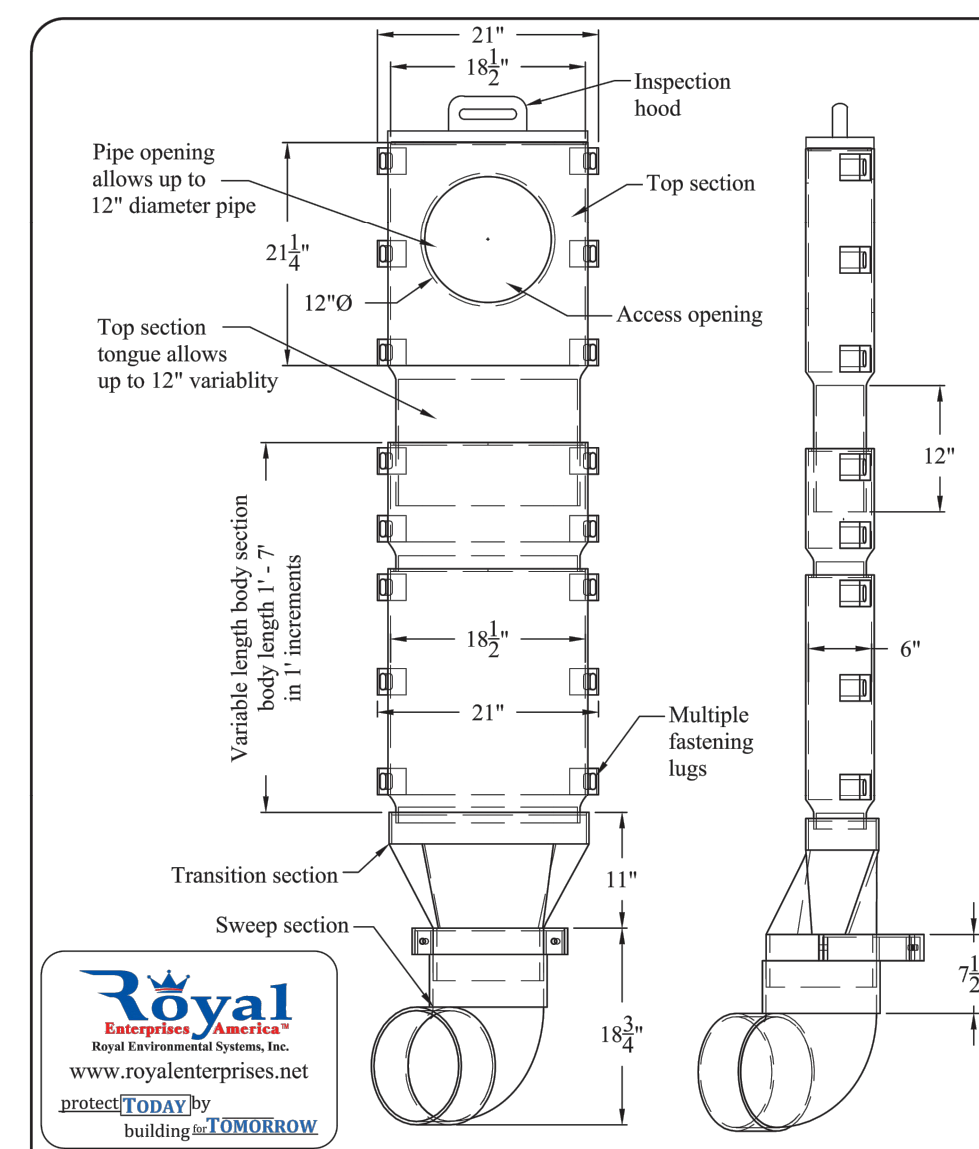


Plate #

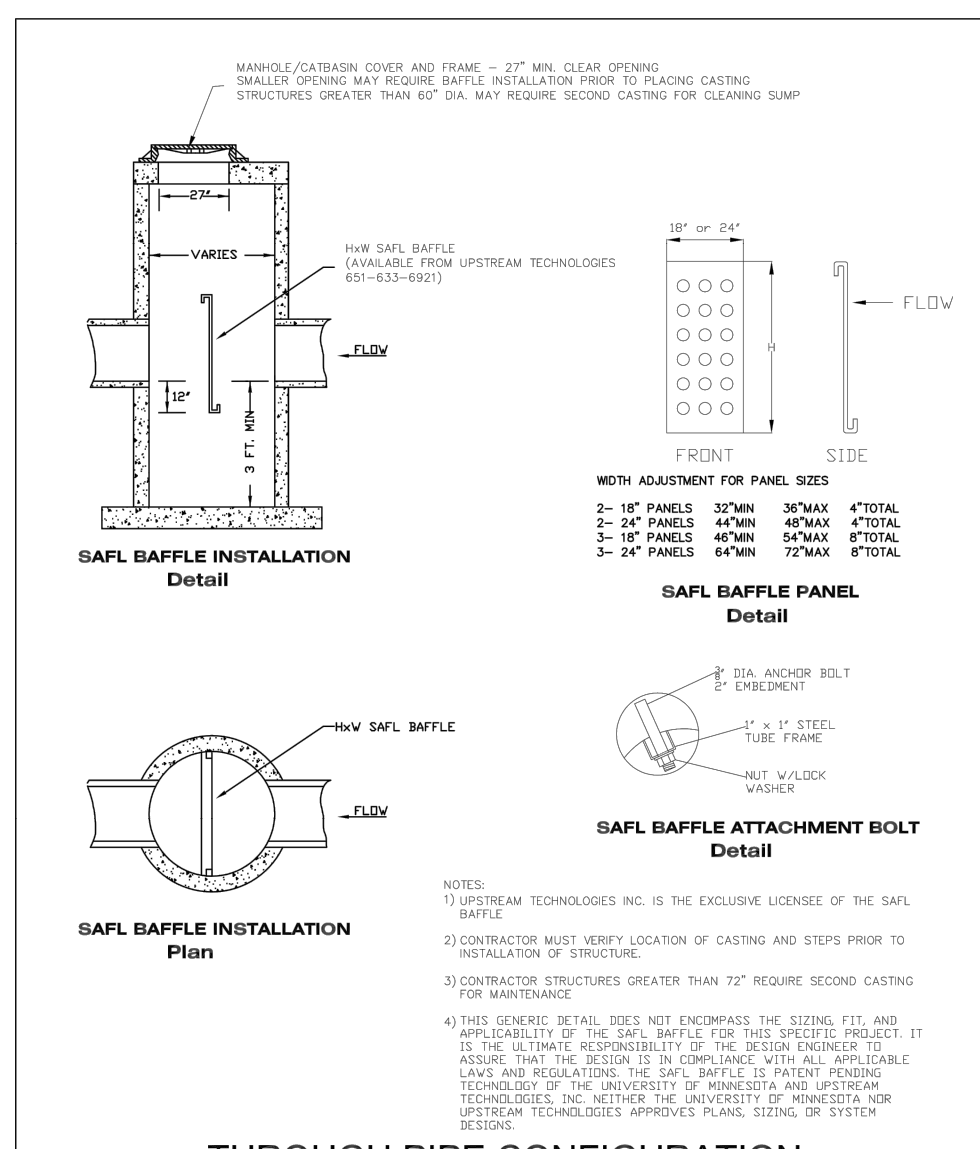
IntraFlow - Inside Drop System

Standard Details

Plate # **IntraFI-1**

Rev. Date: **1-20-16** SEG

P.O. Box 430 • 30622 Forest Blvd • Stacy, MN 55079 • Ph: 651.462.2130



UPSTREAM TECHNOLOGIES

THROUGH PIPE CONFIGURATION

SAFL BAFFLE STANDARD DETAIL

UPSTREAM TECHNOLOGIES

NEW BRIGHTON, MN

651-633-6921

Upstream Technologies

I hereby certify that this plan, specification or report was prepared by me or under my direct supervision and that I am a duly licensed professional ENGINEER under the laws of the state of Minnesota.

Eric T. Luth

Eric T. Luth
Registration No. 50475 Date: 03/26/2018

If applicable, contact us for a wet signed copy of this plan which is available upon request at Sambatek's, Minnetonka, MN office.

Designed: ETL Drawn: MMQ
Approved: ETL Initial Issue: 3/26/2018
Phase: CD'S