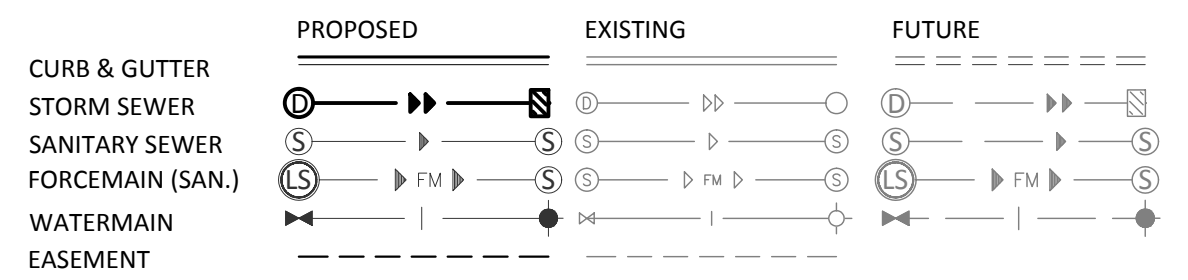
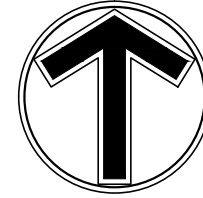


LEGEND



Know what's below.
Call before you dig.

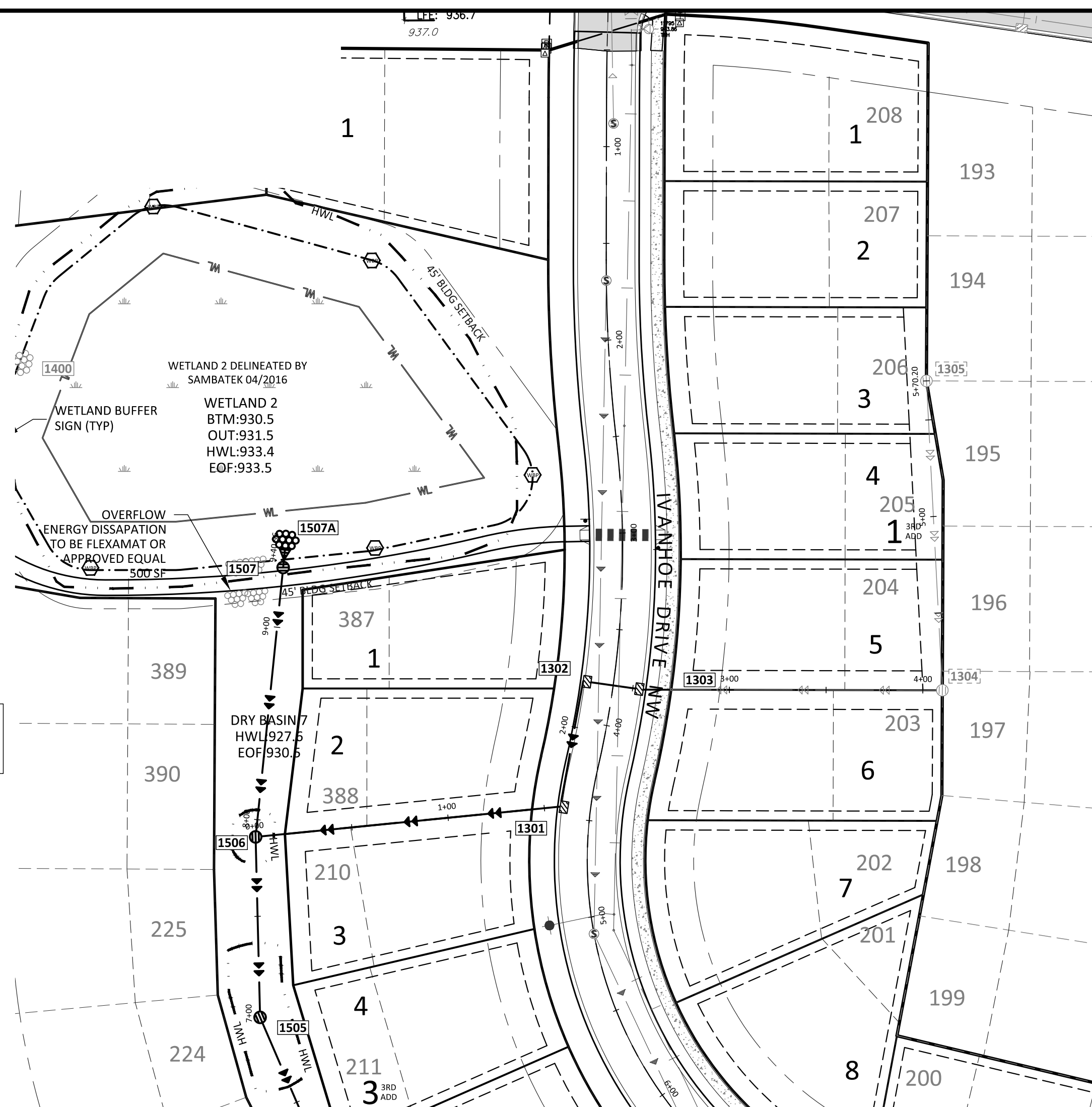


0 50 100
SCALE IN FEET

Structure Table

STR. #	TYPE	DIA.	RIM	BLD	IE	Casting
1301	CBMH	48"Ø	937.7	9.6	931.6	R-3067-V
1302	CBMH	48"Ø	937.2	5.2	932.0	R-3067
1303	CBMH	48"Ø	937.2	5.0	932.2	R-3067

STORM 1300



RECORD PLAN NOTES

COMPLETED BY: SAMBATEK, INC.
DATE OF COMPLETION: 12/01/2017
STREET/UTILITY CONTRACTOR: C. W. HOULE, INC.
GRADING CONTRACTOR: FEHN COMPANIES, INC.

THESE RECORD PLANS HAVE BEEN PREPARED, IN PART, BASED ON INFORMATION COMPILED AND FURNISHED BY OTHERS. THE ENGINEER HAS NOT VERIFIED THE ACCURACY AND/OR COMPLETENESS OF THE INFORMATION PROVIDED AND SHALL NOT BE RESPONSIBLE FOR ANY ERRORS OR OMISSIONS WHICH HAVE BEEN INCORPORATED INTO THESE RECORD PLANS AS A RESULT.

Sambatek
www.sambatek.com
12800 Whitewater Drive, Suite 300
Minnetonka, MN 55343
763.476.6010 telephone
763.476.8532 facsimile
Engineering | Surveying | Planning | Environmental

Client
PAXMAR, LLC.

3495 NORTHDAL BLVD. NW
SUITE 210
COON RAPIDS, MN 55448

Project
MISKE
MEADOWS
THIRD
ADDITION

Location
ELK RIVER, MN

Certification

I hereby certify that this plan, specification or report was prepared by me or under my direct supervision and that I am a duly licensed professional ENGINEER under the laws of the state of Minnesota.

Eric T. Luth

Eric T. Luth
Registration No. 50475 Date: 04/19/2017

If applicable, contact us for a wet signed copy of this plan which is available upon request at Sambatek's, Minnetonka, MN office.

Summary

Designed: NRH Drawn: NRH
Approved: ETL Book / Page: xx/xx
Phase: FINAL Initial Issue: 04/19/2017

Revision History

No.	Date	By	Submittal / Revision
04/19/17	ETL		WATERMAIN PERMIT
05/05/17	JEB		CITY RESUBMITTAL
06/16/17	JEB		CONSTRUCTION DOCUMENTS
12/01/17	MMQ		RECORD PLANS

RECORD PLAN

Sheet Title
STORM SEWER
PLAN & PROFILE

Sheet No. Revision

C7.01

Project No. 20460.03

STORM 1300

