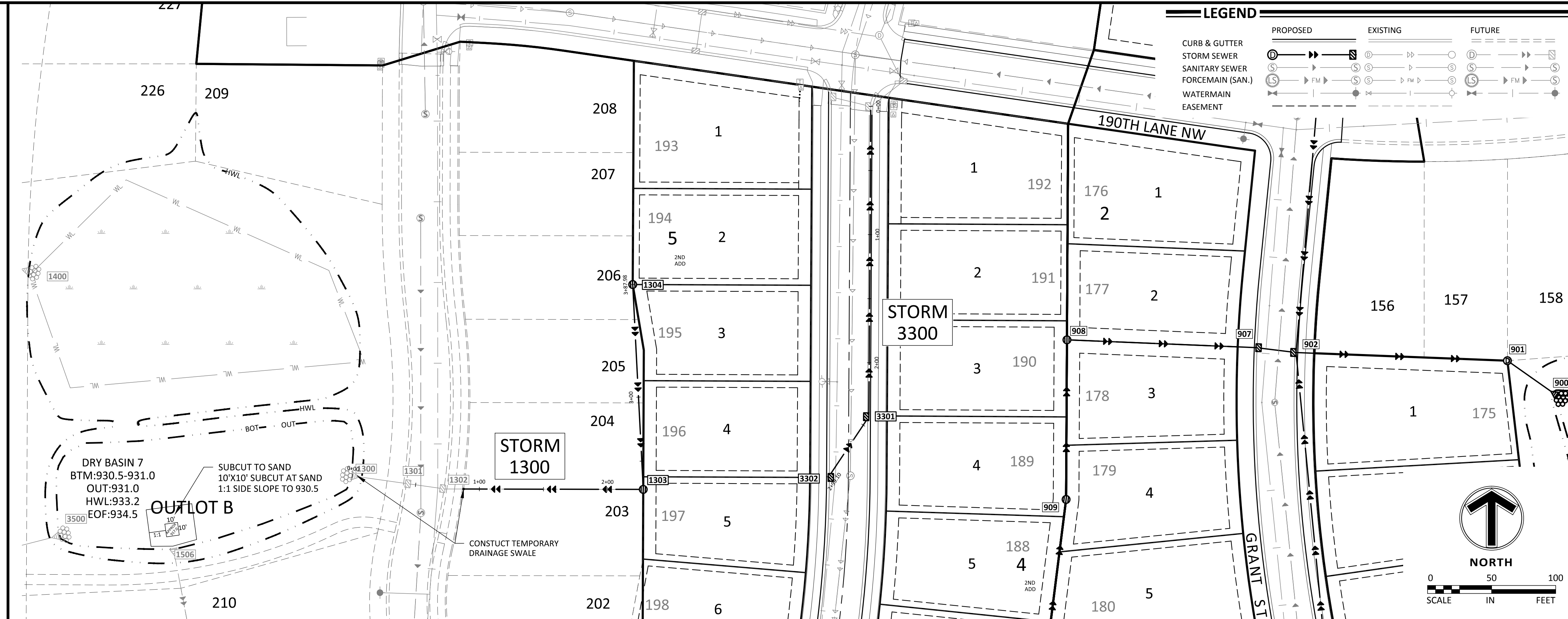


STR. #	TYPE	DIA.	RIM	BLD	IE	Casting
101	CBMH	48"	926.7	3.7	923.0	R-3067
102	CBMH	48"	926.7	3.6	923.1	R-3067
103	CBMH	48"	926.8	3.6	923.2	R-3067
104	CBMH	48"	927.5	3.4	924.1	R-4342
201	CBMH	48"	927.5	3.5	924.0	R-4342
202	CBMH	48"	929.6	3.6	926.0	R-4342
203	CB	27"	933.4	3.4	930.0	R-4342
501	STMH	48"	930.5	5.5	925.0	R-1733
504	CBMH	48"	932.0	4.6	927.4	R-4342
506	CBMH	48"	936.4	4.6	931.8	R-3067-V
507	CBMH	2'x3'	936.3	4.0	932.3	R-3067-V
701	CBMH	48"	937.7	8.0	933.2	R-3067
702	CBMH	48"	937.7	4.3	933.4	R-3067
706	CBMH	48"	941.3	4.1	937.2	R-3067-V
707	CBMH	48"	942.1	4.2	937.9	R-3067-V
708	CB	2'x3'	941.9	3.4	938.5	R-3067-V
901	STMH	48"	932.5	4.8	927.7	R-1733
902	CBMH	60"	934.6	9.7	928.4	R-3067
903	CBMH	48"	940.6	11.2	929.4	R-3067-V
904	CBMH	48"	943.9	13.8	930.1	R-3067-V
905	CBMH	48"	947.1	15.9	931.2	R-3067-V
907	CBMH	48"	934.6	5.6	929.0	R-3067
908	CBMH	48"	934.2	4.2	930.0	R-4342
909	CBMH	48"	934.8	4.1	930.7	R-4342
910	CB	27"	934.7	3.2	931.5	R-4342
911	CB	2'x3'	938.3	4.0	934.3	R-3067
912	CB	2'x3'	940.8	4.0	936.7	R-3067-V
913	CBMH	48"	943.2	4.4	938.8	R-3067
914	CB	2'x3'	943.2	4.0	939.2	R-3067
1001	STMH	48"	935.4	3.2	932.2	R-1733
1002	CBMH	48"	945.2	11.4	937.3	R-3067-V
1003	CBMH	48"	943.0	4.4	938.6	R-3067
1004	CB	2'x3'	943.5	4.0	939.5	R-3067

STR. #	TYPE	DIA.	RIM	BLD	IE	Casting
1005	CB	2'x3'	943.0	4.0	939.0	R-3067-V
1101	CBMH	48"	937.5	4.1	933.4	R-4342
1102	CBMH	48"	938.4	4.4	934.0	R-4342
1103	CBMH	48"	939.4	4.6	934.8	R-4342
1104	CB	27"	939.9	3.9	936.0	R-4342
1303	CBMH	48"	936.5	3.5	933.0	R-4342
1304	CB	27"	938.0	4.0	934.0	R-4342
3301	CBMH	48"	940.7	3.9	936.8	R-3067-V
3302	CB	2'x3'	940.9	3.6	937.3	R-3067-V

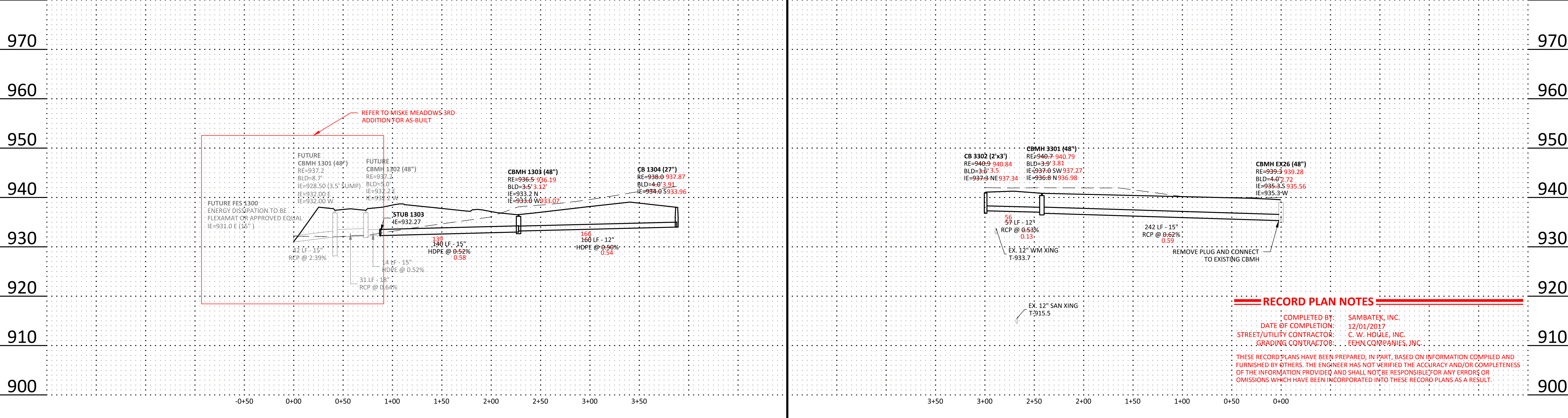
\* SAFI Baffle, OR APPROVED EQUAL, TO BE INSTALLED IN ALL SUMP CATCH BASIN MANHOLES

STR. LBL	TYPE	DIA.	IE	FLEX-A-MAT
100	FES	21"	922.5	8'x8'
200	FES	18"	923.0	8'x8'
500	FES	21"	924.8	8'x8'
505	FES	12"	927.5	INLET
700	FES	18"	933.0	8'x8'
900	FES	24"	927.5	8'x8'
906	FES	15"	932.0	INLET
1000	FES	15"	932.0	8'x8'
1100	FES	15"	932.0	8'x8'



## STORM 1300

## STORM 3300



**Summary**  
Designed: NRH  
Approved: DS  
Phase: FINAL  
Drawn: JSO/NRH  
Book / Page:  
Initial Issue: 02/10/2017

**Revision History**

No.	Date	By	Submittal / Revision
A	06/16/17	NRH	CONSTRUCTION DOCUMENTS
B	12/01/17	JTA	REVISED PAD ELEVATIONS AND DRIVEWAY LOCATIONS
			MMQ RECORD PLANS

**Certification**  
I hereby certify that this plan, specification or report was prepared by me or under my direct supervision and that I am a duly licensed professional ENGINEER under the laws of the state of Minnesota.

Nathan R. Herman  
Registration No. 47982 Date: 02/10/2017  
If applicable, contact us for a wet signed copy of this plan which is available upon request at Sambatek's, Minnetonka, MN office.

**Client**  
PAXMAR

**Project**  
MISKE MEADOWS  
PHASE I & PHASE II  
ELK RIVER, MN

**Sheet Title**  
STORM SEWER PLAN &  
PROFILE

**Sheet No. Revision**  
C7.06 B  
**Project No.** PAX 20460