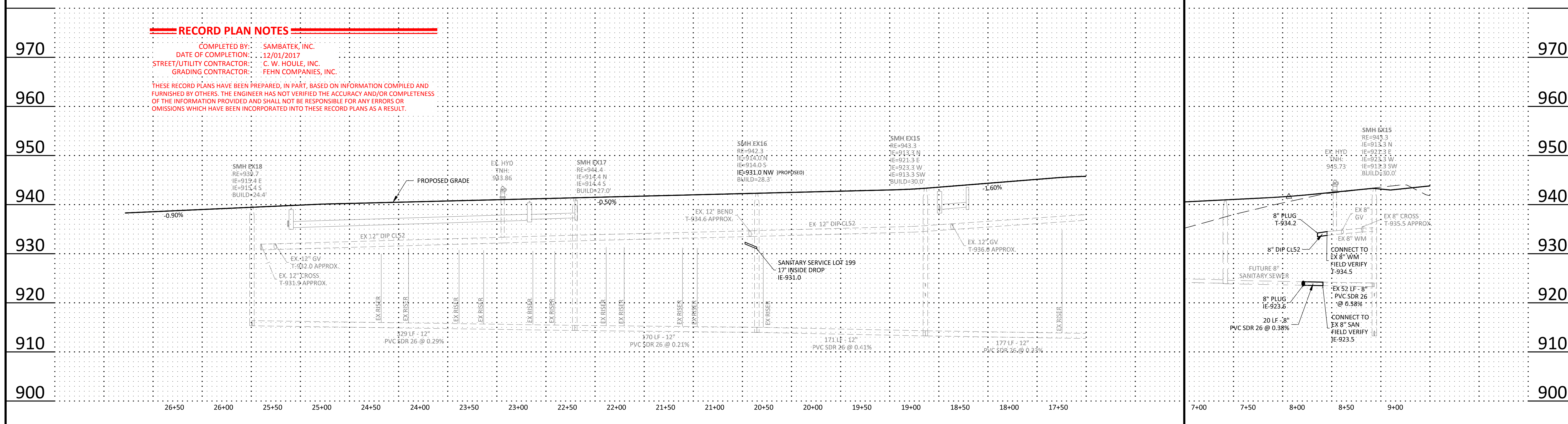


IVANHOE STREET NW

IVANHOE DRIVE NW



RECORD PLAN NOTES

COMPLETED BY: SAMBATEK, INC.
 DATE OF COMPLETION: 12/01/2017
 STREET/UTILITY CONTRACTOR: C. W. HOULE, INC.
 GRADING CONTRACTOR: FEHN COMPANIES, INC.

THESE RECORD PLANS HAVE BEEN PREPARED, IN PART, BASED ON INFORMATION COMPILED AND FURNISHED BY OTHERS. THE ENGINEER HAS NOT VERIFIED THE ACCURACY AND/OR COMPLETENESS OF THE INFORMATION PROVIDED AND SHALL NOT BE RESPONSIBLE FOR ANY ERRORS OR OMISSIONS WHICH HAVE BEEN INCORPORATED INTO THESE RECORD PLANS AS A RESULT.



Summary
 Designed: NRH
 Approved: DS
 Phase: FINAL
 Drawn: JSO/NRH
 Book / Page:
 Initial Issue: 02/10/2017

Revision History

No.	Date	By	Submittal / Revision
02/10/17	NRH	CONSTRUCTION DOCUMENTS	
A	06/16/17	JTA	REVISED PAD ELEVATIONS AND DRIVEWAY LOCATIONS
B	12/01/17	MMQ	RECORD PLANS

Certification
 I hereby certify that this plan, specification or report was prepared by me or under my direct supervision and that I am a duly licensed professional ENGINEER under the laws of the state of Minnesota.

Nathan R. Herman
 Nathan R. Herman
 Registration No. 47982 Date: 02/10/2017
 If applicable, contact us for a wet signed copy of this plan which is available upon request at Sambatek's, Minnetonka, MN office.

Client
 PAXMAR

Project
 MISKE MEADOWS
 PHASE I & PHASE II
 ELK RIVER, MN

Sheet Title
 SANITARY SEWER &
 WATERMAIN PLAN &
 PROFILE

Sheet No. Revision
C6.06 B
 Project No. PAX 20460