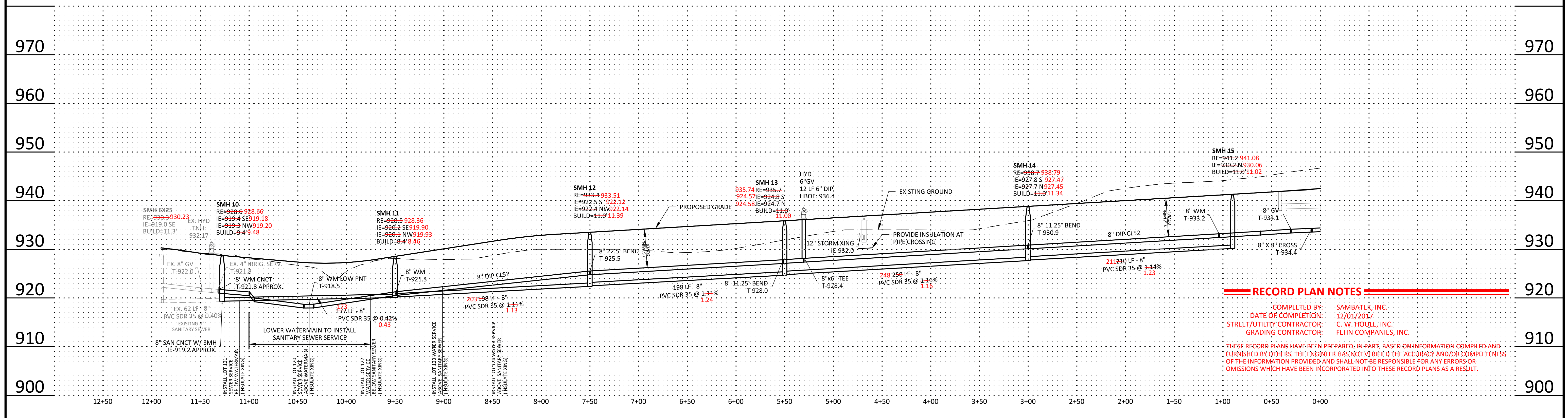


# EDISON STREET NW



### Summary

Designed: NRH  
 Approved: DS  
 Phase: FINAL  
 Drawn: JSO/NRH  
 Book / Page:  
 Initial Issue: 02/10/2017

### Revision History

No.	Date	By	Submittal / Revision
A	06/16/17	JTA	CONSTRUCTION DOCUMENTS
B	12/01/17	MMQ	REVISED PAD ELEVATIONS AND DRIVEWAY LOCATIONS

### Certification

I hereby certify that this plan, specification or report was prepared by me or under my direct supervision and that I am a duly licensed professional ENGINEER under the laws of the state of Minnesota.

*Nathan R. Herman*  
 Registration No. 47982 Date: 02/10/2017  
 If applicable, contact us for a wet signed copy of this plan which is available upon request at Sambatek's, Minnetonka, MN office.

### Client

PAXMAR

### Project

MISKE MEADOWS  
 PHASE I & PHASE II  
 ELK RIVER, MN

### Sheet Title

SANITARY SEWER &  
 WATERMAIN PLAN &  
 PROFILE

### Sheet No. Revision

**C6.05** **B**  
 Project No. PAX 20460