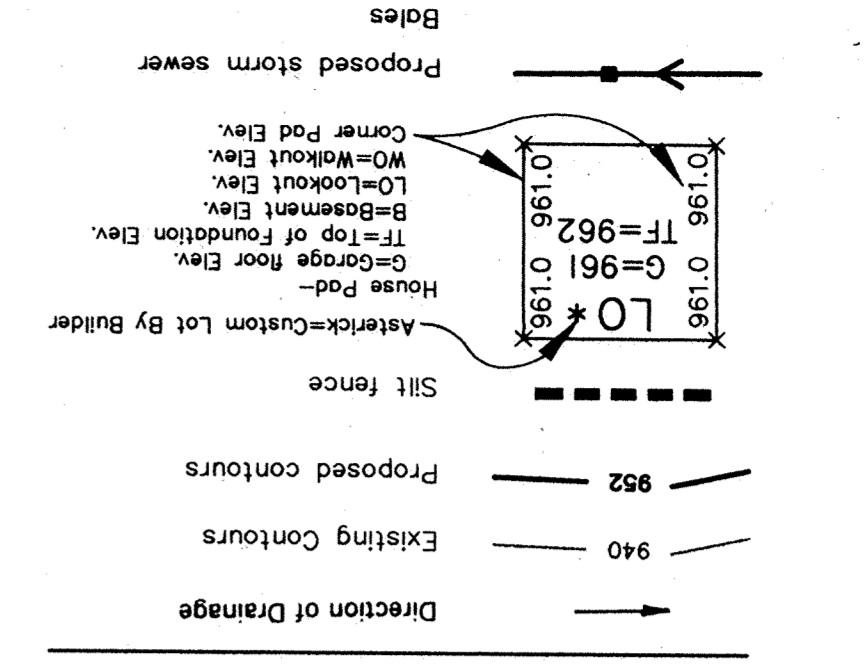
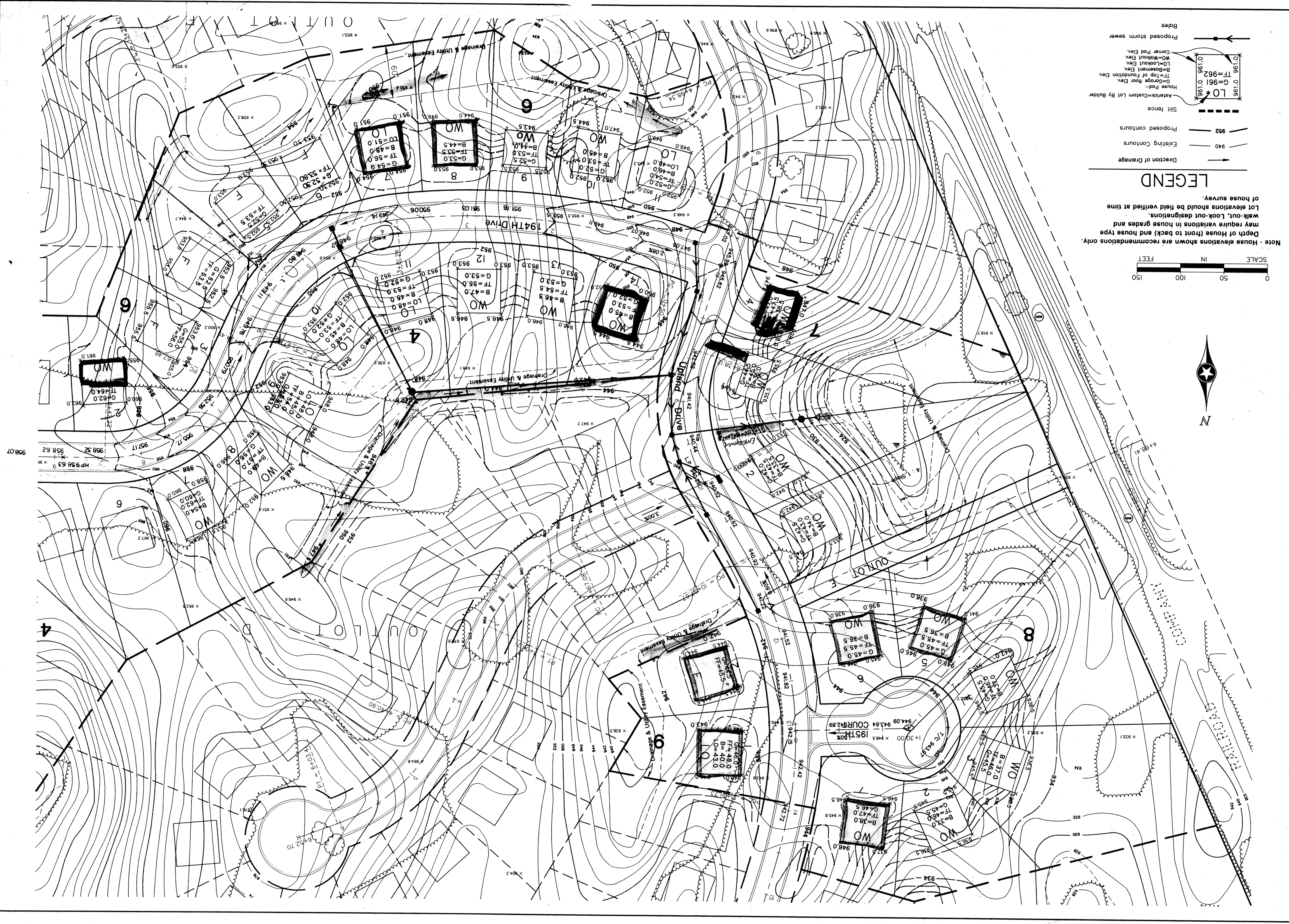
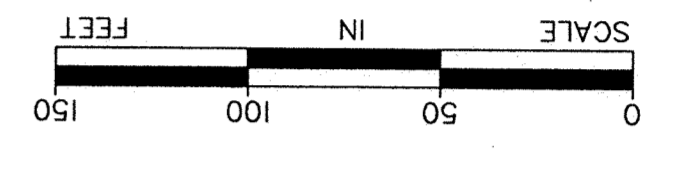


586



**LEGEND**

Note: House elevations shown are recommendations only. Depth of House (front to back) and house type may require variations in house grades and Lot elevations should be field verified at time of house survey.



U7  
SHEET NO. 6

**LAFAYETTE WOODS**  
ELK RIVER, MN  
FOR  
**WINDSOR DEVELOPMENT L.L.P.**  
SITE GRADING & DRAINAGE PLAN

**John Oliver & Associates, Inc.**  
Civil Engineering, Land Surveying, Land Farming  
580 Dodge Avenue  
Elk River, Minnesota  
(612)441-2072 (FAX)441-5885  
201 W. Thurgood Tract, Suite 200  
Burnsville, MN 55337  
(612)894-3045 (FAX)894-3049

I hereby certify that this plan was prepared by me or under my direct supervision and that I am a duly Registered Professional Engineer under the laws of the State of Minnesota.

Signed: Reg. No. 19900  
Date: 1/26/96

REV. NO.	DATE	DESCRIPTION
1	02/19/96	GRADING
2	05/14/96	REVISIONS PER CITY COMMENTS
3	06/24/96	GENERAL REVISIONS

DATE: 01/26/96  
DESIGN BY: JRO/PJG  
DRAWN BY: PG  
CHECKED BY: JB  
DWG FILE: BRA-GR05  
TEXT FILE:  
FILE NO.: 2024.10-03