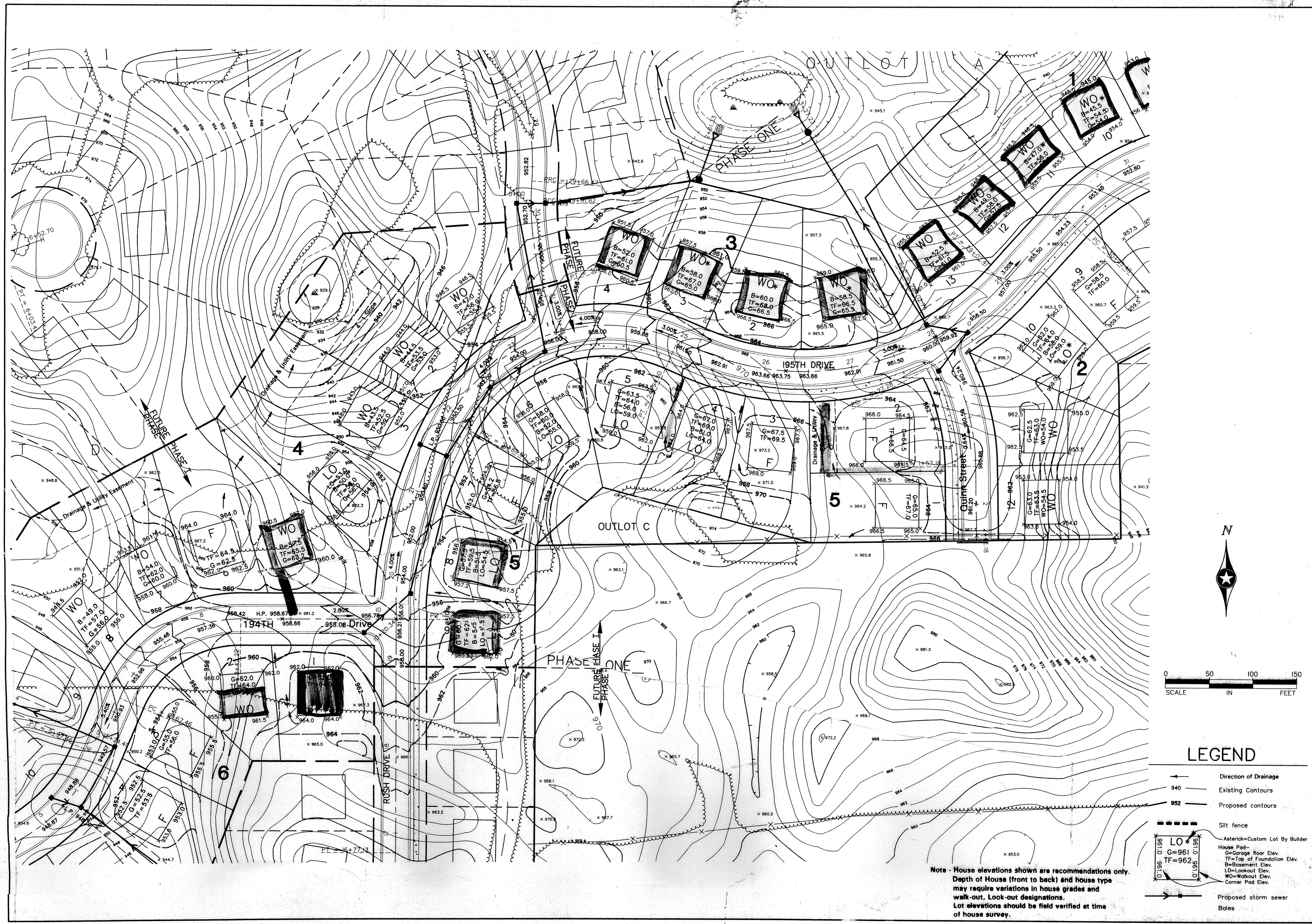


4 of 6



Note - House elevations shown are recommendations only. Depth of House (front to back) and house type may require variations in house grades and walk-out, Look-out designations. Lot elevations should be field verified at time of house survey.

LEGEND

- Direction of Drainage
- Existing Contours
- Proposed contours
- Silt fence
- Asterisk=Custom Lot By Builder
- House Pad
- G=Garage floor Elev.
- TF=Top of Foundation Elev.
- B=Basement Elev.
- LO=Lookout Elev.
- WO=Walkout Elev.
- Corner Pad Elev.
- Proposed storm sewer
- Bales

<p>John Oliver & Associates, Inc. Civil Engineering, Land Surveying, Land Planning 680 Dodge Avenue 216 River, Minnesota (612)441-2072 (FAX)441-5665</p> <p>201 W. Travelers Trail, Suite 200 Burnsville, MN 55337 (612)894-3045 (FAX)894-3049</p>		
DATE:	01/26/96	
DESIGN BY:	JR, PG	
DRAWN BY:	PG	
CHECKED BY:	JB	
DWG FILE:	BRA-GRD1	
TEXT FILE:		
FILE NO.:	7024.10-03	
REV. NO.	DATE	DESCRIPTION
1	02/19/96	GRADING
2	02/19/96	REVISIONS PER CITY COMMENTS
3	06/24/96	GENERAL REVISIONS

LAFAYETTE WOODS
ELK RIVER, MN
FOR
WINDSOR DEVELOPMENT L.P.
SITE GRADING & DRAINAGE PLAN