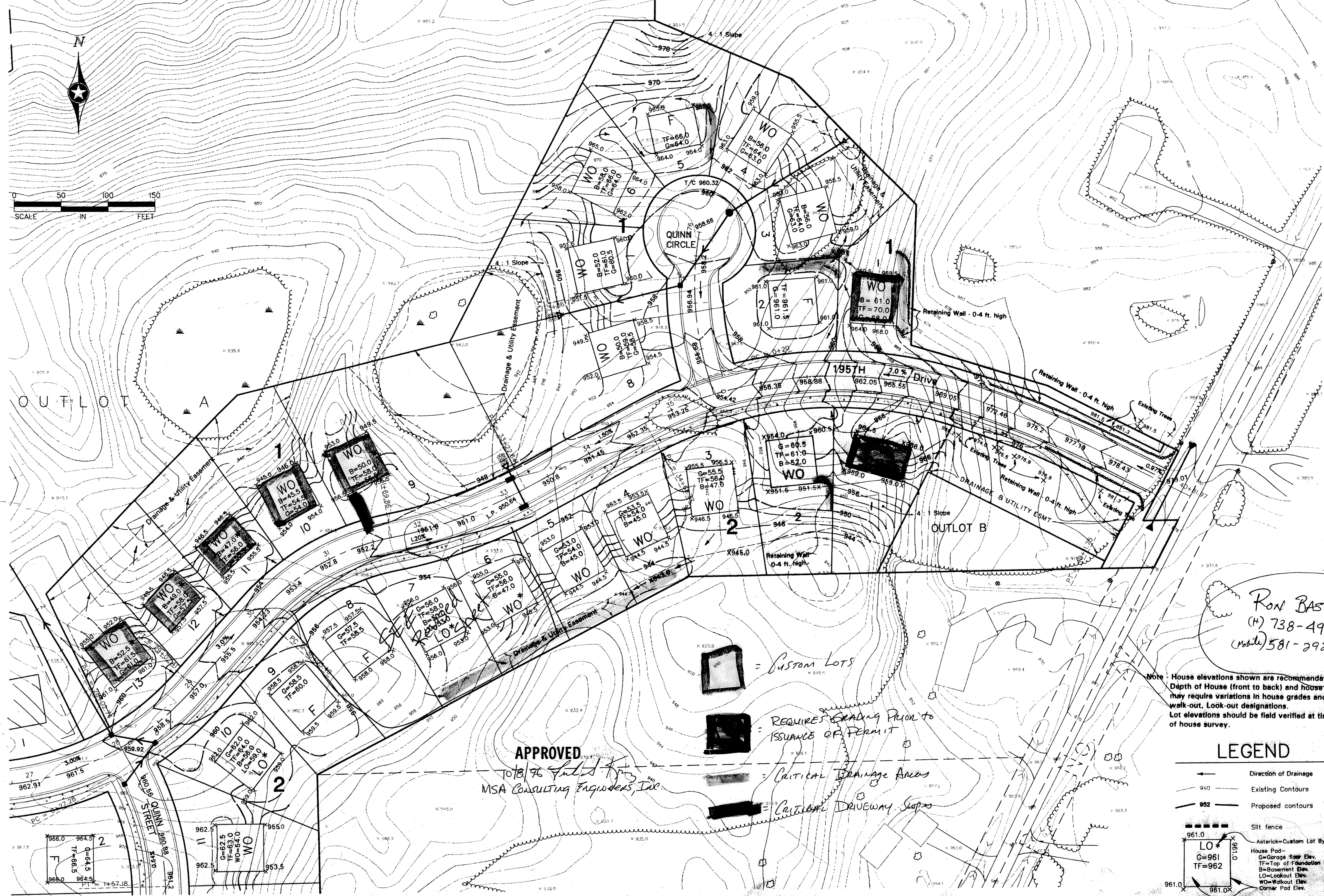
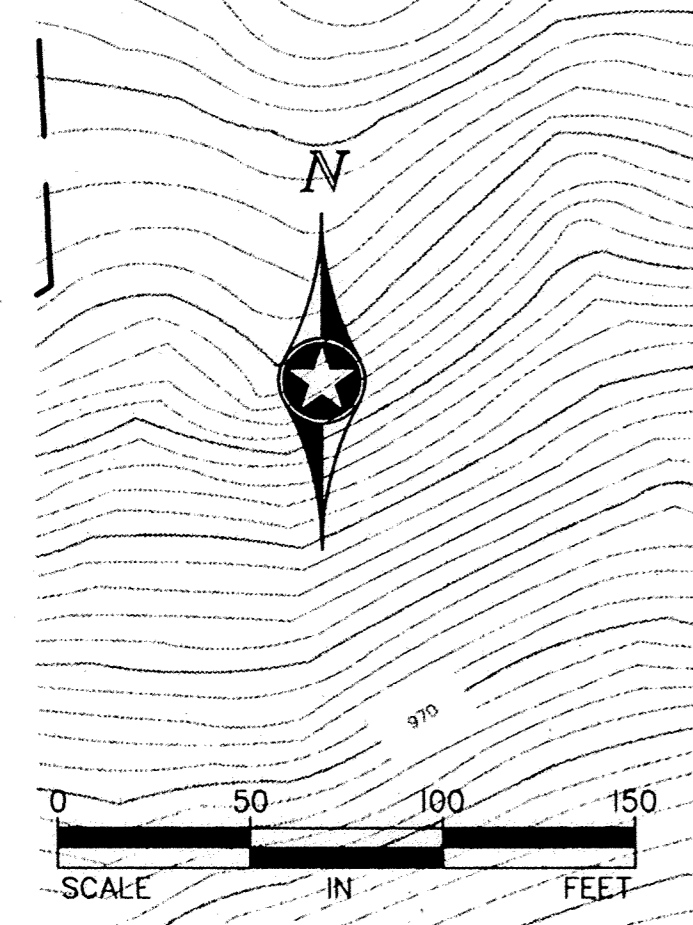


3 of 6



RON BASTYR
(H) 738-4983
(cell) 581-2928

APPROVED
10/18/96
MSA CONSULTING ENGINEERS, INC.

REQUIRES GRADING PRIOR TO
ISSUANCE OF PERMIT

Critical Drainage Areas

Critical Driveway Slopes

Note: House elevations shown are recommendations only. Depth of House (front to back) and house type may require variations in house grades and walk-out. Look-out designations. Lot elevations should be field verified at time of house survey.

LEGEND

- Direction of Drainage
- 940 Existing Contours
- 952 Proposed contours
- Silt fence
- LO* Asterisk=Custom Lot By Builder
- G=961 House Pod
- C=961 Garage floor Elev.
- TF=962 Top of Foundation Elev.
- B=960 Basement Elev.
- LO=961.0 Lookout Elev.
- WO=961.0 Walkout Elev.
- Corner Pod Elev.
- Proposed storm sewer
- Boles

REV. NO.	DATE	DESCRIPTION
1	02/19/96	GRADING
2	05/14/96	REVISIONS PER CITY COMMENTS
3	06/21/96	GENERAL REVISIONS

DATE:	01/26/96
DESIGN BY:	JR/PC
DRAWN BY:	PG
CHECKED BY:	JB
DWG FILE:	BRA-GRD3
TEXT FILE:	7024.10-03
FILE NO.:	19900

I hereby certify that this plan was prepared by me or under my direct supervision and that I am a duly registered professional engineer in the State of Minnesota.

Signed: *[Signature]* Date: 1/26/96

John Oliver & Associates, Inc.
Civil Engineering, Land Surveying, Land Planning
500 Dodge Avenue
Elk River, Minnesota
(612) 441-2072 (FAX) 441-6665
201 W. Traverlers Trail, Suite 200
Burnsville, MN 55337
(612) 894-3046 (FAX) 894-3049

LAFAYETTE WOODS
ELK RIVER, MN
FOR
WINDSOR DEVELOPMENT L.L.P.
SITE GRADING & DRAINAGE PLAN

SHEET NO. 3 OF 6