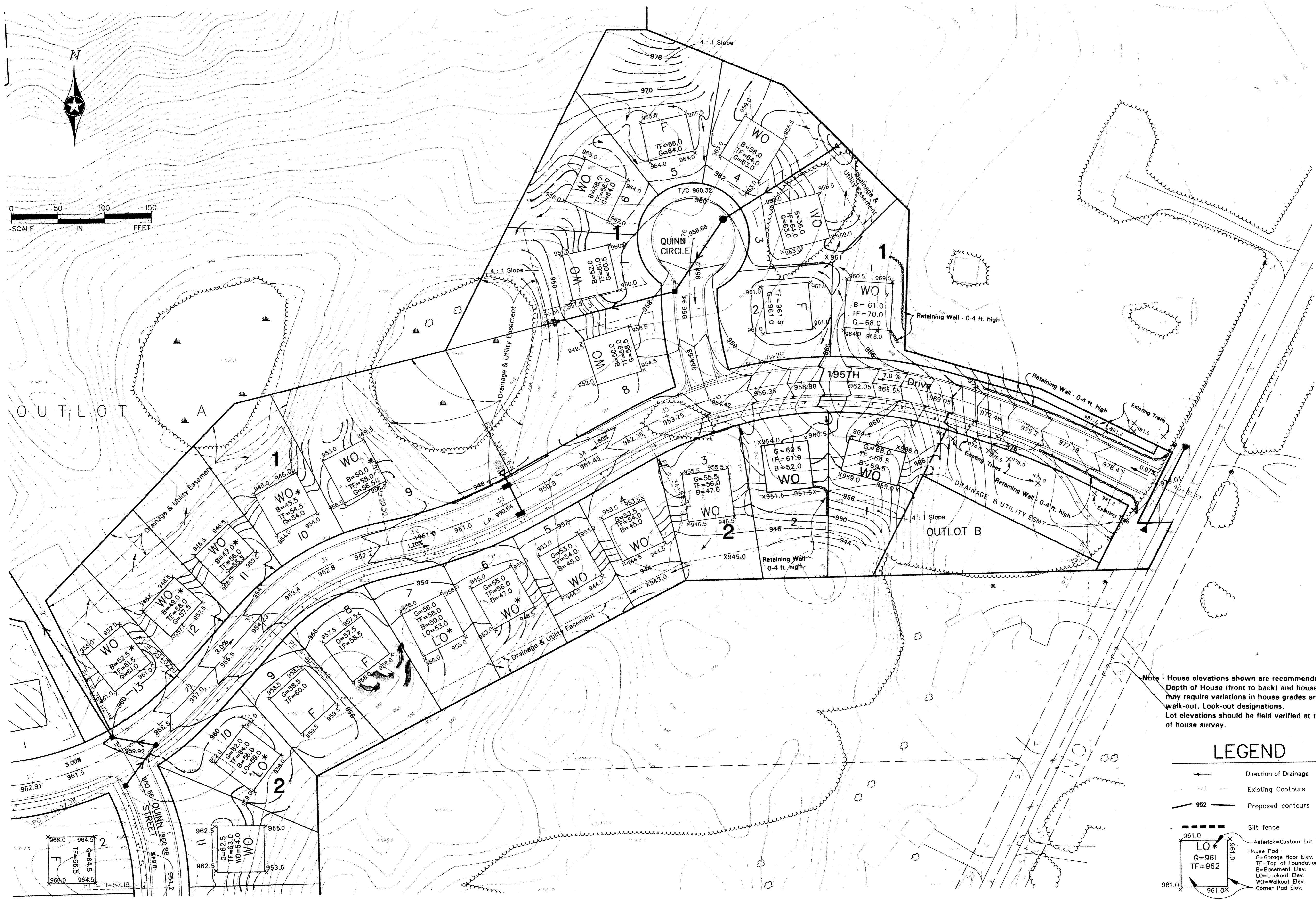
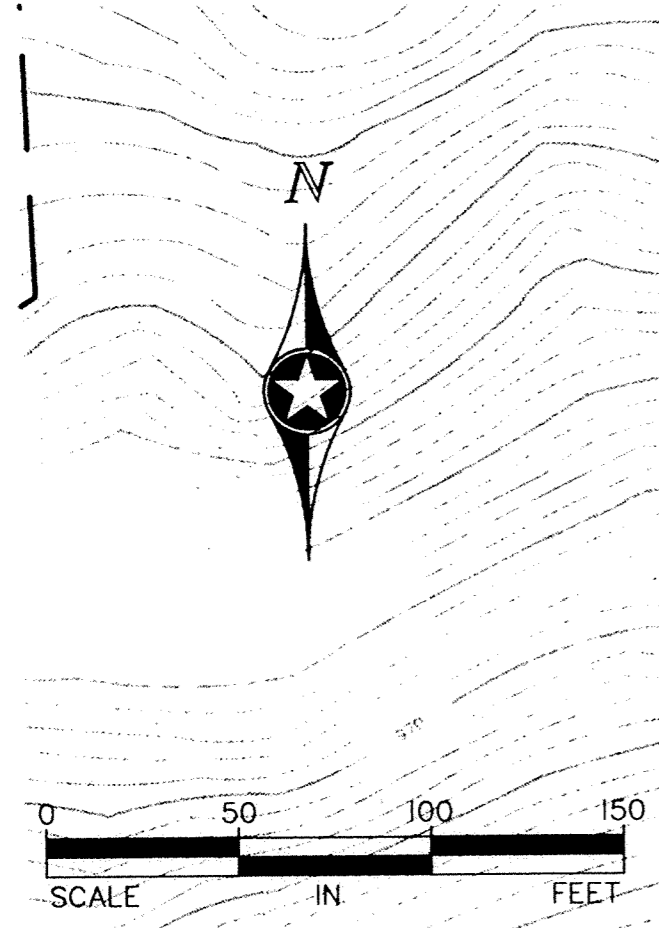


3 of 6



Note - House elevations shown are recommendations only. Depth of House (front to back) and house type may require variations in house grades and walk-out. Look-out designations. Lot elevations should be field verified at time of house survey.

LEGEND

- Direction of Drainage
- Existing Contours
- Proposed contours
- Silt fence
- Asterisk=Custom Lot by Builder
- House Pad
G=Garage floor Elev.
TF=Top of Foundation Elev.
B=Basement Elev.
LO=Lookout Elev.
WO=Walkout Elev.
Corner Pad Elev.
- Proposed storm sewer
- Boles

REV. NO.	DATE	DESCRIPTION
1	02/19/96	GRADING
2	05/14/96	REVISIONS PER CITY COMMENTS
3	06/21/96	GENERAL REVISIONS

DATE: 01/26/96
 DESIGN BY: JRP/PG
 DRAWN BY: PG
 CHECKED BY: JB
 DWG FILE: BRA-GRD3
 TEXT FILE: FILE NO.: 2024-10-03

I hereby certify that this plan was prepared by me or under my direct supervision and that I am a duly registered Professional Engineer in the State of Minnesota.
 Signed: _____ Date: 1/26/96 Reg. No. 19800

John Oliver & Associates, Inc.
 Civil Engineering, Land Surveying, Land Planning
 580 Dodge Avenue
 Elk River, Minnesota
 (612)441-2072 (FAX)441-5665

LAFAYETTE WOODS
 ELK RIVER, MN
 FOR
WINDSOR DEVELOPMENT L.L.P.
 SITE GRADING & DRAINAGE PLAN

SHEET NO. 3 OF 6