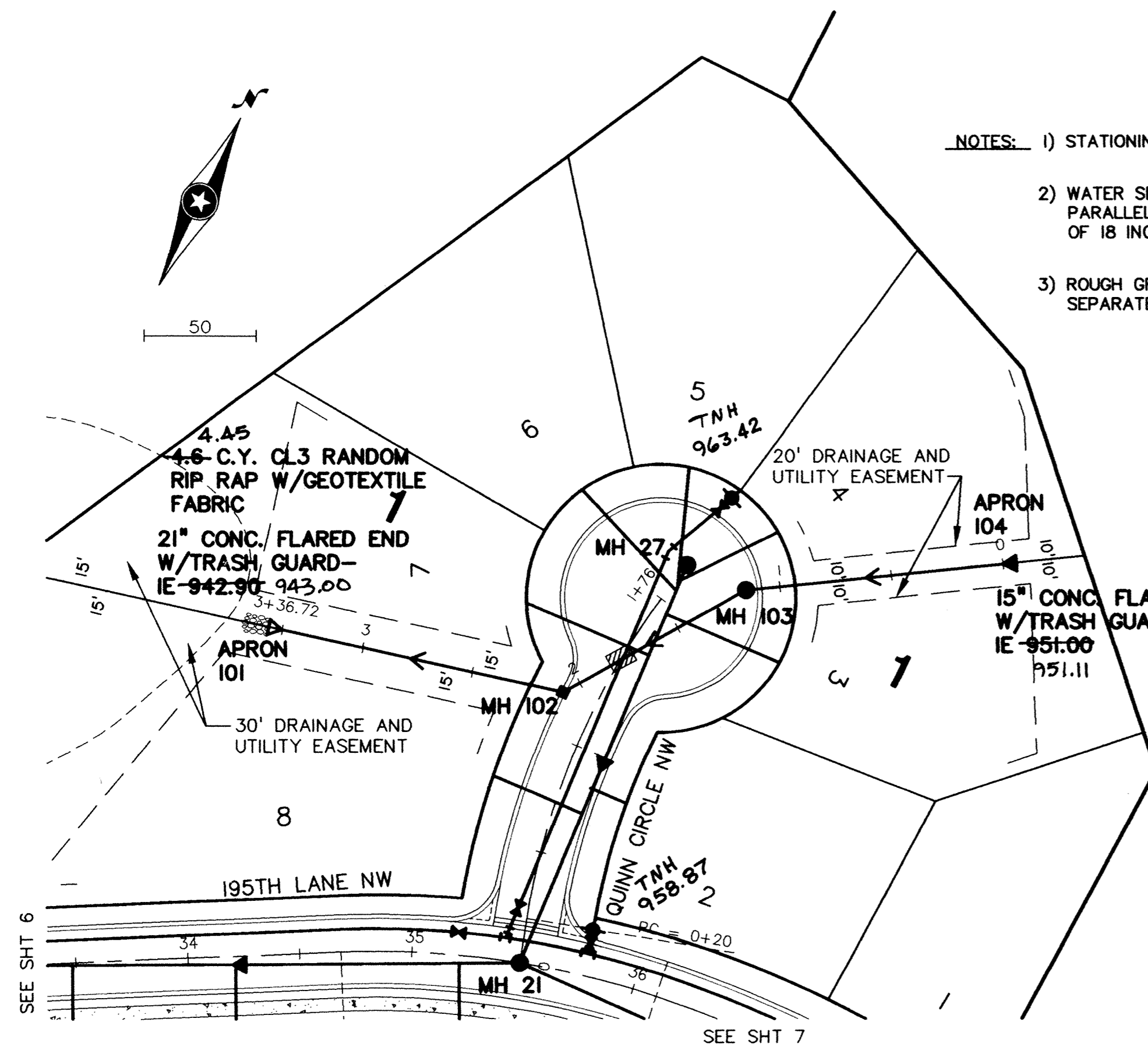


# STORM SEWER

# STORM SEWER

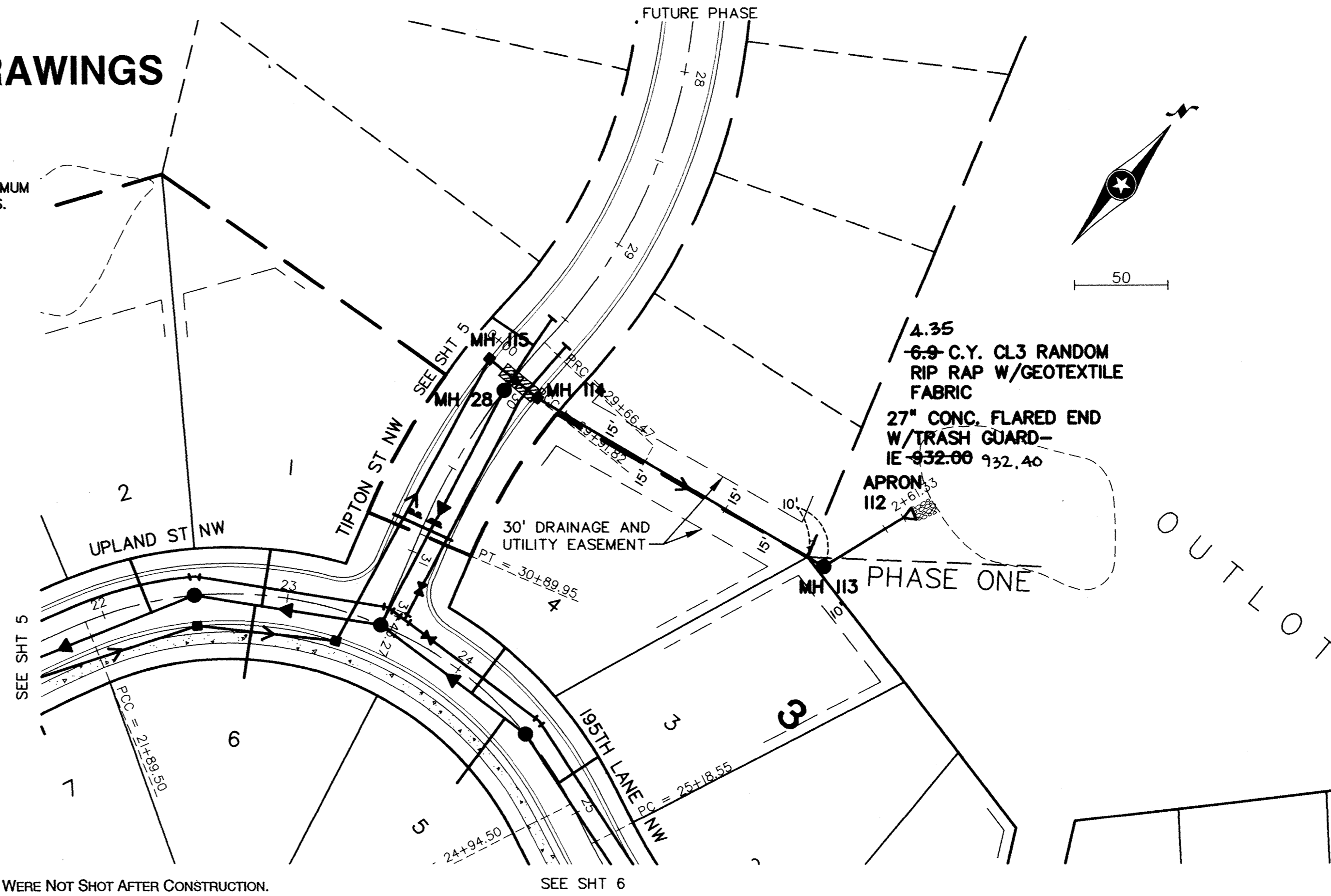
## RECORD DRAWINGS



- NOTES:**
- 1) STATIONING REFERS TO STREET CENTERLINE.
  - 2) WATER SERVICES MAY BE INSTALLED IN THE SAME TRENCH PARALLEL WITH THE SANITARY SERVICES ON A BENCH A MINIMUM OF 18 INCHES ABOVE THE TOP OF SANITARY SEWER SERVICES.
  - 3) ROUGH GRADING TO FUTURE SUBGRADE TO BE PROVIDED BY SEPARATE CONTRACT.

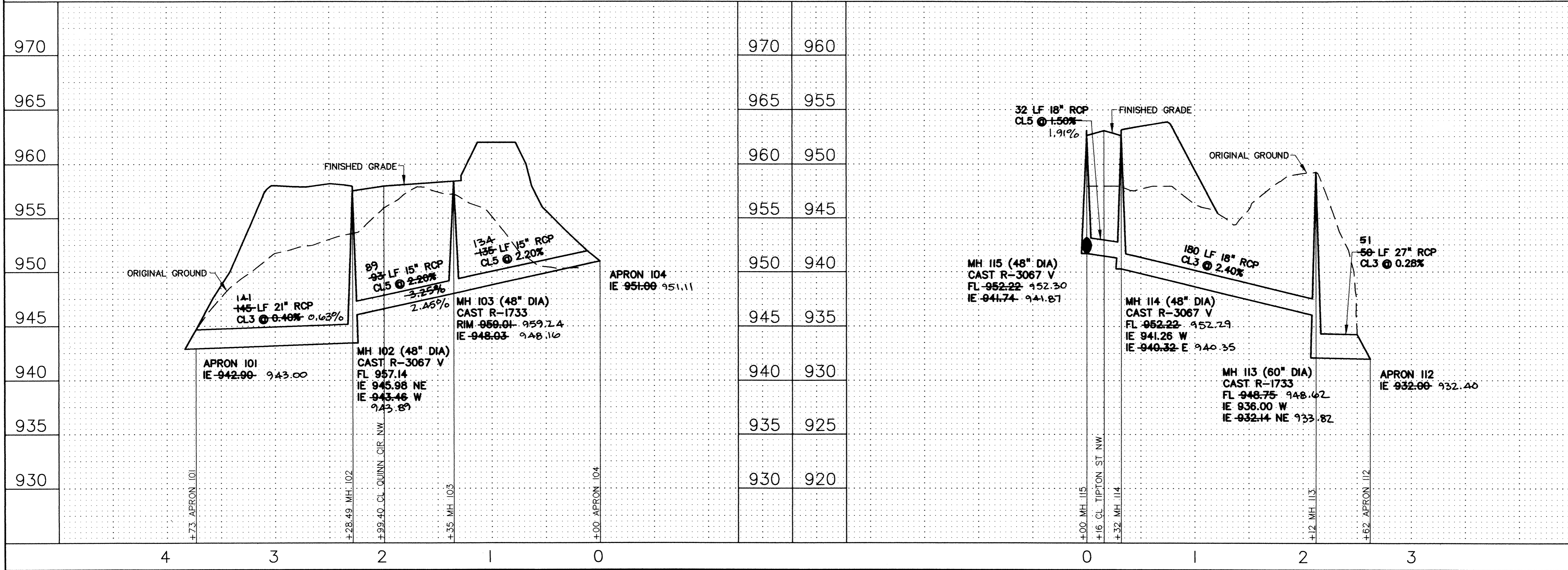
PRIME CONTRACTOR/UTILITIES: C.W. HOULE, INC.  
CURB & GUTTER: HALVORSON CURB CO.  
STREETS: BAUERLY BROS., INC.

INSPECTION: RALPH BADER, HOWARD R. GREEN CO.  
SURVEY: JOHN OLIVER & ASSOCIATES, INC.  
EARTHWORK: DENNIS FEHN EXCAVATING, INC.  
RECORD DRAWINGS: BRYAN CLICHE, JOA  
CONSTRUCTED: 1996



☐ DENOTES INSULATION

NOTE: CENTERLINE STREET ELEVATIONS WERE NOT SHOT AFTER CONSTRUCTION.



REV. NO.	DATE	DESCRIPTION
1	05/14/96	EXPANDED PHASE 1 REVISIONS
2	06/05/96	MINOR REVISIONS, STREET NAMES
3	06/25/96	GENERAL REVISIONS, CITY COMMENTS
4	11/14/97	RECORD PLANS

DATE: 04/30/96  
DESIGN BY: JB  
DRAWN BY: BG  
CHECKED BY: JB  
DWG FILE: 10-STRM  
TEXT FILE: NONE  
FILE NO.: 7024.10-03

I hereby certify that this plan was prepared by me or under my direct supervision and that I am a duly Registered Professional Engineer under the laws of the State of Minnesota.

Signed: *[Signature]* Reg. No. 19900  
Date: 04/30/96

**John Oliver & Associates, Inc.**  
Civil Engineering, Land Surveying, Land Planning  
680 Dodge Avenue  
Elk River, Minnesota 55330  
(612)441-2072 (FAX)441-5665

**LAFAYETTE WOODS**  
ELK RIVER, MN  
WINDSOR DEVELOPMENT L.L.P.  
SANITARY SEWER, WATERMAIN,  
STORM SEWER AND STREET PLAN  
STORM SEWER

SHEET NO. 10 OF 15