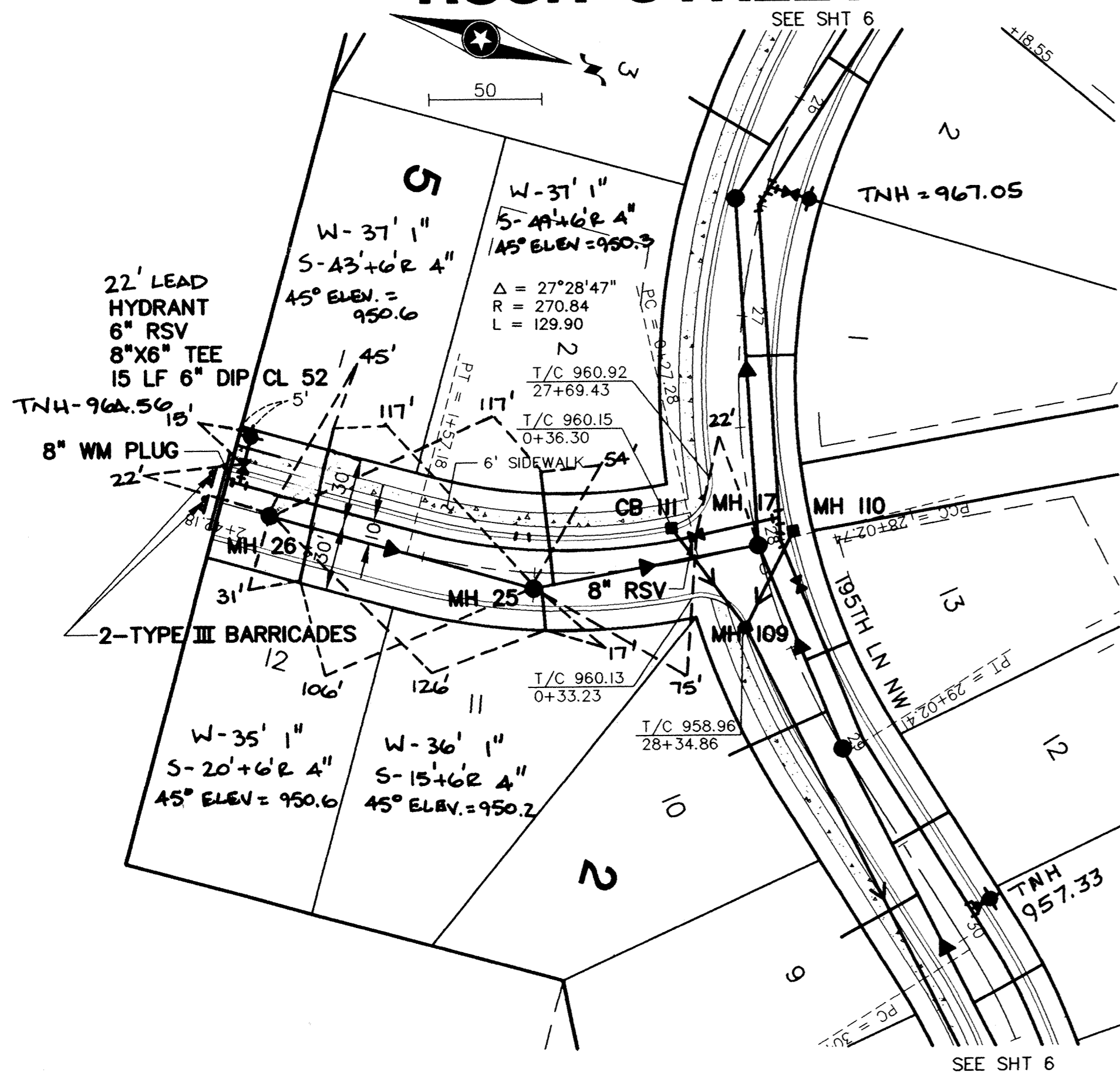


RUSH STREET NW

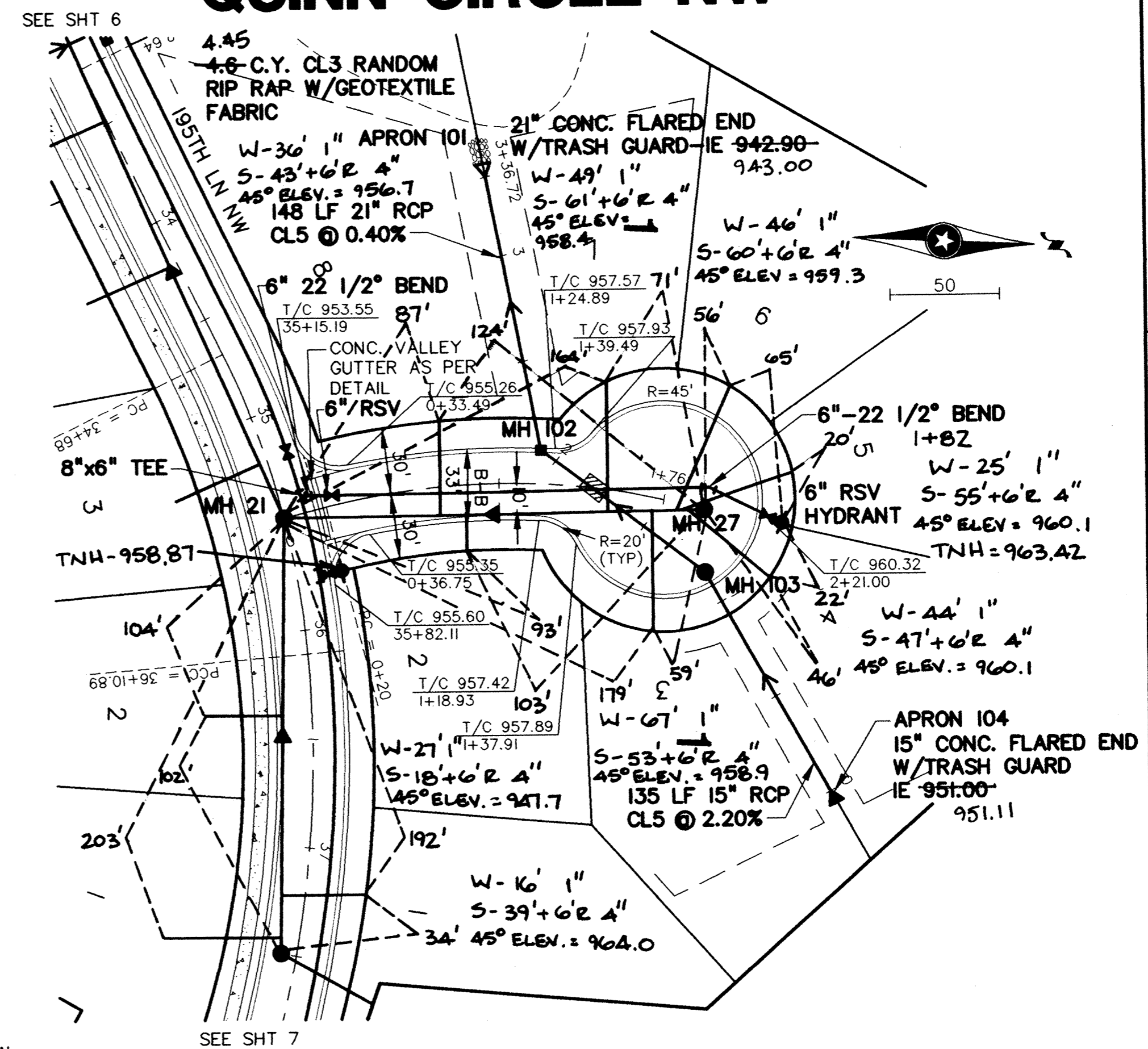


RECORD DRAWINGS

- NOTES:
- 1) STATIONING REFERS TO STREET CENTERLINE.
 - 2) DIMENSIONS TO BACK OF CURB UNLESS OTHERWISE NOTED.
 - 3) TOP OF CURB ELEVATIONS ARE TO MOUNTABLE CURB SECTION.
 - 4) INSTALL B618 CONCRETE CURB AND GUTTER AT CURB RETURNS. TRANSITION TO MOUNTABLE IN 5 FEET BEYOND CURB PC.
 - 5) WATER SERVICES MAY BE INSTALLED IN THE SAME TRENCH PARALLEL WITH THE SANITARY SERVICES ON A BENCH A MINIMUM OF 18 INCHES ABOVE THE TOP OF SANITARY SEWER SERVICES.

▨ DENOTES INSULATION
NOTE: CENTERLINE STREET ELEVATIONS WERE NOT SHOT AFTER CONSTRUCTION.

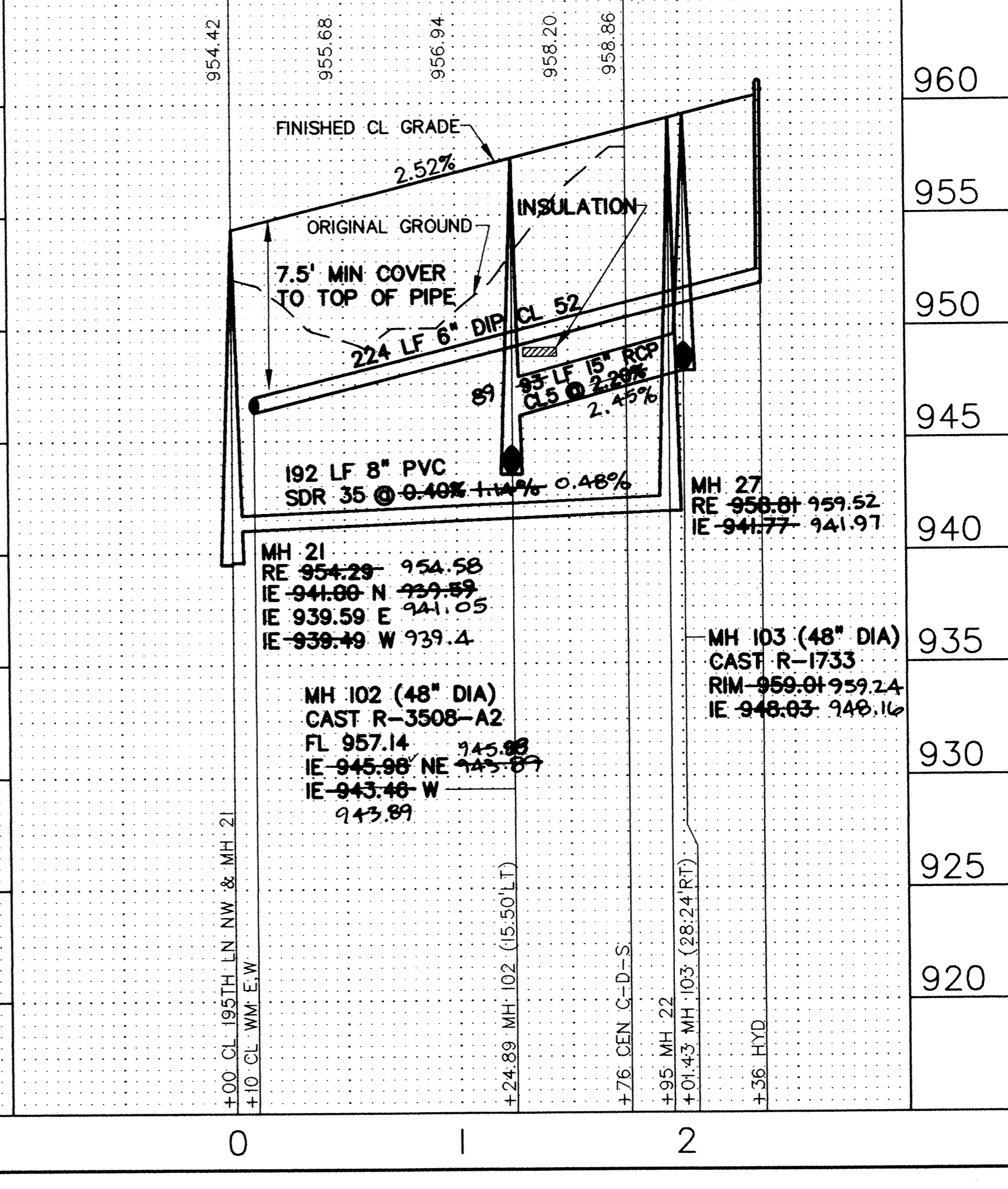
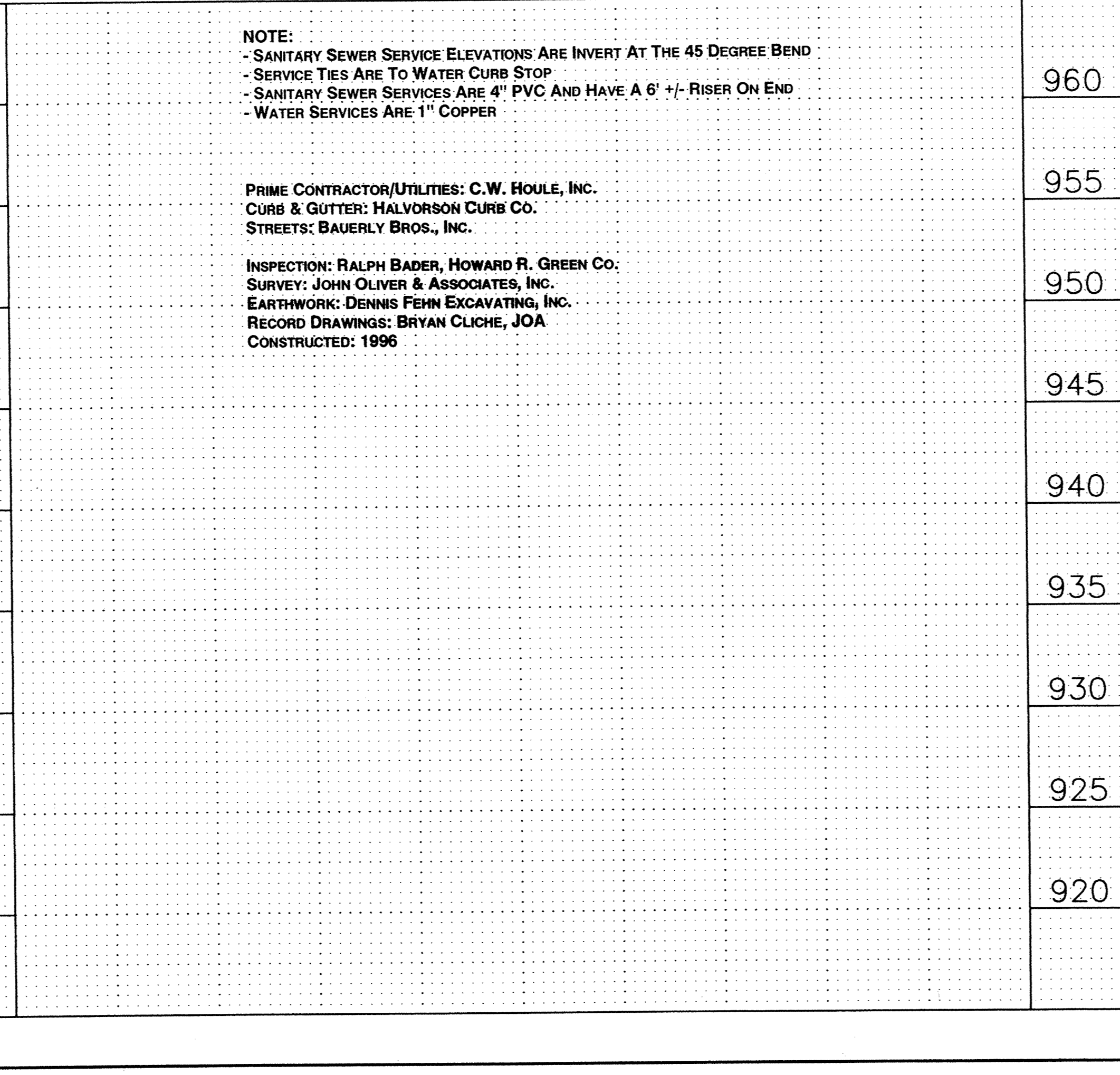
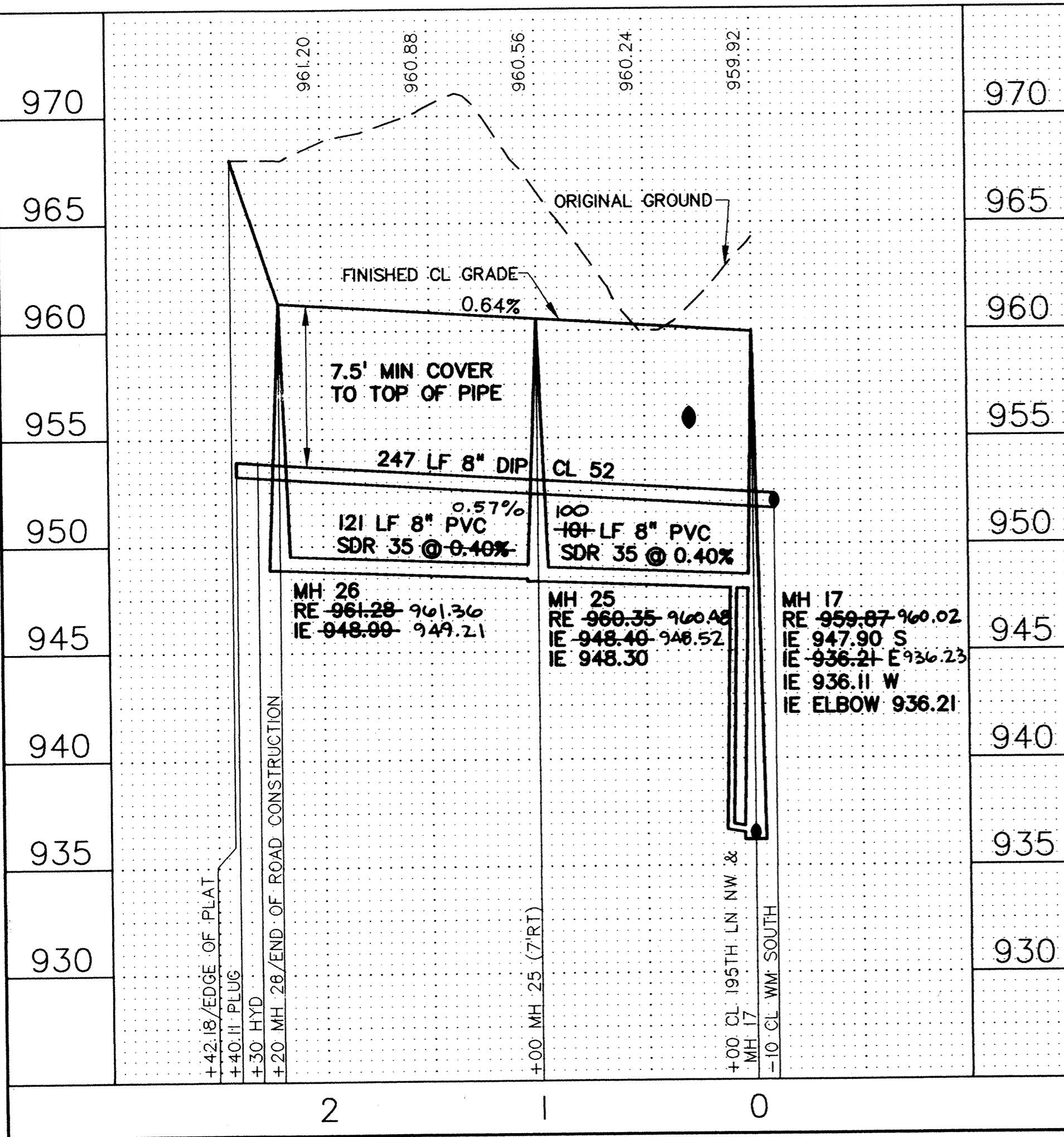
QUINN CIRCLE NW



- NOTE:
- SANITARY SEWER SERVICE ELEVATIONS ARE INVERT AT THE 45 DEGREE BEND
 - SERVICE TIES ARE TO WATER CURB STOP
 - SANITARY SEWER SERVICES ARE 4" PVC AND HAVE A 6" +/- RISER ON END
 - WATER SERVICES ARE 1" COPPER

PRIME CONTRACTOR/UTILITIES: C.W. HOULE, INC.
CURB & GUTTER: HALVORSON CURB CO.
STREETS: BAUERLY BROS., INC.

INSPECTION: RALPH BADER, HOWARD R. GREEN CO.
SURVEY: JOHN OLIVER & ASSOCIATES, INC.
EARTHWORK: DENNIS FEHN EXCAVATING, INC.
RECORD DRAWINGS: BRYAN CLICHE, JOA
CONSTRUCTED: 1996



REV. NO.	DATE	DESCRIPTION
1	05/14/96	EXPANDED PHASE I REVISIONS
2	06/05/96	MINOR REVISIONS, STREET NAMES
3	06/25/96	GENERAL REVISIONS, CITY COMMENTS
4	11/14/97	RECORD PLANS

DATE: 04/30/96
DESIGN BY: JB
DRAWN BY: BG
CHECKED BY: JB
DWG FILE: 8-QUINN
TEXT FILE: NONE
FILE NO.: 7024.10-03

I hereby certify that this plan was prepared by me or under my direct supervision and that I am a duly Registered Professional Engineer under the laws of the State of Minnesota.
Signed: [Signature]
Date: 04/30/96 Reg. No. 19900

John Oliver & Associates, Inc.
Civil Engineering, Land Surveying, Land Planning
580 Dodge Avenue
Elk River, Minnesota 55330
(612)441-2072 (FAX)441-5666

LAFAYETTE WOODS
LAFAYETTE WOODS
ELK RIVER, MN
WINDSOR DEVELOPMENT L.L.P.
SANITARY SEWER, WATERMAIN,
STORM SEWER AND STREET PLAN
RUSH ST NW AND QUINN CIRCLE NW

SHEET NO. 8 OF 15