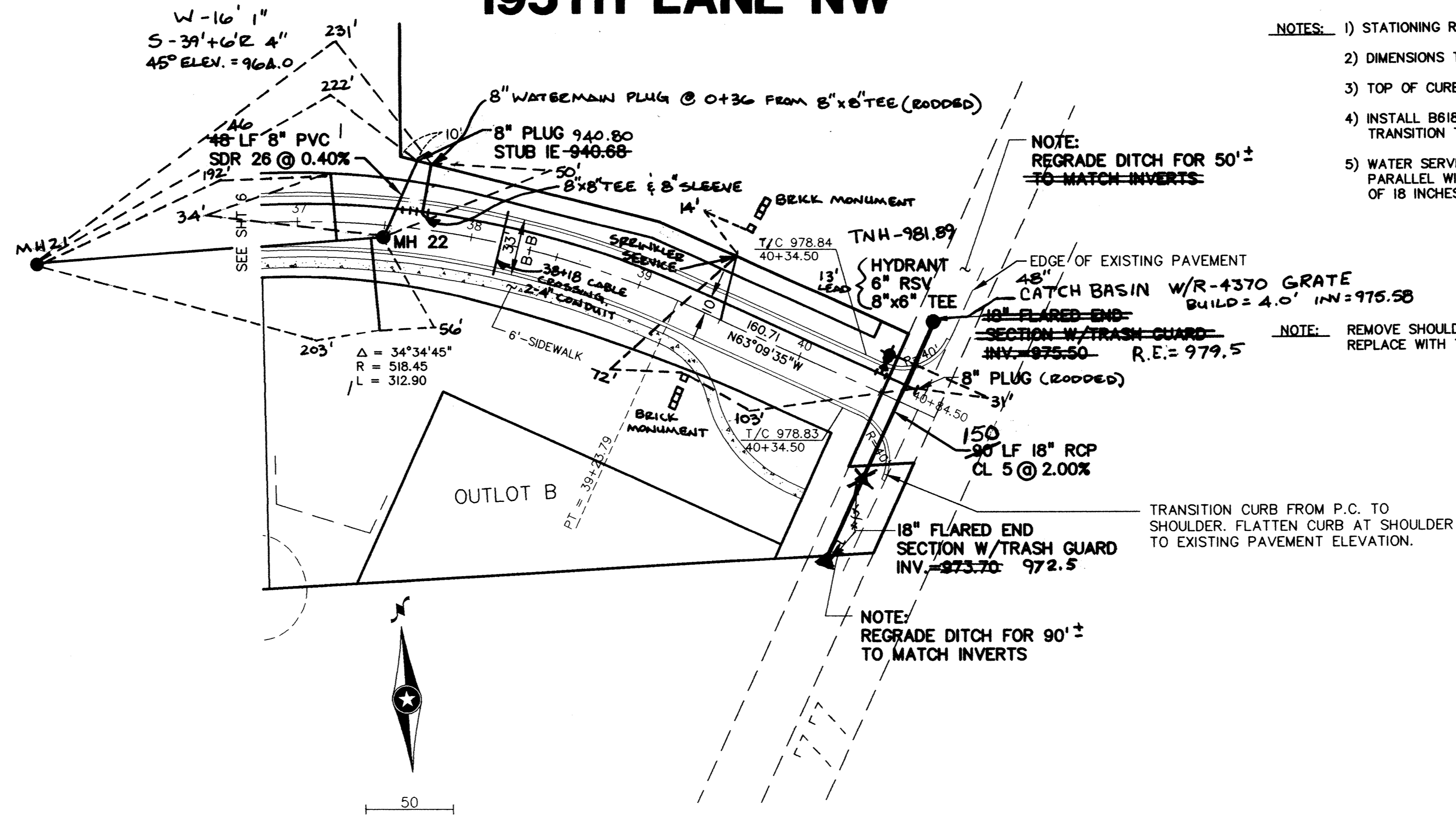


# 195TH LANE NW

## RECORD DRAWINGS

- NOTES:**
- 1) STATIONING REFERS TO STREET CENTERLINE.
  - 2) DIMENSIONS TO BACK OF CURB UNLESS OTHERWISE NOTED.
  - 3) TOP OF CURB ELEVATIONS ARE TO MOUNTABLE CURB SECTION.
  - 4) INSTALL B618 CONCRETE CURB AND GUTTER AT CURB RETURNS. TRANSITION TO MOUNTABLE IN 5 FEET BEYOND CURB PC.
  - 5) WATER SERVICES MAY BE INSTALLED IN THE SAME TRENCH PARALLEL WITH THE SANITARY SERVICES ON A BENCH A MINIMUM OF 18 INCHES ABOVE THE TOP OF SANITARY SEWER SERVICES.

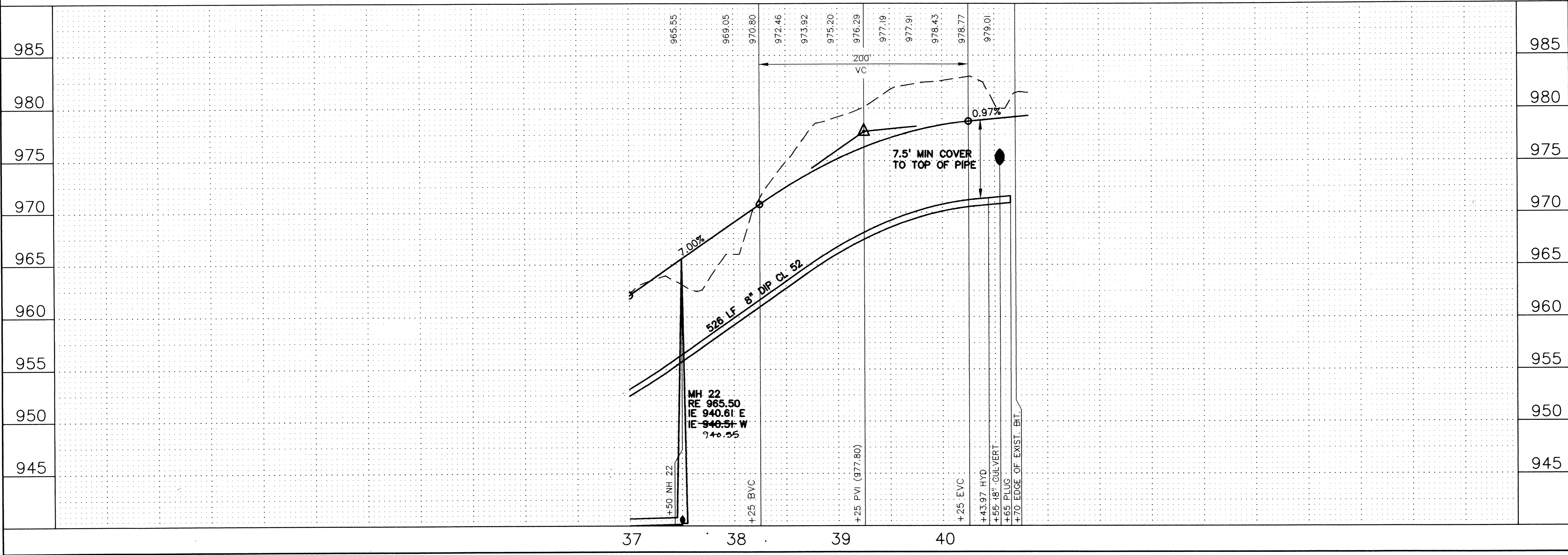


PRIME CONTRACTOR/UTILITIES: C.W. HOULE, INC.  
CURB & GUTTER: HALVORSON CURB CO.  
STREETS: BAUERLY BROS., INC.

INSPECTION: RALPH BADER, HOWARD R. GREEN CO.  
SURVEY: JOHN OLIVER & ASSOCIATES, INC.  
EARTHWORK: DENNIS FEHN EXCAVATING, INC.  
RECORD DRAWINGS: BRYAN CLICHE, JOA  
CONSTRUCTED: 1996

- NOTE:**
- SANITARY SEWER SERVICE ELEVATIONS ARE INVERT AT THE 45 DEGREE BEND
  - SERVICE TIES ARE TO WATER CURB STOP
  - SANITARY SEWER SERVICES ARE 4" PVC AND HAVE A 6' +/- RISER ON END
  - WATER SERVICES ARE 1" COPPER

NOTE: CENTERLINE STREET ELEVATIONS WERE NOT SHOT AFTER CONSTRUCTION.



**John Oliver & Associates, Inc.**  
Civil Engineering, Land Surveying, Land Planning  
680 Dodge Avenue  
Elk River, Minnesota 55330  
(612)441-2072 (FAX)441-5665  
201 W. Travelers Trail, Suite 200  
Burnsville, MN 55337  
(612)894-3045 (FAX)894-3049

**LAFAYETTE WOODS**  
ELK RIVER, MN  
WINDSOR DEVELOPMENT L.L.P.  
SANITARY SEWER, WATERMAIN,  
STORM SEWER AND STREET PLAN  
195TH LANE NW 2

SHEET NO.  
7 OF 15