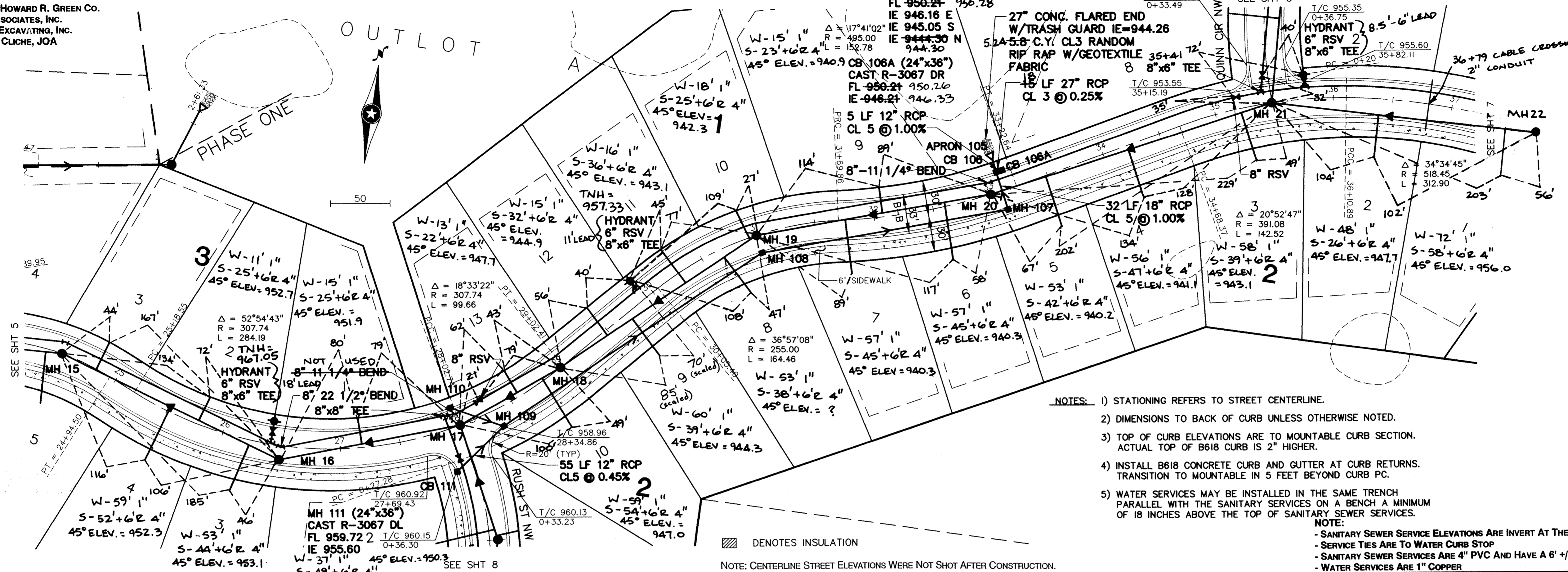


PRIME CONTRACTOR/UTILITIES: C.W. HOULE, INC.
CURB & GUTTER: HALVORSON CURB CO.
STREETS: BAUERLY BROS., INC.

INSPECTION: RALPH BADER, HOWARD R. GREEN CO.
SURVEY: JOHN OLIVER & ASSOCIATES, INC.
EARTHWORK: DENNIS FEHN EXCAVATING, INC.
RECORD DRAWINGS: BRYAN CLICHE, JOA
CONSTRUCTED: 1996

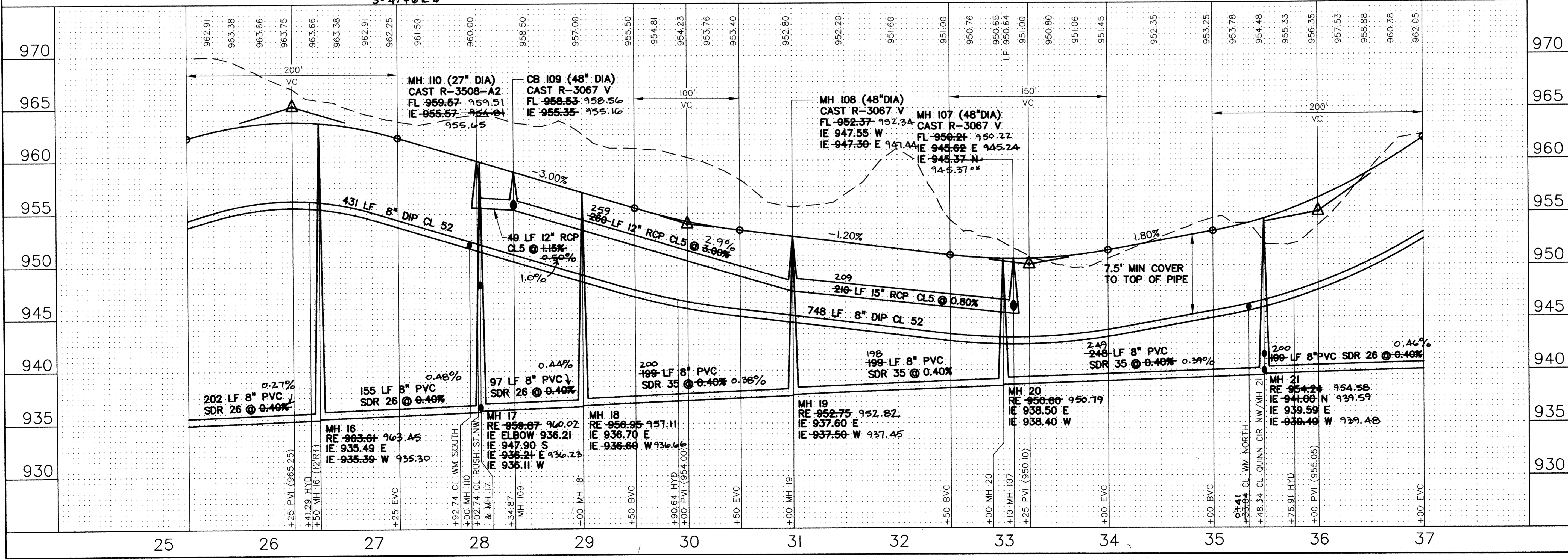
195TH LANE NW

RECORD DRAWINGS



- NOTES:**
- 1) STATIONING REFERS TO STREET CENTERLINE.
 - 2) DIMENSIONS TO BACK OF CURB UNLESS OTHERWISE NOTED.
 - 3) TOP OF CURB ELEVATIONS ARE TO MOUNTABLE CURB SECTION. ACTUAL TOP OF B618 CURB IS 2" HIGHER.
 - 4) INSTALL B618 CONCRETE CURB AND GUTTER AT CURB RETURNS. TRANSITION TO MOUNTABLE IN 5 FEET BEYOND CURB PC.
 - 5) WATER SERVICES MAY BE INSTALLED IN THE SAME TRENCH PARALLEL WITH THE SANITARY SERVICES ON A BENCH A MINIMUM OF 18 INCHES ABOVE THE TOP OF SANITARY SEWER SERVICES.
- NOTE:**
- SANITARY SEWER SERVICE ELEVATIONS ARE INVERT AT THE 45 DEGREE BEND
 - SERVICE TIES ARE TO WATER CURB STOP
 - SANITARY SEWER SERVICES ARE 4" PVC AND HAVE A 6' +/- RISER ON END
 - WATER SERVICES ARE 1" COPPER

□ DENOTES INSULATION
NOTE: CENTERLINE STREET ELEVATIONS WERE NOT SHOT AFTER CONSTRUCTION.



REV. NO.	DATE	DESCRIPTION
1	05/14/96	EXPANDED PHASE 1 REVISIONS
2	06/05/96	MINOR REVISIONS, CITY NAMES
3	06/25/96	GENERAL REVISIONS, CITY COMMENTS
4	11/19/97	RECORD PLANS

DATE:	04/30/96
DESIGN BY:	JB
DRAWN BY:	BG
CHECKED BY:	JB
DWG. FILE:	6-195TH
TEXT FILE:	NONE
FILE NO.:	7024.10-03

I hereby certify that this plan was prepared by me or under my direct supervision and that I am a duly Registered Professional Engineer under the laws of the State of Minnesota.

Signed: *[Signature]* Reg. No. 19990
Date: 04/26/96

John Oliver & Associates, Inc.
Civil Engineering, Land Surveying, Land Planning
580 Dodge Avenue
Elk River, Minnesota 55330
(612)441-2072 (FAX)441-5665

LAFAYETTE WOODS
ELK RIVER, MN
WINDSOR DEVELOPMENT L.L.P.
SANITARY SEWER, WATERMAIN,
STORM SEWER AND STREET PLAN
195TH LANE NW 1

SHEET NO. 6 OF 15