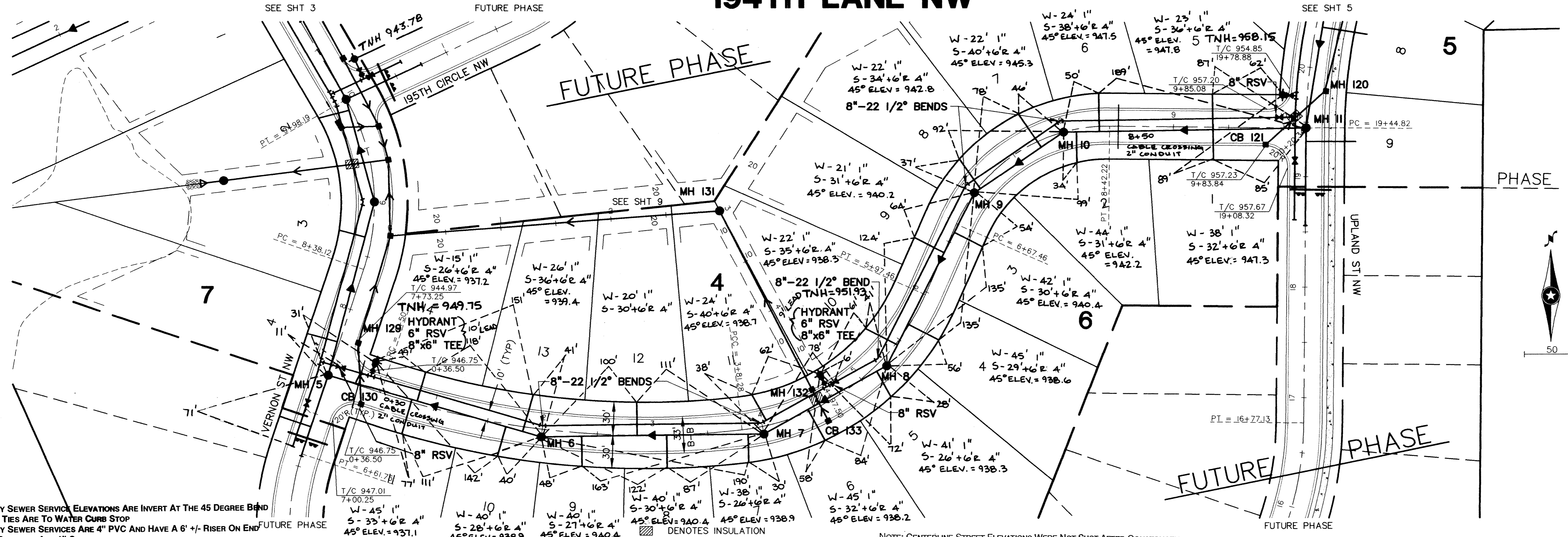


194TH LANE NW

RECORD DRAWINGS



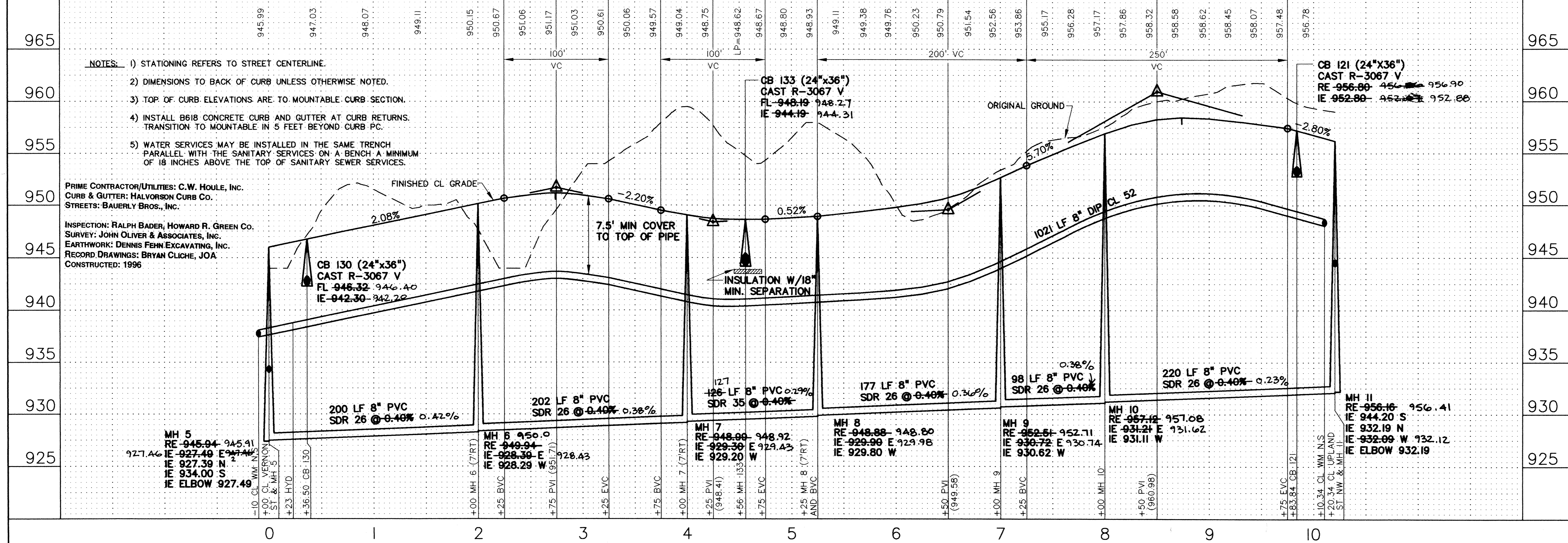
NOTE:
 - SANITARY SEWER SERVICE ELEVATIONS ARE INVERT AT THE 45 DEGREE BEND
 - SERVICE TIES ARE TO WATER CURB STOP
 - SANITARY SEWER SERVICES ARE 4" PVC AND HAVE A 6' +/- RISER ON END
 - WATER SERVICES ARE 1" COPPER

NOTE: CENTERLINE STREET ELEVATIONS WERE NOT SHOT AFTER CONSTRUCTION.

REV. NO.	DATE	DESCRIPTION
1	05/14/96	EXPANDED PHASE 1 REVISIONS
2	06/05/96	MINOR REVISIONS, STREET NAMES
3	06/25/96	GENERAL REVISIONS, CITY COMMENTS
4	11/4/97	RECORDED PLANS

DATE: 04/30/96
 DESIGN BY: JB
 DRAWN BY: BG
 CHECKED BY: JB
 DWG FILE: 4-194TH
 TEXT FILE: NONE
 FILE NO.: 7024.10-03

I hereby certify that this plan was prepared by me or under my direct supervision and that I am a duly Registered Professional Engineer under the laws of the State of Minnesota.
 Signed: [Signature]
 Date: 04/30/96 Reg. No. 19900



- NOTES:**
- STATIONING REFERS TO STREET CENTERLINE.
 - DIMENSIONS TO BACK OF CURB UNLESS OTHERWISE NOTED.
 - TOP OF CURB ELEVATIONS ARE TO MOUNTABLE CURB SECTION.
 - INSTALL 6x6 CONCRETE CURB AND GUTTER AT CURB RETURNS. TRANSITION TO MOUNTABLE IN 5 FEET BEYOND CURB PC.
 - WATER SERVICES MAY BE INSTALLED IN THE SAME TRENCH PARALLEL WITH THE SANITARY SERVICES ON A BENCH A MINIMUM OF 18 INCHES ABOVE THE TOP OF SANITARY SEWER SERVICES.

PRIME CONTRACTOR/UTILITIES: C.W. HOULE, INC.
 CURB & GUTTER: HALVORSON CURB CO.
 STREETS: BAUERLY BROS., INC.

INSPECTION: RALPH BADER, HOWARD R. GREEN CO.
 SURVEY: JOHN OLIVER & ASSOCIATES, INC.
 EARTHWORK: DENNIS FEHN EXCAVATING, INC.
 RECORD DRAWINGS: BRYAN CLICHE, JOA
 CONSTRUCTED: 1996

John Oliver & Associates, Inc.
 Civil Engineering, Land Surveying, Land Planning
 580 Dodge Avenue
 Elk River, Minnesota 55330
 (612)441-2072 (FAX)441-5665

LAFAYETTE WOODS
 LAFAYETTE, MN
 WINDSOR DEVELOPMENT L.L.P.
 SANITARY SEWER, WATERMAIN,
 STORM SEWER AND STREET PLAN
 194TH LANE NW

201 W. Travelers Trail, Suite 200
 Burnsville, MN 55337
 (612)894-3045 (FAX)894-3049

SHEET NO. 4 OF 15