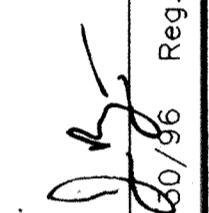


DATE: 04/30/96  
DESIGN BY: JB  
DRAWN BY: BG  
CHECKED BY: JB  
DWG FILE: LW-INDEX  
TEXT FILE: NONE  
FILE NO.: 7024.10-03

REV. NO.	DATE	DESCRIPTION
1	05/14/96	EXPANDED PHASE I REVISION
2	06/05/96	MINOR REVISIONS, STREET NAMES
3	06/25/96	GENERAL REVISIONS, CITY COMMENTS
4	11/4/97	RECORD PLANS

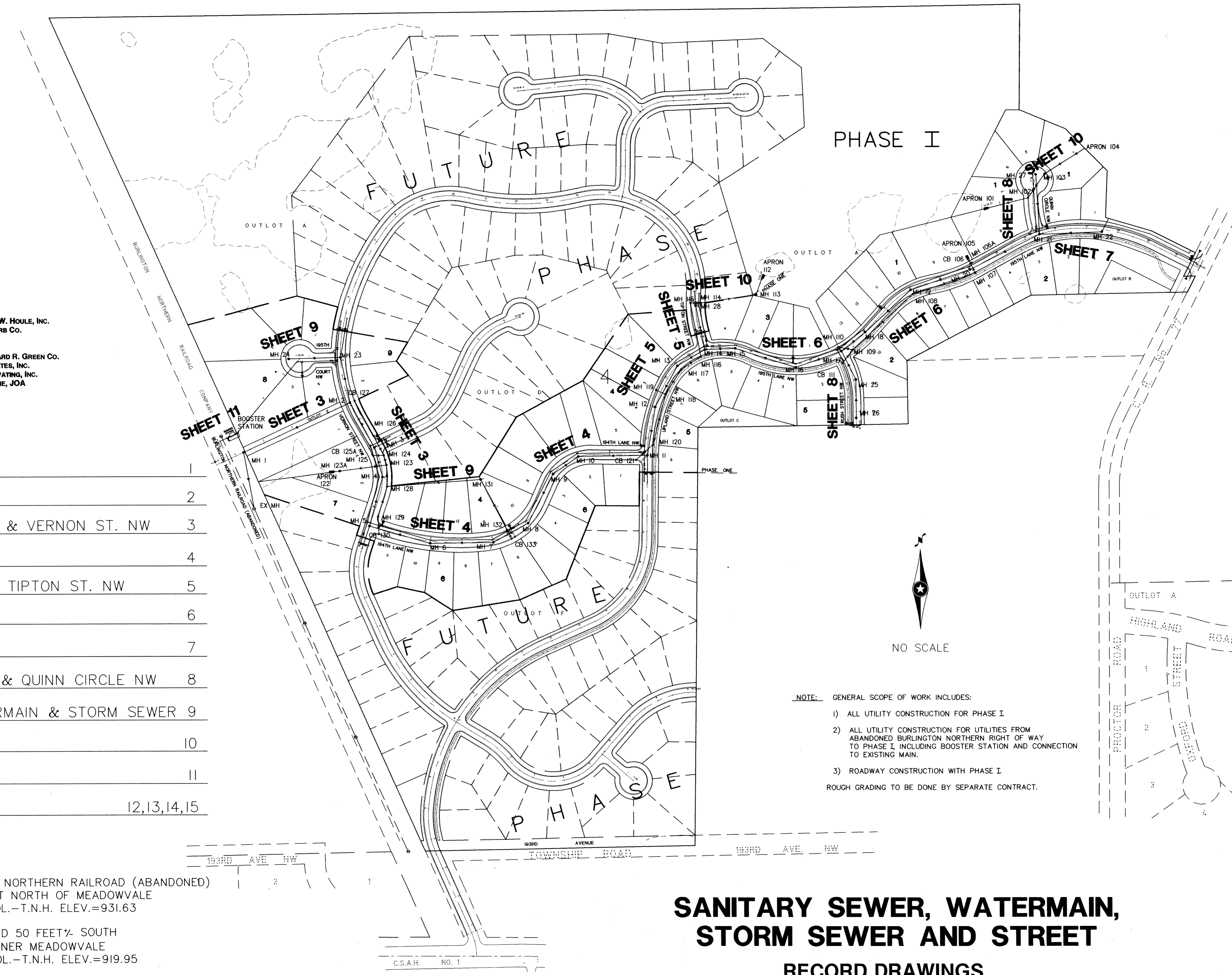
I hereby certify that this plan was prepared by me or under my direct supervision and that I am a duly Registered Professional Engineer under the laws of the State of Minnesota.

Signed:   
Date: 04/30/96 Reg. No. 19900

**John Oliver & Associates, Inc.**  
Civil Engineering, Land Surveying, Land Planning  
580 Dodge Avenue  
Elk River, Minnesota  
(612)441-5072 (FAX)441-5665  
201 W. Travelers Trail, Suite 200  
Burnsville, MN 55337  
(612)894-3045 (FAX)894-3049

**LAFAYETTE WOODS**  
ELK RIVER, MN  
**WINDSOR DEVELOPMENT L.L.P.**  
SANITARY SEWER, WATERMAIN  
STORM SEWER AND STREET  
SHEET INDEX

SHEET NO. 2 OF 15



- NOTE: GENERAL SCOPE OF WORK INCLUDES:
- 1) ALL UTILITY CONSTRUCTION FOR PHASE I
  - 2) ALL UTILITY CONSTRUCTION FOR UTILITIES FROM ABANDONED BURLINGTON NORTHERN RIGHT OF WAY TO PHASE I, INCLUDING BOOSTER STATION AND CONNECTION TO EXISTING MAIN.
  - 3) ROADWAY CONSTRUCTION WITH PHASE I
- ROUGH GRADING TO BE DONE BY SEPARATE CONTRACT.

# SANITARY SEWER, WATERMAIN, STORM SEWER AND STREET

## RECORD DRAWINGS

PRIME CONTRACTOR/UTILITIES: C.W. HOULE, INC.  
CURB & GUTTER: HALVORSON CURB CO.  
STREETS: BAUERLY BROS., INC.

INSPECTION: RALPH BADER, HOWARD R. GREEN CO.  
SURVEY: JOHN OLIVER & ASSOCIATES, INC.  
EARTHWORK: DENNIS FEHN EXCAVATING, INC.  
RECORD DRAWINGS: BRYAN CLICHE, JOA  
CONSTRUCTED: 1996

TITLE SHEET	1
SHEET INDEX	2
UTILITY EASEMENT & VERNON ST. NW	3
194TH LANE NW	4
UPLAND ST. NW & TIPTON ST. NW	5
195TH LANE NW 1	6
195TH LANE NW 2	7
RUSH STREET NW & QUINN CIRCLE NW	8
195TH CRT, WATERMAIN & STORM SEWER	9
STORM SEWER	10
BOOSTER STATION	11
DETAILS	12,13,14,15

BENCHMARKS

#1 ALONG BURLINGTON NORTHERN RAILROAD (ABANDONED)  
FIRST FIRE HYDRANT NORTH OF MEADOWVALE  
ELEMENTARY SCHOOL.-T.N.H. ELEV.=931.63

#2 25 FEET± EAST AND 50 FEET± SOUTH  
OF SOUTHEAST CORNER MEADOWVALE  
ELEMENTARY SCHOOL.-T.N.H. ELEV.=919.95