

UPLAND ST NW

RECORD DRAWINGS

SAW-CUT EXISTING BITUMINOUS A MINIMUM OF 2" BEHIND END OF CURB. MILL PAVEMENT 1 1/2" X 18" WIDE

REMOVE EXISTING WATERMAIN PLUG & SALVAGE FOR REUSE

REMOVE EXISTING SANITARY PLUG & SALVAGE FOR REUSE

NOTE:
 - SANITARY SEWER SERVICE ELEVATIONS ARE INVERT AT THE 45 DEGREE BEND
 - SANITARY SEWER SERVICE WYES STATIONED FROM DOWNSTREAM MANHOLE, BEING 0+00
 - SERVICE TIES ARE TO WATER CURB STOP
 - SANITARY SEWER SERVICES ARE 4" PVC AND HAVE A 5' +/- RISER ON END
 - WATER SERVICES ARE 1" COPPER

REMOVE EXISTING WATERMAIN PLUG & SALVAGE FOR REUSE

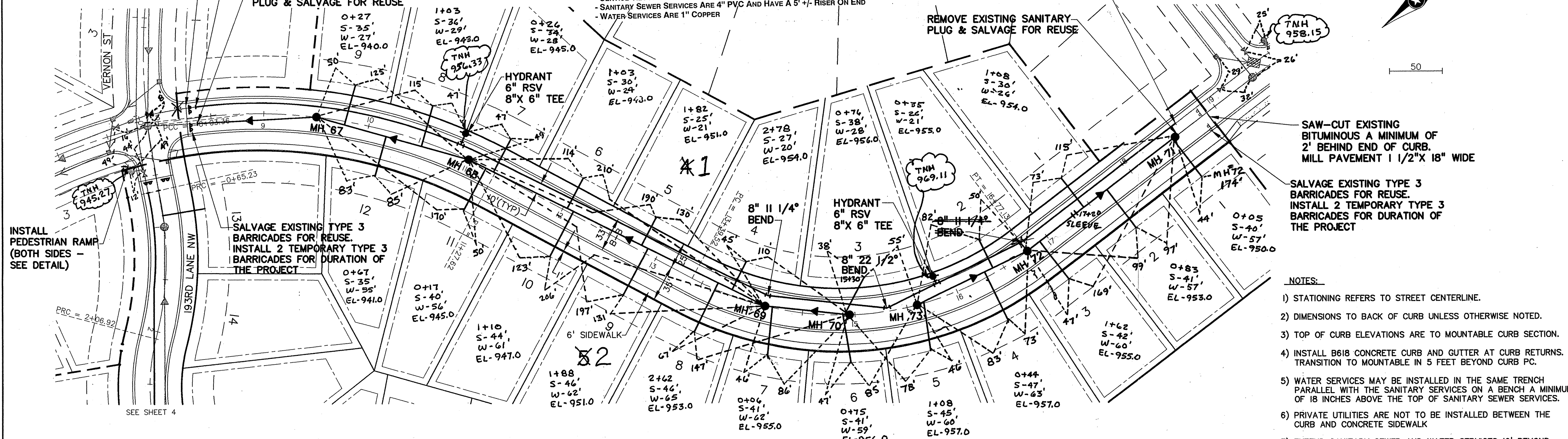
REMOVE EXISTING SANITARY PLUG & SALVAGE FOR REUSE

SAW-CUT EXISTING BITUMINOUS A MINIMUM OF 2" BEHIND END OF CURB. MILL PAVEMENT 1 1/2" X 18" WIDE

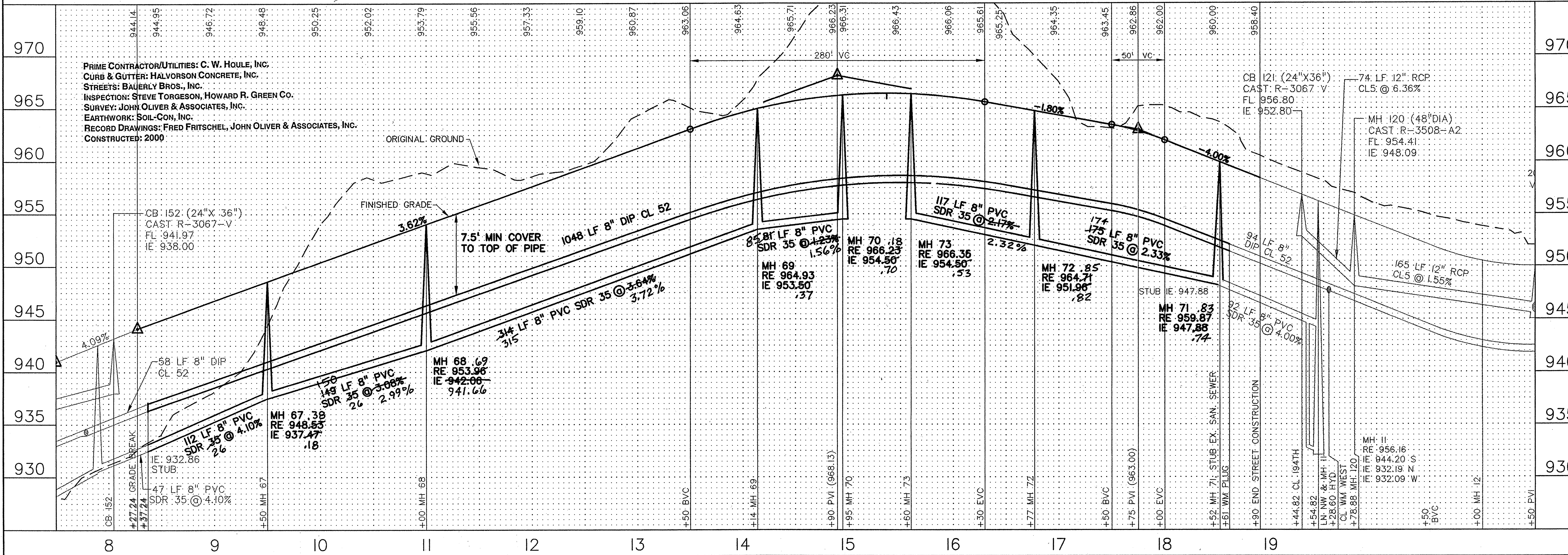
SALVAGE EXISTING TYPE 3 BARRICADES FOR REUSE. INSTALL 2 TEMPORARY TYPE 3 BARRICADES FOR DURATION OF THE PROJECT

NOTES:

- 1) STATIONING REFERS TO STREET CENTERLINE.
- 2) DIMENSIONS TO BACK OF CURB UNLESS OTHERWISE NOTED.
- 3) TOP OF CURB ELEVATIONS ARE TO MOUNTABLE CURB SECTION.
- 4) INSTALL B618 CONCRETE CURB AND GUTTER AT CURB RETURNS. TRANSITION TO MOUNTABLE IN 5 FEET BEYOND CURB PC.
- 5) WATER SERVICES MAY BE INSTALLED IN THE SAME TRENCH PARALLEL WITH THE SANITARY SERVICES ON A BENCH A MINIMUM OF 18 INCHES ABOVE THE TOP OF SANITARY SEWER SERVICES.
- 6) PRIVATE UTILITIES ARE NOT TO BE INSTALLED BETWEEN THE CURB AND CONCRETE SIDEWALK
- 7) EXTEND SANITARY SEWER AND WATER SERVICES 10' BEYOND PROPERTY LINE



NOTE: CENTERLINE STREET ELEVATIONS WERE NOT SHOT AFTER CONSTRUCTION.



PRIME CONTRACTOR/UTILITIES: C. W. HOULE, INC.
 CURB & GUTTER: HALVORSON CONCRETE, INC.
 STREETS: BAUERLY BROS., INC.
 INSPECTION: STEVE TORGESON, HOWARD R. GREEN CO.
 SURVEY: JOHN OLIVER & ASSOCIATES, INC.
 EARTHWORK: SOIL-CON, INC.
 RECORD DRAWINGS: FRED FRITSCHEL, JOHN OLIVER & ASSOCIATES, INC.
 CONSTRUCTED: 2000

REV. NO.	DATE	DESCRIPTION
1	6/29/99	LOWERED STREET GRADES, UTILITIES
2	9/2/99	CITY COMMENTS
3	3/22/01	RECORD DRAWINGS

DATE: 5/12/99
 DESIGN BY: JB
 DRAWN BY: BG
 CHECKED BY: JB
 DWG FILE: 3-UPLAN
 TEXT FILE: NONE
 FILE NO.: 7024-40-03

I hereby certify that this plan was prepared by me or under my direct supervision and that I am a duly Registered Professional Engineer under the laws of the State of Minnesota.
 Signed: *John C. Shurt*
 Date: 5/12/99 Reg. No. 14960

John Oliver & Associates, Inc.
 Civil Engineering, Land Surveying, Land Planning
 580 Dodge Avenue
 Elk River, Minnesota 55330
 (612)441-2072 (FAX)441-5665

LAFAYETTE WOODS FOURTH ADDITION
 ELK RIVER, MN
WINDSOR DEVELOPMENT L.L.P.
 SANITARY SEWER, WATERMAIN,
 STORM SEWER AND STREET PLAN
 UPLAND ST NW

SHEET NO. 3 OF 7