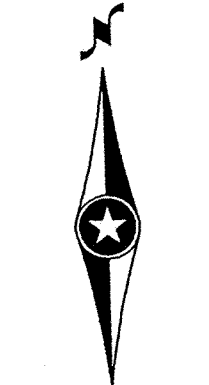


RECORD DRAWINGS



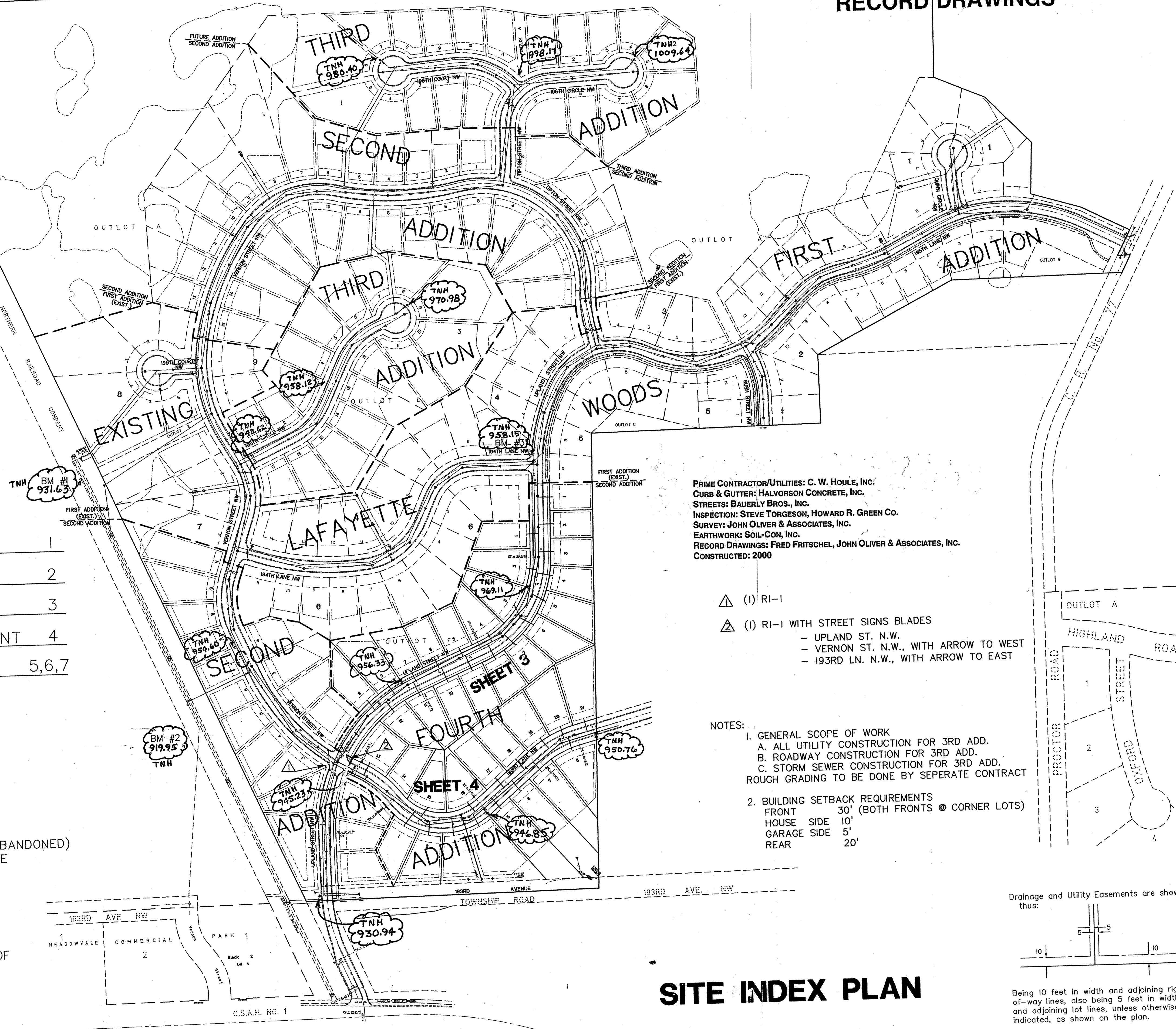
SCALE
1"=150'

SHEET INDEX

TITLE SHEET	1
SITE INDEX PLAN	2
UPLAND ST NW	3
193RD LN NW/STORM SEWER EASEMENT	4
DETAILS	5,6,7

BENCHMARKS

- #1 ALONG BURLINGTON NORTHERN RAILROAD (ABANDONED) FIRST FIRE HYDRANT NORTH OF MEADOWVALE ELEMENTARY SCHOOL.—T.N.H. ELEV.=931.63
- #2 25 FEET± EAST AND 50 FEET± SOUTH OF SOUTHEAST CORNER MEADOWVALE ELEMENTARY SCHOOL.—T.N.H. ELEV.=919.95
- #3 FIRE HYDRANT AT NORTHWEST QUADRANT OF UPLAND STREET NW AND 194TH LANE NW.—T.N.H. ELEV.=958.15

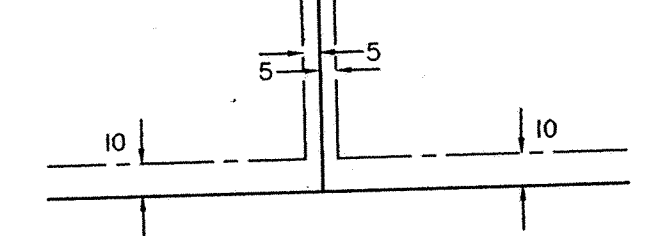


PRIME CONTRACTOR/UTILITIES: C. W. HOULE, INC.
 CURB & GUTTER: HALVORSON CONCRETE, INC.
 STREETS: BAUERLY BROS., INC.
 INSPECTION: STEVE TORGESON, HOWARD R. GREEN CO.
 SURVEY: JOHN OLIVER & ASSOCIATES, INC.
 EARTHWORK: SOIL-CON, INC.
 RECORD DRAWINGS: FRED FRITSCHER, JOHN OLIVER & ASSOCIATES, INC.
 CONSTRUCTED: 2000

- △ (I) RI-1
- △ (I) RI-1 WITH STREET SIGNS BLADES
 - UPLAND ST. N.W.
 - VERNON ST. N.W., WITH ARROW TO WEST
 - 193RD LN. N.W., WITH ARROW TO EAST

- NOTES:
1. GENERAL SCOPE OF WORK
 - A. ALL UTILITY CONSTRUCTION FOR 3RD ADD.
 - B. ROADWAY CONSTRUCTION FOR 3RD ADD.
 - C. STORM SEWER CONSTRUCTION FOR 3RD ADD.
 2. BUILDING SETBACK REQUIREMENTS
 - FRONT 30' (BOTH FRONTS @ CORNER LOTS)
 - HOUSE SIDE 10'
 - GARAGE SIDE 5'
 - REAR 20'

Drainage and Utility Easements are shown thus:



Being 10 feet in width and adjoining right-of-way lines, also being 5 feet in width and adjoining lot lines, unless otherwise indicated, as shown on the plan.

SITE INDEX PLAN

REV. NO.	DATE	DESCRIPTION
1	9/2/99	STREET SIGNS
2	3/22/01	RECORD DRAWINGS

DATE:	5/2/99
DESIGN BY:	JB
DRAWN BY:	BG
CHECKED BY:	JB
DWG FILE:	2-PPINX
TEXT FILE:	NONE
FILE NO.:	7024.40-03

I hereby certify that this plan was prepared by me or under my direct supervision and that I am a duly Registered Professional Engineer under the laws of the State of Minnesota.

Signed: *John C. Smith* Reg. No. 14960
 Date: 5/2/99

John Oliver & Associates, Inc.
 Civil Engineering, Land Surveying, Land Planning
 680 Dodge Avenue
 Elk River, Minnesota
 (612)441-2072 (FAX)441-5665
 201 W. Travelers Trail, Suite 200
 Burnsville, MN 55337
 (612)894-3045 (FAX)894-3049

LAFAYETTE WOODS
 FOURTH ADDITION
 ELK RIVER, MN
 FOR
 WINDSOR DEVELOPMENT L.L.P.
 SITE INDEX PLAN

SHEET NO. 2 OF 7