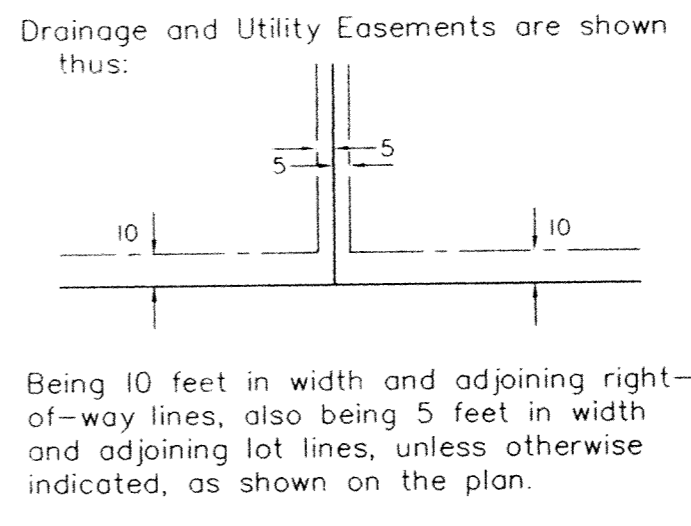
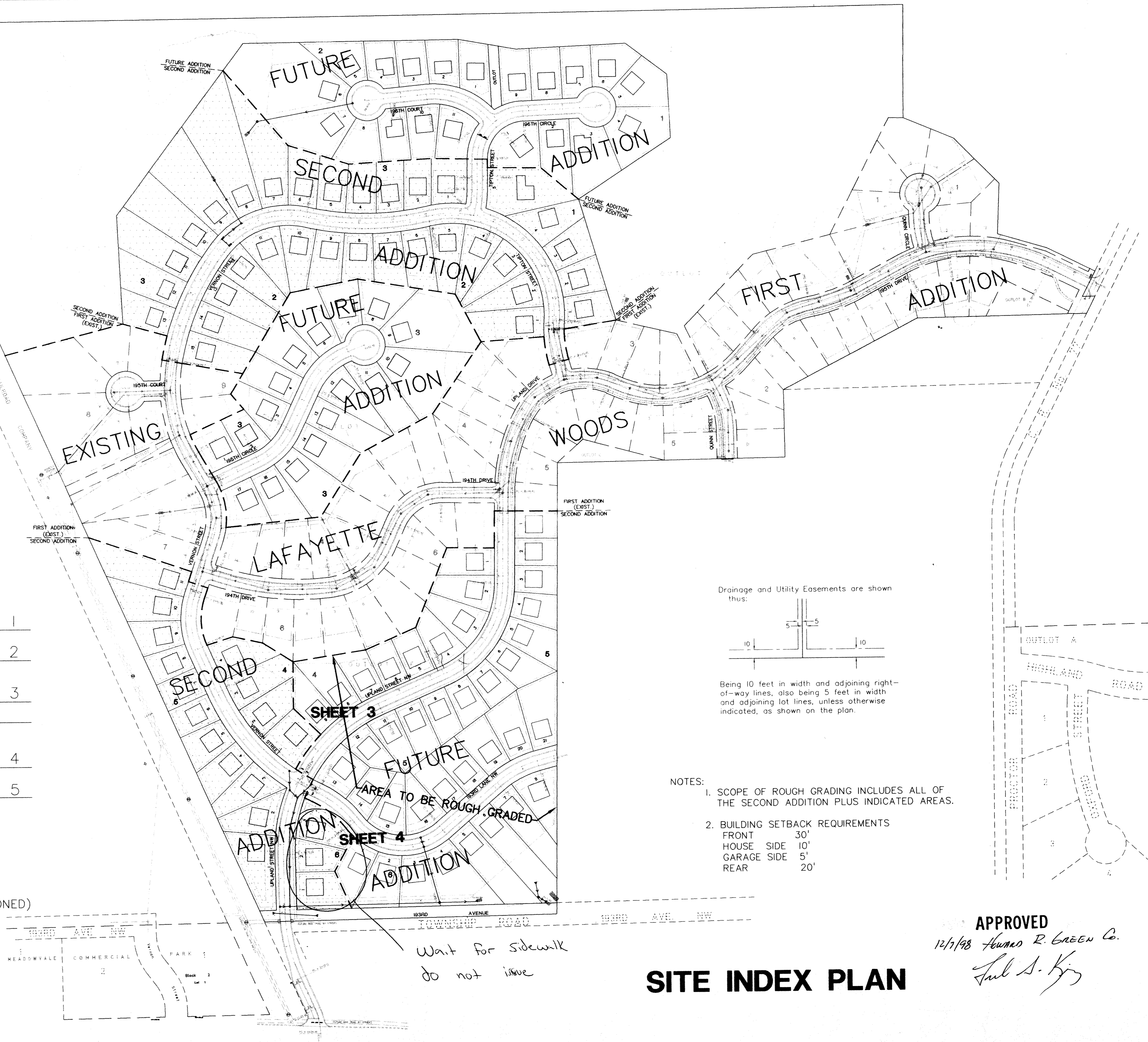


SHEET INDEX

TITLE SHEET	1
SITE INDEX PLAN	2
VERNON ST. N.W. (SOUTHERN PORTION) & UPLAND STREET NW	3
UPLAND STREET NW & 193RD LANE NW	4
DETAILS	5

BENCHMARKS

- #1 ALONG BURLINGTON NORTHERN RAILROAD (ABANDONED) FIRST FIRE HYDRANT NORTH OF MEADOWVALE ELEMENTARY SCHOOL.-T.N.H. ELEV.=931.63
- #2 25 FEET<sup>±</sup> EAST AND 50 FEET<sup>±</sup> SOUTH OF SOUTHEAST CORNER MEADOWVALE ELEMENTARY SCHOOL.-T.N.H. ELEV.=919.95
- #3 FIRE HYDRANT AT NORTHWEST QUADRANT OF UPLAND STREET NW AND 194TH LANE NW. -T.N.H. ELEV.=958.15



- NOTES:
- SCOPE OF ROUGH GRADING INCLUDES ALL OF THE SECOND ADDITION PLUS INDICATED AREAS.
  - BUILDING SETBACK REQUIREMENTS  
 FRONT 30'  
 HOUSE SIDE 10'  
 GARAGE SIDE 5'  
 REAR 20'

Wait for sidewalk  
do not issue

**SITE INDEX PLAN**

APPROVED  
12/1/98 *Howard R. Green C.*  
*Paul S. King*

I hereby certify that this plan was prepared by me or under my direct supervision and that I am a duly Licensed Professional Engineer under the laws of the State of Minnesota.  Signed: <i>[Signature]</i> Date: 9/24/97 Reg. No. 14960	DATE: 9/24/97	REV. NO.:	DESCRIPTION:
	DESIGN BY: JK, GD	1	10/14/97 GEN. REVISION
	DRAWN BY: BG	2	10/23/97 STORM SEWER
CHECKED BY: GD, JB	3	11/12/97 STORM SEWER	
DWG FILE: PH2-GDX			
TEXT FILE: NONE			
FILE NO.: 7024.20-03			

**John Oliver & Associates, Inc.**  
Civil Engineering, Land Surveying, Land Planning  
580 Dodge Avenue  
216 River, Minnesota  
(612)441-2072 (FAX)441-5865  
201 W. Truellers Trail, Suite 200  
Burnsville, MN 55337  
(612)894-3045 (FAX)894-3049

**LAFAYETTE WOODS SECOND ADDITION**  
ELK RIVER, MN  
FOR  
**WINDSOR DEVELOPMENT L.L.P.**  
SITE GRADING, DRAINAGE & EROSION CONTROL PLAN  
SITE INDEX PLAN

SHEET NO. 2 OF 5