

# VERNON STREET

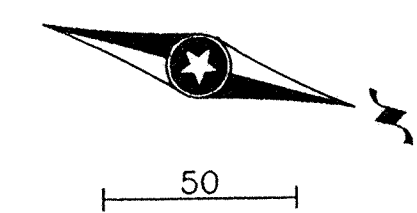
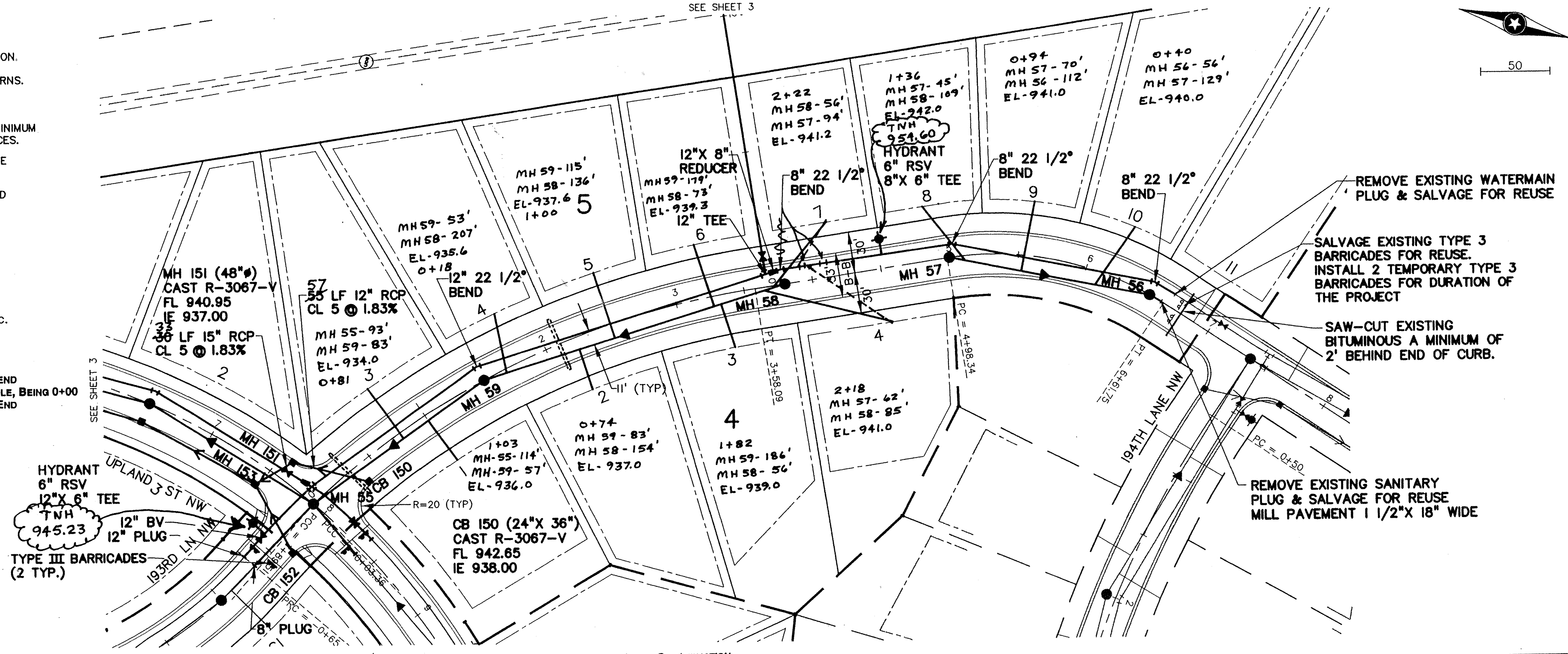
# RECORD DRAWINGS

**NOTES:**

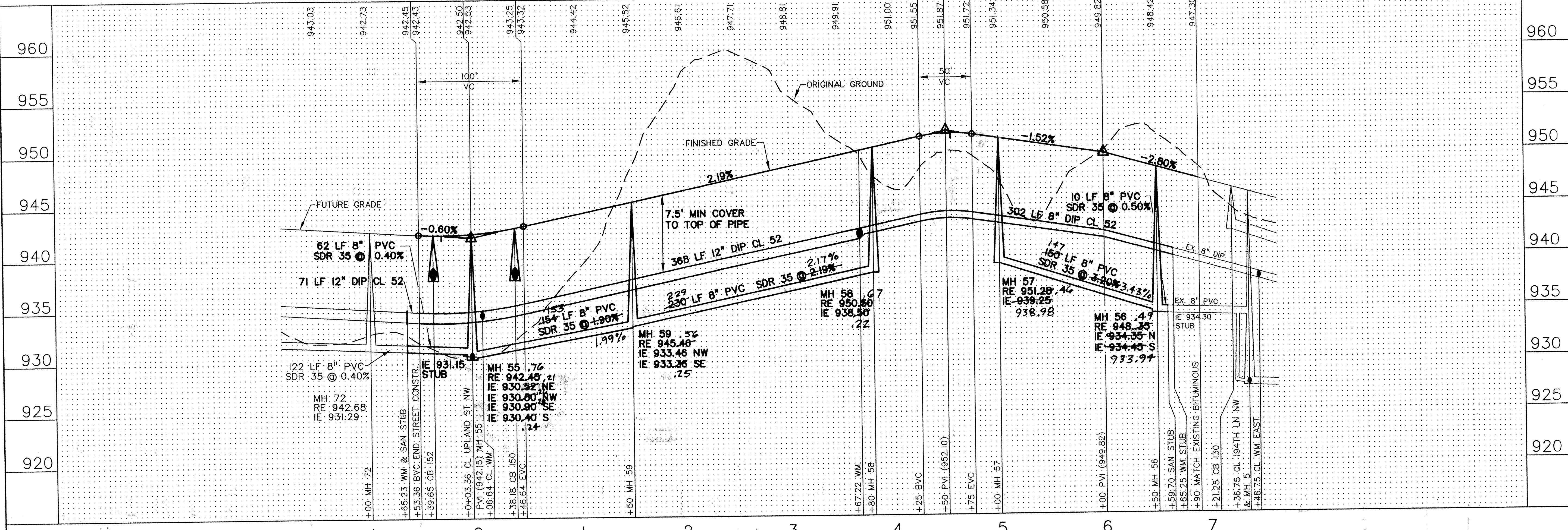
- 1) STATIONING REFERS TO STREET CENTERLINE.
- 2) DIMENSIONS TO BACK OF CURB UNLESS OTHERWISE NOTED.
- 3) TOP OF CURB ELEVATIONS ARE TO MOUNTABLE CURB SECTION.
- 4) INSTALL B618 CONCRETE CURB AND GUTTER AT CURB RETURNS. TRANSITION TO MOUNTABLE IN 5 FEET BEYOND CURB PC.
- 5) WATER SERVICES MAY BE INSTALLED IN THE SAME TRENCH PARALLEL WITH THE SANITARY SERVICES ON A BENCH A MINIMUM OF 18 INCHES ABOVE THE TOP OF SANITARY SEWER SERVICES.
- 6) PRIVATE UTILITIES ARE NOT TO BE INSTALLED BETWEEN THE CURB AND CONCRETE SIDEWALK
- 7) EXTEND SANITARY SEWER AND WATER SERVICES 10' BEYOND PROPERTY LINE

PRIME CONTRACTOR/UTILITIES: C.W. HOULE, INC.  
 CURB & GUTTER: HALVORSON CONCRETE, INC.  
 STREETS: BAUERLY BROS., INC.  
 INSPECTION: HOWARD R. GREEN CO.  
 SURVEY: JOHN OLIVER & ASSOCIATES, INC.  
 EARTHWORK: SOIL-CON, INC.  
 RECORD DRAWINGS: FRED FRITSCHEL, JOHN OLIVER & ASSOCIATES, INC.  
 CONSTRUCTED: 1998

**NOTE:**  
 - SANITARY SEWER SERVICE ELEVATIONS ARE INVERT AT THE 45 DEGREE BEND  
 - SANITARY SEWER SERVICE WYES STATIONED FROM DOWNSTREAM MANHOLE, BEING 0+00  
 - SANITARY SEWER SERVICES ARE 4" PVC AND HAVE A 5' (+/-) RISER ON END  
 - WATER SERVICES ARE 1" COPPER



NOTE: CENTERLINE STREET ELEVATIONS WERE NOT SHOT AFTER CONSTRUCTION.



REV. NO.	DATE	DESCRIPTION
1	10/14/97	STORM SEWER WATERMAIN
2	10/21/97	CITY COMMENTS
3	10/24/97	STORM SEWER
4	11/13/97	PROFILE FLOWLINE ELEV & CURB ELEV.
5	5/10/99	RECORD DRAWING

DATE:	9/26/97
DESIGN BY:	GD
DRAWN BY:	BG
CHECKED BY:	GD:JB
DWG FILE:	4-VERN
TEXT FILE:	NONE
FILE NO.:	7024-20-03

I hereby certify that this plan was prepared by me or under my direct supervision and that I am a duly Registered Professional Engineer under the laws of the State of Minnesota.

Signed: *[Signature]* Reg. No. 14960  
 Date: 9/26/97

<b>John Oliver &amp; Associates, Inc.</b> Civil Engineering, Land Surveying, Land Planning 580 Dodge Avenue Elk River, Minnesota 55330 (612)441-2072 (FAX)441-5665	960 955 950 945 940 935 930 925 920
LAFAYETTE WOODS SECOND ADDITION ELK RIVER, MN WINDSOR DEVELOPMENT L.L.P. SANITARY SEWER, WATERMAIN, STORM SEWER AND STREET PLAN VERNON STREET	960 955 950 945 940 935 930 925 920

SHEET NO.	4	OF	9
-----------	---	----	---